

Instructions for Authors 2021

General Policy. IN VIVO is a multidisciplinary journal designed to bring together original high quality works and reviews on experimental and clinical biomedical research within the frames of human physiology, pathology and disease management. The topics of IN VIVO include: 1. Experimental development and application of new diagnostic and therapeutic procedures; 2. Pharmacological and toxicological evaluation of new drugs, drug combinations and drug delivery systems; 3. Clinical trials; 4. Development and characterization of models of biomedical research; 5. Cancer diagnosis and treatment; 6. Immunotherapy and vaccines; 7. Radiotherapy, Imaging; 8. Tissue engineering, Regenerative medicine; 9. Carcinogenesis; 10. Retrospective studies and case reports. Each article should include a concrete conclusion constituting a “new piece of knowledge” backed up by scientific evidence. IN VIVO provides for the prompt online publication of accepted articles, generally within 1-2 months from final acceptance.

Manuscripts will be accepted on the understanding that they report original unpublished works that are not under consideration for publication by another journal, and that they will not be published again in the same form. All authors should sign a submission letter confirming the approval of their article contents. All material submitted to IN VIVO will be subject to peer-review, when appropriate, by two members of the Editorial Board. All manuscripts submitted to IN VIVO are urgently treated with absolute confidence, with access restricted to the Managing Editor, the journal’s secretary, the reviewers and the printers. The Editors reserve the right to improve manuscripts on grammar and style.

The use of animals in biomedical research should take place under careful supervision of a person adequately trained in this field and the animals must be treated humanely at all times. Such research should adhere to the Guiding Principles in the Care and Use of Animals approved by the Council of the American Physiological Society.

The Editors and Publishers of IN VIVO accept no responsibility for the contents and opinions expressed by the contributors. Authors should warrant due diligence in the creation and issuance of their work.

Open Access Policy. IN VIVO appears bimonthly as an online-only open access journal through the Stanford University HighWire Press. Upon acceptance, Authors will be asked to pay an online publication fee of USD 800.00 (effective January 1, 2021) for articles up to 8 online pages (including figures and tables). Each additional excess page will be charged USD 60.00. Color will not be charged. Authors from developing countries may apply for a 25% discount after the acceptance of their paper. IN VIVO online will keep the volume and issue numbers, as well as page numbering.

Copyright. Authors retain copyright. The unrestricted non-commercial use, distribution and reproduction in any medium of IN VIVO articles for academic reasons is allowed, provided that the original work is properly cited. The Authors grant the permanent right to the publisher to use any articles published in this journal without any restriction, including academic advertising purposes. PDF, XML and html files of all articles published in IN VIVO are the property of the publisher.

Format. Two types of papers may be submitted: (i) Full papers containing completed original work (without supplementary data), and (ii) review articles concerning fields of recognisable progress. Papers should contain all essential data in order to make the presentation clear. Papers should be written in clear, concise English. Spelling should follow that given in the “Shorter Oxford English Dictionary”.

Manuscripts. Manuscripts should be divided into the following sections: (a) *First page* including the title of the presented work [not exceeding fifteen (15) words], full names and full postal addresses of all Authors, name of the Author to whom proofs are to be sent, key words, an abbreviated running title, an indication “review”, “clinical”, “epidemiological”, or “experimental” study, and the date of submission. (Note: The order of the Authors is not necessarily indicative of their contribution to the work. Authors may note their individual contribution(s) in the appropriate section(s) of the presented work or before the Acknowledgements); (b) *Abstract* not exceeding 150 words, organized according to the following headings: Background/Aim – Materials and Methods/Patients and Methods – Results – Conclusion; (c) *Introduction*; (d) *Materials and Methods/Patients and Methods*; (e) *Results*; (f) *Discussion*; (g) *Conflicts of Interest*; (h) *Authors’ contributions*; (i) *Acknowledgements*; (j) *References*. All pages must be numbered consecutively. Footnotes should be avoided. Review articles may follow a different style according to the subject matter and the Author’s opinion.

Figures (graphs and photographs). All figures should appear **at the end** of the submitted document file. Once a manuscript is accepted all figures should be submitted separately in either jpg, tiff or pdf format and at a minimum resolution of 300 dpi. Graphs must be submitted as pictures made from drawings and must not require any artwork, typesetting, or size modifications. The number of each figure must be indicated. Pages that include color figures are not subject to color charges.

Tables. All tables should appear **at the end** of the submitted document file. Each table may have 2-10 vertical columns. Once a manuscript is accepted, each table should be submitted separately, typed double-spaced. Tables should be numbered with Roman numerals and should include a short title.

References. Authors must assume responsibility for the accuracy of the references used. Citations for the reference sections of submitted works should follow the form below and must be numbered consecutively. In the text, references should be cited by number in parenthesis. Examples: 1 Kenyon J, Liu W and Dagleish A: Report of objective clinical responses of cancer patients to pharmaceutical-grade synthetic cannabidiol. *Anticancer Res* 38(10): 5831-5835, 2018. PMID: 30275207. DOI: 10.21873/anticancer.12924. (PMIDs and DOIs only if applicable). 2 McGuire WL and Chamnes GC: Studies on the oestrogen receptor in breast cancer. In: *Receptors for Reproductive Hormones*. O' Malley BW, Chamnes GC (eds.). New York, Plenum Publ Corp., pp 113-136, 1973. 3 Global Health Estimates 2015: Disease Burden by Cause, Age, Sex, by Country and by Region, 2000-2015. Geneva, World Health Organisation, 2016. Available at http://www.who.int/healthinfo/global_burden_disease/estimates/en/index2.html. Last accessed on 3rd April 2018. (The web address should link directly to the cited information and not to a generic webpage).

Nomenclature and Abbreviations. Nomenclature should follow that given in "Chemical Abstracts", "Index Medicus", "Merck Index", "IUPAC -IUB", "Bergey's Manual of Determinative Bacteriology", The CBE Manual for Authors, Editors and Publishers (6th edition, 1994), and MIAME Standard for Microarray Data. Human gene symbols may be obtained from the HUGO Gene Nomenclature Committee (HGNC) (<http://www.gene.ucl.ac.uk/>). Approved mouse nomenclature may be obtained from <http://www.informatics.jax.org/>. Standard abbreviations are preferable. If a new abbreviation is used, it must be defined on first usage.

Clinical Trials. Authors of manuscripts describing clinical trials should provide the appropriate clinical trial number in the correct format in the text.

For International Standard Randomised Controlled Trials (ISRCTN) Registry (a not-for-profit organization whose registry is administered by Current Controlled Trials Ltd.) the unique number must be provided in this format: ISRCTNXXXXXXXX (where XXXXXXXX represents the unique number, always prefixed by "ISRCTN"). Please note that there is no space between the prefix "ISRCTN" and the number. Example: ISRCTN47956475.

For Clinicaltrials.gov registered trials, the unique number must be provided in this format: NCTXXXXXXXX (where XXXXXXXX represents the unique number, always prefixed by "NCT"). Please note that there is no space between the prefix "NCT" and the number. Example: NCT00001789.

Ethical Policies and Standards. IN VIVO agrees with and follows the "Uniform Requirements for Manuscripts Submitted to Biomedical Journals" established by the International Committee of Medical Journal Editors in 1978 and updated in October 2001 (www.icmje.org). Microarray data analysis should comply with the "Minimum Information About Microarray Experiments (MIAME) standard". Specific guidelines are provided at the "Microarray Gene Expression Data Society" (MGED) website. Presentation of genome sequences should follow the guidelines of the NHGRI Policy on Release of Human Genomic Sequence Data. Research involving human beings must adhere to the principles of the Declaration of Helsinki and Title 45, U.S. Code of Federal Regulations, Part 46, Protection of Human Subjects, effective December 13, 2001. Research involving animals must adhere to the Guiding Principles in the Care and Use of Animals approved by the Council of the American Physiological Society. The use of animals in biomedical research should be under the careful supervision of a person adequately trained in this field and the animals must be treated humanely at all times. Research involving the use of human foetuses, foetal tissue, embryos and embryonic cells should adhere to the U.S. Public Law 103-41, effective December 13, 2001.

Submission of Manuscripts. Please follow the Instructions for Authors regarding the format of your manuscript and references. Manuscripts must be submitted only through our online submission system at: <http://www.iar-submissions.com/login.html>. In case a submission is incomplete, the corresponding Author will be notified accordingly. Questions regarding difficulties in using the online submission system should be addressed to: email: journals@iar-anticancer.org

Galley Proofs. Unless otherwise indicated, galley proofs will be sent to the corresponding Author of the submission. Corrections of galley proofs should be limited to typographical errors. Galley proofs should be returned corrected to the Editorial Office by email within two days.

Specific information and additional instructions for Authors

1. In Vivo (IV) will consider the publication of conference proceedings and/or abstracts provided that the material submitted fulfils the quality requirements and instructions of the journal, following the regular review process by two suitable referees.
2. An acknowledgement of receipt, including the article number, title and date of receipt is sent to the corresponding author of each manuscript upon receipt. If this receipt is not received within 5 days from submission, the author should contact the Editorial Office to ensure that the manuscript (or the receipt) was not lost in the mail.

3. Each manuscript submitted to IV is sent for peer-review in confidence to two suitable referees with the request to return the manuscript with their comments to the Editorial Office within 12 days from receipt. If reviewers need a longer time or wish to send the manuscript to another expert, the manuscript may be returned to the Editorial Office with a delay. All manuscripts submitted to IV, are treated in confidence, without access to any person other than the Managing Editor, the journal's secretary, the reviewers and the printers.
4. All accepted manuscripts are carefully corrected in style and language, if necessary, to make presentation clear. (There is no fee for this service). Every effort is made (a) to maintain the personal style of the author's writing and (b) to avoid change of meaning. Authors will be requested to examine carefully manuscripts which have undergone language correction at the pre-proof or proof stage.
5. Authors should pay attention to the following points when writing an article for IN VIVO:
 - The Instructions to Authors must be followed in every detail.
 - The presentation of the experimental methods should be clear and complete in every detail facilitating reproducibility by other scientists.
 - The presentation of results should be simple and straightforward in style. Results and Discussion should not be combined into one section.
 - Results given in figures should not be repeated in tables.
 - Photographs should be clear with high contrast, presenting the actual observation described in the legend and in the text. Each legend should provide a complete description, being self-explanatory, including technique of preparation, information about the specimen and magnification.
 - Statistical analysis should be elaborated wherever it is necessary. Simplification of presentation by giving only numerical or % values should be avoided.
 - Fidelity of the techniques and reproducibility of the results, should be points of particular importance in the discussion section. Authors are advised to check the correctness of their methods and results carefully before writing an article. Probable or dubious explanations should be avoided.
 - Authors should not cite results submitted for publication in the reference section. Such results may be described briefly in the text with a note in parenthesis (submitted for publication by... authors, year).
 - References. Each article should address, list and discuss the entire spectrum of current publications relevant to its field.
 - By following these instructions, Authors will facilitate a more rapid review and processing of their manuscripts and will provide the readers with concise and useful papers.
6. Following review and acceptance, a manuscript is examined in language and style, and galley proofs are rapidly prepared. Second proofs are not sent unless required.
7. Authors should correct their galley proofs very carefully and preferably twice. An additional correction by a colleague always proves to be useful. Particular attention should be paid to chemical formulas, mathematical equations, symbols, medical nomenclature etc. Any system of correction marks can be used in a clear manner, preferably with a red pen. Additions or clarifications are allowed provided that they improve the presentation but do not bring new results (no fee).
8. Articles submitted to IN VIVO may be rejected without review if:
 - they do not fall within the journal's policy.
 - they do not follow the instructions for authors.
 - language is unclear.
 - results are not sufficient to support a final conclusion.
 - results are not objectively based on valid experiments.
 - they repeat results already published by the same or other authors before the submission to IV.
 - plagiarism is detected by plagiarism screening services.(Rejection rate (2020): 64%).
9. Authors who wish to prepare a review should contact the Managing Editor of the journal in order to get confirmation of interest in the particular topic of the review and to allow programming of space availability. The expression of interest by the Managing Editor does not necessarily imply acceptance of the review by the journal.
10. Authors may inquire information about the status of their manuscript(s) by calling the Editorial Office at +30-22950-53389, Monday to Friday 9.00-16.00 (Athens time), or by sending an e-mail to journals@iiaar-anticancer.org.
11. Authors who wish to organize or edit a special issue on a particular topic should contact the Managing Editor.
(This text is a combination of advice and suggestions contributed by Editors, Authors, Readers and the Managing Editor of IV).

ANTICANCER RESEARCH

International Journal of Cancer Research and Treatment

ISSN: 0250-7005

Contents

Review

Current Treatment of Colorectal Liver Metastasis as a Chronic Disease. N.M. DÖRR, M. BARTELS, M.H. MORGUL. (Leipzig; Münster, Germany)..... 1

Experimental Studies

SAHA and ECGG Promote Apoptosis in Triple-negative Breast Cancer Cells, Possibly Through the Modulation of cIAP2. K.L. STEED, H.R. JORDAN, T.O. TOLLEFSBOL. (Birmingham, AL, USA)..... 9

Genetic Polymorphisms in IL-10 Promoter Are Associated With Smoking and Prostate Cancer Risk in African Americans. M. ABBAS, T. MASON, A. IBAD, M. KHRAJESH, V. APPREY, Y. KANAAN, B. WILSON, G. DUNSTON, L. RICKS-SANTI, H. BRIM. (Washington, DC; Silver Spring, MD; Hampton, VA, USA)..... 27

High Expression of *c-Met*, *PKC ζ* and *ALDH1A3* Predicts a Poor Prognosis in Late-stage Breast Cancer. H. MOTOMURA, Y. NOZAKI, C. ONAGA, A. OZAKI, S. TAMORI, T.-A. SHINA, S. KANAI, C. OHIRA, Y. HARA, Y. HARADA, R. TAKASAWA, T. HANAWA, S.-I. TANUMA, Y. MANO, T. SATO, K. SATO, K. AKIMOTO. (Chiba, Japan)..... 35

Targeting Fibroblast Growth Factor Receptor (FGFR) and Phosphoinositide 3-kinase (PI3K) Signaling Pathways in Mesothelioma Cell Lines. S. HÖLZHAUSER, M. LEIKOSVIRIUTE, T. ANDONOVA, R.G. URSU, T. DALIANIS, M. WICKSTROM, O.N. KOSTOPOULOU. (Stockholm, Sweden; Iasi, Romania)..... 53

Cisplatin Induced the Expression of *SEI1* (*TBP-Br1*) Oncogene in Human Oral Squamous Cancer Cell Lines. J. LI, Z. VANGUNDY, M. POI. (Columbus, OH, USA)..... 67

Contents continued on the back cover

ISSN (online): 1791-7530 / ISSN (print): 0250-7005

General Policy

- **ANTICANCER RESEARCH** is an independent international forum devoted to the rapid publication of original high quality articles and reviews on all aspects of experimental and clinical oncology. Prompt evaluation of all submitted articles in confidence and rapid publication within 1-2 months from acceptance are guaranteed.
- **ANTICANCER RESEARCH** is published monthly by the International Institute of Anticancer Research and is available online with Stanford University HighWire Press.
- **Editorial Office:** International Institute of Anticancer Research, 1st km Kapandritiou-Kalamou Rd., P.O. Box 22, Kapandriti, Attiki 19014, Greece. Tel: +30 22950 52945, Fax: +30 22950 53389.
- **U.S. Branch:** Anticancer Research Inc., USA, 111 Bay Avenue, Highlands, NJ, USA.
- **E-mail:** journals@iiar-anticancer.org; IAR WEBSITES: www.iiar-anticancer.org and www.iiarjournals.org

● Selection of Recent Articles

The Development of Next-generation PBMC Humanized Mice for Preclinical Investigation of Cancer Immunotherapeutic Agents. Y.M. MORILLON II, A. SABZEVARI, J. SCHLOM, J.W. GREINER (Bethesda, MD, USA)

Human NK-92 Cells Function as Target Cells for Human NK Cells – Implications for CAR NK-92 Therapies. H. BERGMAN, N. SISSALA, H. HÄGERSTRAND, C. LINDQVIST (Turku, Finland)

Activation of Toll-Like Receptor 2 Promotes Proliferation of Human Lung Adenocarcinoma Cells. A.K. GERGEN, P.D. KOHTZ, A.L. HALPERN, A. LI, X. MENG, T.B. REECE, D.A. FULLERTON, M.J. WEYANT (Aurora, CO, USA)

A Gemcitabine Plus 5-Fluorouracil Combination Inhibits Gastric-Cancer Liver Metastasis in a PDOX Model: A Novel Treatment Strategy. N. SUGISAWA, H. NISHINO, T. HIGUCHI, J.H. PARK, J. YAMAMOTO, Y. TASHIRO, K. KAWAGUCHI, M. BOUVET, M. UNNO, R.M. HOFFMAN (San Diego, CA, USA; Sendai, Japan)

Expression of ATP-binding Cassette Transporter 11 (ABCC11) Protein in Colon Cancer. Y. YAMADA, K. YOSHIMATSU, H. YOKOMIZO, S. OKAYAMA, S. SHIOZAWA (Tokyo, Japan)

Genomic Database Analysis for Head and Neck Cancer Prevention Targets: MTOR Signal Transduction Pathway. C. KOENIGSBERG, F.G. ONDREY (Minneapolis, MN, USA)

Presence of the Transmembrane Protein Neuropilin in Cytokine-induced Killer Cells. E.V. DÍEZ GARCÍA DE OLALLA, F. GAROFANO, H. WEIHER, M. MUDERS, S. FÖRSTER, I.G.H. SCHMIDT-WOLF (Bonn; Rheinbach, Germany)

Association of Caspase-8 Genotypes With the Risk for Nasopharyngeal Carcinoma in Taiwan. L.-C. SHIH, C.-W. TSAI, W.-S. CHANG, T.-C. SHEN, Y.-C. WANG, J.-S. YANG, M.-L. LIN, Z.-H. WANG, D.-T. BAU (Taichung, Taiwan, ROC)

Mogamulizumab Plus EPOCH Therapy for Patients With Newly Diagnosed Aggressive Adult T-cell Leukemia/lymphoma. T. JO, K. MATSUZAKA, H. SHIOYA, H. TOMINAGA, T. SAKAI, Y. KANEKO, S. HAYASHI, M. MATSUO, J. TAGUCHI, K. ABE, K. SHIGEMATSU, R. KUBOTA-KOKETSU (Nagasaki; Osaka, Japan)

WNT Signaling Driven by R-spondin 1 and LGR6 in High-grade Serous Ovarian Cancer. S. LEE, J. JUN, W.J. KIM, P. TAMAYO, S.B. HOWELL (Seoul, Republic of Korea; San Diego, CA, USA)

Characterization of a Novel Barbituric Acid and Two Thiobarbituric Acid Compounds for Lung Cancer Treatment. S.Y. LEE, B. SLAGLE-WEBB, A.K. SHARMA, J.R. CONNOR (Hershey, PA, USA)

An Autocrine Role for CXCL1 in Progression of Hepatocellular Carcinoma. K.J.V. DAHLQUIST, L.C. VOTH, A.J. FEE, A.K. STOECKMAN (Saint Paul, MN, USA)

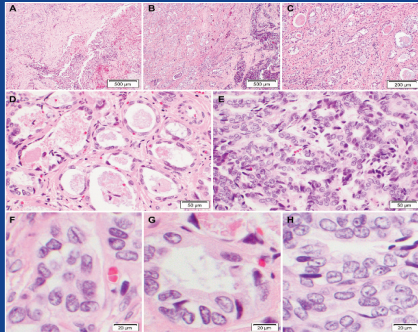
Apoptosis-related Proteins Are Altered by Selective Tyrosine Kinase Inhibitors and Everolimus in HPV-dependent SCC. R. BIRK, A. SCHELL, C. ADERHOLD, S. HOCH, L. HUBER, C.E. MUELLER, A. LAMMERT, C. SCHERL, N. ROTTER, J.U. SOMMER, B. KRAMER (Marburg; Mannheim; Wuppertal, Germany)

Targeting Membrane HDM-2 by PNC-27 Induces Necrosis in Leukemia Cells But Not in Normal Hematopoietic Cells. A. THADI, L. LEWIS, E. GOLDSTEIN, A. AGGARWAL, M. KHALILI, L. STEELE, B. POLYAK, S. SEYDAFKAN, M.H. BLUTH, K.A. WARD, M. STYLER, P.M. CAMPBELL, M.R. PINCUS, W.B. BOWNE (Philadelphia, PA; Brooklyn, NY; Detroit, MI, USA)

Phase I Study of LFA102 in Patients With Advanced Breast Cancer or Castration-resistant Prostate Cancer. H. MINAMI, Y. ANDO, K. TAMURA, T. TAJIMA, R. ISAACS (Kobe; Nagoya; Tokyo, Japan; East Hanover, NJ, USA)

CANCER GENOMICS & PROTEOMICS

ISSN (online): 1790-6245



Published by the International Institute of Anticancer Research

Online ISSN: 1790-6245

General Policy

- **CANCER GENOMICS & PROTEOMICS (CGP)** welcomes submissions of original high quality articles and reviews on all aspects of the application of genomic and proteomic technologies to experimental and clinical cancer research. The journal's scientific spectrum includes: (a) molecular causes of carcinogenesis, cancer progression and metastasis; (b) structural and functional aspects of genes in the cancer cell; (c) advances in genomic and proteomic technologies applicable to cancer research; (d) anticancer drug design and drug development. A main aim of CGP is to ensure the prompt and confidential review, and rapid publication of original works and reviews, generally within 1-3 months from submission.
- CGP is published bimonthly by the **International Institute of Anticancer Research (IIAR)** and is available online only and open access with **Stanford University HighWire Press**. For more information please visit our website www.cgp.iiarjournals.org.
- **Editorial Office:** International Institute of Anticancer Research, 1st km Kapandritiou-Kalamou Rd., P.O. Box 22, Kapandriti, Attiki 19014, Greece. Tel: +30 22950 52945, Fax: +30 22950 53389.
- **U.S. Branch:** Anticancer Research Inc., USA, 111 Bay Avenue, Highlands, NJ, USA.
- **E-mail:** journals@iiar-anticancer.org; IIAR WEBSITES: www.iiar-anticancer.org and www.iiarjournals.org

● Selection of Recent Articles

Micro RNAs Promoting Growth and Metastasis in Preclinical *In Vivo* Models of Subcutaneous Melanoma. U.H. WEIDLE, S. AUSLÄNDER, U. BRINKMANN (*Penzberg, Germany*)

Differential Proteomic Analysis of Hepatocellular Carcinomas from *Ppp2r5d* Knockout Mice and Normal (Knockout) Livers. C. LAMBRECHT, G.B. FERREIRA, J.D. OMELLA, L. LIBBRECHT, R. DE VOS, R. DERUA, C. MATHIEU, L. OVERBERGH, E. WAELEKENS, V. JANSSENS (*Leuven; Brussels, Belgium*)

Stem-like Cells from Invasive Breast Carcinoma Cell Line MDA-MB-231 Express a Distinct Set of Eph Receptors and Ephrin Ligands. M. LUCERO, J. THIND, J. SANDOVAL, S. SENAATI, B. JIMENEZ, R.P. KANDPAL (*Pomona, CA, USA*)

Circulating Tumor DNA in Biliary Tract Cancer: Current Evidence and Future Perspectives. A. RIZZO, A.D. RICCI, S. TAVOLARI, G. BRANDI (*Bologna, Italy*)

Whole-transcriptome Analysis of Fully Viable Energy Efficient Glycolytic-null Cancer Cells Established by Double Genetic Knockout of Lactate Dehydrogenase A/B or Glucose-6-Phosphate Isomerase. E. MAZZIO, R. BADISA, N. MACK, S. CASSIM, M. ZDRALEVIC, J. POUYSSEUR, K.F.A. SOLIMAN (*Tallahassee, FL, USA; Monaco, Monaco; Nice, France*)

TIP60/P400/H4K12ac Plays a Role as a Heterochromatin Back-up Skeleton in Breast Cancer. M. IDRISOU, T. BOISNIER, A. SANCHEZ, F.Z.H. KHOUFAT, F. PENAULT-LORCA, Y.-J. BIGNON, D. BERNARD-GALLON (*Clermont-Ferrand, France*)

STRA6 Expression Serves as a Prognostic Biomarker of Gastric Cancer. S. NAKAMURA, M. KANDA, D. SHIMIZU, K. SAWAKI, C. TANAKA, N. HATTORI, M. HAYASHI, S. YAMADA, G. NAKAYAMA, K. OMAE, M. KOIKE, Y. KODERA (*Nagoya; Fukushima, Japan*)

Expression Patterns of CD44 and AREG Under Treatment With Selective Tyrosine Kinase Inhibitors in HPV+ and HPV- Squamous Cell Carcinoma. B. KANSY, C. ADERHOLD, L. HUBER, S. LUDWIG, R. BIRK, A. LAMMERT, S. LANG, N. ROTTER, B. KRAMER (*Essen; Mannheim; Marburg, Germany*)

Chromobox 2 Expression Predicts Prognosis After Curative Resection of Oesophageal Squamous Cell Carcinoma. S. UEDA, M. KANDA, Y. SATO, H. BABA, S. NAKAMURA, K. SAWAKI, D. SHIMIZU, S. MOTOYAMA, T. FUJII, Y. KODERA, S. NOMOTO (*Nagoya; Akita; Toyama, Japan*)

Fusion of the Lumican (*LUM*) Gene With the Ubiquitin Specific Peptidase 6 (*USP6*) Gene in an Aneurysmal Bone Cyst Carrying a t(12;17)(q21;p13) Chromosome Translocation. I. PANAGOPOULOS, L. GORUNOVA, K. ANDERSEN, I. LOBMAIER, M. LUND-IVERSEN, F. MICCI, S. HEIM (*Oslo, Norway*)

Influence of Concurrent Mutations on Overall Survival in EGFR-mutated Non-small Cell Lung Cancer. M. CHEVALLIER, P. TSANTOULIS, A. ADDEO, A. FRIEDLAENDER (*Geneva, Switzerland*)

Long Noncoding RNA *ANROC* on the *INK4* Locus Functions to Suppress Cell Proliferation. Y. KOTAKE, T. TSURUDA (*Fukuoka, Japan*)

The KDR (VEGFR-2) Genetic Polymorphism Q472H and c-KIT Polymorphism M541L Are Associated With More Aggressive Behaviour in Astrocytic Gliomas. N. ZAMAN, S.S. DASS, P.D. PARCQ, S. MACMAHON, L. GALLAGHER, L. THOMPSON, J.S. KHORASHAD, C. LIMBÄCK-STANIC (*London, UK*)

KIF15 Expression in Tumor-associated Monocytes Is a Prognostic Biomarker in Hepatocellular Carcinoma. A. KITAGAWA, T. MASUDA, J. TAKAHASHI, T. TOBO, M. NODA, Y. KURODA, Q. HU, Y. KOUYAMA, Y. KOBAYASHI, S. KURAMITSU, K. SATO, A. FUJII, Y. YOSHIKAWA, H. WAKIYAMA, D. SHIMIZU, Y. TSURUDA, H. EGUCHI, Y. DOKI, M. MORI, K. MIMORI (*Oita; Osaka; Fukuoka, Japan*)

Short-term Outcomes of Liver Resection in Patients With Hemodialysis. S. KANAKA, Y. AOKI, M. YOSHIOKA, Y. KAWANO, T. SHIMIZU, T. KANDA, R. KONDO, Y. KANEYA, H. YOSHIDA (<i>Tokyo; Chiba, Japan</i>)	2465
Clinicopathological Characteristics of Microscopic Tubal Intraepithelial Metastases from Adenocarcinoma and Small Cell Neuroendocrine Carcinoma of the Uterine Cervix. J. LEE, S. PARK, H.Y. WOO, H.-S. KIM (<i>Seoul; Goyang-si, Republic of Korea</i>).....	2469
Intestinal Barrier Biomarker ZO1 and Endotoxin Are Increased in Blood of Patients With COVID-19-associated Pneumonia. S.F. ASSIMAKOPOULOS, S. MASTRONIKOLIS, A.-L. DE LASTIC, D. ARETHA, D. PAPAGEORGIOU, T. CHALKIDI, I. OIKONOMOU, C. TRIANTOS, A. MOUZAKI, M. MARANGOS (<i>Patras; Heraklion, Greece</i>)	2483
Feasibility and Oncological Safety of Axillary Reverse Mapping in Patients With Locally Advanced Breast Cancer and Partial Response After Neoadjuvant Chemotherapy. M. PELLICCIARO, M. MATERAZZO, C. BUONOMO, G. VANNI (<i>Rome, Italy</i>).....	2489
Diabetes Mellitus as a Prognostic Factor for Locally Advanced Rectal Cancer. D.E. GEORGESCU, T. PATRASCU, T.F. GEORGESCU, A. TULIN, L. MOSOIA, N. BACALBASA, O. STIRU, M.-T. GEORGESCU (<i>Bucharest, Romania</i>).....	2495

High Expression of MTA1 Predicts Unfavorable Survival in Patients With Oral Squamous Cell Carcinoma. K.-Y. LIN, T.-C. SU, C.-M. YEH, W.-R. CHAO, W.-W. SUNG (<i>Taichung; Changhua; Miaoli, Taiwan, ROC</i>).....	2363
Comparison of the Dietary Intake Loss Between Total and Distal Gastrectomy for Gastric Cancer. M. NAKAZONO, T. AOYAMA, T. HAYASHI, K. HARA, K. SEGAMI, Y. SHIMODA, S. NAGASAWA, Y. KUMAZU, T. YAMADA, H. TAMAGAWA, M. SHIOZAWA, S. MORINAGA, Y. RINO, M. MASUDA, T. OGATA, T. OSHIMA (<i>Yokohama, Japan</i>)	2369
Identification of an Optimal Population for Allogeneic Hematopoietic Stem Cell Transplantation in Patients With Mature T and NK Cell Neoplasms. E.H. JUNG, D.-Y. SHIN, J. HONG, I. KIM, S.-S. YOON, Y. KOH, J.M. BYUN (<i>Seoul, Republic of Korea</i>).....	2379
Systemic Inflammatory Response to Different Sclerosing Agents as a Predictor of Pleurodesis Outcome. R. ZABLOCKIS, E. DANILA, V. GRUSLYS, G. CINCILEVIČIŪTĖ (<i>Vilnius, Lithuania</i>).....	2391
Areas to Improve Quality of Life After Ovarian Tumor Surgery and Adjuvant Treatment. A. DOBILAS, L. MOBERG, C. BORGFELDT (<i>Lund, Sweden</i>)	2399
Low Diagnostic Value of Synovial Aspiration Culture Prior to Reimplantation in Periprosthetic Joint Infection. C. MACKE, S. LENHOF, T. GRAULICH, M. ÖRGEL, T. OMAR-PACHA, T. STÜBIG, C. KRETTEK, M. OMAR (<i>Hannover, Germany</i>).....	2409
Clinical Significance of Composition Changes in T-cell Subpopulations After Chemotherapy in Patients With Gastric Cancer. M.-K. YEO, P. SUN, C. CHUG, J.H. PARK, S.H. KANG, H.S. MOON, J.K. SUNG, H.Y. JEONG, J.S. KIM (<i>Daejeon, Republic of Korea</i>)	2417
Expression of LAT1 and 4F2hc in Gastroenteropancreatic Neuroendocrine Neoplasms. Y. HORITA, K. KAIRA, T. KAWASAKI, Y. MIHARA, S. SAKURAMOTO, S. YAMAGUCHI, K. OKAMOTO, S. RYOZAWA, Y. KANAI, M. YASUDA, T. HAMAGUCHI (<i>Saitama; Osaka, Japan</i>)	2425
Time Dependence of Intra-fractional Motion in Spinal Stereotactic Body Radiotherapy. R. HIRAI, Y. OHKUBO, M. IGARI, Y. KUMAZAKI, T. AOSHIKA, Y. RYUNO, S. SAITO, T. ABE, S.-E. NODA, S. KATO (<i>Saitama; Nagano, Japan</i>).....	2433
Clinical Impact of a Novel Model Predictive of Oncotype DX Recurrence Score in Breast Cancer. S. YAMAMOTO, T. CHISHIMA, Y. SHIBATA, F. HARADA, H. TAKEUCHI, A. YAMADA, K. NARUI, T. MISUMI, T. ISHIKAWA, I. ENDO (<i>Yokohama; Tokyo, Japan</i>).....	2439
Whole-brain Radiation Therapy for Intracranial Metastases as Initial or Late Treatment. H. HIRANUMA, N. ISHIBASHI, T. MAEBAYASHI, T. AIZAWA, M. SAKAGUCHI, M. HATA, M. OKADA, Y. GON (<i>Tokyo; Kanagawa, Japan</i>)	2445
Factors Associated With Longitudinal QOL Change in Patients With Chronic Liver Diseases. H. NISHIKAWA, K. YOH, H. ENOMOTO, T. NISHIMURA, S. NISHIGUCHI, H. IJIMA (<i>Nishinomiya; Osaka, Japan</i>).....	2451
Primary Leiomyoma of the Visceral Pleura: An Unexpected Occurrence. C. SAVU, A. MELINTE, A. GIBU, S. VARBAN, C. DUACONU, B. SOCEA, M. DIMITRIU, I. BALESCU, N. BACALBASA (<i>Bucharest, Romania</i>).....	2457

Clinical Outcome After Replacement of Distal Femur/Proximal Tibia in a Heterogeneous Patient Cohort: Function Following Tumour, Trauma, and Loosening. T. GRAULICH, C. KRANZ, C. KORALLUS, M. OERTEL, O.-T. PACHA, M. OMAR, E. LIODAKIS, C. KRETTEK, M. PANZICA (<i>Hannover; Neustadt am Rübenberge, Germany</i>)	2275
Palliative Radiotherapy for Cutaneous Squamous Cell Carcinoma of the Head-and-Neck Region. C. STAACKMANN, S.E. SCHILD, D. RADES (<i>Lübeck, Germany; Scottsdale, AZ, USA</i>)	2283
Emergency Management of Obstructive Colorectal Cancer – A Retrospective Study of Efficacy and Safety in Self-expanding Metallic Stents and Trans-anal Tubes. H. INOUE, T. ARITA, Y. KURIU, H. SHIMIZU, J. KIUCHI, Y. YAMAMOTO, H. KONISHI, R. MORIMURA, A. SHIOZAKI, H. IKOMA, T. KUBOTA, H. FUJIWARA, K. OKAMOTO, E. OTSUJI (<i>Kyoto, Japan</i>).....	2289
Human Epidermal Growth Factor Receptor 2-positive Primary Adenocarcinoma in the Cervical Oesophagus: A Case Report. T. HORINOUCHE, N. YOSHIDA, C. MATSUMOTO, Y. HARA, T. TOIHATA, M. IWATSUKI, Y. BABA, Y. MIYAMOTO, H. BABA (<i>Kumamoto, Japan</i>).....	2297
Lung Shunt Reduction for Yttrium-90 Radioembolization: Chemoembolization Versus Radioembolization. H.-C. KIM, J.W. CHOI, M. LEE, Y.J. KIM, J.C. PAENG, J.W. CHUNG (<i>Seoul, Republic of Korea</i>).....	2305
Non-melanoma Skin Cancer Treated by Contact High-dose-rate Radiotherapy (Brachytherapy): A Mono-institutional Series and Literature Review. L. TAGLIAFERRI, F.G. CIARDO, B. FIONDA, C. CASÀ, A. DI STEFANI, V. LANCELLOTTA, E. PLACIDI, G. MACCHIA, N.D. CAPOCCHIANO, A.G. MORGANTI, G. KOVACS, F. BUSSU, K. PERIS, V. VALENTINI (<i>Rome; Campobasso; Bologna; Sassari, Italy</i>).....	2313
Impact of Immune-related Adverse Events on Nivolumab Efficacy in Patients With Upper Gastrointestinal Cancer. E. BOOKA, H. KIKUCHI, R. HANEDA, W. SONEDA, S. KAWATA, T. MURAKAMI, T. MATSUMOTO, Y. HIRAMATSU, H. TAKEUCHI (<i>Shizuoka, Japan</i>)	2321
Accurate Monitoring of Parkinson’s Disease Symptoms With a Wearable Device During COVID-19 Pandemic. K.I. TSAMIS, G. RIGAS, K. NIKOLAOS, D.I. FOTIADIS, S. KONITSIOTIS (<i>Ioannina, Greece</i>)..	2327
Extremely Advanced Breast Cancer Presentation: Possible Effect of Coronavirus Pandemic Anxiety. G. VANNI, F. SANTORI, M. PELLICCIARO, M. MATERAZZO, J. CASPI, A.V. GRANAI, A. DE MAJO, F. SERVADEI, E. GIACOBBI, T. PERRETTA, R. MEUCCI, C.A. PISTOLESE, O.C. BUONOMO (<i>Rome, Italy</i>).....	2331
Synchronous Resection of Parotid Metastasis With Esophagectomy: A Case Report. H. SUZUKI, T. ABE, E. SASAKI, T. NAGAO, A. MURASHIMA, H. FUJIEDA, E. HIGAKI, N. HANAI (<i>Nagoya, Japan</i>)	2337
A Gender Comparison of Bone Metabolic Changes After Gastric Cancer Surgery: A Prospective Observational Study. Y. ATSUMI, Y. RINO, T. AOYAMA, N. OKUDA, S. KAWAHARA, K. KAZAMA, M. NUMATA, H. TAMAGAWA, T. OSHIMA, N. YUKAWA, M. MASUDA (<i>Yokohama, Japan</i>)	2341
Role of the Prognostic Nutritional Index in Patients With Soft-tissue Sarcoma. Y. MATSUYAMA, T. NAKAMURA, K. YOSHIDA, K. NAKAMURA, T. HAGI, K. ASANUMA, A. SUDO (<i>Tsu, Japan</i>).....	2349
Aggravation of Hemorrhoids in Patients With Cervical Cancer Undergoing Radiotherapy: A Nationwide Population-based Study. I. SEO, H. JANG (<i>Gyeongju, Republic of Korea</i>)	2357

Clinical Studies

- Chronic Treatment of an Advanced Prostate-cancer Patient With Oral Methioninase Resulted in Long-term Stabilization of Rapidly Rising PSA Levels. Q. HAN, R.M. HOFFMAN (*San Diego, CA, USA*)... 2171
- Pulmonary Artery Dilatation Is a Common Finding in a Coronary Artery CT Angiography Population. S.P. KAUKANEN, T. LIIMATAINEN, M. KORHONEN, J. PARKKONEN, J. VIENONEN, R. VANNINEN, M. HEDMAN (*Kuopio; Oulu, Finland*)..... 2177
- Midterm Results Following Minimally Invasive Distal Chevron Osteotomy: Comparison With the Minimally Invasive Reverdin-Isham Osteotomy by Means of Meta-analysis. G. KAUFMANN, D. WEISKOPF, M. LIEBENSTEINER, H. ULMER, M. BRAITO, F. ENDSTRASSER, M. WAGNER, M. BAN, D. DAMMERER (*Innsbruck; St. Johann in Tirol, Austria*)..... 2187
- Finite Element Analysis of an Improved Correction System for Spinal Deformity. Z. HE, M. ZHANG, W. LI, Z. LONG, L. WANG, Q.Q. LI, X. LU (*Baise; Guangzhou; Yongkang, PR China; Bethesda, MD, USA*) 2197
- Relevance of Circulating Nucleosomes, HMGB1 and sRAGE for Prostate Cancer Diagnosis. M.M. GARRIDO, R.M. RIBEIRO, K. KRÜGER, L.C. PINHEIRO, J.T. GUIMARÃES, S. HOLDENRIEDER (*Lisbon; Porto, Portugal; Munich, Germany*) 2207
- Excision of Wilms' Tumor With Atrial Extension Under Moderate Hypothermia and Cerebral Perfusion. C. BULESCU, R. DUBOIS, F. HAMEURY, R. HENAINE (*Bron, France*)..... 2213
- Can Dynamic Contrast-enhanced MRI Contribute to Improved Assessment of Rectosigmoid Involvement in Deep Infiltrating Endometriosis? D. HAUSMANN, V. PERIGNON, R. GRABHERR, E. WEILAND, M.D. NICKEL, M. MURER, L. BOSSHARD, M. PRUMMER, R.A. KUBIK-HUCH (*Baden; Zurich, Switzerland; Mannheim; Erlangen, Germany*) 2217
- Relationships of Reference Points, Planes and Skull Symmetry on Posterior-anterior Cephalograms in Healthy Young Adults. R.E. FRIEDRICH, G. CHRIST, H.T. SCHEUER, H.A. SCHEUER (*Hamburg, Germany*)..... 2227
- Multicenter Study of Carbon-ion Radiotherapy for Oropharyngeal Non-squamous Cell Carcinoma. T. KANEKO, H. SUEFUJI, M. KOTO, Y. DEMIZU, J.-I. SAITOH, H. TSUJI, T. OKIMOTO, T. OHNO, Y. SHIOYAMA, K. NEMOTO, T. NAKANO, T. KAMADA (*Tosu; Chiba; Tatsuno; Toyama; Maebashi; Yamagata; Kanagawa, Japan*)..... 2239
- Pathological Complete Response and Successful Conversion Surgery After Nivolumab Therapy for Stage IV Oesophagogastric Junction Cancer. T. KUMAMOTO, T. TOMITA, Y. HOJO, T. NAKAMURA, Y. KURAHASHI, Y. ISHIDA, H. MIWA, S. HIROTA, H. SHINOHARA (*Hyogo, Japan*)..... 2247
- Sleep Disorders Before and During the COVID-19 Pandemic in Patients Assigned to Adjuvant Radiotherapy for Breast Cancer. D. RADES, C.A. NARVAEZ, S.E. SCHILD, S. TVILSTED, T.W. KJAER (*Lübeck, Germany; Scottsdale, AZ, USA; Koege; Roskilde, Denmark*) 2253
- Clinicopathological Characteristics of Gastric-type Endocervical Adenocarcinoma Misdiagnosed as an Endometrial, Ovarian or Extragenital Malignancy, or Mistyped as Usual-type Endocervical Adenocarcinoma. H.H. KOH, Y.Y. JUNG, H.-S. KIM (*Seoul, Goyang-si, Republic of Korea*) 2261

Effect of Genistein Supplementation on the Progression of Neoplasms and the Level of the Modified Nucleosides in Rats With Mammary Cancer. K. BANYŚ, J. GIEBULTOWICZ, M. SOB CZAK, R. WYREBIAK, W. BIELECKI, R. WRZESIEN, B. BOBROWSKA-KORCZAK (<i>Warsaw, Poland</i>)	2059
Detection of Novel Urine Markers Using Immune Complexome Analysis in Bladder Cancer Patients: A Preliminary Study. N. AIBARA, Y. MIYATA, K. ARAKI, Y. SAGARA, K. MITSUNARI, T. MATSUO, K. OHBA, Y. MOCHIZUKI, H. SAKAI, K. OHYAMA (<i>Nagasaki, Japan</i>).....	2073
Development and Accuracy Evaluation of Augmented Reality-based Patient Positioning System in Radiotherapy: A Phantom Study. K. TARUTANI, H. TAKAKI, M. IGETA, M. FUJIWARA, A. OKAMURA, F. HORIO, Y. TOUDOU, S. NAKAJIMA, K. KAGAWA, M. TANOOKA, K. YAMAKADO (<i>Hyogo, Japan</i>).....	2081
Residual Set Up Errors of the Surrogate-guided Registration Using Four-dimensional CT Images and Breath Holding Ones in Respiratory Gated Radiotherapy for Liver Cancer. Y. UEDA, M. TSUJII, S. OHIRA, I. SUMIDA, M. MIYAZAKI, T. TESHIMA (<i>Osaka, Japan</i>)	2089
Role of S100A4 in the Pathogenesis of Human Periapical Granulomas. T. TAMURA, T. MIYATA, K. HATORI, K. HIMI, T. NAKAMURA, Y. TOYAMA, O. TAKEICHI (<i>Tokyo, Japan</i>).....	2099
Complex Modulating Effects of Dietary Calcium Intake on Obese Mice. M. TAKAHASHI, T. HAMOYA, T. NARITA, G. FUJII, Y. TOTSUKA, M. HAGIO, K. TASHIRO, M. KOMIYA, M. MUTOH (<i>Tokyo; Kyoto; Chigasaki; Fukuoka, Japan</i>).....	2107
Efficient Stool Collection Methods for Evaluating the Diarrhea Score in Mouse Diarrhea Models. S.K. YIM, S.W. KIM, S.T. LEE (<i>Jeonju, Republic of Korea</i>).....	2115
Integrin α 5B1 Mediated Cellular Reorganization in Human Mesenchymal Stem Cells During Neuronal Differentiation. N. KARAKAŞ, Ü. KILIH (<i>Istanbul, Turkey</i>)	2127
Novel NR4A1 Arg293Ser Mutation in Patients With Familial Crohn's Disease. K. MASAGO, S. FUJITA (<i>Aichi; Kobe, Japan</i>).....	2135
Oridonin Attenuates the Effects of Chronic Alcohol Consumption Inducing Oxidative, Glycative and Inflammatory Injury in the Mouse Liver. S.-L. YAN, C.-S. HUANG, M.-C. MONG, M.-C. YIN (<i>Lukang; Taichung, Taiwan, ROC</i>).....	2141
Development of a Bioluminescent Human Osteosarcoma Model in Humanized NSG Mice: A Pilot Study. Y. KO, Y.H. JEONG, J.-H. SEO, J.A. LEE (<i>Goyang; Chuncheon; Seoul, Republic of Korea</i>).....	2151
Ureteric Bud-derivatives in Wilms Tumor and Nephrogenic Rest. B. SARKANY, G. KOVACS, D. BANYAI (<i>Pecs; Heidelberg, Germany</i>).....	2159
Concomitant Use of High-dose Methotrexate and Glycyrrhizin Affects Pharmacokinetics of Methotrexate, Resulting in Hepatic Toxicity. K. ABE, T. HIGURASHI, M. TAKAHASHI, A. MAEDAMINAMI, Y. KAWANO, S. MIYAZAKI, Y. MANO (<i>Chiba; Tokyo, Japan</i>).....	2163

Experimental Studies

- A Patient-Derived Orthotopic Xenograft Model of Gastroesophageal-Junction Adenocarcinoma Translated to the Clinic by Tumor-Targeting Fluorescent Antibodies to Carcinoembryonic-Antigen-Related Cell-Adhesion Molecules. M.A. TURNER, S. AMIRFAKHRI, H. NISHINO, T.M. LWIN, T.J. SAVIDES, T.R. REID, B.B. SINGER, R.M. HOFFMAN, M. BOUVET (*San Diego, CA, USA; Essen, Germany*) 1959
- Optimizing Conditions for Spheroid Formation of Dental Pulp Cells in Cell Culture. Y. ZHENG, L. JIANG, M. YAN, M. GOSAU, R. SMEETS, L. KLUWE, R.E. FRIEDRICH (*Hamburg, Germany*) 1965
- IL-4 Counteracts the Cytotoxic Effects of Peripheral Blood Mononuclear Cells on Hormone-sensitive Prostate Cancer Cells. H.H.H. ERB, Z. CULIG, M.B. STOPE (*Dresden; Düsseldorf; Bonn, Germany; Innsbruck, Austria*)..... 1973
- The First Mouse Model of Primary Osteosarcoma of the Breast. N.F. WU, J. WU, J. YAMAMOTO, Y. AOKI, C. HOZUMI, M. BOUVET, R.M. HOFFMAN (*San Diego, CA; Cambridge, MA, USA; Narita, Japan*) 1979
- Psoriasis-like Inflammation Induced in an Air-pouch Mouse Model. F.T. CHARITIDIS, D.S.M. DAMLUND, J. KOCH (*Ballerup, Denmark*)..... 1985
- Effect of NOS Inhibitors and Anticoagulants on Nitric Oxide Production in a Tissue-factor Induced Rat DIC Model. Y. SUGA, Y. TAKAHASHI, T. SHIMADA, S. YAMADA, E. MORISHITA, H. ASAKURA (*Kanazawa, Japan*) 1999
- Traditional Chinese Medicine Xihuang Wan Inhibited Lewis Lung Carcinoma in a Syngeneic Model, Equivalent to Cytotoxic Chemotherapy, by Altering Multiple Signaling Pathways. Z. ZHANG, J. WANG, H. DUAN, D. LIU, X. ZHOU, X. LIN, H. PANG, M. SUN, T. ZHOU, R.M. HOFFMAN, K. HU (*Beijing, PR China; San Diego, USA*)..... 2005
- The Combination PARP Inhibitor Olaparib With Temozolomide in an Experimental Glioblastoma Model. K. HWANG, J.-H. LEE, S.H. KIM, K.-O GO, S.Y. JI, J.H. HAN, C.-Y. KIM (*Seongnam-si; Seoul; Gyengsangnam-do, Republic of Korea; Auckland, New Zealand*)..... 2015
- High Pathological Reproducibility of Diet-induced Atherosclerosis in Microminipigs via Cloning Technology. M. OTAKE, H. KAWAGUCHI, S. ENYA, A. KANGAWA, T. KOGA, K. MATSUO, S. YAMADA, M.M. RAHMAN, N. MIURA, M. SHIBATA, A. TANIMOTO (*Kikugawa; Kagoshima; Towadashi; Kahoku, Japan*)..... 2025
- Cytocompatibility of Bone Substitute Materials and Membranes. S. SCHAFFER, H. AL-QADDO, M. GOSAU, R. SMEETS, P. HARTJEN, R.E. FRIEDRICH, O.A. NADA, T. VOLLKOMMER, A. RASHAD (*Hamburg; Aachen, Germany*)..... 2035
- Significant Association of Cyclin D1 Promoter Genotypes With Asthma Susceptibility in Taiwan. C.-H. LI, K.-L. CHIU, T.-C. HSIA, T.-C. SHEN, L.-H. CHEN, C.-C. YU, M.-C. MONG, W.-S. CHANG, C.-W. TSAI, D.-T. BAU (*Taichung; Hualien, Taiwan, ROC*)..... 2041
- Tetrandrine Enhances H₂O₂-Induced Apoptotic Cell Death Through Caspase-dependent Pathway in Human Keratinocytes. Y.-C. CHENG, C.-L. KUO, S.-Y. HSU, T.-D. WAY, C.-L. CHENG, J.-C. CHEN, K.-C. LIU, S.-F. PENG, W.-J. HO, F.-S. CHUEH, W.-W. HUANG (*Taichung; Tainan; Changhua, Taiwan, ROC*)..... 2047