

Instructions for Authors 2021

General Policy. IN VIVO is a multidisciplinary journal designed to bring together original high quality works and reviews on experimental and clinical biomedical research within the frames of human physiology, pathology and disease management. The topics of IN VIVO include: 1. Experimental development and application of new diagnostic and therapeutic procedures; 2. Pharmacological and toxicological evaluation of new drugs, drug combinations and drug delivery systems; 3. Clinical trials; 4. Development and characterization of models of biomedical research; 5. Cancer diagnosis and treatment; 6. Immunotherapy and vaccines; 7. Radiotherapy, Imaging; 8. Tissue engineering, Regenerative medicine; 9. Carcinogenesis; Each article should include a concrete conclusion constituting of a “new piece of knowledge” backed up by scientific evidence. 10. Retrospective studies and case reports. The principal aim of IN VIVO is to provide for the prompt online publication for accepted articles, generally within 1-2 months from final acceptance.

Manuscripts will be accepted on the understanding that they report original unpublished works that are not under consideration for publication by another journal, and that they will not be published again in the same form. All authors should sign a submission letter confirming the approval of their article contents. All material submitted to IN VIVO will be subject to peer-review, when appropriate, by two members of the Editorial Board. All manuscripts submitted to IN VIVO are urgently treated with absolute confidence, with access restricted to the Managing Editor, the journal’s secretary, the reviewers and the printers. The Editors reserve the right to improve manuscripts on grammar and style.

The use of animals in biomedical research should take place under careful supervision of a person adequately trained in this field and the animals must be treated humanely at all times. Such research should adhere to the Guiding Principles in the Care and Use of Animals approved by the Council of the American Physiological Society.

The Editors and Publishers of IN VIVO accept no responsibility for the contents and opinions expressed by the contributors. Authors should warrant due diligence in the creation and issuance of their work.

Open Access Policy. IN VIVO appears bimonthly as an online-only open access journal through the Stanford University HighWire Press. Upon acceptance, Authors will be asked to pay an online publication fee of USD 800.00 (effective January 1, 2021) for articles up to 8 online pages (including figures and tables). Each additional excess page will be charged USD 60.00. Color will not be charged. Authors from developing countries may apply for a 25% discount after the acceptance of their paper. IN VIVO online will keep the volume and issue numbers, as well as page numbering.

Copyright. Authors retain copyright. The unrestricted non-commercial use, distribution and reproduction in any medium of IN VIVO articles for academic reasons is allowed, provided that the original work is properly cited. The Authors grant the permanent right to the publisher to use any articles published in this journal without any restriction, including academic advertising purposes. PDF, XML and html files of all articles published in IN VIVO are the property of the publisher.

Format. Two types of papers may be submitted: (i) Full papers containing completed original work, and (ii) review articles concerning fields of recognisable progress. Papers should contain all essential data in order to make the presentation clear. Papers should be written in clear, concise English. Spelling should follow that given in the “Shorter Oxford English Dictionary”.

Manuscripts. Manuscripts should be divided into the following sections: (a) *First page* including the title of the presented work [not exceeding fifteen (15) words], full names and full postal addresses of all Authors, name of the Author to whom proofs are to be sent, key words, an abbreviated running title, an indication “review”, “clinical”, “epidemiological”, or “experimental” study, and the date of submission. (Note: The order of the Authors is not necessarily indicative of their contribution to the work. Authors may note their individual contribution(s) in the appropriate section(s) of the presented work); (b) *Abstract* not exceeding 150 words, organized according to the following headings: Background/Aim – Materials and Methods/Patients and Methods – Results – Conclusion; (c) *Introduction*; (d) *Materials and Methods/Patients and Methods*; (e) *Results*; (f) *Discussion*; (g) *Conflicts of Interest*; (h) *Authors’ contributions*; (i) *Acknowledgements*; (j) *References*. All pages must be numbered consecutively. Footnotes should be avoided. Review articles may follow a different style according to the subject matter and the Author’s opinion. Review articles should not exceed 35 pages (approximately 250 words per double-spaced typed page) including all tables, figures, and references.

Figures. All figures should appear **at the end** of the submitted document file. Once a manuscript is accepted all figures and graphs should be submitted separately in either jpg, tiff or pdf format and at a minimum resolution of 300 dpi. Graphs must be submitted as pictures made from drawings and must not require any artwork, typesetting, or size modifications. Symbols, numbering and lettering should be clearly legible. The number and top of each figure must be indicated. Pages that include color figures are not subject to color charges.

Tables. All tables should appear **at the end** of the submitted document file. Once a manuscript is accepted, each table should be submitted separately, typed double-spaced. Tables should be numbered with Roman numerals and should include a short title.

References. Authors must assume responsibility for the accuracy of the references used. Citations for the reference sections of submitted works should follow the form below and must be numbered consecutively. In the text, references should be cited by number in parenthesis. Examples: 1 Kenyon J, Liu W and Dalglish A: Report of objective clinical responses of cancer patients to pharmaceutical-grade synthetic cannabidiol. *Anticancer Res* 38(10): 5831-5835, 2018. PMID: 30275207. DOI: 10.21873/anticancer.12924. (PMIDs and DOIs only if applicable). 2 McGuire WL and Chamnes GC: Studies on the oestrogen receptor in breast cancer. In: *Receptors for Reproductive Hormones*. O' Malley BW, Chamnes GC (eds.). New York, Plenum Publ Corp., pp 113-136, 1973. 3 Global Health Estimates 2015: Disease Burden by Cause, Age, Sex, by Country and by Region, 2000-2015. Geneva, World Health Organisation, 2016. Available at http://www.who.int/healthinfo/global_burden_disease/estimates/en/index2.html. Last accessed on 3rd April 2018. (The web address should link directly to the cited information and not to a generic webpage).

Nomenclature and Abbreviations. Nomenclature should follow that given in "Chemical Abstracts", "Index Medicus", "Merck Index", "IUPAC -IUB", "Bergey's Manual of Determinative Bacteriology", The CBE Manual for Authors, Editors and Publishers (6th edition, 1994), and MIAME Standard for Microarray Data. Human gene symbols may be obtained from the HUGO Gene Nomenclature Committee (HGNC) (<http://www.gene.ucl.ac.uk/>). Approved mouse nomenclature may be obtained from <http://www.informatics.jax.org/>. Standard abbreviations are preferable. If a new abbreviation is used, it must be defined on first usage.

Clinical Trials. Authors of manuscripts describing clinical trials should provide the appropriate clinical trial number in the correct format in the text.

For International Standard Randomised Controlled Trials (ISRCTN) Registry (a not-for-profit organization whose registry is administered by Current Controlled Trials Ltd.) the unique number must be provided in this format: ISRCTNXXXXXXXX (where XXXXXXXX represents the unique number, always prefixed by "ISRCTN"). Please note that there is no space between the prefix "ISRCTN" and the number. Example: ISRCTN47956475.

For Clinicaltrials.gov registered trials, the unique number must be provided in this format: NCTXXXXXXXX (where XXXXXXXX represents the unique number, always prefixed by "NCT"). Please note that there is no space between the prefix "NCT" and the number. Example: NCT00001789.

Ethical Policies and Standards. IN VIVO agrees with and follows the "Uniform Requirements for Manuscripts Submitted to Biomedical Journals" established by the International Committee of Medical Journal Editors in 1978 and updated in October 2001 (www.icmje.org). Microarray data analysis should comply with the "Minimum Information About Microarray Experiments (MIAME) standard". Specific guidelines are provided at the "Microarray Gene Expression Data Society" (MGED) website. Presentation of genome sequences should follow the guidelines of the NHGRI Policy on Release of Human Genomic Sequence Data. Research involving human beings must adhere to the principles of the Declaration of Helsinki and Title 45, U.S. Code of Federal Regulations, Part 46, Protection of Human Subjects, effective December 13, 2001. Research involving animals must adhere to the Guiding Principles in the Care and Use of Animals approved by the Council of the American Physiological Society. The use of animals in biomedical research should be under the careful supervision of a person adequately trained in this field and the animals must be treated humanely at all times. Research involving the use of human foetuses, foetal tissue, embryos and embryonic cells should adhere to the U.S. Public Law 103-41, effective December 13, 2001.

Submission of Manuscripts. Please follow the Instructions for Authors regarding the format of your manuscript and references. Manuscripts must be submitted only through our online submission system at: <http://www.iar-submissions.com/login.html> In case a submission is incomplete, the corresponding Author will be notified accordingly. Questions regarding difficulties in using the online submission system should be addressed to: email: journals@iar-anticancer.org

Galley Proofs. Unless otherwise indicated, galley proofs will be sent to the corresponding Author of the submission. Corrections of galley proofs should be limited to typographical errors. Galley proofs should be returned corrected to the Editorial Office by email within two days.

Specific information and additional instructions for Authors

1. In Vivo (IV) will consider the publication of conference proceedings and/or abstracts provided that the material submitted fulfils the quality requirements and instructions of the journal, following the regular review process by two suitable referees.
2. An acknowledgement of receipt, including the article number, title and date of receipt is sent to the corresponding author of each manuscript upon receipt. If this receipt is not received within 20 days from submission, the author should call or write to the Editorial Office to ensure that the manuscript (or the receipt) was not lost in the mail.

3. Each manuscript submitted to IV is sent for peer-review in confidence to two suitable referees with the request to return the manuscript with their comments to the Editorial Office within 12 days from receipt. If reviewers need a longer time or wish to send the manuscript to another expert, the manuscript may be returned to the Editorial Office with a delay. All manuscripts submitted to IV, are treated in confidence, without access to any person other than the Managing Editor, the journal's secretary, the reviewers and the printers.
4. All accepted manuscripts are carefully corrected in style and language, if necessary, to make presentation clear. (There is no fee for this service). Every effort is made (a) to maintain the personal style of the author's writing and (b) to avoid change of meaning. Authors will be requested to examine carefully manuscripts which have undergone language correction at the pre-proof or proof stage.
5. Authors should pay attention to the following points when writing an article for IN VIVO:
 - The Instructions to Authors must be followed in every detail.
 - The presentation of the experimental methods should be clear and complete in every detail facilitating reproducibility by other scientists.
 - The presentation of results should be simple and straightforward in style. Results and discussion should not be combined into one section, unless the paper is short.
 - Results given in figures should not be repeated in tables.
 - Figures (graphs or photographs) should be prepared at a width of 8 or 17 cm with legible numbers and lettering.
 - Photographs should be clear with high contrast, presenting the actual observation described in the legend and in the text. Each legend should provide a complete description, being self-explanatory, including technique of preparation, information about the specimen and magnification.
 - Statistical analysis should be elaborated wherever it is necessary. Simplification of presentation by giving only numerical or % values should be avoided.
 - Fidelity of the techniques and reproducibility of the results, should be points of particular importance in the discussion section. Authors are advised to check the correctness of their methods and results carefully before writing an article. Probable or dubious explanations should be avoided.
 - Authors should not cite results submitted for publication in the reference section. Such results may be described briefly in the text with a note in parenthesis (submitted for publication by... authors, year).
 - References. Each article should address, list and discuss the entire spectrum of current publications relevant to its field.
 - By following these instructions, Authors will facilitate a more rapid review and processing of their manuscripts and will provide the readers with concise and useful papers.
6. Following review and acceptance, a manuscript is examined in language and style, and galley proofs are rapidly prepared. Second proofs are not sent unless required.
7. Authors should correct their galley proofs very carefully and preferably twice. An additional correction by a colleague always proves to be useful. Particular attention should be paid to chemical formulas, mathematical equations, symbols, medical nomenclature etc. Any system of correction marks can be used in a clear manner, preferably with a red pen. Additions or clarifications are allowed provided that they improve the presentation but do not bring new results (no fee).
8. Articles submitted to IN VIVO may be rejected without review if:
 - they do not fall within the journal's policy.
 - they do not follow the instructions for authors.
 - language is unclear.
 - results are not sufficient to support a final conclusion.
 - results are not objectively based on valid experiments.
 - they repeat results already published by the same or other authors before the submission to IV.
 - plagiarism is detected by plagiarism screening services.(Rejection rate (2020): 64%).
9. Authors who wish to prepare a review should contact the Managing Editor of the journal in order to get confirmation of interest in the particular topic of the review and to allow programming of space availability. The expression of interest by the Managing Editor does not necessarily imply acceptance of the review by the journal.
10. Authors may inquire information about the status of their manuscript(s) by calling the Editorial Office at +30-22950-53389, Monday to Friday 9.00-16.00 (Athens time), or by sending an e-mail to journals@iiar-anticancer.org.
11. Authors who wish to edit a special issue on a particular topic should contact the Managing Editor.
(This text is a combination of advice and suggestions contributed by Editors, Authors, Readers and the Managing Editor of IV).

ANTICANCER RESEARCH

International Journal of Cancer Research and Treatment

ISSN: 0250-7005

Contents

Review

Current Treatment of Colorectal Liver Metastasis as a Chronic Disease. N.M. DÖRR, M. BARTELS, M.H. MORGUL. (Leipzig; Münster, Germany)..... 1

Experimental Studies

SAHA and EGCG Promote Apoptosis in Triple-negative Breast Cancer Cells, Possibly Through the Modulation of cIAP2. K.L. STEED, H.R. JORDAN, T.O. TOLLEFSBOL. (Birmingham, AL, USA)..... 9

Genetic Polymorphisms in IL-10 Promoter Are Associated With Smoking and Prostate Cancer Risk in African Americans. M. ABBAS, T. MASON, A. IBAD, M. KHRAJESH, V. APPREY, Y. KANAAN, B. WILSON, G. DUNSTON, L. RICKS-SANTI, H. BRIM. (Washington, DC; Silver Spring, MD; Hampton, VA, USA)..... 27

High Expression of *c-Met*, *PKC ζ* and *ALDH1A3* Predicts a Poor Prognosis in Late-stage Breast Cancer. H. MOTOMURA, Y. NOZAKI, C. ONAGA, A. OZAKI, S. TAMORI, T.-A. SHINA, S. KANAI, C. OHIRA, Y. HARA, Y. HARADA, R. TAKASAWA, T. HANAWA, S.-I. TANUMA, Y. MANO, T. SATO, K. SATO, K. AKIMOTO. (Chiba, Japan)..... 35

Targeting Fibroblast Growth Factor Receptor (FGFR) and Phosphoinositide 3-kinase (PI3K) Signaling Pathways in Mesothelioma Cell Lines. S. HÖLZHAUSER, M. LEIKOŠVIČIUTE, T. ANDONOVA, R.G. URSU, T. DALIANIS, M. WICKSTRÖM, O.N. KOSTOPOULOU. (Stockholm, Sweden; Iasi, Romania)..... 53

Cisplatin Induced the Expression of *SEI1* (*TBP1-Br1*) Oncogene in Human Oral Squamous Cancer Cell Lines. J. LI, Z. VANGUNDY, M. POI. (Columbus, OH, USA)..... 67

Contents continued on the back cover

ISSN (online): 1791-7530 / ISSN (print): 0250-7005

General Policy

- **ANTICANCER RESEARCH** is an independent international forum devoted to the rapid publication of original high quality articles and reviews on all aspects of experimental and clinical oncology. Prompt evaluation of all submitted articles in confidence and rapid publication within 1-2 months from acceptance are guaranteed.
- **ANTICANCER RESEARCH** is published monthly by the International Institute of Anticancer Research and is available online with Stanford University HighWire Press.
- **Editorial Office:** International Institute of Anticancer Research, 1st km Kapandritiou-Kalamou Rd., P.O. Box 22, Kapandriti, Attiki 19014, Greece. Tel: +30 22950 52945, Fax: +30 22950 53389.
- **U.S. Branch:** Anticancer Research Inc., USA, 111 Bay Avenue, Highlands, NJ, USA.
- **E-mail:** journals@iiar-anticancer.org; IAR WEBSITES: www.iiar-anticancer.org and www.iiarjournals.org

● Selection of Recent Articles

The Development of Next-generation PBMC Humanized Mice for Preclinical Investigation of Cancer Immunotherapeutic Agents. Y.M. MORILLON II, A. SABZEVARI, J. SCHLOM, J.W. GREINER (Bethesda, MD, USA)

Human NK-92 Cells Function as Target Cells for Human NK Cells – Implications for CAR NK-92 Therapies. H. BERGMAN, N. SISSALA, H. HÄGERSTRAND, C. LINDQVIST (Turku, Finland)

Activation of Toll-Like Receptor 2 Promotes Proliferation of Human Lung Adenocarcinoma Cells. A.K. GERGEN, P.D. KOHTZ, A.L. HALPERN, A. LI, X. MENG, T.B. REECE, D.A. FULLERTON, M.J. WEYANT (Aurora, CO, USA)

A Gemcitabine Plus 5-Fluorouracil Combination Inhibits Gastric-Cancer Liver Metastasis in a PDOX Model: A Novel Treatment Strategy. N. SUGISAWA, H. NISHINO, T. HIGUCHI, J.H. PARK, J. YAMAMOTO, Y. TASHIRO, K. KAWAGUCHI, M. BOUVET, M. UNNO, R.M. HOFFMAN (San Diego, CA, USA; Sendai, Japan)

Expression of ATP-binding Cassette Transporter 11 (ABCC11) Protein in Colon Cancer. Y. YAMADA, K. YOSHIMATSU, H. YOKOMIZO, S. OKAYAMA, S. SHIOZAWA (Tokyo, Japan)

Genomic Database Analysis for Head and Neck Cancer Prevention Targets: MTOR Signal Transduction Pathway. C. KOENIGSBERG, F.G. ONDREY (Minneapolis, MN, USA)

Presence of the Transmembrane Protein Neuropilin in Cytokine-induced Killer Cells. E.V. DÍEZ GARCÍA DE OLALLA, F. GAROFANO, H. WEIHER, M. MUDERS, S. FÖRSTER, I.G.H. SCHMIDT-WOLF (Bonn; Rheinbach, Germany)

Association of Caspase-8 Genotypes With the Risk for Nasopharyngeal Carcinoma in Taiwan. L.-C. SHIH, C.-W. TSAI, W.-S. CHANG, T.-C. SHEN, Y.-C. WANG, J.-S. YANG, M.-L. LIN, Z.-H. WANG, D.-T. BAU (Taichung, Taiwan, ROC)

Mogamulizumab Plus EPOCH Therapy for Patients With Newly Diagnosed Aggressive Adult T-cell Leukemia/lymphoma. T. JO, K. MATSUZAKA, H. SHIOYA, H. TOMINAGA, T. SAKAI, Y. KANEKO, S. HAYASHI, M. MATSUO, J. TAGUCHI, K. ABE, K. SHIGEMATSU, R. KUBOTA-KOKETSU (Nagasaki; Osaka, Japan)

WNT Signaling Driven by R-spondin 1 and LGR6 in High-grade Serous Ovarian Cancer. S. LEE, J. JUN, W.J. KIM, P. TAMAYO, S.B. HOWELL (Seoul, Republic of Korea; San Diego, CA, USA)

Characterization of a Novel Barbituric Acid and Two Thiobarbituric Acid Compounds for Lung Cancer Treatment. S.Y. LEE, B. SLAGLE-WEBB, A.K. SHARMA, J.R. CONNOR (Hershey, PA, USA)

An Autocrine Role for CXCL1 in Progression of Hepatocellular Carcinoma. K.J.V. DAHLQUIST, L.C. VOTH, A.J. FEE, A.K. STOECKMAN (Saint Paul, MN, USA)

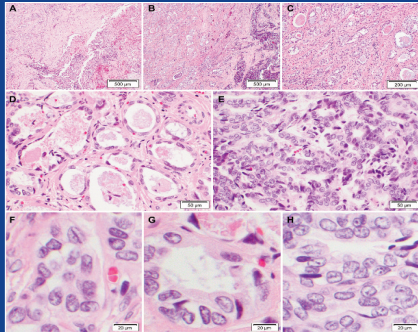
Apoptosis-related Proteins Are Altered by Selective Tyrosine Kinase Inhibitors and Everolimus in HPV-dependent SCC. R. BIRK, A. SCHELL, C. ADERHOLD, S. HOCH, L. HUBER, C.E. MUELLER, A. LAMMERT, C. SCHERL, N. ROTTER, J.U. SOMMER, B. KRAMER (Marburg; Mannheim; Wuppertal, Germany)

Targeting Membrane HDM-2 by PNC-27 Induces Necrosis in Leukemia Cells But Not in Normal Hematopoietic Cells. A. THADI, L. LEWIS, E. GOLDSTEIN, A. AGGARWAL, M. KHALILI, L. STEELE, B. POLYAK, S. SEYDAFKAN, M.H. BLUTH, K.A. WARD, M. STYLER, P.M. CAMPBELL, M.R. PINCUS, W.B. BOWNE (Philadelphia, PA; Brooklyn, NY; Detroit, MI, USA)

Phase I Study of LFA102 in Patients With Advanced Breast Cancer or Castration-resistant Prostate Cancer. H. MINAMI, Y. ANDO, K. TAMURA, T. TAJIMA, R. ISAACS (Kobe; Nagoya; Tokyo, Japan; East Hanover, NJ, USA)

CANCER GENOMICS & PROTEOMICS

ISSN (online): 1790-6245



Published by the International Institute of Anticancer Research

Online ISSN: 1790-6245

General Policy

- **CANCER GENOMICS & PROTEOMICS (CGP)** welcomes submissions of original high quality articles and reviews on all aspects of the application of genomic and proteomic technologies to experimental and clinical cancer research. The journal's scientific spectrum includes: (a) molecular causes of carcinogenesis, cancer progression and metastasis; (b) structural and functional aspects of genes in the cancer cell; (c) advances in genomic and proteomic technologies applicable to cancer research; (d) anticancer drug design and drug development. A main aim of CGP is to ensure the prompt and confidential review, and rapid publication of original works and reviews, generally within 1-3 months from submission.
- CGP is published bimonthly by the **International Institute of Anticancer Research (IIAR)** and is available online only and open access with **Stanford University HighWire Press**. For more information please visit our website www.cgip.iiarjournals.org.
- **Editorial Office:** International Institute of Anticancer Research, 1st km Kapandritiou-Kalamou Rd., P.O. Box 22, Kapandriti, Attiki 19014, Greece. Tel: +30 22950 52945, Fax: +30 22950 53389.
- **U.S. Branch:** Anticancer Research Inc., USA, 111 Bay Avenue, Highlands, NJ, USA.
- **E-mail:** journals@iiar-anticancer.org; IIAR WEBSITES: www.iiar-anticancer.org and www.iiarjournals.org

● Selection of Recent Articles

Micro RNAs Promoting Growth and Metastasis in Preclinical *In Vivo* Models of Subcutaneous Melanoma. U.H. WEIDLE, S. AUSLÄNDER, U. BRINKMANN (*Penzberg, Germany*)

Differential Proteomic Analysis of Hepatocellular Carcinomas from *Ppp2r5d* Knockout Mice and Normal (Knockout) Livers. C. LAMBRECHT, G.B. FERREIRA, J.D. OMELLA, L. LIBBRECHT, R. DE VOS, R. DERUA, C. MATHIEU, L. OVERBERGH, E. WAELEKENS, V. JANSSENS (*Leuven; Brussels, Belgium*)

Stem-like Cells from Invasive Breast Carcinoma Cell Line MDA-MB-231 Express a Distinct Set of Eph Receptors and Ephrin Ligands. M. LUCERO, J. THIND, J. SANDOVAL, S. SENAATI, B. JIMENEZ, R.P. KANDPAL (*Pomona, CA, USA*)

Circulating Tumor DNA in Biliary Tract Cancer: Current Evidence and Future Perspectives. A. RIZZO, A.D. RICCI, S. TAVOLARI, G. BRANDI (*Bologna, Italy*)

Whole-transcriptome Analysis of Fully Viable Energy Efficient Glycolytic-null Cancer Cells Established by Double Genetic Knockout of Lactate Dehydrogenase A/B or Glucose-6-Phosphate Isomerase. E. MAZZIO, R. BADISA, N. MACK, S. CASSIM, M. ZDRALEVIC, J. POUYSSEUR, K.F.A. SOLIMAN (*Tallahassee, FL, USA; Monaco, Monaco; Nice, France*)

TIP60/P400/H4K12ac Plays a Role as a Heterochromatin Back-up Skeleton in Breast Cancer. M. IDRISOU, T. BOISNIER, A. SANCHEZ, F.Z.H. KHOUFAF, F. PENAULT-LORCA, Y.-J. BIGNON, D. BERNARD-GALLON (*Clermont-Ferrand, France*)

STRA6 Expression Serves as a Prognostic Biomarker of Gastric Cancer. S. NAKAMURA, M. KANDA, D. SHIMIZU, K. SAWAKI, C. TANAKA, N. HATTORI, M. HAYASHI, S. YAMADA, G. NAKAYAMA, K. OMAE, M. KOIKE, Y. KODERA (*Nagoya; Fukushima, Japan*)

Expression Patterns of CD44 and AREG Under Treatment With Selective Tyrosine Kinase Inhibitors in HPV+ and HPV- Squamous Cell Carcinoma. B. KANSY, C. ADERHOLD, L. HUBER, S. LUDWIG, R. BIRK, A. LAMMERT, S. LANG, N. ROTTER, B. KRAMER (*Essen; Mannheim; Marburg, Germany*)

Chromobox 2 Expression Predicts Prognosis After Curative Resection of Oesophageal Squamous Cell Carcinoma. S. UEDA, M. KANDA, Y. SATO, H. BABA, S. NAKAMURA, K. SAWAKI, D. SHIMIZU, S. MOTUYAMA, T. FUJII, Y. KODERA, S. NOMOTO (*Nagoya; Akita; Toyama, Japan*)

Fusion of the Lumican (*LUM*) Gene With the Ubiquitin Specific Peptidase 6 (*USP6*) Gene in an Aneurysmal Bone Cyst Carrying a t(12;17)(q21;p13) Chromosome Translocation. I. PANAGOPOULOS, L. GORUNOVA, K. ANDERSEN, I. LOBMAIER, M. LUND-IVERSEN, F. MICCI, S. HEIM (*Oslo, Norway*)

Influence of Concurrent Mutations on Overall Survival in EGFR-mutated Non-small Cell Lung Cancer. M. CHEVALLIER, P. TSANTOULIS, A. ADDEO, A. FRIEDLAENDER (*Geneva, Switzerland*)

Long Noncoding RNA *ANROC* on the *INK4* Locus Functions to Suppress Cell Proliferation. Y. KOTAKE, T. TSURUDA (*Fukuoka, Japan*)

The KDR (VEGFR-2) Genetic Polymorphism Q472H and c-KIT Polymorphism M541L Are Associated With More Aggressive Behaviour in Astrocytic Gliomas. N. ZAMAN, S.S. DASS, P.D. PARCQ, S. MACMAHON, L. GALLAGHER, L. THOMPSON, J.S. KHORASHAD, C. LIMBÄCK-STANIC (*London, UK*)

KIF15 Expression in Tumor-associated Monocytes Is a Prognostic Biomarker in Hepatocellular Carcinoma. A. KITAGAWA, T. MASUDA, J. TAKAHASHI, T. TOBO, M. NODA, Y. KURODA, Q. HU, Y. KOUYAMA, Y. KOBAYASHI, S. KURAMITSU, K. SATO, A. FUJII, Y. YOSHIKAWA, H. WAKIYAMA, D. SHIMIZU, Y. TSURUDA, H. EGUCHI, Y. DOKI, M. MORI, K. MIMORI (*Oita; Osaka; Fukuoka, Japan*)

Transanal Endoscopic Microsurgery (TEMS) for Rectal Cancer: Patient Decision-making, Postoperative Experience and Quality of Life. A. KORELI, G. BRIASSOULIS, M. SIDERIS, A. PHILALITHIS, S. PAPAGRIGORIADIS (<i>Heraklion; Athens, Greece; London, UK</i>).....	1235
Effectiveness of Vintage Hormone Therapy as Alternative Androgen Deprivation Therapy for Non-metastatic Castration-resistant Prostate Cancer. H. IWAMOTO, H. KANO, T. SHIMADA, R. NAITO, T. MAKINO, S. KADAMOTO, H. YAEGASHI, K. SHIGEHARA, K. IZUMI, Y. KADONOA, A. MIZOKAMI (<i>Kanazawa, Japan</i>).....	1247
Efficacy and Safety of Paclitaxel Combined With Cetuximab for Head and Neck Squamous Cell Carcinoma. T. OKADA, I. OKAMOTO, H. SATO, T. ITO, K. MIYAKE, K. TSUKAHARA (<i>Tokyo, Japan</i>).....	1253
Impact of Colon Cancer Location on the Prognostic Significance of Nutritional Indexes and Inflammatory Markers. T. HAYAMA, T. OZAWA, K. ASAKO, R. KONDO, K. ONO, Y. OKADA, M. TSUKAMOTO, Y. FUKUSHIMA, R. SHIMADA, K. NOZAWA, K. MATSUDA, S. FUJII, T. FUKAGAWA, Y. HASHIGUCHI (<i>Tokyo, Japan</i>).....	1261
Daily Triglyceride Output Volume as an Early Predictor for Chyle Leak Following Pancreaticoduodenectomy. T. SAKAMOTO, N. OKUI, F. SUZUKI, R. HAMURA, Y. SHIRAI, K. HARUKI, K. FURUKAWA, T. IKEGAMI (<i>Saku; Tokyo, Japan</i>)	1271
Response to Neoadjuvant Chemotherapy in Locally Advanced Cervical Cancer: The Role of Immune-related Factors. I. PALAIA, F. TOMAO, A. DI PINTO, A. PERNAZZA, G. SANTANGELO, N. D'ALESSANDRIS, L. MANGANARO, A. ARNO, V. DI DONATO, G. PERNIOLA, C. DELLA ROCCA, P.B. PANICI (<i>Rome; Milan, Italy</i>).....	1277
<i>Articles on Covid-19</i>	
The Experience of Greece as a Model to Contain COVID-19 Infection Spread. G.J. DELINASIOS, P.C. FRAGKOU, A.M. GKIRMPA, G. TSANGARIS, R.M. HOFFMAN, A.K. ANAGNOSTOPOULOS (<i>Kapandriti; Athens, Greece; San Diego, CA, USA</i>)	1285
Selection of the Appropriate Control Group Is Essential in Evaluating the Cytokine Storm in COVID-19. A.G. VASSILIOU, I. DIMOPOULOU, E. JAHAJ, C. KESKINIDOU, Z. MASTORA, S.E. ORFANOS, A. KOTANIDOU (<i>Athens, Greece</i>)	1295
Colorectal Cancer Surgery During the COVID-19 Pandemic: A Single Center Experience. D. PERTILE, M. GIPPONI, A. APRILE, P. BATISTOTTI, C.M. FERRARI, A. MASSOBRIO, D. SORIERO, L. EPIS, S. SCABINI (<i>Genoa, Italy</i>).....	1299
The Impact of COVID-19 Infection on the Postoperative Outcomes in Pancreatic Cancer Patients. N. BACALBASA, C. DIACONU, C. SAVU, C. SAVU, O. STIRU, I. BALESU (<i>Bucharest, Romania</i>)	1307

Assessment of Pain, Acceptance of Illness, Adaptation to Life, and Strategies of Coping With the Disease, in Patients With Bladder Cancer. U. RELIGIONI, A. CZERW, A. DEPTALA (<i>Warsaw, Poland</i>).....	1157
Association of the Modified ALBI Grade With Endoscopic Findings of Gastroesophageal Varices. Y. MIYAMOTO, H. ENOMOTO, H. NISHIKAWA, T. NISHIMURA, Y. IWATA, S. NISHIGUCHI, H. IJIMA (<i>Nishinomiya; Hyogo; Osaka, Japan</i>).....	1163
Outcome of Radiation Therapy for Stage IVB Uterine Cervical Cancer With Distant Lymph Nodes Metastases; Sequential Irradiation for Distant Lymph Nodes Metastases. Y. MUKAI, N.R. YOKOTA, M. SUGIURA, T. MIZUSHIMA, R. TANIUCHI, Y. IMAI, K. HASHIMOTO, Y. TABUCHI, E. MIYAGI, M. HATA (<i>Yokohama, Japan</i>).....	1169
Crossed Cerebellar Diaschisis in Alzheimer's Disease Detected by Arterial Spin-labelling Perfusion MRI. A. HERTEL, H. WENZ, M. AL-ZGHLOUL, L. HAUSNER, L. FRÖLICH, C. GRODEN, A. FÖRSTER (<i>Mannheim, Germany</i>)	1177
Progression After Molecular Targeted Agents: Hepatic Arterial Changes and Transarterial Chemoembolization in Hepatocellular Carcinoma. N. MATSUDA, N. IMAI, T. KUZUYA, K. YAMAMOTO, T. ITO, Y. ISHIZU, T. HONDA, M. ISHIGAMI, M. FUJISHIRO (<i>Aichi, Japan</i>).....	1185
Left Hepatectomy Through Double Approach and Total Vascular Exclusion for Giant Left Lobe Hepatocarcinoma. N. BACALBASA, I. BALESCU, S. DIMA, L. ALECU, I. POPESCU (<i>Bucharest, Romania</i>)	1191
Comparison of Central Venous Port Procedures Between Puncture vs. Cut-down and Residents vs. Senior Surgeons. R. OTSUBO, H. YANO, M. MATSUMOTO, A. TANAKA, T. NONAKA, S. HIDAKA, K. MATSUMOTO, T. TSUCHIYA, S. SATO, T. NAGAYASU (<i>Nagasaki, Japan</i>)	1197
Grade 1 Endometrioid Carcinoma With an Area of Serous Carcinoma Less than 5% Is More Aggressive than Stage IA Pure-type Grade 1 Endometrioid Carcinoma. M. MIYAMOTO, H. TSUDA, A. SUGIURA, T. KITA, Y. KATAOKA, K. ISHII, K. KUDO, H. MATSUURA, H. ISHIBASHI, H. IWAHASHI, T. HADA, R. SUZUKI, M. TAKANO (<i>Saitama; Nara; Tokyo, Japan</i>)	1205
Efficacy of Paclitaxel-based Chemotherapy After Progression on Nivolumab for Head and Neck Cancer. Y. SATO, N. FUKUDA, Y. FUJIWARA, X. WANG, T. URASAKI, A. OHMOTO, K. NAKANO, M. ONO, J. TOMOMATSU, H. MITANI, S. TAKAHASHI (<i>Tokyo, Japan</i>)	1211
Incidental Gallbladder Cancer on Cholecystectomy: Strategy for Re-resection of Presumed Benign Diseases from a Retrospective Multicenter Study by the Yokohama Clinical Oncology Group. R. MATSUYAMA, K. MATSUO, R. MORI, M. SUGITA, N. YAMAGUCHI, T. KUBOTA, K. KAMEDA, Y. MOCHIZUKI, R. TAKAGAWA, T. KADOKURA, G. MATSUDA, N. KAMIYA, I. ENDO (<i>Yokohama; Fujisawa; Yokosuka; Ito, Japan</i>)	1217
Risk Factors for Postoperative Liver Enzyme Elevation After Laparoscopic Gastrectomy for Gastric Cancer. A. SANO, K. SAITO, K. KURIYAMA, N. NAKAZAWA, Y. UBUKATA, K. HARA, M. SAKAI, K. OGATA, T. FUKASAWA, M. SOHDA, M. FUKUCHI, H. NAITOH, K. SHIRABE, H. SAEKI (<i>Gunma, Japan</i>)	1227

The Economic Burden of Postoperative Complications Predicted by the Comprehensive Complication Index® in Patients Undergoing Elective Major Hepatopancreaticobiliary Surgery for Malignancy – A Prospective Cost Analysis. D.A. RAPTIS, T. HANNA, N. MACHAIRAS, T. OWEN, D. DAVIES, G.K. FUSAI (<i>London, UK</i>).....	1065
Synovial Alpha-defensin at Reimplantation in Two-stage Revision Arthroplasty to Rule Out Persistent Infection. C. BIELEFELD, H. ENGLER, M. JÄGER, A. WEGNER, D. WASSENAAR, A. BUSCH (<i>Mülheim an der Ruhr; Essen, Germany</i>).....	1073
Prognostic Evaluation of the Site of Invasion in Pathological Stage T3a Renal Cell Carcinoma. G.-S. LAI, J.-R. LI, S.-S. WANG, C.-S. CHEN, C.-K. YANG, S.-C. HUNG, C.-L. CHENG, Y.-C. OU, K.-Y. CHIU (<i>Chiayi; Taichung; Nantou, Taiwan, ROC</i>).....	1083
Prognostic Significance of the Immunological Indices in Patients Who Underwent Complete Resection of Pulmonary Metastases of Colorectal Cancer. Y. OKAZAKI, M. SHIBUTANI, E. WANG, H. NAGAHARA, T. FUKUOKA, Y. ISEKI, S. KASHIWAGI, H. TANAKA, K. MAEDA, K. HIRAKAWA, M. OHIRA (<i>Osaka, Japan</i>).....	1091
Three-month Prostate-specific Antigen Level After Androgen Deprivation Therapy Predicts Survival in Patients With Metastatic Castration-sensitive Prostate Cancer. N. FUJIMOTO, M. SHIOTA, T. MATSUKAWA, A. MINATO, I. TOMISAKI, R. OHNISHI, M. ETO (<i>Kitakyushu; Fukuoka, Japan</i>)	1101
Pelvic Insufficiency Fractures in Cervical Cancer After Radiation Therapy: A Meta-Analysis and Review. Y.K. CHUNG, Y.-K. LEE, B.-H. YOON, D.H. SUH, K.-H. KOO (<i>Goyang; Seongnam; Seoul, Republic of Korea</i>).....	1109
Outcome After Radiation Therapy in Canine Intracranial Meningiomas or Gliomas. T. RODRIGUES MAGALHÃES, J. BENOÎT, S. NÉČOVÁ, S. NORTH, F.L. QUEIROGA (<i>Vila Real; Porto, Portugal; Essex, UK</i>)	1117
Prognostic Significance of Neutrophil-to-Lymphocyte Ratio in Differentiated Thyroid Carcinoma Having Distant Metastasis: A Comparison With Thyroglobulin-doubling Rate and Tumor Volume-doubling Rate. Y. ITO, N. ONODA, M. KIHARA, A. MIYA, A. MIYAUCHI (<i>Kobe, Japan</i>).....	1125
Neutrophil-to-Lymphocyte Ratio After Definitive Concurrent Chemoradiotherapy Predicts Survival in Patients With Esophageal Squamous Cell Carcinoma. H.K. KOH, Y. PARK, T. KOO, H.J. PARK, M.Y. LEE, A.R. CHANG, S. HONG, H. BAE (<i>Seoul; Anyang, Republic of Korea</i>).....	1133
Single Short Retention Instillation of Pirarubicin Prevents Intravesical Recurrence of Low-risk Non Muscle Invasive Bladder Cancer. S. KAGEYAMA, K. MAEDA, S. KUBOTA, T. YOSHIDA, T. OSAFUNE, Y. ARAI, H. SOGA, Z. NISHIKAWA, Y. SAKANO, K. TAKIMOTO, C.J. KIM, T. CHANO, A. KAWAUCHI (<i>Shiga; Kyoto, Japan</i>)	1141
Regimen of 5-Fluorouracil and Cisplatin Increases the Incidence of Extravasation in Patients Undergoing Chemotherapy. H. TAGASHIRA, Y. IZUSHI, T. IKUTA, Y. KOIKE, Y. KITAMURA, H. YAMAMOTO (<i>Okayama; Ehime, Japan</i>).....	1147
Intra-abdominal Desmoid-Type Fibromatosis Mimicking Diverticulitis With Abscess: A Case Report. S. OMORI, S. ITO, K. KIMURA, T. HIGASHI, K. OHGAKI, S. MAEHARA, T. NAKAMURA, T. OHGA, E. ADACHI, Y. IKEDA, Y. MAEHARA (<i>Fukuoka, Japan</i>)	1151

Cytotoxic T-lymphocyte Antigen-4 (CTLA-4) Gene Polymorphism (rs3087243) Is Related to Risk and Survival in Patients With Colorectal Cancer. S.V. NGUYEN, L. SHAMOUN, K. LANDERHOLM, R.E. ANDERSSON, D. WAGSATER, J. DIMBERG (<i>Danang, Vietnam; Jönköping; Uppsala; Linköping, Sweden</i>).....	969
Retrospective Comparison of mFOLFOXIRI With XELOX/SOX as Neoadjuvant Chemotherapy for Locally Advanced Rectal Cancer. H. KODAMA, T. TERAZAWA, Y. ISHIZUKA, H. YUKAMI, M. AOKI, T. MIYAMOTO, T. YAMAGUCHI, F. SHIMAMOTO, T. KII, M. GOTO, H. HAMAMOTO, W. OSUMI, M. YAMAMOTO, K. TANAKA, J. OKUDA, K. UCHIYAMA, K. HIGUCHI (<i>Osaka, Japan</i>).....	977
Risk Factors for Lymph Node Metastasis in Pathological T1b Colorectal Cancer. A. NAITO, K. IWAMOTO, M. OHTSUKA, M. IMASATO, Y. NAKAHARA, M. MIKAMORI, K. FURUKAWA, J. MOON, T. ASAOKA, K. KISHI, H. AKAMATSU (<i>Osaka, Japan</i>)	987
Weak-evidence Fusion Candidates Detected by a FusionPlex Assay Using the Ion Torrent System. S. FUJITA, K. MASAGO, E. SASAKI, S. TSUKUSHI, Y. HORIO, H. KURODA, T. HIDA (<i>Nagoya; Kobe, Japan</i>).....	993
The Controlling Nutritional Status CONUT Score in Patients With Advanced Bladder Cancer After Radical Cystectomy. Y. NEMOTO, T. KONDO, H. ISHIHARA, T. TAKAGI, H. FUKUDA, K. YOSHIDA, J. IIZUKA, H. ISHIDA, K. TANABE (<i>Tokyo, Japan</i>).....	999
An Observational Study on Breast Cancer Survival and Lifestyle Related Risk Factors. A. KREKLAU, I. NEL, S. KASIMIR-BAUER, R. KIMMIG, A.C. FRACKENPOHL, B. AKTAS (<i>Leipzig; Essen, Germany</i>).....	1007
Impact of Smoking on the Survival of Patients With High-risk HPV-positive HNSCC: A Meta-analysis. M. ALOTAIBI, V. VALOVA, T. HÄNSEL, C. STROMBERGER, G. KOFLA, H. OLZE, I. PIWONSKI, A. ALBERS, S. OCHSENREITHER, A. COORDES (<i>Berlin, Germany; Riyadh, Kingdom of Saudi Arabia</i>)	1017
Implications of Preoperative Transbronchial Lung Biopsy for Non-small Cell Lung Cancer Less than 3-cm. M. YASUKAWA, T. KAWAGUCHI, M. KIMURA, T. TOJO, S. TANIGUCHI (<i>Nara; Osaka, Japan</i>).....	1027
The Advantage of Pinpoint Camera System With Indocyanine Green for Sentinel Lymph Node Micrometastasis Detection in Low Risk Endometrial Cancer. A. LAZARIDIS, S. KOGEORGOS, P. BALINAKOS, K. PAVLAKIS, T. GAVRESEA, G. PISTOFIDIS (<i>Athens, Greece; London, UK</i>).....	1033
Neo-Bioscore in Guiding Post-surgical Therapy in Patients With Triple-negative Breast Cancer Who Received Neoadjuvant Chemotherapy. Y. HASEGAWA, N. MATSUBARA, T. KOGAWA, Y. NAITO, K. HARANO, A. HOSONO, T. ONISHI, T. HOJO, M. SHIMOKAWA, T. MUKOHARA (<i>Kashiwa; Ube, Japan</i>).....	1041
Perineural Invasion Correlates With Common Pathological Variables and Clinical Outcomes of Patients With Squamous Cell Carcinoma of the Vulva Treated With Primary Radical Surgery and Inguinal-femoral Lymphadenectomy. A. GADDUCCI, S. PISTOLESI, S. COSIO, C. COMUNALE, A. FANUCCHI, A.G. NACCARATO (<i>Pisa, Italy</i>)	1051
Sorafenib and Lenvatinib Treatment for Metastasis/Recurrence of Radioactive Iodine-refractory Differentiated Thyroid Carcinoma. Y. ITO, N. ONODA, T. KUDO, H. MASUOKA, T. HIGASHIYAMA, M. KIHARA, A. MIYA, A. MIYAUCHI (<i>Kobe, Japan</i>)	1057

Bone Morphogenetic Protein 7 Expression in Alveolar Bone Addition With Autologous Blood, Lyophilized Bone and Atelocollagen. B.-C. ALEXANDRU, M. POPA, L. OANA, C.I. BONDOR, C.RMEN GEORGIU, C.-S. LAZĂR, A.S. ŞOVREA, A.-M. CONSTANTIN, G. DOGARU (<i>Cluj-Napoca, Romania</i>)	871
Vignacyanidin Polyphenols Isolated from Vigna Angularis Bean Promote Osteoblast Differentiation. T. ROJASAWASTHIEN, T. SHIRAKAWA, A. WASHIO, T. TSUJISAWA, T. MATSUBARA, A. INOUE, U. TAKAHAMA, K. NAKASHIMA, S. KOKABU (<i>Kitakyushu, Japan</i>).....	883
<i>Clinical Studies</i>	
Surgery for Peripheral Nerve Sheath Tumours of the Buttocks, Legs and Feet in 90 Patients With Neurofibromatosis Type 1. R.E. FRIEDRICH, C.T. TUZCU (<i>Hamburg, Germany</i>)	889
A Finnish Version of RAND-36-Item Health Survey Versus Structured Interview 8 Years Postoperatively. I. SAIMANEN, V. KUOSMANEN, J. HARJU, T. SELANDER, S. ASPINEN, M. ESKELINEN (<i>Kuopio, Finland</i>).....	907
Laparoscopic Distal Gastrectomy for Synchronous Gastric Cancer and Gastrointestinal Stromal Tumor With Situs Inversus Totalis. T. NAMIKAWA, M. MAEDA, K. YOKOTA, N. TANIOKA, J. IWABU, M. MUNEKAGE, S. UEMURA, H. MAEDA, H. KITAGAWA, Y. NAGATA, M. KOBAYASHI, K. HANAZAKI (<i>Kochi, Japan</i>).....	913
Diagnostic Utility of Oncomine Comprehensive Assay v3 in Differentiating Between Isocitrate Dehydrogenase (IDH)-mutated Grade II-III Astrocytoma and Oligodendroglioma. S.-W. KIM, B.J. PARK, H.-S. KIM, K. NA (<i>Seoul, Republic of Korea</i>).....	921
Prognostic Role of Lung Immune Scores for Prediction of Survival in Limited-stage Small Cell Lung Cancer. L. SCHNÖLLER, L. KÄSMANN, J. TAUGNER, R. ABDO, C. EZE, F. MANAPOV (<i>Munich, Germany</i>).....	929
Risk Factors Associated With Complications After Unilateral Immediate Breast Reconstruction: A French Prospective Multicenter Study. J. DAUPLAT, E. THIVAT, P. ROUANET, E. DELAY, K. CLOUGH, J.-L. VERHAEGHE, I. RAOUST, M. BANNIER, P. LEMASURIER, C. POMEL (<i>Clermont Ferrand; Montpellier; Lyon; Paris; Vandoeuvre-lès-Nancy; Nice; Marseille; Saint Cloud, France</i>)	937
KRAS Mutation in an Implant-associated Peripheral Giant Cell Granuloma of the Jaw: Implications of Genetic Analysis of the Lesion for Treatment Concept and Surveillance. R.E. FRIEDRICH, F. WÜSTHOFF, A.M. LUEBKE, F.K. KOHLRUSCH, I. WIELAND, M. ZENKER, M. GOSAU (<i>Hamburg; Magdeburg, Germany</i>).....	947
An Institutional Audit of Maximum Heart Dose in Patients Treated With Palliative Radiotherapy for Non-small Cell Lung Cancer. C. NIEDER, K.S. IMINGEN (<i>Bodø; Tromsø, Norway</i>).....	955
Multiple Intraosseous Lipomatosis – A Case Report and a Review of the Literature. D. DAMMERER, J. NEUGEBAUER, D. PUTZER, B. HENNINGER (<i>Innsbruck, Austria</i>).....	959
Homozygosity for rs17775810 Minor Allele Associated With Reduced Mortality of COVID-19 in the UK Biobank Cohort. S. LEHRER, P.H. RHEINSTEIN (<i>New York, NY; Severna Park, MD, USA</i>).....	965

Double-layered Nanofibrous Patch for Prevention of Anastomotic Leakage and Peritoneal Adhesions, Experimental Study. J. ROSENDORF, M. KLICOVA, L. CERVENKOVA, R. PALEK, J. HORAKOVA, A. KLAPSTOVA, P. HOSEK, V. MOULISOVA, L. BEDNAR, V. TEGL, O. BRZON, Z. TONAR, V. TRESKA, D. LUKAS, V. LISKA (<i>Prague; Liberec; Pilsen, Czech Republic</i>).....	731
Induction of Immunogenic Cell Death of Esophageal Squamous Cell Carcinoma by 5-Fluorouracil and Cisplatin. J. NISHIMURA, S. DEGUCHI, H. TANAKA, Y. YAMAKOSHI, M. YOSHII, T. TAMURA, T. TOYOKAWA, S. LEE, K. MUGURUMA, M. OHIRA (<i>Osaka, Japan</i>).....	743
Reduced Expression Level of GPX2 in T1 Bladder Cancer and its Role in Early-phase Invasion of Bladder Cancer. A. MINATO, H. NOGUCHI, R. OHNISHI, I. TOMISAKI, T. NAKAYAMA, N. FUJIMOTO (<i>Kitakyushu; Kagoshima, Japan</i>)	753
Drug Screening of Potential Multiple Target Inhibitors for Estrogen Receptor- α -positive Breast Cancer. Y.-H. DAI, G.-Y. CHEN, C.-H. TANG, W.-C. HUANG, J.-C. YANG, Y.-C. WU (<i>Taichung, Taiwan, ROC</i>).....	761
Combination Cancer Therapy of a Del1 Fragment and Cisplatin Enhanced Therapeutic Efficiency <i>In Vivo</i> . H. KITANO, Y. MASAOKA, A. MAMIYA, Y. FUJIWARA, T. MIKI, C. HIDAI (<i>Tokyo, Japan</i>).....	779
Sex-specific Changes in Brain Estrogen Metabolism Induced by Acute Trimethyltin Exposure. J.H. LEE, S.-H. CHO, E.H. JANG, S.A. KIM (<i>Daejeon, Republic of Korea</i>)	793
Significant Association of Chitinase 3-like 1 Genotypes to Asthma Risk in Taiwan. G.-L. CHEN, S.-C. WANG, T.-C. SHEN, W.-S. CHANG, C. LIN, T.-C. HSIA, D.-T. BAU, C.-W. TSAI (<i>Taichung; Taipei, Taiwan, ROC</i>).....	799
Gene Expression Profile of Vascular Endothelial Growth Factors (VEGFs) and Platelet-derived Growth Factors (PDGFs) in the Normal Cornea. A.R. DAN COSNITA, M. RAICA, M.P. SAVA, A.M. CIMPEAN (<i>Timisoara, Romania</i>).....	805
<i>TBX15</i> rs98422, <i>DNM3</i> rs1011731, <i>RAD51B</i> rs8017304, and rs2588809 Gene Polymorphisms and Associations With Pituitary Adenoma. G. JUKNYTĖ, I. LAURINAITYTĖ, A. VILKEVIČIŪTĖ, G. GEDVILAITĖ, B. GLEBAUSKIENĖ, L. KRIAUCIŪNIENĖ, R. LIUTKEVIČIENĖ (<i>Kaunas, Lithuania</i>).....	815
Association of <i>hsa-mir-328-3p</i> Expression in Whole Blood With Optical Density of Retinal Pigment Epithelial Cells. E. KUNCEVICIENE, B. BUDIENE, A. SMALINSKIENE, A. VILKEVICIUTE, R. LIUTKEVICIENE (<i>Kaunas, Lithuania</i>).....	827
Pre-Treatment of Pterostilbene Enhances H ₂ O ₂ -induced Cell Apoptosis Through Caspase-dependent Pathway in Human Keratinocyte Cells. Y.-C. CHENG, P.-Y. CHEN, T.-D. WAY, C.-L. CHENG, Y.-P. HUANG, T.-C. HSIA, Y.-C. CHOU, S.-F. PENG (<i>Taichung; Taipei, Taiwan, ROC</i>)	833
Therapeutic Effects of Tonsil-derived Mesenchymal Stem Cells in an Atopic Dermatitis Mouse Model. H. JUNG, G.M. SON, J.J. LEE, H.S. PARK (<i>Chuncheon, Republic of Korea</i>).....	845
Translational Control of Serrate Expression in <i>Drosophila</i> Cells. G. DELICONSTANTINOS, K. KALODIMOU, C. DELIDAKIS (<i>Heraklion, Greece</i>).....	859