

G.-E. KORROU, G. KYRIAKOS, L.-V. QUILES-SANCHEZ, A. PATSOURAS, D. LAMPRIKOS, A. STELIANIDI, S. SAVVANIS, A. GARMPI (<i>Athens; Peristeri; Piraeus, Greece; Cartagena; Murcia, Spain</i>)	641
Palliative Radiotherapy During the Last Month of Life: Have COVID-19 Recommendations Led to Reduced Utilization? C. NIEDER, E.C. HAUKLAND, B. MANNSAKER, R. YOBUTA (<i>Bodø; Tromsø, Norway</i>)	649
Beneficial Effects of Intermediate Dosage of Anticoagulation Treatment on the Prognosis of Hospitalized COVID-19 Patients: The ETHRA Study. G. POULAKOU, E. DIMAKAKOS, A. KOLLIAS, K.G. KYRIAKOULIS, V. RAPTI, I. TRONTZAS, C. THANOS, M. ABDELRASOUL, T. VANTANA, K. LEONTIS, E. KAKALOU, K. ARGYRAKI, I. BARABOUTIS, E. MICHELAKIS, E. GIAMARELLOS-BOURBOULIS, K. DIMAKOU, G. TSOUKALAS, A. RAPTI, E.D. MICHELAKIS, K.N. SYRIGOS (<i>Athens; Piraeus, Greece; Edmonton, Canada</i>)	653
Quality of Life of Patients With Cancer During the COVID-19 Pandemic. K.-A. BAFFERT, T. DARBAS, V. LEBRUN-LY, J. PESTRE-MUNIER, C. PEYRAMAURE, C. DESCOURS, M. MONDOLY, S. LATROUITE, E. BIGNON, S. NICOULEAU, S. GEYL, S. LEOBON, E. DELUCHE (<i>Limoges, France</i>).....	663

Y. INOKUCHI, N. MACHIDA, M. SHIOZAWA, N. YUKAWA, S. MORINAGA, Y. RINO, M. MASUDA, T. OGATA, T. OSHIMA (<i>Yokohama, Japan</i>)	563
Curative Radiotherapy in Elderly Patients With Muscle Invasive Bladder Cancer: The Prognostic Role of Sarcopenia. G. FERINI, A. CACCIOLA, S. PARISI, S. LILLO, L. MOLINO, C. TAMBURELLA, V. DAVI, I. NAPOLI, A. PLATANIA, N. SETTINERI, G. IATI, A. PONTORIERO, S. PERGOLIZZI, A. SANTACATERINA (<i>Catania; Messina, Italy</i>).....	571
Customized 3D Bolus Applied to the Oral Cavity and Supraclavicular Area for Head and Neck Cancer. S. BAEK, S. AHN, E. JU, N.H. JUNG (<i>Kangwon; Wonju; Sejong, Republic of Korea</i>).....	579
Clinical Spectrum and Outcomes of Neonatal Necrotizing Enterocolitis. P. GAŁĄZKA, M. CHRZANOWSKA, J. STYCZYŃSKI (<i>Bydgoszcz, Poland</i>).....	585
Impact of Fluoropyrimidine and Oxaliplatin-based Chemoradiotherapy in Patients With Locally Advanced Rectal Cancer. Y. OKADA, T. OZAWA, T. HAYAMA, K. OHNO, M. TSUKAMOTO, Y. FUKUSHIMA, R. SHIMADA, K. NOZAWA, K. MATSUDA, Y. HASHIGUCHI (<i>Tokyo, Japan</i>).....	593
Low MLL2 Protein Expression Is Associated With Fibrosis in Early Stage Gastric Cancer. S. NUMAKURA, H. UOZAKI (<i>Tokyo, Japan</i>).....	603
Clinical Outcome of Dermatofibrosarcoma Protuberance. Report From the Bone and Soft Tissue Tumor (BSTT) Registry in Japan. T. NAKAMURA, A. KAWAI, K. ASANUMA, T. HAGI, A. SUDO (<i>Tsu; Tokyo, Japan</i>)	611
A Pilot Study of Allogeneic Hematopoietic Stem Cell Transplantation for Intermediated-risk Acute Myeloid Leukemia Patients. M.J. OH, D.-Y. SHIN, Y. KOH, J. HONG, I. KIM, S.-S. YOON, J.M. BYUN (<i>Seoul, Republic of Korea</i>).....	617
Repetitive Peripheral Magnetic Stimulation (rPMS) in Subjects With Lumbar Radiculopathy: An Electromyography-guided Prospective, Randomized Study. S.E. SAVULESCU, M. BERTEANU, I. FILIPESCU, C. BEIU, M.-M. MIHAI, L.G. POPA, S.I. POPESCU, I. BALESCU, N. BACALBASA, M.-N. POPESCU (<i>Bucharest; Timisoara, Romania</i>).....	623
Pulmonary Mucinous Cystadenoma – A Rare Pathology. C. SAVU, A. MELINTE, A. GIBU, S. VARBAN, C. DIACONU, O. STIRU, I. BALESCU, N. BACALBASA (<i>Bucharest, Romania</i>)	629
<i>Articles on Covid-19</i>	
Breast Cancer Surgery in the COVID-19 Pandemic: Validation of a Preventive Program for Patients and Health Care Workers. P. FREGATTI, M. GIPPONI, M. GIACCHINO, M. SPARAVIGNA, R. DIAZ, E. FIORAVANTI, C. CORNACCHIA, B. CONTE, M. LAMBERTINI, G. ZOPPOLI, F. MURELLI, M.L. TONI, M.T. CALABRO, L. ORSINO, D. FRIEDMAN (<i>Genoa, Italy</i>).....	635
The Impact of Peripheral Eosinophil Counts and Eosinophil to Lymphocyte Ratio (ELR) in the Clinical Course of COVID-19 Patients: A Retrospective Study. V.E. GEORGAKOPOULOU, N. GARMPIS, C. DAMASKOS, S. VALSAMI, D. DIMITROULIS, E. DIAMANTIS, P. FARMAKI, C.V. PAPAGEORGIOU, S. MAKRODIMITRI, N. GRAVVANIS, S. VELONIAS, P. SKLAPANI, N. TRAKAS, E.A. ANTONIOU, K. KONTZOGLU, L. NIKOLIDAKIS, Z. DAMASKOU, A. SYLLAIOS, G. MARINOS, G. VOGIATZI,	

Prognosis of Immune-related Adverse Events in Patients With Advanced Gastric Cancer Treated With Nivolumab or Pembrolizumab: A Multicenter Retrospective Analysis. T. ANDO, A. UEDA, K. OGAWA, I. MOTOO, S. KAJIURA, T. NAKAJIMA, K. HIRANO, T. OKUMURA, K. TSUKADA, T. HARA, N. SUZUKI, N. NAKADA, N. HORIKAWA, T. FUJII, I. YASUDA (<i>Toyama; Takaoka; Joetsu; Itoigawa, Japan</i>).....	475
Palliative Radiotherapy of Primary Glioblastoma. J. WITTELER, S.E. SCHILD, D. RADES (<i>Lübeck, Germany; Scottsdale, AZ, USA</i>)	483
Tensor Regression-based Model to Investigate Heterogeneous Spatial Radiosensitivity After I-125 Seed Implantation for Prostate Cancer. K. KOBAYASHI, N. MURAKAMI, K. TAKAHASHI, K. INABA, H. IGAKI, R. HAMAMOTO, J. ITAMI (<i>Tokyo, Japan</i>).....	489
ATM Expression as a Prognostic Marker in Patients With Advanced Biliary Tract Cancer Treated With First-line Gemcitabine and Platinum Chemotherapy. H. KIM, S.T. KIM, K.H. YOO, J.Y. HONG, Y.S. PARK, H.Y. LIM, J.O. PARK (<i>Seoul; Daegu; Incheon, Republic of Korea</i>).....	499
A Prognostic Score for Predicting Survival in Patients With Pancreatic Head Adenocarcinoma and Distal Cholangiocarcinoma. E.M. MUTTILLO, A. CIARDI, P. SAULLO, R. TROIANO, G. MASSELLI, M. GUIDA, A. TORTORA, I. SPERDUTI, G. MARINELLO, P. CHIRLETTI, R. CARONNA (<i>Rome, Italy</i>)	507
Management of Concomitant Abdominal Aortic Aneurysm and Intra-abdominal, Retroperitoneal Malignancy. V. TRESKA, J. MOLACEK, B. CERTIK, K. HOUDEK, P. HOSEK, V. SOUKUPOVA, C. STOGEROVA, A. SVEJDOVA (<i>Prague; Pilsen, Czech Republic</i>)	517
Impact of Lymphovascular Invasion in Patients With Stage II Colorectal Cancer: A Propensity Score-matched Study. M. KATAOKA, Y. HIRANO, T. ISHII, H. KONDO, M. ASARI, S. ISHIKAWA, A. KATAOKA, T. FUJII, S. SHIMAMURA, S. YAMAGUCHI (<i>Saitama, Japan</i>)	525
Pathological Examination of the Late Embryonic Heart Using the Same 4-chamber and 3-vessel Planes Used in Fetal Echocardiography. C.G. HERGHELEGIU, A. NEACȘU, R. CHIRCURESCU, D. HERGHELEGIU, S.C. VOINEA, C. DIACONU, O. STIRU, C. SAVU, A. FILIPESCU, I. BALESU, N. BACALBASA, N. SUCIU (<i>Bucharest, Romania</i>).....	533
Identification of Salivary Proteomic Biomarkers for Oral Cancer Screening. S. ISHIKAWA, K. ISHIZAWA, A. TANAKA, H. KIMURA, K. KITABATAKE, A. SUGANO, K. EDAMATSU, S. UEDA, M. IINO (<i>Yamagata; Fukushima, Japan</i>).....	541
Preoperative Octenidine Application in Breast Reconstruction Surgery. J. HACHENBERG, E. ACIS, M.M. AUER-SCHMIDT, M. WARM, W. MALTER, F. THANGARAJAH, C. EICHLER (<i>Hannover; Cologne, Germany</i>).....	549
Postoperative Complications Predict Long-term Outcome After Curative Resection for Perforated Colorectal Cancer. S. HASHIMOTO, K. HAMADA, Y. SUMIDA, M. ARAKI, K. WAKATA, T. KUGIYAMA, A. SHIBUYA, M. NISHIMUTA, S. MORINO, M. BABA, S. KIYA, K. OZEKI, A. NAKAMURA (<i>Sasebo, Japan</i>)	555
Effect of Prognostic Nutrition Index in Gastric or Gastro-oesophageal Junction Cancer Patients Undergoing Nivolumab Monotherapy. H. WATANABE, T. YAMADA, K. KOMORI, K. HARA, K. KANO, K. TAKAHASHI, Y. KUMAZU, H. FUJIKAWA, M. NUMATA, T. AOYAMA, H. TAMAGAWA,	

Adolescents and Young Adults (AYAs) With Initially Localized and Metastatic Bone Sarcomas: A Retrospective Single Center Analysis of Side Effect Management. C. MINICHSDORFER, O. STEINBRECHER, M. KÖLZ, M. SCHMID, M. RADERER, T. BRODOWICZ, W. LAMM (Vienna, Austria)	385
The Epidemiology, Staging and Outcomes of Sarcomatoid Hepatocellular Carcinoma: A SEER Population Analysis. D. GIANNIS, S. MORSY, G. GEROPOULOS, S.M. ESAGIAN, G.S. SIOUTAS, D. MORIS (Larissa, Greece; Tanta, Egypt; London, UK; Durham, NC, USA)	393
Sarcopenia may Influence the Prognosis in Advanced Thyroid Cancer Patients Treated With Molecular Targeted Therapy. A. NISHIYAMA, Y. STAUB, Y. SUGA, M. FUJITA, A. TANIMOTO, K. OHTSUBO, S. YANO (Kanazawa, Japan)	401
Comparison of Conventional Fractionation and Accelerated Fractionation With Concomitant Boost for Radiotherapy of Non-metastatic Stage IV Head-and-Neck Cancer. C. NARVAEZ, S.E. SCHILD, D. RADES (Lübeck, Germany; Scottsdale, AZ, USA)	411
Prognostic Factors After Surgical Treatment of Liver Metastases from Breast Cancer – 19 Years of Experience. K. PROCHÁZKOVÁ, K. PIVOVARČÍNKOVÁ, M. ROUŠAROVÁ, J. VODIČKA, P. HOŠEK, I. TŘEŠKOVÁ, O. HES, R. KUČERA, O. TOPOLČAN, V. TŘEŠKA (Pilsen, Czech Republic).....	417
A Comparative Study of Pigmented and Non-pigmented Basal Cell Carcinoma in Reflectance Confocal Microscopy. A. POGORZELSKA-ANTKOWIAK, S. GRZEGORCZYN, P. CORNELI, J.C. SZEPIETOWSKI (Tychy; Zabrze; Wrocław, Poland; Trieste, Italy)	423
Evaluation of Sodium (²³ Na) MR-imaging as a Biomarker and Predictor for Neurodegenerative Changes in Patients With Alzheimer’s Disease. S.A. MOHAMED, K. HERRMANN, A. ADLUNG, N. PASCHKE, L. HAUSNER, L. FRÖLICH, L. SCHAD, C. GRODEN, H.U. KERL (Mannheim, Germany)	429
CD133 Expression Predicts Relapse in Patients With Locally Advanced Rectal Cancer Treated With Neoadjuvant Chemotherapy. H. OI, T. OKUYAMA, S. MIYAZAKI, Y. ONO, M. OYA (Saitama, Japan)	437
Dosimetric Comparison Between Carbon-ion Radiotherapy and Photon Radiotherapy for Stage I Esophageal Cancer. Y. TAKAKUSAGI, D. YOSHIDA, Y. KUSANO, K. KANO, W. ANNO, K. TSUCHIDA, N. MIZOGUCHI, I. SERIZAWA, H. KATOH, K. IMURA, Y. TAKAYAMA, S. MINOHARA, T. KAMADA (Yokohama, Japan).....	447
Micropapillary Bladder Cancer Metastatic to the Breast: A Case Report and Brief Literature Review. E. LIEVORE, L. RUNZA, M. GHIDINI, B. GALASSI, A. GALLIOLI, C. BEBI, L. BOERI, C. BLUNDO, C.F. ROSSI, F. LONGO, G. ALBO, E. MONTANARI, E. DE LORENZIS (Milan, Italy)	453
Radiation to the Primary Tumor in Metastatic Anaplastic Thyroid Cancer. T. AUGUSTIN, D. OLIINYK, J. RAUCH, V.F. KOEHLER, C. SPITZWEG, C. BELKA, L. KÄSMANN (Munich, Germany)	461
Coexistence of Emphysema With Non-small-cell Lung Cancer Predicts the Therapeutic Efficacy of Immune Checkpoint Inhibitors. Y. TAKAYAMA, T. NAKAMURA, Y. FUKUSHIRO, S. MISHIMA, K. MASUDA, H. SHODA (Hiroshima; Hatsukaichi, Japan)	467

Deformation of the Pelvic Arteries Caused by Pneumoperitoneum and Postural Changes in an Animal Model. H. KIYOMATSU, L. MA, J. WANG, T. KIYOMATSU, H. TSUKIHARA, E. KOBAYASHI, I. SAKUMA, S. ISHIHARA (<i>Tokyo, Japan; Beijing, PR China</i>)	275
Effects of Different Media on Human T Regulatory Cells Phenotype. M. GŁACZYNSKA, M. MACHCINSKA, K. DONSKOW-LYSONIEWSKA (<i>Warsaw, Poland</i>).....	283
Relationship Between Insulin-Receptor Substrate 1 and Langerhans' Islet in a Rat Model of Type 2 Diabetes Mellitus. W.L. ATMODOJO, Y.O. LARASATI, J. JO, R. NUFIKA, S. NAOMI, I. WINOTO (<i>Tangerang; Jakarta, Indonesia</i>).....	291
High MCM6 Expression as a Potential Prognostic Marker in Clear-cell Renal Cell Carcinoma. N.-R. JANG, J. BAEK, Y. KO, P.H. SONG, M.-J. GU (<i>Gyeongsan, Republic of Korea</i>).....	299
IGF-1 Protects Neurons in the Cortex and Subventricular Zone in a Periventricular Leucomalacia Model. D.-J. KIM, S.-Y. CHO, S.-U. KIM, D.-W. JO, H.-I. HWANG, H.-K. SHIN, Y.-H. JUN (<i>Gwangju, Republic of Korea</i>).....	307
Enamel Matrix Derivative in Diffusion Chamber Implanted Subcutaneously in Rat Induces Formation of Fibrous Connective Tissue Containing Abundant Blood Vessels. S. YOKOSE, Y. KATO, K. MATSUMOTO, P. R. KLOKKEVOLD, H.H. TAKEI, H. KAWAZU, H. SAKAGAMI (<i>Saitama, Japan; Los Angeles, CA, USA</i>).....	313
MicroRNA Deregulation in Papillary Thyroid Cancer and its Relationship With BRAF V600E Mutation. P. CELAKOVSKY, H. KOVARIKOVA, V. CHROBOK, J. MEJZLIK, J. LACO, H. VOSMIKOVA, M. CHMELAROVA, A. RYSKA (<i>Kralovi, Czech Republic</i>).....	319
Culture Separation, Identification and Unique Anti-pathogenic Fungi Capacity of Endophytic Fungi from Gucheng <i>Salvia Miltiorrhiza</i> . G.-K. WANG, J.-S. YANG, Y.-F. HUANG, J.-S. LIU, C.-W. TSAI, D.-T. BAU, W.-S. CHANG (<i>Hefei, PR China; Taichung, Taiwan, ROC</i>)	325
Expression of Syndecan-1 in Chronic Liver Diseases: Correlation With Hepatic Fibrosis. A. CHARCHANTI, P. KANAVAROS, E. KONIARIS, A. KATAKI, G. GLANTZOUNIS, N.J. AGNANTIS, A.C. GOUSSIA (<i>Ioannina; Athens, Greece</i>).....	333
Metabolic-targeted Combination Therapy With Dichloroacetate and Metformin Suppresses Glioblastoma Cell Line Growth <i>In Vitro</i> and <i>In Vivo</i> . L. KORSKOVA, J.A. KRASKO, E. STANKEVICIUS (<i>Kaunas; Vilnius, Lithuania</i>)	341
<i>Clinical Studies</i>	
Sphenoid Bone Pneumatisation on Lateral Cephalograms of Patients With Neurofibromatosis Type 1. R.E. FRIEDRICH, H.T. SCHEUER, J.F. KERSTEN, H.A. SCHEUER (<i>Hamburg, Germany</i>)	349
Predictors for Grip Strength Loss in Patients With Chronic Liver Diseases. H. NISHIKAWA, K. YOH, H. ENOMOTO, N. IKEDA, T. TAKASHIMA, N. AIZAWA, T. NISHIMURA, S. NISHIGUCHI, H. IJIMA (<i>Nishinomiya; Osaka, Japan</i>)	363
Prognostic Factors in Hormone-sensitive Prostate Cancer Patients Treated With Combined Androgen Blockade: A Consecutive 15-year Study at a Single Japanese Institute. Y. MIYAZAWA, Y. SEKINE, S. ARAI, D. OKA, H. NAKAYAMA, T. SYUTO, M. NOMURA, H. KOIKE, H. MATSUI, Y. SHIBATA, K. SUZUKI (<i>Gunma, Japan</i>)	373

Correlation Between Onco-suppressors PTEN and NM23 and Clinical Outcome in Patients With T1 Breast Cancer. L. IZZO, D. MESSINEO, P. DI CELLO, V. NICOLANTI, A. STERPETTI, S. IZZO, P. IZZO (Rome; Frosinone; Naples, Italy).....	169
Effects of GGsTop® on Collagen and Glutathione in the Oral Mucosa Using a Rat Model of 5-Fluorouracil-Induced Oral Mucositis. I. TAKEUCHI, R. KAWAMATA, K. MAKINO (Chiba, Japan).....	175
Mitochondrial DNA Methylation Is Higher in Acute Coronary Syndrome Than in Stable Coronary Artery Disease. S.H. PARK, S.Y. LEE, S.A. KIM (Daejeon, Republic of Korea)	181
ELF3 Overexpression as Prognostic Biomarker for Recurrence of Stage II Colorectal Cancer. A. TAKAOKA, T. ISHIKAWA, S. OKAZAKI, S. WATANABE, F. MIYA, T. TSUNODA, A. KIKUCHI, S. YAMAUCHI, T. MATSUYAMA, M. TOKUNAGA, H. UETAKE, Y. KINUGASA (Tokyo; Yokohama, Japan).....	191
MYC Up-regulation Is a Useful Biomarker for Preoperative Neoadjuvant Chemotherapy Combined With Anti-EGFR in Liver Metastasis from Colorectal Cancer. T. KATO, N. MATSUHASHI, H. TOMITA, T. TAKAHASHI, Y. IWATA, M. FUKADA, I. YASUFUKU, T. SUETSUGU, T. IMAI, R. MORI, H. IMAI, Y. TANAKA, N. OKUMURA, A. HARA, K. YOSHIDA (Gifu, Japan).....	203
Anti-metastatic Effects of Cationic KT2 Peptide (a Lysine/Tryptophan-rich Peptide) on Human Melanoma A375.S2 Cells. P. MARAMING, S. KLAYNONGSRUANG, P. BOONSIRI, S.-F. PENG, S. DADUANG, P. RUNGSA, R. TAVICHAKORNTRAKOOL, J.-G. CHUNG, J. DADUANG (Khon Kaen, Thailand; Taichung, Taiwan, ROC)	215
Sulfite Oxidase Is a Novel Prognostic Biomarker of Advanced Gastric Cancer. Y. YANO, J. AKIBA, Y. NAITO, E. SADASHIMA, H. CHO, T. HISHIMA, H. YANO (Fukuoka; Saga; Tokyo, Japan)	229
Tumor Growth Suppression With Novel Intra-arterial Chemotherapy Using Epirubicin-entrapped Water-in-oil-in-water Emulsion <i>In Vivo</i> . H. YANAGIE, T. FUJINO, M. YANAGAWA, T. TERAO, T. IMAGAWA, M. FUJIHARA, Y. MORISHITA, R. MIZUMACHI, Y. MURATA, N. DEWI, Y. ONO, I. IKUSHIMA, K. SEGUCHI, M. NAGATA, Y. NONAKA, Y. FURUYA, T. HISA, T. NAGASAKI, K. ARIMORI, T. NAKASHIMA, T. SUGIHARA, K. KAKIMI, M. ONO, J. NAKAJIMA, M. ERIGUCHI, S. HIGASHI, H. TAKAHASHI (Tokyo; Niigata; Hidaka; Hokkaido; Tokushima; Hyogo; Miyazaki; Kumamoto; Iwate; Chiba; Osaka, Japan)	239
Curcumin Activates ROS Signaling to Promote Pyroptosis in Hepatocellular Carcinoma HepG2 Cells. W.-F. LIANG, Y.-X. GONG, H.-F. LI, F.-L. SUN, W.-L. LI, D.-Q. CHEN, D.-P. XIE, C.-X. REN, X.-Y. GUO, Z.-Y. WANG, T. KWON, H.-N. SUN (Yanji; Daqing, PR China; Jeonbuk, Republic of Korea)	249
Changes in the Mineral Composition of Rat Tissues Induced by Breast Cancer and Dietary Supplementation. D. SKRAJNOWSKA, A. TOKARZ, J. MAKOWSKA, B. BOBROWSKA-KORCZAK (Warsaw, Poland)	259
Aberrant GLUT1 Expression Is Associated With Carcinogenesis and Progression of Liver Fluke-associated Cholangiocarcinoma. U. THAMRONGWARANGGOON, S. SANGKHAMANON, W. SEUBWAI, P. SARANARUK, U. CHA'ON, S. WONGKHAM (Khon Kaen, Thailand)	267

An Update on Clinicopathological, Imaging and Genetic Features of Desmoplastic Fibroblastoma (Collagenous Fibroma). S. NAKAYAMA, J. NISHIO, M. AOKI, K. NABESHIMA, T. YAMAMOTO (Fukuoka, Japan).....	69
Contemporary Molecular Classification of Urinary Bladder Cancer. D. GOUTAS, A. TZORTZIS, H. GAKIOPOULOU, D. VLACHODIMITROPOULOS, I. GIANNOPOULOU, A.C. LAZARIS (Athens, Greece)	75
Inflammatory Fibroid Polyp of the Gastrointestinal Tract: A Systematic Review for a Benign Tumor. N. GARMPI, C. DAMASKOS, A. GARMPI, V.E. GEORGAKOPOULOU, S. SAKELLARIOU, A. LIAKEA, D. SCHIZAS, E. DIAMANTIS, P. FARMAKI, E. VOUTYRITSA, A. SYLLAIOS, A. PATSOURAS, G. SYPSA, A. AGOROGIANNI, A. STELIANIDI, E.A. ANTONIOU, K. KONTZOGLU, N. TRAKAS, D. DIMITROULIS (Athens; Piraeus, Greece; Cambridge, UK)	81
The Angiotensin-converting Enzyme Insertion/Deletion Polymorphism as a Common Risk Factor for Major Pregnancy Complications. I. GINTONI, M. ADAMOPOULOU, C. YAPIJAKIS (Athens, Greece).....	95
<i>Experimental Studies</i>	
A Novel Procedure for Orthotopic Tibia Implantation for Establishment of a More Clinical Osteosarcoma PDOX Mouse Model. N.F. WU, J. YAMAMOTO, M. BOUVET, R.M. HOFFMAN (San Diego, CA; Cambridge, MA, USA).....	105
<i>In Vivo</i> Evaluation of Combined CK2 Inhibition and Irradiation in Human WiDr Tumours. F. ZWICKER, H. HAUSWALD, K.-J. WEBER, J. DEBUS, P.E. HUBER (Heidelberg, Germany).....	111
Inhibition of Colony-Stimulating Factor-1 Receptor Enhances the Efficacy of Radiotherapy and Reduces Immune Suppression in Glioblastoma. M.F. ALMAHARIQ, T.J. QUINN, P. KESARWANI, S. KANT, C.R. MILLER, P. CHINNAIYAN (Royal Oak; Rochester, MI; Birmingham, AL, USA)	119
Low DUSP4 Expression Is Associated With Aggressive Phenotypes and Poor Prognosis in Gastric Cancer. S. BANG, S. JEE, H. KIM, K. JANG, H. PARK, J.K. MYUNG, D. CHOI, S.-J. SHIN, S.S. PAIK (Seoul, Republic of Korea)	131
Combining Nelfinavir With Chloroquine Inhibits <i>In Vivo</i> Growth of Human Lung Cancer Xenograft Tumors. J. LOPICCOLO, S. KAWABATA, J.J. GILLS, P.A. DENNIS (Bethesda, MD; Baltimore, MD, USA).....	141
PolyIC Induces Retinoic Acid-inducible Gene-I and Melanoma Differentiation-associated Gene 5 and Modulates Inflammation in Podocytes. M. NAKATA, M. SHIMADA, I. NARITA-KINJO, D. NAGAWA, K. KITAYAMA, M. HAMADATE, N. MIURA, M. NOZAKA, Y. KAWAMURA, T. FUJITA, R. MURAKAMI, T. IMAIZUMI, N. NAKAMURA, H. TOMITA (Hirosaki, Japan).....	147
Protective Effects of Baicalin on Arsenic Trioxide-induced Oxidative Damage and Apoptosis in Human Umbilical Vein Endothelial Cells. C.-L. TSAI, C.-W. TSAI, W.-S. CHANG, J.-C. LIN, T.-C. HSIA, D.-T. BAU (Taichung; Chiayi, Taiwan, ROC).....	155
NR6A1 Allelic Frequencies as an Index for both Miniaturizing and Increasing Pig Body Size. M. IJIRI, Y.-C. LAI, H. KAWAGUCHI, Y. FUJIMOTO, N. MIURA, T. MATSUO, A. TANIMOTO (Kagoshima; Yamaguchi, Japan).....	163

ANTICANCER RESEARCH

International Journal of Cancer Research and Treatment

ISSN: 0250-7005

Contents

Review

Current Treatment of Colorectal Liver Metastasis as a Chronic Disease. N.M. DÖRR, M. BARTELS, M.H. MORGUL. (Leipzig; Münster, Germany)..... 1

Experimental Studies

SAHA and ECGG Promote Apoptosis in Triple-negative Breast Cancer Cells, Possibly Through the Modulation of cIAP2. K.L. STEED, H.R. JORDAN, T.O. TOLLEFSBOL. (Birmingham, AL, USA)..... 9

Genetic Polymorphisms in IL-10 Promoter Are Associated With Smoking and Prostate Cancer Risk in African Americans. M. ABBAS, T. MASON, A. IBAD, M. KHRAJESH, V. APPREY, Y. KANAAN, B. WILSON, G. DUNSTON, L. RICKS-SANTI, H. BRIM. (Washington, DC; Silver Spring, MD; Hampton, VA, USA)..... 27

High Expression of *c-Met*, *PKC ζ* and *ALDH1A3* Predicts a Poor Prognosis in Late-stage Breast Cancer. H. MOTOMURA, Y. NOZAKI, C. ONAGA, A. OZAKI, S. TAMORI, T.-A. SHINA, S. KANAI, C. OHIRA, Y. HARA, Y. HARADA, R. TAKASAWA, T. HANAWA, S.-I. TANUMA, Y. MANO, T. SATO, K. SATO, K. AKIMOTO. (Chiba, Japan)..... 35

Targeting Fibroblast Growth Factor Receptor (FGFR) and Phosphoinositide 3-kinase (PI3K) Signaling Pathways in Mesothelioma Cell Lines. S. HÖLZHAUSER, M. LEIKOŠVIČIUTE, T. ANDONOVA, R.G. URSU, T. DALIANIS, M. WICKSTRÖM, O.N. KOSTOPOULOU. (Stockholm, Sweden; Iasi, Romania)..... 53

Cisplatin Induced the Expression of *SEI1* (*TBP1-Br1*) Oncogene in Human Oral Squamous Cancer Cell Lines. J. LI, Z. VANGUNDY, M. POI. (Columbus, OH, USA)..... 67

Contents continued on the back cover

ISSN (online): 1791-7530 / ISSN (print): 0250-7005

General Policy

- **ANTICANCER RESEARCH** is an independent international forum devoted to the rapid publication of original high quality articles and reviews on all aspects of experimental and clinical oncology. Prompt evaluation of all submitted articles in confidence and rapid publication within 1-2 months from acceptance are guaranteed.
- **ANTICANCER RESEARCH** is published monthly by the International Institute of Anticancer Research and is available online with Stanford University HighWire Press.
- **Editorial Office:** International Institute of Anticancer Research, 1st km Kapandritiou-Kalamou Rd., P.O. Box 22, Kapandriti, Attiki 19014, Greece. Tel: +30 22950 52945, Fax: +30 22950 53389.
- **U.S. Branch:** Anticancer Research Inc., USA, 111 Bay Avenue, Highlands, NJ, USA.
- **E-mail:** journals@iiar-anticancer.org; IAR WEBSITES: www.iiar-anticancer.org and www.iiarjournals.org

● Selection of Recent Articles

The Development of Next-generation PBMC Humanized Mice for Preclinical Investigation of Cancer Immunotherapeutic Agents. Y.M. MORILLON II, A. SABZEVARI, J. SCHLOM, J.W. GREINER (Bethesda, MD, USA)

Human NK-92 Cells Function as Target Cells for Human NK Cells – Implications for CAR NK-92 Therapies. H. BERGMAN, N. SISSALA, H. HÄGERSTRAND, C. LINDQVIST (Turku, Finland)

Activation of Toll-Like Receptor 2 Promotes Proliferation of Human Lung Adenocarcinoma Cells. A.K. GERGEN, P.D. KOHTZ, A.L. HALPERN, A. LI, X. MENG, T.B. REECE, D.A. FULLERTON, M.J. WEYANT (Aurora, CO, USA)

A Gemcitabine Plus 5-Fluorouracil Combination Inhibits Gastric-Cancer Liver Metastasis in a PDOX Model: A Novel Treatment Strategy. N. SUGISAWA, H. NISHINO, T. HIGUCHI, J.H. PARK, J. YAMAMOTO, Y. TASHIRO, K. KAWAGUCHI, M. BOUVET, M. UNNO, R.M. HOFFMAN (San Diego, CA, USA; Sendai, Japan)

Expression of ATP-binding Cassette Transporter 11 (ABCC11) Protein in Colon Cancer. Y. YAMADA, K. YOSHIMATSU, H. YOKOMIZO, S. OKAYAMA, S. SHIOZAWA (Tokyo, Japan)

Genomic Database Analysis for Head and Neck Cancer Prevention Targets: MTOR Signal Transduction Pathway. C. KOENIGSBERG, F.G. ONDREY (Minneapolis, MN, USA)

Presence of the Transmembrane Protein Neuropilin in Cytokine-induced Killer Cells. E.V. DÍEZ GARCÍA DE OLALLA, F. GAROFANO, H. WEIHER, M. MUDERS, S. FÖRSTER, I.G.H. SCHMIDT-WOLF (Bonn; Rheinbach, Germany)

Association of Caspase-8 Genotypes With the Risk for Nasopharyngeal Carcinoma in Taiwan. L.-C. SHIH, C.-W. TSAI, W.-S. CHANG, T.-C. SHEN, Y.-C. WANG, J.-S. YANG, M.-L. LIN, Z.-H. WANG, D.-T. BAU (Taichung, Taiwan, ROC)

Mogamulizumab Plus EPOCH Therapy for Patients With Newly Diagnosed Aggressive Adult T-cell Leukemia/lymphoma. T. JO, K. MATSUZAKA, H. SHIOYA, H. TOMINAGA, T. SAKAI, Y. KANEKO, S. HAYASHI, M. MATSUO, J. TAGUCHI, K. ABE, K. SHIGEMATSU, R. KUBOTA-KOKETSU (Nagasaki; Osaka, Japan)

WNT Signaling Driven by R-spondin 1 and LGR6 in High-grade Serous Ovarian Cancer. S. LEE, J. JUN, W.J. KIM, P. TAMAYO, S.B. HOWELL (Seoul, Republic of Korea; San Diego, CA, USA)

Characterization of a Novel Barbituric Acid and Two Thiobarbituric Acid Compounds for Lung Cancer Treatment. S.Y. LEE, B. SLAGLE-WEBB, A.K. SHARMA, J.R. CONNOR (Hershey, PA, USA)

An Autocrine Role for CXCL1 in Progression of Hepatocellular Carcinoma. K.J.V. DAHLQUIST, L.C. VOTH, A.J. FEE, A.K. STOECKMAN (Saint Paul, MN, USA)

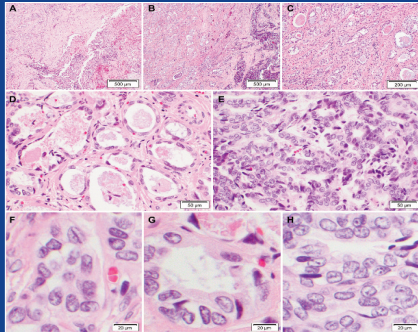
Apoptosis-related Proteins Are Altered by Selective Tyrosine Kinase Inhibitors and Everolimus in HPV-dependent SCC. R. BIRK, A. SCHELL, C. ADERHOLD, S. HOCH, L. HUBER, C.E. MUELLER, A. LAMMERT, C. SCHERL, N. ROTTER, J.U. SOMMER, B. KRAMER (Marburg; Mannheim; Wuppertal, Germany)

Targeting Membrane HDM-2 by PNC-27 Induces Necrosis in Leukemia Cells But Not in Normal Hematopoietic Cells. A. THADI, L. LEWIS, E. GOLDSTEIN, A. AGGARWAL, M. KHALILI, L. STEELE, B. POLYAK, S. SEYDAFKAN, M.H. BLUTH, K.A. WARD, M. STYLER, P.M. CAMPBELL, M.R. PINCUS, W.B. BOWNE (Philadelphia, PA; Brooklyn, NY; Detroit, MI, USA)

Phase I Study of LFA102 in Patients With Advanced Breast Cancer or Castration-resistant Prostate Cancer. H. MINAMI, Y. ANDO, K. TAMURA, T. TAJIMA, R. ISAACS (Kobe; Nagoya; Tokyo, Japan; East Hanover, NJ, USA)

CANCER GENOMICS & PROTEOMICS

ISSN (online): 1790-6245



Published by the International Institute of Anticancer Research

Online ISSN: 1790-6245

General Policy

- **CANCER GENOMICS & PROTEOMICS (CGP)** welcomes submissions of original high quality articles and reviews on all aspects of the application of genomic and proteomic technologies to experimental and clinical cancer research. The journal's scientific spectrum includes: (a) molecular causes of carcinogenesis, cancer progression and metastasis; (b) structural and functional aspects of genes in the cancer cell; (c) advances in genomic and proteomic technologies applicable to cancer research; (d) anticancer drug design and drug development. A main aim of CGP is to ensure the prompt and confidential review, and rapid publication of original works and reviews, generally within 1-3 months from submission.
- CGP is published bimonthly by the **International Institute of Anticancer Research (IIAR)** and is available online only and open access with **Stanford University HighWire Press**. For more information please visit our website www.cgip.iiarjournals.org.
- **Editorial Office:** International Institute of Anticancer Research, 1st km Kapandritiou-Kalamou Rd., P.O. Box 22, Kapandriti, Attiki 19014, Greece. Tel: +30 22950 52945, Fax: +30 22950 53389.
- **U.S. Branch:** Anticancer Research Inc., USA, 111 Bay Avenue, Highlands, NJ, USA.
- **E-mail:** journals@iiar-anticancer.org; IIAR WEBSITES: www.iiar-anticancer.org and www.iiarjournals.org

● Selection of Recent Articles

Micro RNAs Promoting Growth and Metastasis in Preclinical *In Vivo* Models of Subcutaneous Melanoma. U.H. WEIDLE, S. AUSLÄNDER, U. BRINKMANN (*Penzberg, Germany*)

Differential Proteomic Analysis of Hepatocellular Carcinomas from *Ppp2r5d* Knockout Mice and Normal (Knockout) Livers. C. LAMBRECHT, G.B. FERREIRA, J.D. OMELLA, L. LIBBRECHT, R. DE VOS, R. DERUA, C. MATHIEU, L. OVERBERGH, E. WAELEKENS, V. JANSSENS (*Leuven; Brussels, Belgium*)

Stem-like Cells from Invasive Breast Carcinoma Cell Line MDA-MB-231 Express a Distinct Set of Eph Receptors and Ephrin Ligands. M. LUCERO, J. THIND, J. SANDOVAL, S. SENAATI, B. JIMENEZ, R.P. KANDPAL (*Pomona, CA, USA*)

Circulating Tumor DNA in Biliary Tract Cancer: Current Evidence and Future Perspectives. A. RIZZO, A.D. RICCI, S. TAVOLARI, G. BRANDI (*Bologna, Italy*)

Whole-transcriptome Analysis of Fully Viable Energy Efficient Glycolytic-null Cancer Cells Established by Double Genetic Knockout of Lactate Dehydrogenase A/B or Glucose-6-Phosphate Isomerase. E. MAZZIO, R. BADISA, N. MACK, S. CASSIM, M. ZDRALEVIC, J. POUYSSEGUR, K.F.A. SOLIMAN (*Tallahassee, FL, USA; Monaco, Monaco; Nice, France*)

TIP60/P400/H4K12ac Plays a Role as a Heterochromatin Back-up Skeleton in Breast Cancer. M. IDRISOU, T. BOISNIER, A. SANCHEZ, F.Z.H. KHOUFAF, F. PENAULT-LLORCA, Y.-J. BIGNON, D. BERNARD-GALLON (*Clermont-Ferrand, France*)

STRA6 Expression Serves as a Prognostic Biomarker of Gastric Cancer. S. NAKAMURA, M. KANDA, D. SHIMIZU, K. SAWAKI, C. TANAKA, N. HATTORI, M. HAYASHI, S. YAMADA, G. NAKAYAMA, K. OMAE, M. KOIKE, Y. KODERA (*Nagoya; Fukushima, Japan*)

Expression Patterns of CD44 and AREG Under Treatment With Selective Tyrosine Kinase Inhibitors in HPV+ and HPV- Squamous Cell Carcinoma. B. KANSY, C. ADERHOLD, L. HUBER, S. LUDWIG, R. BIRK, A. LAMMERT, S. LANG, N. ROTTER, B. KRAMER (*Essen; Mannheim; Marburg, Germany*)

Chromobox 2 Expression Predicts Prognosis After Curative Resection of Oesophageal Squamous Cell Carcinoma. S. UEDA, M. KANDA, Y. SATO, H. BABA, S. NAKAMURA, K. SAWAKI, D. SHIMIZU, S. MOTOYAMA, T. FUJII, Y. KODERA, S. NOMOTO (*Nagoya; Akita; Toyama, Japan*)

Fusion of the Lumican (*LUM*) Gene With the Ubiquitin Specific Peptidase 6 (*USP6*) Gene in an Aneurysmal Bone Cyst Carrying a t(12;17)(q21;p13) Chromosome Translocation. I. PANAGOPOULOS, L. GORUNOVA, K. ANDERSEN, I. LOBMAIER, M. LUND-IVERSEN, F. MICCI, S. HEIM (*Oslo, Norway*)

Influence of Concurrent Mutations on Overall Survival in EGFR-mutated Non-small Cell Lung Cancer. M. CHEVALLIER, P. TSANTOULIS, A. ADDEO, A. FRIEDLAENDER (*Geneva, Switzerland*)

Long Noncoding RNA *ANROC* on the *INK4* Locus Functions to Suppress Cell Proliferation. Y. KOTAKE, T. TSURUDA (*Fukuoka, Japan*)

The KDR (VEGFR-2) Genetic Polymorphism Q472H and c-KIT Polymorphism M541L Are Associated With More Aggressive Behaviour in Astrocytic Gliomas. N. ZAMAN, S.S. DASS, P.D. PARCQ, S. MACMAHON, L. GALLAGHER, L. THOMPSON, J.S. KHORASHAD, C. LIMBÄCK-STANIC (*London, UK*)

KIF15 Expression in Tumor-associated Monocytes Is a Prognostic Biomarker in Hepatocellular Carcinoma. A. KITAGAWA, T. MASUDA, J. TAKAHASHI, T. TOBO, M. NODA, Y. KURODA, Q. HU, Y. KOUYAMA, Y. KOBAYASHI, S. KURAMITSU, K. SATO, A. FUJII, Y. YOSHIKAWA, H. WAKIYAMA, D. SHIMIZU, Y. TSURUDA, H. EGUCHI, Y. DOKI, M. MORI, K. MIMORI (*Oita; Osaka; Fukuoka, Japan*)