

## Instructions for Authors 2020

**General Policy.** IN VIVO is a multidisciplinary journal designed to bring together original high quality works and reviews on experimental and clinical biomedical research within the frames of human physiology, pathology and disease management. The topics of IN VIVO include: 1. Experimental development and application of new diagnostic and therapeutic procedures; 2. Pharmacological and toxicological evaluation of new drugs, drug combinations and drug delivery systems; 3. Clinical trials; 4. Development and characterization of models of biomedical research; 5. Cancer diagnosis and treatment; 6. Immunotherapy and vaccines; 7. Radiotherapy, Imaging; 8. Tissue engineering, Regenerative medicine; 9. Carcinogenesis; Each article should include a concrete conclusion constituting of a “new piece of knowledge” backed up by scientific evidence. 10. Retrospective studies and case reports. The principal aim of IN VIVO is to provide prompt online publication for accepted articles, generally within 1-2 months from final acceptance.

Manuscripts will be accepted on the understanding that they report original unpublished works that are not under consideration for publication by another journal, and that they will not be published again in the same form. All authors should sign a submission letter confirming the approval of their article contents. All material submitted to IN VIVO will be subject to peer-review, when appropriate, by two members of the Editorial Board. All manuscripts submitted to IN VIVO are urgently treated with absolute confidence, with access restricted to the Managing Editor, the journal’s secretary, the reviewers and the printers. The Editors reserve the right to improve manuscripts on grammar and style.

The use of animals in biomedical research should take place under careful supervision of a person adequately trained in this field and the animals must be treated humanely at all times. Such research should adhere to the Guiding Principles in the Care and Use of Animals approved by the Council of the American Physiological Society.

The Editors and Publishers of IN VIVO accept no responsibility for the contents and opinions expressed by the contributors. Authors should warrant due diligence in the creation and issuance of their work.

**Open Access Policy.** IN VIVO appears bimonthly as an online-only open access journal through the Stanford University HighWire Press. Upon acceptance, Authors will be asked to pay an online publication fee of USD 700.00 (effective January 1, 2020) for articles up to 8 online pages (including figures and tables). Each additional excess page will be charged USD 60.00. Color will not be charged. Authors from developing countries may apply for a 25% discount after the acceptance of their paper. IN VIVO online will keep the volume and issue numbers, as well as page numbering.

**Copyright.** Authors retain copyright. The unrestricted non-commercial use, distribution and reproduction in any medium of IN VIVO articles for academic reasons is allowed, provided that the original work is properly cited. The Authors grant the permanent right to the publisher to use any articles published in this journal without any restriction, including academic advertising purposes. PDF, XML and html files of all articles published in IN VIVO are the property of the publisher.

**Format.** Two types of papers may be submitted: (i) Full papers containing completed original work, and (ii) review articles concerning fields of recognisable progress. Papers should contain all essential data in order to make the presentation clear. Papers should be written in clear, concise English. Spelling should follow that given in the “Shorter Oxford English Dictionary”.

**Manuscripts.** Manuscripts should be divided into the following sections: (a) *First page* including the title of the presented work [not exceeding fifteen (15) words], full names and full postal addresses of all Authors, name of the Author to whom proofs are to be sent, key words, an abbreviated running title, an indication “review”, “clinical”, “epidemiological”, or “experimental” study, and the date of submission. (Note: The order of the Authors is not necessarily indicative of their contribution to the work. Authors may note their individual contribution(s) in the appropriate section(s) of the presented work); (b) *Abstract* not exceeding 150 words, organized according to the following headings: Background/Aim – Materials and Methods/Patients and Methods – Results – Conclusion; (c) *Introduction*; (d) *Materials and Methods/Patients and Methods*; (e) *Results*; (f) *Discussion*; (g) *Conflicts of Interest*; (h) *Authors’ contributions*; (i) *Acknowledgements*; (j) *References*. All pages must be numbered consecutively. Footnotes should be avoided. Review articles may follow a different style according to the subject matter and the Author’s opinion. Review articles should not exceed 35 pages (approximately 250 words per double-spaced typed page) including all tables, figures, and references.

**Figures.** All figures should appear **at the end** of the submitted document file. Once a manuscript is accepted all figures and graphs should be submitted separately in either jpg, tiff or pdf format and at a minimum resolution of 300 dpi. Graphs must be submitted as pictures made from drawings and must not require any artwork, typesetting, or size modifications. Symbols, numbering and lettering should be clearly legible. The number and top of each figure must be indicated. Pages that include color figures are not subject to color charges.

**Tables.** All tables should appear **at the end** of the submitted document file. Once a manuscript is accepted, each table should be submitted separately, typed double-spaced. Tables should be numbered with Roman numerals and should include a short title.

**References.** Authors must assume responsibility for the accuracy of the references used. Citations for the reference sections of submitted works should follow the form below and must be numbered consecutively. In the text, references should be cited by number in parenthesis. Examples: 1 Kenyon J, Liu W and Dalglish A: Report of objective clinical responses of cancer patients to pharmaceutical-grade synthetic cannabidiol. *Anticancer Res* 38(10): 5831-5835, 2018. PMID: 30275207. DOI: 10.21873/anticancer.12924. (PMIDs and DOIs only if applicable). 2 McGuire WL and Chamnes GC: Studies on the oestrogen receptor in breast cancer. In: *Receptors for Reproductive Hormones*. O' Malley BW, Chamnes GC (eds.). New York, Plenum Publ Corp., pp 113-136, 1973. 3 Global Health Estimates 2015: Disease Burden by Cause, Age, Sex, by Country and by Region, 2000-2015. Geneva, World Health Organisation, 2016. Available at [http://www.who.int/healthinfo/global\\_burden\\_disease/estimates/en/index2.html](http://www.who.int/healthinfo/global_burden_disease/estimates/en/index2.html). Last accessed on 3rd April 2018. (The web address should link directly to the cited information and not to a generic webpage).

**Nomenclature and Abbreviations.** Nomenclature should follow that given in "Chemical Abstracts", "Index Medicus", "Merck Index", "IUPAC -IUB", "Bergey's Manual of Determinative Bacteriology", The CBE Manual for Authors, Editors and Publishers (6th edition, 1994), and MIAME Standard for Microarray Data. Human gene symbols may be obtained from the HUGO Gene Nomenclature Committee (HGNC) (<http://www.gene.ucl.ac.uk/>). Approved mouse nomenclature may be obtained from <http://www.informatics.jax.org/>. Standard abbreviations are preferable. If a new abbreviation is used, it must be defined on first usage.

**Clinical Trials.** Authors of manuscripts describing clinical trials should provide the appropriate clinical trial number in the correct format in the text.

For International Standard Randomised Controlled Trials (ISRCTN) Registry (a not-for-profit organization whose registry is administered by Current Controlled Trials Ltd.) the unique number must be provided in this format: ISRCTNXXXXXXXX (where XXXXXXXX represents the unique number, always prefixed by "ISRCTN"). Please note that there is no space between the prefix "ISRCTN" and the number. Example: ISRCTN47956475.

For Clinicaltrials.gov registered trials, the unique number must be provided in this format: NCTXXXXXXXX (where XXXXXXXX represents the unique number, always prefixed by "NCT"). Please note that there is no space between the prefix "NCT" and the number. Example: NCT00001789.

**Ethical Policies and Standards.** IN VIVO agrees with and follows the "Uniform Requirements for Manuscripts Submitted to Biomedical Journals" established by the International Committee of Medical Journal Editors in 1978 and updated in October 2001 ([www.icmje.org](http://www.icmje.org)). Microarray data analysis should comply with the "Minimum Information About Microarray Experiments (MIAME) standard". Specific guidelines are provided at the "Microarray Gene Expression Data Society" (MGED) website. Presentation of genome sequences should follow the guidelines of the NHGRI Policy on Release of Human Genomic Sequence Data. Research involving human beings must adhere to the principles of the Declaration of Helsinki and Title 45, U.S. Code of Federal Regulations, Part 46, Protection of Human Subjects, effective December 13, 2001. Research involving animals must adhere to the Guiding Principles in the Care and Use of Animals approved by the Council of the American Physiological Society. The use of animals in biomedical research should be under the careful supervision of a person adequately trained in this field and the animals must be treated humanely at all times. Research involving the use of human foetuses, foetal tissue, embryos and embryonic cells should adhere to the U.S. Public Law 103-41, effective December 13, 2001.

**Submission of Manuscripts.** Please follow the Instructions for Authors regarding the format of your manuscript and references. Manuscripts must be submitted only through our online submission system at: <http://www.iar-submissions.com/login.html> In case a submission is incomplete, the corresponding Author will be notified accordingly. Questions regarding difficulties in using the online submission system should be addressed to: email: [journals@iar-anticancer.org](mailto:journals@iar-anticancer.org)

**Galley Proofs.** Unless otherwise indicated, galley proofs will be sent to the corresponding Author of the submission. Corrections of galley proofs should be limited to typographical errors. Galley proofs should be returned corrected to the Editorial Office by email within two days.

### **Specific information and additional instructions for Authors**

1. In Vivo (IV) will consider the publication of conference proceedings and/or abstracts provided that the material submitted fulfils the quality requirements and instructions of the journal, following the regular review process by two suitable referees.
2. An acknowledgement of receipt, including the article number, title and date of receipt is sent to the corresponding author of each manuscript upon receipt. If this receipt is not received within 20 days from submission, the author should call or write to the Editorial Office to ensure that the manuscript (or the receipt) was not lost in the mail.

3. Each manuscript submitted to IV is sent for peer-review in confidence to two suitable referees with the request to return the manuscript with their comments to the Editorial Office within 12 days from receipt. If reviewers need a longer time or wish to send the manuscript to another expert, the manuscript may be returned to the Editorial Office with a delay. All manuscripts submitted to IV, are treated in confidence, without access to any person other than the Managing Editor, the journal's secretary, the reviewers and the printers.
4. All accepted manuscripts are carefully corrected in style and language, if necessary, to make presentation clear. (There is no fee for this service). Every effort is made (a) to maintain the personal style of the author's writing and (b) to avoid change of meaning. Authors will be requested to examine carefully manuscripts which have undergone language correction at the pre-proof or proof stage.
5. Authors should pay attention to the following points when writing an article for IN VIVO:
  - The Instructions to Authors must be followed in every detail.
  - The presentation of the experimental methods should be clear and complete in every detail facilitating reproducibility by other scientists.
  - The presentation of results should be simple and straightforward in style. Results and discussion should not be combined into one section, unless the paper is short.
  - Results given in figures should not be repeated in tables.
  - Figures (graphs or photographs) should be prepared at a width of 8 or 17 cm with legible numbers and lettering.
  - Photographs should be clear with high contrast, presenting the actual observation described in the legend and in the text. Each legend should provide a complete description, being self-explanatory, including technique of preparation, information about the specimen and magnification.
  - Statistical analysis should be elaborated wherever it is necessary. Simplification of presentation by giving only numerical or % values should be avoided.
  - Fidelity of the techniques and reproducibility of the results, should be points of particular importance in the discussion section. Authors are advised to check the correctness of their methods and results carefully before writing an article. Probable or dubious explanations should be avoided.
  - Authors should not cite results submitted for publication in the reference section. Such results may be described briefly in the text with a note in parenthesis (submitted for publication by... authors, year).
  - References. Each article should address, list and discuss the entire spectrum of current publications relevant to its field.
  - By following these instructions, Authors will facilitate a more rapid review and processing of their manuscripts and will provide the readers with concise and useful papers.
6. Following review and acceptance, a manuscript is examined in language and style, and galley proofs are rapidly prepared. Second proofs are not sent unless required.
7. Authors should correct their galley proofs very carefully and preferably twice. An additional correction by a colleague always proves to be useful. Particular attention should be paid to chemical formulas, mathematical equations, symbols, medical nomenclature etc. Any system of correction marks can be used in a clear manner, preferably with a red pen. Additions or clarifications are allowed provided that they improve the presentation but do not bring new results (no fee).
8. Articles submitted to IN VIVO may be rejected without review if:
  - they do not fall within the journal's policy.
  - they do not follow the instructions for authors.
  - language is unclear.
  - results are not sufficient to support a final conclusion.
  - results are not objectively based on valid experiments.
  - they repeat results already published by the same or other authors before the submission to IV.
  - plagiarism is detected by plagiarism screening services.(Rejection rate (2016): 59%).
9. Authors who wish to prepare a review should contact the Managing Editor of the journal in order to get confirmation of interest in the particular topic of the review and to allow programming of space availability. The expression of interest by the Managing Editor does not necessarily imply acceptance of the review by the journal.
10. Authors may inquire information about the status of their manuscript(s) by calling the Editorial Office at +30-22950-53389, Monday to Friday 9.00-16.00 (Athens time), or by sending an e-mail to [journals@iiar-anticancer.org](mailto:journals@iiar-anticancer.org).
11. Authors who wish to edit a special issue on a particular topic should contact the Managing Editor.  
(This text is a combination of advice and suggestions contributed by Editors, Authors, Readers and the Managing Editor of IV).

# ANTICANCER RESEARCH

International Journal of Cancer Research and Treatment

ISSN: 0250-7005

Volume 40, Number 1, January 2020

## Contents

### Review

Current Treatment of Colorectal Liver Metastasis as a Chronic Disease. N.M. DORR, M. BARTELS, M.H. MORGUL (*Leipzig; Münster, Germany*)..... 1

### Experimental Studies

SAHA and EGCG Promote Apoptosis in Triple-negative Breast Cancer Cells, Possibly Through the Modulation of cIAP2. K.L. STEED, H.R. JORDAN, T.O. TOLLEFSBOL (*Birmingham, AL, USA*)..... 9

Genetic Polymorphisms in IL-10 Promoter Are Associated With Smoking and Prostate Cancer Risk in African Americans. M. ABBAS, T. MASSON, A. BRAD, M. KIBRAWJESHI, V. APPREY, Y. KANAAN, B. WILSON, G. DUNSTON, L. RICKS-SANTI, H. BRIM (*Washington, DC; Silver Spring, MD; Hanapee, VA, USA*)..... 27

High Expression of c-Met, PKC $\lambda$  and ALDH1A3 Predicts a Poor Prognosis in Late-stage Breast Cancer. H. MOTOMURA, Y. NOZAKI, C. ONAGA, A. OZAKI, S. TAMORI, T.-A. SHIINA, S. KANAI, C. OHIRA, Y. HARA, Y. HARADA, R. TAKASAWA, T. HANAWA, S.-I. TANUMA, Y. MANO, T. SATO, K. SATO, K. AKIMOTO (*Chiba, Japan*)..... 35

Targeting Fibroblast Growth Factor Receptor (FGFR) and Phosphoinositide 3-kinase (PI3K) Signaling Pathways in Medulloblastoma Cell Lines. S. HOLZHAUSER, M. LUKOSEVICIUTE, T. ANDONOVA, R.G. URSU, T. DALIANIS, M. WICKSTRÖM, O.N. KOSTOPOULOU (*Stockholm; Sueden; Iasi, Romania*)..... 53

Cisplatin Induced the Expression of SEI1 (TRIP-Br1) Oncogene in Human Oral Squamous Cancer Cell Lines. J. LI, Z. VANGUNDY, M. POI (*Columbus, OH, USA*)..... 67

Contents continued on the back cover

ISSN (online): 1791-7530 / ISSN (print): 0250-7005

## General Policy

● **ANTICANCER RESEARCH** is an independent international forum devoted to the rapid publication of original high quality articles and reviews on all aspects of experimental and clinical oncology. Prompt evaluation of all submitted articles in confidence and rapid publication within 1-2 months from acceptance are guaranteed.

● **ANTICANCER RESEARCH** is published monthly by the International Institute of Anticancer Research and is available online with Stanford University HighWire Press.

● **Editorial Office:** International Institute of Anticancer Research, 1st km Kapandritiou-Kalamou Rd., P.O. Box 22, Kapandriti, Attiki 19014, Greece. Tel: +30 22950 52945, Fax: +30 22950 53389.

**U.S. Branch:** Anticancer Research Inc., USA, 111 Bay Avenue, Highlands, NJ, USA.

● **E-mail:** journals@iia-anticancer.org; IIA WEBSITES: www.iia-anticancer.org and www.iiajournals.org

## ● Selection of Recent Articles

SAHA and EGCG Promote Apoptosis in Triple-negative Breast Cancer Cells, Possibly Through the Modulation of cIAP2. K.L. STEED, H.R. JORDAN, T.O. TOLLEFSBOL (*Birmingham, AL, USA*)

Targeting Fibroblast Growth Factor Receptor (FGFR) and Phosphoinositide 3-kinase (PI3K) Signaling Pathways in Medulloblastoma Cell Lines. S. HOLZHAUSER, M. LUKOSEVICIUTE, T. ANDONOVA, R.G. URSU, T. DALIANIS, M. WICKSTRÖM, O.N. KOSTOPOULOU (*Stockholm, Sweden; Iasi, Romania*)

Quantitative Structure–Cytotoxicity Relationship of 2-Arylazolychromones and 2-Triazolylchromones. J. NAGAI, H. SHI, N. SEZAKI, N. YOSHIDA, K. BANDOW, Y. UESAWA, H. SAKAGAMI, M. TOMOMURA, A. TOMOMURA, K. TAKAO, Y. SUGITA (*Tokyo; Sakado; Urayasu, Japan; Shanghai, PR China*)

High Expression of c-Met, PKC $\lambda$  and ALDH1A3 Predicts a Poor Prognosis in Late-stage Breast Cancer. H. MOTOMURA, Y. NOZAKI, C. ONAGA, A. OZAKI, S. TAMORI, T.-A. SHIINA, S. KANAI, C. OHIRA, Y. HARA, Y. HARADA, R. TAKASAWA, T. HANAWA, S.-I. TANUMA, Y. MANO, T. SATO, K. SATO, K. AKIMOTO (*Chiba, Japan*)

Chronic Expanding Hematoma with a t(11;19)(q13;q13) Chromosomal Translocation. I. PANAGOPOULOS, L. GORUNOVA, I. KOSTOLOMOV, I. LOBMAIER, B. BJERKEHAGEN, S. HEIM (*Oslo, Norway*)

PGC-1 $\alpha$  Regulates Cell Proliferation and Invasion via AKT/GSK-3 $\beta$ /catenin Pathway in Human Colorectal Cancer SW620 and SW480 cells. S.-H. YUN, J.-I. PARK (*Busan, Republic of Korea*)

Symptomatic Mandibular Fibrous Dysplasia With Concurrent Triple X- and Premutation Stage Fragile-X-Syndrome: Case Report With Short Literature Survey. R.E. FRIEDRICH, F.K. KOHLRUSCH, A.M. LUEBKE (*Hamburg, Germany*)

Cisplatin Induced the Expression of SEI1 (TRIP-Br1) Oncogene in Human Oral Squamous Cancer Cell Lines. J. LI, Z. VANGUNDY, M. POI (*Columbus, OH, USA*)

High Rate of Detection of Human ESPL1–HBV S Fusion Gene in Patients With HBV-related Liver Cancer: A Chinese Case–Control Study. B. HU, W. HUANG, R. WANG, W. ZANG, M. SU, H. LI, H. WANG, B. CAO, D. DENG, Q.Q. LI, J. JIANG (*Nanning; Hefei, PR China; Bethesda, MD, USA*)

Brief Pain Inventory (BPI) Health Survey After Midline Laparotomy With the Rectus Sheath Block (RSB) Analgesia: A Randomised Trial of Patients With Cancer and Benign Disease. V. KUOSMANEN, M. RUOTTINEN, D. RAHKOLA, I. SAIMANEN, V. KAARONEN, T. SELANDER, M. PURDY, H. KOKKI, M. KOKKI, M. ESKELINEN (*Kuopio, Finland*)

Current Treatment of Colorectal Liver Metastasis as a Chronic Disease. N.M. DORR, M. BARTELS, M.H. MORGUL (*Leipzig; Münster, Germany*)

Review of Recent Advances in Understanding the Role of Vitamin D Role in Reducing Cancer Risk: Breast, Colorectal, Prostate, and Overall Cancer. W.B. GRANT (*San Francisco, CA, USA*)

Chemoprevention of Prostate Cancer by Natural Agents: Evidence from Molecular and Epidemiological Studies. K. MOKBEL, U. WAZIR, K. MOKBEL (*London, UK*)

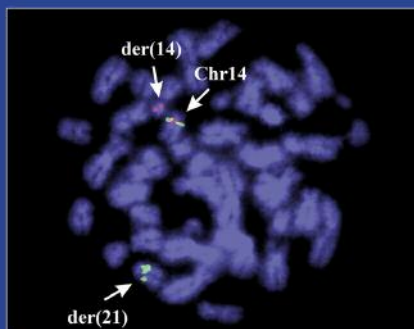
Adherence to Adjuvant Aromatase Inhibitor Therapy Among Postmenopausal Hispanic/Latino Women With Breast Cancer. A. PHILIPOVSKIY, A. CAMPBELL, R. HEYDARIAN, B. CASTILLO, A.K. DWIVEDI, R. MCCALLUM, R. AGUILERA, S. GAUR, N. ZEINA (*El Paso, TX; Weston, FL, USA*)

Treatment Algorithm for Patients With Gastric Adenocarcinoma: An Austrian Consensus on Systemic Therapy. E. WÖLL, W. EISTERER, A. GERGER, T. KÜHR, G.W. PRAGER, H. RUMPOLD, H. ULRICH-PUR, U. VOGL, T. WINDER, L. WEISS, R. GREIL (*Zams; Klagenfurt; Graz; Wels; Vienna; Feldkirch; Salzburg, Austria*)

# CANCER GENOMICS & PROTEOMICS

Volume 17, Number 1, January-February 2020

ISSN (online): 1790-6245



Published by the International Institute of Anticancer Research

Online ISSN: 1790-6245

## General Policy

- **CANCER GENOMICS & PROTEOMICS (CGP)** welcomes submissions of original high quality articles and reviews on all aspects of the application of genomic and proteomic technologies to experimental and clinical cancer research. The journal's scientific spectrum includes: (a) molecular causes of carcinogenesis, cancer progression and metastasis; (b) structural and functional aspects of genes in the cancer cell; (c) advances in genomic and proteomic technologies applicable to cancer research; (d) anticancer drug design and drug development. A main aim of CGP is to ensure the prompt and confidential review, and rapid publication of original works and reviews, generally within 1-3 months from submission.
- CGP is published bimonthly by the **International Institute of Anticancer Research (IIAR)** and is available online only and open access with **Stanford University HighWire Press**. For more information please visit our website [www.cgp.iiarjournals.org](http://www.cgp.iiarjournals.org).
- **Editorial Office:** International Institute of Anticancer Research, 1st km Kapandritiou-Kalamou Rd., P.O. Box 22, Kapandriti, Attiki 19014, Greece. Tel: +30 22950 52945, Fax: +30 22950 53389.  
**U.S. Branch:** Anticancer Research Inc., USA, 111 Bay Avenue, Highlands, NJ, USA.
- **E-mail:** [journals@iiar-anticancer.org](mailto:journals@iiar-anticancer.org); IIAR WEBSITES: [www.iiar-anticancer.org](http://www.iiar-anticancer.org) and [www.iiarjournals.org](http://www.iiarjournals.org)

## ● Selection of Recent Articles

Duplex DNA from Sites of Helicase-Polymerase Uncoupling Links Non-B DNA Structure Formation to Replicative Stress. C. AMPARO, J. CLARK, V. BEDELL, J.L. MURATA-COLLINS, M. MARTELLA, F. PICHIORRI, E.F. WARNER, M. ABDELHAMID, Z.A.E. WALLER, S.S. SMITH (*Duarte, CA, USA; Norwich, UK*)

Pazopanib Inhibits Tumor Growth, Lymph-node Metastasis and Lymphangiogenesis of an Orthotopic Mouse of Colorectal Cancer. G. ZHU, M. ZHAO, Q. HAN, Y. TAN, Y. SUN, M. BOUVET, S.R. SINGH, J. YE, R.M. HOFFMAN (*San Diego, CA; Frederick, MD, USA; Fuzhou, PR China*)

KIF15 Expression in Tumor-associated Monocytes Is a Prognostic Biomarker in Hepatocellular Carcinoma. A. KITAGAWA, T. MASUDA, J. TAKAHASHI, T. TOBO, M. NODA, Y. KURODA, Q. HU, Y. KOUYAMA, Y. KOBAYASHI, S. KURAMITSU, K. SATO, A. FUJII, Y. YOSHIKAWA, H. WAKIYAMA, D. SHIMIZU, Y. TSURUDA, H. EGUCHI, Y. DOKI, M. MORI, K. MIMORI (*Oita; Osaka; Fukuoka, Japan*)

Chromosome Translocation t(14;21)(q11;q22) Activates Both OLIG1 and OLIG2 in Pediatric T-cell Lymphoblastic Malignancies and May Signify Adverse Prognosis. I. PANAGOPOULOS, L. GORUNOVA, I.M. RINVOLL JOHANNSDOTTIR, K. ANDERSEN, A. HOLTH, K. BEISKE, S. HEIM (*Oslo, Norway*)

Whole Transcriptomic Analysis of Apigenin-mediated Influence on TNF $\alpha$  Immuno-activated MDA-MB-231 Breast Cancer Cells. D. BAUER, E. MAZZIO, K.F.A. SOLIMAN (*Tallahassee, FL, USA*)

Significant Association Between the MiR146a Genotypes and Susceptibility to Childhood Acute Lymphoblastic Leukemia in Taiwan. J.-S. PEI, W.-S. CHANG, P.-C. HSU, C.-C. CHEN, Y.-T. CHIN, T.-L. HUANG, Y.-N. HSU, C.-C. KUO, Y.-C. WANG, C.-W. TSAI, C.-L. GONG, D.-T. BAU (*Taoyuan; Taichung, Taiwan, ROC*)

Clonal Relationship Between Lichen Sclerosus, Differentiated Vulvar Intraepithelial Neoplasia and Non HPV-related Vulvar Squamous Cell Carcinoma. A.-F.W. POUWER, L.C.G. VAN DEN EINDEN, M. VAN DER LINDEN, J.Y. HEHIR-KWA, J. YU, K.M. HENDRIKS, E.J. KAMPING, A. EIJKELENBOOM, L.F.A.G. MASSUGER, J. BULTEN, A.A.G. VAN TILBORG, J.A. DE HULLU, R.P. KUIPER (*Nijmegen; Utrecht, the Netherlands*)

Identification of Novel Prognosis and Prediction Markers in Advanced Prostate Cancer Tissues Based on Quantitative Proteomics. O.K. KWON, Y.-S. HA, A.Y. NA, S.Y. CHUN, T.G. KWON, J.N. LEE, S. LEE (*Daegu, Republic of Korea*)

BRD4-Regulated Molecular Targets in Mantle Cell Lymphoma: Insights into Targeted Therapeutic Approach. T. TSUKAMOTO, S. NAKAHATA, R. SATO, A. KANAI, M. NAKANO, Y. CHINEN, S. MAEGAWA-MATSUI, Y. MATSUMURA-KIMOTO, T. TAKIMOTO-SHIMOMURA, Y. MIZUNO, S. KUWAHARA-OTA, Y. KAWAJI, M. TANIWAKI, T. INABA, K. TASHIRO, K. MORISHITA, J. KURODA (*Kyoto; Miyazaki; Hiroshima, Japan*)

MicroRNAs Involved in Metastasis of Hepatocellular Carcinoma: Target Candidates, Functionality and Efficacy in Animal Models and Prognostic Relevance. U.H. WEIDLE, D. SCHMID, F. BIRZELE, U. BRINKMANN (*Penzberg, Germany; Basel, Switzerland*)

Increased Expression of Gremlin1 Promotes Proliferation and Epithelial Mesenchymal Transition in Gastric Cancer Cells and Correlates With Poor Prognosis of Patients With Gastric Cancer. Z. SUN, S. CAI, C. LIU, Y. CUI, J. JI, W.G. JIANG, L. YE (*Cardiff, UK; Beijing, PR China*)

Contents continued

Radiotherapy in the COVID-19 Pandemic Era. A. GONNELLI, S. MONTRONE, P. COCUZZA, S. URSINO, B. MANFREDI, R. MATTIONI, N. COCCIA, T. FUENTES, E. CALISTRI, F. PASQUALETTI, F. PAIAR ( <i>Pisa; Lucca, Italy</i> ) .....	3731
Chest Computed Tomography Scoring in Patients With Novel Coronavirus-infected Pneumonia: Correlation With Clinical and Laboratory Features and Disease Outcome. L. PUGLIESE, F.P. SBORDONE, F. GRIMALDI, F. RICCI, F. DI TOSTO, L. SPIRITIGLIOZZI, C. DI DONNA, M. PRESICCE, V. DE STASIO, L. BENELLI, F. D'ERRICO, M. PASQUALETTO, J.M. LEGRAMANTE, M. MATERAZZO, M. PELLICCIARO, O.C. BUONOMO, G. VANNI, S. RIZZA, A. BELLIA, R. FLORIS, F. GARACI, M. CHIOCCHI ( <i>Rome, Italy</i> ).....	3735
Tracheostomy in Patients With COVID-19: A Single-center Experience. K. OBATA, R. MIYATA, K. YAMAMOTO, N. BYN-YA, T. KASAI, H. INOUE, E. NARIMATSU, K. TAKANO ( <i>Sapporo, Japan</i> )...	3747
A Nasopharyngeal Carcinoma Patient With COVID-19 Infection After Immunotherapy: A Case Report and Literature Review. M. ZHAI, S. ZHANG ( <i>Wuhan, PR China</i> ) .....	3753
Index.....	3757

Evaluation of Blood-based Biomarkers for Prediction of Response in Carboplatin-treated Metastatic Castration-resistant Prostate Cancer Patients. J. MORITZ, T. BAUERNHOFER, S. MANNWEILER, T. LANGSENLEHNER, K. PUMMER, N. DANDACHI, M. PICHLER ( <i>Graz, Austria</i> ) .....	3631
Association Between Mortality and Left Ventricular Ejection Fraction in Patients With Takotsubo Syndrome Versus Acute Coronary Syndrome. M. ABUMAYYALEH, I. EL-BATTRAWY, M. KUMMER, T. GIETZEN, M. BEHNES, X.-B. ZHOU, S. LANG, M. BORGGREFE, I. AKIN ( <i>Mannheim, Germany</i> ) .....	3639
Solitary Fibrous Tumor of the Orbit: A Clinicopathologic Study of Two Cases With Review of the Literature. M. MITAMURA, S. KASE, Y. SUZUKI, T. SAKAGUCHI, Y. SUIMON, Y. DONG, K.C. HATANAKA, T. SINOHARA, M. KASE, S. ISHIDA ( <i>Sapporo, Japan</i> ) .....	3649
Changing Patterns of Distant Metastasis in Patients With Lower Rectal Cancer Undergoing Intraoperative Radiotherapy. T. MASAKI, H. MATSUOKA, T. KISHIKI, K. KOJIMA, A. TONARI, N. ASO, A. BENIYA, A. IIOKA, T. WAKAMATSU, E. SUNAMI ( <i>Tokyo, Japan</i> ) .....	3655
Rectal Cancer Surgery in Patients Older Than 80 Years: Is Hartmann's Procedure Safe? K. IGUCHI, H. MUSHIAKE, S. HASEGAWA, D. INAGAKI, T. FUKUSHIMA, M. NUMATA, H. TAMAGAWA, N. YUKAWA, Y. RINO, M. MASUDA ( <i>Yokohama, Japan</i> ) .....	3661
Pegfilgrastim Maintains Relative Dose Intensity and Decreases Hospitalisations in Patients With Endometrial Cancer. K. CHIKAZAWA, K. IMAI, T. ITO, A. KIMURA, K. HIROYOSHI, Y. MIHO, T. KUWATA, R. KONNO ( <i>Saitama, Japan</i> ) .....	3669
Survival Outcomes After High-dose Chemotherapy and Stem Cell Transplantation in the Salvage Setting for Relapsed or Refractory Germ Cell Cancers. A. SHARMA, D.S. BABRA, P.V. JOSHI, M. HALL, A. GOGBASHIAN, N. VASDEV, M. JOSEPH, A. YAZDAN, E. KANFER ( <i>London; Stevenage, UK</i> ).....	3675
Transapical Left Ventricular Approach for Cardiac Papillary Fibroelastomas: A Case Report. O. STIRU, R.C. GEANA, P.R. DRAGULESCU, A. TULIN, L. RADUCU, N. BACALBASA, I. BALESCU, D. CRETOIU, C. DIACONU, L. ILIESCU, C. SAVU, V.A. ILIESCU ( <i>Bucharest, Romania</i> ) .....	3681
Gender-specific Performance of a Diagnostic Score in Acute Appendicitis. J. MEKLIN, M. ESKELINEN, K. SYRJÄNEN, M. ESKELINEN ( <i>Kuopio; Kaarina, Finland; Barretos, Brazil</i> ) .....	3687
A Novel Systemic Inflammatory Score Combined With Immunoinflammatory Markers Accurately Reflects Prognosis in Patients With Esophageal Cancer. T. SUZUKI, Y. ISHIBASHI, H. TSUJIMOTO, S. NOMURA, K. KOUZU, Y. ITAZAKI, T. SUGIHARA, M. HARADA, N. ITO, H. SUGASAWA, Y. KISHI, H. UENO ( <i>Saitama, Japan</i> ) .....	3705
De-escalated Therapy Omitting Anthracyclines for Stage I HER2-positive Breast Cancer: A Retrospective Observational Study. S. NAKAMOTO, M. IKEDA, S. KUBO, M. YAMAMOTO, T. YAMASHITA ( <i>Fukuyama, Japan</i> ) .....	3713
Clinical Prognostic Factors for Local Control and Survival After Irradiation of Grade II Gliomas. J. WITTELER, S.E. SCHILD, D. RADES ( <i>Lübeck, Germany; Scottsdale, AZ, USA</i> ) .....	3719
<i>Articles on Covid-19</i>	
Classical Drug Digitoxin Inhibits Influenza Cytokine Storm, With Implications for Covid-19 Therapy. B.S. POLLARD, J.C. BLANCOI, J.R. POLLARD ( <i>Rockville, MD; Newark, DE, USA</i> ) .....	3723

Correlation Between the Metabolic Conversion of a Capecitabine Metabolite, 5'-Deoxy-5-fluorocytidine, and Creatinine Clearance. T. INAISHI, K.-I. FUJITA, N. MATSUMOTO, T. SHIMOKATA, O. MAEDA, T. KIKUMORI, N. HATTORI, G. NAKAYAMA, Y. ANDO ( <i>Nagoya; Tokyo, Japan</i> ) .....	3539
New-onset Post-transplant Diabetes and Therapy in Long-term Survivors After Allogeneic Hematopoietic Stem Cell Transplantation. V.D. VIA, J.P. HALTER, S. GERULL, C. ARRANTO, A. TICHELLI, D. HEIM, J.R. PASSWEG, M. MEDINGER, N. CESANA-NIGRO ( <i>Basel; Solothurn, Switzerland</i> ).....	3545
Impact of Osteopenia on Oncologic Outcomes After Curative Resection for Pancreatic Cancer. T. MOTOMURA, H. UCHIYAMA, T. IGUCHI, M. NINOMIYA, R. YOSHIDA, T. HONBOH, N. SADANAGA, T. AKASHI, H. MATSUURA ( <i>Fukuoka, Japan</i> ).....	3551
Oncological Outcomes of Pathological T1 Lower Rectal Cancer Patients With or Without Preoperative Chemoradiotherapy. T. TAIRA, H. NOZAWA, K. KAWAI, K. SASAKI, K. MURONO, M. KANEKO, S. EMOTO, Y. IIDA, H. ISHII, Y. YOKOYAMA, H. ANZAI, H. SONODA, S. ISHIHARA ( <i>Tokyo, Japan</i> ).....	3559
CT Derived Muscle Measures, Inflammation, and Frailty in a Cohort of Older Cancer Patients. M. HARNESHAUG, J.S. BENTH, L. KIRKHUS, B.H. GRONBERG, S. BERGH, S. ROSTOFT, M. SLAAEN ( <i>Ottestad; Oslo; Nordbyhagen; Trondheim; Tønsberg; Hamar, Norway</i> ).....	3565
Clinicopathological Data and Treatment Modalities for Pancreatic Somatostatinomas. A. MASTORAKI, D. SCHIZAS, E. PAPOUTSI, V. NTELLA, P. KANAVIDIS, A. SIOULAS, M. TSOLI, G. CHARALAMPOPOULOS, M. VAILAS, E. FELEKOURAS ( <i>Athens, Greece</i> ).....	3573
Stereotactic Body Radiotherapy Based on <sup>99m</sup> Tc-GSA SPECT Imageguided Inverse Planning for Hepatocellular Carcinoma. Y. KAI, R. TOYA, T. SAITO, T. MATSUYAMA, Y. FUKUGAWA, S. SHIRAIISHI, Y. SHIMOHIGASHI, N. OYA ( <i>Kumamoto, Japan</i> ).....	3583
Clinical Outcomes of Acute Myocardial Infarction Patients With a History of Malignant Tumor. M. NOZAKA, H. YOKOYAMA, K. KITAYAMA, D. NAGAWA, M. HAMADATE, N. MIURA, Y. KAWAMURA, M. NAKATA, F. NISHIZAKI, K. HANADA, T. YOKOTA, M. YAMADA, H. TOMITA ( <i>Hirosaki, Japan</i> ) .....	3589
Bilateral Primary Marginal Zone Lymphoma of the Breast – A Rare Breast Malignancy. S. TALLURI, C.R. SUBRAMANIAN, E. WERNER, V. KASIREDDY, L. PHILIP ( <i>Sayre, PA; Fremont, CA, USA</i> ) .....	3597
Comparison of the Outcome of Patients Protected by the Wearable Cardioverter Defibrillator (WCD) for <90 Wear Days versus ≥90 Wear Days. T.C. DREHER, I. EL-BATRAWY, S. RÖGER, S.L. ROSENKAIMER, S. GERHARDS, J. KUSCHYK, M. BORGGREFE, I. AKIN ( <i>Mannheim; Heidelberg, Germany</i> ).....	3601
Plan-Optimization Method for Central-shielding Pelvic Volumetricmodulated Arc Therapy for Cervical Cancer. R. HIRAI, T. TAMAKI, M. IGARI, Y. KUMAZAKI, S.-E. NODA, S. KATO ( <i>Saitama; Fukushima, Japan</i> ) .....	3611
Low H3K9me3 Expression Is Associated With Poor Prognosis in Patients With Distal Common Bile Duct Cancer. H.G. KIM, J.-Y. SUNG, K. NA, S.-W. KIM ( <i>Seoul, Republic of Korea</i> ).....	3619
Radiotherapy of Grade III Gliomas: Identification of Clinical Prognostic Factors for Local Tumor Control and Survival. D. RADES, J. WITTELER, S.E. SCHILD ( <i>Lübeck, Germany; Scottsdale, AZ, USA</i> ) .....	3627



Impact of Hormone Receptor Status on the Behaviour of HER2+ Breast Cancer. I. KOLAROVA, L. DUSEK, A. RYSKA, K. ODRAZKA, M. DOLEZEL, J. VANASEK, B. MELICHAR, J. PETERA, T. BUCHLER, M. VOSMIK, K. PETRAKOVA, P. TERAROVA, Z. VILASOVA, J. JARKOVSKY ( <i>Hradec Kralove; Pardubice; Brno; Prague; Olomouc, Czech Republic</i> ).....	3441
Clinical Significance of Prognostic Nutritional Index in the Treatment of Esophageal Squamous Cell Carcinoma. K. TAKAO, H. KONISHI, H. FUJIWARA, A. SHIOZAKI, K. SHODA, T. KOSUGA, T. KUBOTA, T. ARITA, R. MORIMURA, Y. MURAYAMA, Y. KURIU, H. IKOMA, M. NAKANISHI, K. OKAMOTO, E. OTSUJI ( <i>Kyoto, Japan</i> ).....	3451
Risk Factors for Delayed Elimination of Methotrexate in Children, Adolescents and Young Adults With Osteosarcoma. K. MISAKA, Y. SUGA, Y. STAUB, A. TSUBATA, T. SHIMADA, Y. SAI, R. MATSUSHITA ( <i>Ishikawa, Japan</i> ).....	3459
Dominant Antibiotic Consumption Patterns Might Be Associated With the Prevalence of Multiple Sclerosis in European Countries. G. TERNÁK, K. BERÉNYI, G. MÁROVICS, A. SÜMEGI, B. FODOR, B. NÉMETH, I. KISS ( <i>Pécs, Hungary</i> ).....	3467
Predicting Biochemical Failure in Irradiated Patients With Prostate Cancer by Tumour Volume Measured by Multiparametric MRI. B. OERTHER, M.V. BUREN, C.M. KLEIN, S. KIRSTE, N.H. NICOLAY, T. SPRAVE, S. SPOHN, D.D. GUNASHEKAR, L. HAGELE, L. BIELAK, M. BOCK, A.-L. GROSU, F. BAMBERG, M. BENNDORF, C. ZAMBOGLOU ( <i>Freiburg, Germany</i> ).....	3473
Implications of Topoisomerase (TOP1 and TOP2 $\alpha$ ) Expression in Patients With Breast Cancer. M. OGINO, T. FUJII, Y. NAKAZAWA, T. HIGUCHI, Y. KOIBUCHI, T. OYAMA, J. HORIGUCHI, K. SHIRABE ( <i>Gunma; Saitama; Chiba, Japan</i> ).....	3483
Safety of Ramucirumab Regimen Without H1-antihistamine Premedication in Patients With Solid Cancers. E. GOTO, T. YAMAGUCHI, N. HATTORI, M. GOTO, M. NISHIHARA, K. UCHIYAMA, Y. RIKITAKE ( <i>Takatsuki; Kobe; Suita; Hirakata, Japan</i> ).....	3489
Salvage Reconstruction With the Masquelet Technique Following Wide Resection for Chondrosarcoma of the Proximal Femoral Metaphysis: A Case Report. M. HAKOZAKI, R. KAWAKAMI, N. SASAKI, N. TOSHIKI, Y. KANEUCHI, H. YAMADA, S. KONNO ( <i>Fukushima, Japan</i> ).....	3495
Axillary Clearance Following Positive Sentinel Lymph Node Biopsy in Symptomatic Breast Cancer. H. SHAKER, Z. MAHATE, G. DABRITZ, M.S. ABSAR ( <i>Manchester, UK</i> ).....	3503
Negative Pressure Wound Therapy (NPWT) in Groin Wounds After Lymphadenectomy in Vulvar Cancer Patients. K.C. ASCIUTTO, S. ACOSTA, C. BORGFELDT ( <i>Lund; Malmö, Sweden</i> ).....	3511
Isolated Avulsion Fracture of the Lesser Trochanter in Adults. H.S. CHO, Y.-K. LEE, B.-H. YOON, J.-W. PARK, Y.-C. HA, K.-H. KOO ( <i>Seongnam; Seoul Paik Hospital</i> ).....	3519
Giant Intrathoracic Schwannoma: A Case Report. C. SAVU, V. GRIGORIE, A. MELINTE, C. DIACONU, L. ILIESCU, M. DIMITRIU, I. BALESU, N. BACALBASA ( <i>Bucharest, Romania</i> ).....	3527
New Anastomosis Technique to Prevent Anastomotic Leakage in Laparoscopic Anterior Resection for Rectal Cancer, Especially Upper Rectal Cancer. K. ANDO, N. KURIYAMA, Y. FUJIMOTO, T. JOGO, K. HOKONOHARA, Q. HU, Y. HISAMATSU, R. NAKANISHI, Y. NAKASHIMA, Y. KIMURA, E. OKI, M. MORI ( <i>Fukuoka, Japan</i> ).....	3533

*Clinical Studies*

Leucocyte Count Does Not Improve the Diagnostic Performance of a Diagnostic Score (DS) in Distinguishing Acute Appendicitis (AA) from Nonspecific Abdominal Pain (NSAP). J. MEKLIN, M. ESKELINEN, K. SYRJANEN, M. ESKELINEN ( <i>Kuopio; Kaarina, Finland; Barretos, Brazil</i> ) .....	3327
Evaluating the Decision-to-Delivery Interval in Emergency Cesarean Sections and its Impact on Neonatal Outcome. J.-A. BRANDT, B. MORGENSTERN, F. THANGARAJAH, B. GRÜTTNER, S. LUDWIG, C. EICHLER, J. RATIU, P. MALLMANN, D. RATIU ( <i>Cologne, Germany</i> ).....	3341
The Systemic Immune-Inflammation Index Predicts Clinical Outcomes in Kidney Transplant Recipients. S.E. HALPERN, D. MORIS, B.I. SHAW, M.K. KRISCHAK, D.G. OLASO, S.J. KESSELI, K. RAVINDRA, L.M. MCELROY, A.S. BARBAS ( <i>Durham, NC, USA</i> ).....	3349
Risk Factors for Severe Complications in Ovarian Cancer Surgery. E.K. EGGER, N. KOHLS, M.B. STOPE, M. CONDIC, M.-D. KEYVER-PAIK, D. KÖNSGEN, T. HILBERT, S. KLASCHIK, D. EXNER, T. VILZ, A. MUSTEA ( <i>Bonn, Germany</i> ) .....	3361
Impact of Surgical Resection on Metachronous Metastases of Colorectal Cancer According to Tumor Doubling Time. H. MIYAKE, K. MURONO, K. KAWAI, H. NOZAWA, H. MAKI, K. HASEGAWA, J. NAKAJIMA, S. ISHIHARA ( <i>Tokyo, Japan</i> ) .....	3367
Genomic Profiling and Clinicopathological Characteristics of Neuroendocrine Tumors of the Lung in East Asian Patients. M. KIM, Y.S. CHUNG, K.A KIM, H.S. SHIM ( <i>Seoul, Republic of Korea</i> ).....	3375
Treatment Outcome of the Combination Therapy of High-dose rate Intracavitary Brachytherapy and Intensity-modulated Radiation Therapy With Central-shielding for Cervical Cancer. Y. MUKAI, Y. MINAGAWA, H. INOUE, A. SATO, K. MATSUI, T. FUKUDA, K. ONUMA, H. HONGO, R. SHIRATA, H. NAGATA, H. HASHIMOTO, T. INOUE, M. HATA, M. OMURA ( <i>Yokohama; Kamakura; Fujisawa, Japan</i> ).....	3387
Tolerability and Adverse Events of Adjuvant Chemotherapy for Rectal Cancer in Patients With Diverting Ileostomy. J. TAKAHASHI, S. TSUJINAKA, R. MAEMOTO, Y. MIYAKURA, K. SUZUKI, R. FUKUDA, R. SAKIO, E. MACHIDA, T. RIKIYAMA ( <i>Saitama, Japan</i> ).....	3399
Robotic Incisional Hernia Repair After Robotic-assisted Radical Prostatectomy (RARP): A 3-port Approach. H.-C. OU, L.-H. HUANG, K.-H. CHANG, Y.-C. OU, M.-C. TUNG, W.-C. WENG, C.-Y. HSU, Y.-S. LIN, C.-H. LU, T.-Y. TSAO ( <i>Taichung; Taipei; Miaoli, Taiwan, ROC</i> ).....	3407
Capecitabine Plus Bevacizumab for Cardiac Metastasis of Sigmoid Colon Cancer: Case Report and Literature Review. S. HIROI, M. MIGUCHI, S. IKEDA, H. NAKAHARA, K. SHINOZAKI, T. NISHISAKA, H. EGI, T. ITAMOTO ( <i>Hiroshima, Japan</i> ).....	3413
The (Eternal) Debate on Microwave Ablation Versus Radiofrequency Ablation in BCLC-A Hepatocellular Carcinoma. A.D. RICCI, A. RIZZO, C. BONUCCI, S. TAVOLARI, A. PALLONI, G. FREGA, V. MOLLICA, N. TOBER, E. MAZZOTTA, C. FELICANI, C. SERRA, G. BRANDI ( <i>Bologna, Italy</i> ).....	3421
A Prospective Evaluation of Tru-Cut Biopsy and Fine-needle Aspiration Cytology in Male Breast Cancer Detection. C.A. PISTOLESE, T. PERRETTA, G. CLARONI, L. ANEMONA, F. SERVADEI, A. COLLURA, M. CENSI, M. MATERAZZO, M. PELLICCIARO, F. LAMACCHIA, G. VANNI ( <i>Rome, Italy</i> ).....	3431

Whole Exome Sequencing of <i>SMO</i> , <i>BRAF</i> , <i>PTCH1</i> and <i>GNAS</i> in Odontogenic Diseases. M. SHIMURA, K.-I. NAKASHIRO, Y. SAWATANI, T. HASEGAWA, R. KAMIMURA, S. IZUMI, Y. KOMIYAMA, C. FUKUMOTO, S. YAGISAWA, E. YAGUCHI, M. HITOMI-KOIDE, T. HYODO, D. UCHIDA, H. KAWAMATA ( <i>Tochigi; Ehime, Japan</i> ).....	3233
Co-implantation of Tumor and Extensive Surrounding Tissue Improved the Establishment Rate of Surgical Specimens of Human-Patient Cancer in Nude Mice: Toward the Goal of Universal Individualized Cancer Therapy. T. MURATA, C. HOZUMI, Y. HIROSHIMA, K. SHIMOYA, A. HONGO, S. INUBUSHI, H. TANINO, R.M. HOFFMAN ( <i>Okayama; Narita; Kanagawa; Kurashiki; Kobe, Japan; San Diego, CA, USA</i> ).....	3241
SMN Protein Contributes to Skeletal Muscle Cell Maturation <i>Via</i> Caspase-3 and Akt Activation. S. ANDO, M. TANAKA, N. CHINEN, S. NAKAMURA, M. SHIMAZAWA, H. HARA ( <i>Gifu, Japan</i> ) .....	3247
Expression of Periostin in Mammary Cancer Cells of Female Dogs. P. BORECKA, R. CIAPUTA, I. JANUS, J. BUBAK, A. PIOTROWSKA, K. RATAJCZAK-WIELGOMAS, M. PODHORSKA-OKOLÓW, P. DZIĘGIEL, M. NOWAK ( <i>Wroclaw, Poland</i> ).....	3255
Comparison of TMA Technique and Routine Whole Slide Analysis in Evaluation of Proliferative Markers Expression in Laryngeal Squamous Cell Cancer. U. CIESIELSKA, A. PIOTROWSKA, C. KOBIERZYCKI, W. PASTUSZEWSKI, M. PODHORSKA-OKOLOW, P. DZIEGIEL, K. NOWINSKA ( <i>Wroclaw, Poland; Namsos, Norway</i> ) .....	3263
Cryopreservation of Biologically Functional Submandibular Gland Rudiments from Fetal Mice. K. ADACHI, Y. OHNO, K. SATOH, A. SHITARA, Y. MURAMATHU, M. KASHIMATA ( <i>Gifu, Japan</i> ) ....	3271
A Role for Angiogenesis in Canine Cutaneous Histiocytoma Regression: Insights into an Old Clinical Enigma. D. COSTA, R. FERREIRA, J. PRADA, F.L. QUEIROGA, P. RODRIGUES, F. SILVA, I. PIRES ( <i>Vila Real; Porto, Portugal</i> ) .....	3279
Cocaine Reduces Ciliary Beat Frequency of Human Nasal Epithelial Cells. A. NASTEV, J.U. SOMMER, W. BEHR, B.A. STUCK, C.E. MUELLER, A. SCHELL, B. KRAMER, D. HAEUSSLER, K. HOERMANN, R. BIRK ( <i>Marburg; Wuppertal; Heidelberg, Germany</i> ).....	3285
Does the Addition of Abiraterone to Castration Affect the Reduction in Bone Mineral Density? S. NAKAJIMA, T. INOUE, M. HUANG, K. TAKAYAMA, S. KASHIMA, R. YAMAMOTO, A. KOIZUMI, T. NARA, K. NUMAKURA, M. SAITO, S. NARITA, M. MIURA, S. SATOH, T. HABUCHI ( <i>Akita, Japan</i> ).....	3291
Additive Effects of Zinc Chloride on the Suppression of Hepatitis A Virus Replication by Interferon in Human Hepatoma Huh7 Cells. T. KANDA, R. SASAKI, R. MASUZAKI, H. TAKAHASHI, M. FUJISAWA, N. MATSUMOTO, H. OKAMOTO, M. MORIYAMA ( <i>Tokyo; Tochigi-ken, Japan</i> ) .....	3301
Association of Genetic Polymorphisms With Hepatitis C Virus-related Liver Cirrhosis in Japan. S. KAMIMURA, A. TAMURA, T. ISHII, T. KANDA, M. MORIYAMA ( <i>Tokyo, Japan</i> ) .....	3309
The MSC-MCF-7 Duet Playing Tumor Vasculogenesis and Angiogenesis onto the Chick Embryo Chorioallantoic Membrane. Ș. COMȘA, A.-R. CEAUȘU, R. POPESCU, S. SBRB, A.-M. CÎMPEAN, M. RAICA ( <i>Timișoara, Romania</i> ) .....	3315

Specialized Histological and Histomorphometrical Analytical Methods for Biocompatibility Testing of Biomaterials for Maxillofacial Surgery in (Pre-) Clinical Studies. C. LINDNER, A. PRÖHL, M. ABELS, T. LÖFFLER, M. BATINIC, O. JUNG, M. BARBECK ( <i>Berlin; Rostock, Germany</i> ).....	3137
<i>Experimental Studies</i>	
Sutureless Surgical Orthotopic Implantation Technique of Primary and Metastatic Cancer in the Liver of Mouse Models. H. NISHINO, H.M. HOLLANDSWORTH, N. SUGISAWA, J. YAMAMOTO, Y. TASHIRO, S. INUBUSHI, K. HAMADA, Y. SUN, H. LIM, S. AMIRFAKHRI, F. FILEMONI, R.M. HOFFMAN, M. BOUVET ( <i>San Diego, CA, USA; Kyoto, Japan</i> ).....	3153
Ligation Method to Specifically Label a Liver Segment With Indocyanine Green in an Orthotopic Nude-Mouse Liver-Metastasis Model. H. NISHINO, H.M. HOLLANDSWORTH, Y. TASHIRO, J. YAMAMOTO, S. AMIRFAKHRI, F. FILEMONI, N. SUGISAWA, R.M. HOFFMAN, M. BOUVET ( <i>San Diego, CA, USA; Kyoto, Japan</i> ).....	3159
Response of Triple-negative Breast Cancer Liver Metastasis to Oral Recombinant Methioninase in a Patient-derived Orthotopic Xenograft (PDOX) Model. H.I. LIM, J. YAMAMOTO, Q. HAN, Y. SUN, H. NISHINO, Y. TASHIRO, N. SUGISAWA, Y. TAN, H.J. CHOI, S.J. NAM, M. BOUVET, R.M. HOFFMAN ( <i>San Diego, CA, USA; Jinju; Changwon; Seoul, Republic of Korea</i> ).....	3163
Clinical Significance of Tumor and Immune Cell PD-L1 Expression in Gastric Adenocarcinoma. D.H. KIM, G.E. BAE, K.S. SUH, D. RYUMAN, K.S. SONG, J.S. KIM, S.-I. LEE, M.-K. YEO ( <i>Daejeon, Republic of Korea</i> ).....	3171
Significant Association of MMP2 Promoter Genotypes to Asthma Susceptibility in Taiwan. L.-H. CHEN, K.-L. CHIU, T.-C. HSIA, Y.-H. LEE, T.-C. SHEN, C.-H. LI, Y.-C. SHEN, W.-S. CHANG, C.-W. TSAI, D.-T. BAU ( <i>Taichung; Hualien, Taiwan, ROC</i> ).....	3181
A Novel Lipofuscin-detecting Marker of Senescence Relates With Hypoxia, Dysregulated Autophagy and With Poor Prognosis in Non-small-cell-lung Cancer. A. GIATROMANOLAKI, M. KOUROUPI, K. BALASKA, M.I. KOUKOURAKIS ( <i>Alexandroupolis, Greece</i> ).....	3187
The Effect of Gemcitabine on Cell Cycle Arrest and microRNA Signatures in Pancreatic Cancer Cells. D. NAMIMA, S. FUJIHARA, H. IWAMA, K. FUJITA, T. MATSUI, M. NAKAHARA, M. OKAMURA, M. HIRATA, T. KONO, N. FUJITA, H. YAMANA, K. KATO, H. KAMADA, A. MORISHITA, H. KOBARA, K. TSUTSUI, T. MASAKI ( <i>Kagawa, Japan</i> ).....	3195
Continuity of Tumor Microenvironmental Suppression in AOM/DSS Mice by Fucoxanthin May Be Able to Track With Salivary Glycine. M. TERASAKI, R. KIMURA, A. KUBOTA, H. KOJIMA, T. TANAKA, H. MAEDA, K. MIYASHITA, M. MUTOH ( <i>Hokkaido; Gifu; Aomori; Tokyo, Japan</i> ).....	3205
Therapeutic Efficacy and Inhibitory Mechanism of Regorafenib Combined With Radiation in Colorectal Cancer. Y.-C. LIU, I.-T. CHIANG, J.-G. CHUNG, J.-H. HSIEH, C.-H. CHIANG, M.-C. WENG, F.-T. HSU, Y.-H. LEE, C.-S. CHANG, S.-S. LIN ( <i>Changhua; Taichung; Yilan; New Taipei; Taipei; Taoyuan, Taiwan, ROC; Houston, TX, USA</i> ).....	3217
A Non-invasive Imageable GFP-expressing Mouse Model of Orthotopic Human Bladder Cancer. Y. SUN, H. NISHINO, M. ZHAO, K. MIYAKE, N. SUGISAWA, J. YAMAMOTO, Y. TASHIRO, S. INUBUSHI, K. HAMADA, G. ZHU, H. LIM, R.M. HOFFMAN ( <i>San Diego, CA, USA</i> ).....	3225