

Instructions for Authors 2020

General Policy. IN VIVO is a multidisciplinary journal designed to bring together original high quality works and reviews on experimental and clinical biomedical research within the frames of human physiology, pathology and disease management. The topics of IN VIVO include: 1. Experimental development and application of new diagnostic and therapeutic procedures; 2. Pharmacological and toxicological evaluation of new drugs, drug combinations and drug delivery systems; 3. Clinical trials; 4. Development and characterization of models of biomedical research; 5. Cancer diagnosis and treatment; 6. Immunotherapy and vaccines; 7. Radiotherapy, Imaging; 8. Tissue engineering, Regenerative medicine; 9. Carcinogenesis; Each article should include a concrete conclusion constituting of a “new piece of knowledge” backed up by scientific evidence. 10. Retrospective studies and case reports. The principal aim of IN VIVO is to provide prompt online publication for accepted articles, generally within 1-2 months from final acceptance.

Manuscripts will be accepted on the understanding that they report original unpublished works that are not under consideration for publication by another journal, and that they will not be published again in the same form. All authors should sign a submission letter confirming the approval of their article contents. All material submitted to IN VIVO will be subject to peer-review, when appropriate, by two members of the Editorial Board. All manuscripts submitted to IN VIVO are urgently treated with absolute confidence, with access restricted to the Managing Editor, the journal’s secretary, the reviewers and the printers. The Editors reserve the right to improve manuscripts on grammar and style.

The use of animals in biomedical research should take place under careful supervision of a person adequately trained in this field and the animals must be treated humanely at all times. Such research should adhere to the Guiding Principles in the Care and Use of Animals approved by the Council of the American Physiological Society.

The Editors and Publishers of IN VIVO accept no responsibility for the contents and opinions expressed by the contributors. Authors should warrant due diligence in the creation and issuance of their work.

Open Access Policy. IN VIVO appears bimonthly as an online-only open access journal through the Stanford University HighWire Press. Upon acceptance, Authors will be asked to pay an online publication fee of USD 700.00 (effective January 1, 2020) for articles up to 8 online pages (including figures and tables). Each additional excess page will be charged USD 60.00. Color will not be charged. Authors from developing countries may apply for a 25% discount after the acceptance of their paper. IN VIVO online will keep the volume and issue numbers, as well as page numbering.

Copyright. Authors retain copyright. The unrestricted non-commercial use, distribution and reproduction in any medium of IN VIVO articles for academic reasons is allowed, provided that the original work is properly cited. The Authors grant the permanent right to the publisher to use any articles published in this journal without any restriction, including academic advertising purposes. PDF, XML and html files of all articles published in IN VIVO are the property of the publisher.

Format. Two types of papers may be submitted: (i) Full papers containing completed original work, and (ii) review articles concerning fields of recognisable progress. Papers should contain all essential data in order to make the presentation clear. Papers should be written in clear, concise English. Spelling should follow that given in the “Shorter Oxford English Dictionary”.

Manuscripts. Manuscripts should be divided into the following sections: (a) *First page* including the title of the presented work [not exceeding fifteen (15) words], full names and full postal addresses of all Authors, name of the Author to whom proofs are to be sent, key words, an abbreviated running title, an indication “review”, “clinical”, “epidemiological”, or “experimental” study, and the date of submission. (Note: The order of the Authors is not necessarily indicative of their contribution to the work. Authors may note their individual contribution(s) in the appropriate section(s) of the presented work); (b) *Abstract* not exceeding 150 words, organized according to the following headings: Background/Aim – Materials and Methods/Patients and Methods – Results – Conclusion; (c) *Introduction*; (d) *Materials and Methods/Patients and Methods*; (e) *Results*; (f) *Discussion*; (g) *Conflicts of Interest*; (h) *Authors’ contributions*; (i) *Acknowledgements*; (j) *References*. All pages must be numbered consecutively. Footnotes should be avoided. Review articles may follow a different style according to the subject matter and the Author’s opinion. Review articles should not exceed 35 pages (approximately 250 words per double-spaced typed page) including all tables, figures, and references.

Figures. All figures should appear **at the end** of the submitted document file. Once a manuscript is accepted all figures and graphs should be submitted separately in either jpg, tiff or pdf format and at a minimum resolution of 300 dpi. Graphs must be submitted as pictures made from drawings and must not require any artwork, typesetting, or size modifications. Symbols, numbering and lettering should be clearly legible. The number and top of each figure must be indicated. Pages that include color figures are not subject to color charges.

Tables. All tables should appear **at the end** of the submitted document file. Once a manuscript is accepted, each table should be submitted separately, typed double-spaced. Tables should be numbered with Roman numerals and should include a short title.

References. Authors must assume responsibility for the accuracy of the references used. Citations for the reference sections of submitted works should follow the form below and must be numbered consecutively. In the text, references should be cited by number in parenthesis. Examples: 1 Kenyon J, Liu W and Dalglish A: Report of objective clinical responses of cancer patients to pharmaceutical-grade synthetic cannabidiol. *Anticancer Res* 38(10): 5831-5835, 2018. PMID: 30275207. DOI: 10.21873/anticancer.12924. (PMIDs and DOIs only if applicable). 2 McGuire WL and Chamnes GC: Studies on the oestrogen receptor in breast cancer. In: *Receptors for Reproductive Hormones*. O' Malley BW, Chamnes GC (eds.). New York, Plenum Publ Corp., pp 113-136, 1973. 3 Global Health Estimates 2015: Disease Burden by Cause, Age, Sex, by Country and by Region, 2000-2015. Geneva, World Health Organisation, 2016. Available at http://www.who.int/healthinfo/global_burden_disease/estimates/en/index2.html. Last accessed on 3rd April 2018. (The web address should link directly to the cited information and not to a generic webpage).

Nomenclature and Abbreviations. Nomenclature should follow that given in "Chemical Abstracts", "Index Medicus", "Merck Index", "IUPAC -IUB", "Bergey's Manual of Determinative Bacteriology", The CBE Manual for Authors, Editors and Publishers (6th edition, 1994), and MIAME Standard for Microarray Data. Human gene symbols may be obtained from the HUGO Gene Nomenclature Committee (HGNC) (<http://www.gene.ucl.ac.uk/>). Approved mouse nomenclature may be obtained from <http://www.informatics.jax.org/>. Standard abbreviations are preferable. If a new abbreviation is used, it must be defined on first usage.

Clinical Trials. Authors of manuscripts describing clinical trials should provide the appropriate clinical trial number in the correct format in the text.

For International Standard Randomised Controlled Trials (ISRCTN) Registry (a not-for-profit organization whose registry is administered by Current Controlled Trials Ltd.) the unique number must be provided in this format: ISRCTNXXXXXXXX (where XXXXXXXX represents the unique number, always prefixed by "ISRCTN"). Please note that there is no space between the prefix "ISRCTN" and the number. Example: ISRCTN47956475.

For Clinicaltrials.gov registered trials, the unique number must be provided in this format: NCTXXXXXXXX (where XXXXXXXX represents the unique number, always prefixed by "NCT"). Please note that there is no space between the prefix "NCT" and the number. Example: NCT00001789.

Ethical Policies and Standards. IN VIVO agrees with and follows the "Uniform Requirements for Manuscripts Submitted to Biomedical Journals" established by the International Committee of Medical Journal Editors in 1978 and updated in October 2001 (www.icmje.org). Microarray data analysis should comply with the "Minimum Information About Microarray Experiments (MIAME) standard". Specific guidelines are provided at the "Microarray Gene Expression Data Society" (MGED) website. Presentation of genome sequences should follow the guidelines of the NHGRI Policy on Release of Human Genomic Sequence Data. Research involving human beings must adhere to the principles of the Declaration of Helsinki and Title 45, U.S. Code of Federal Regulations, Part 46, Protection of Human Subjects, effective December 13, 2001. Research involving animals must adhere to the Guiding Principles in the Care and Use of Animals approved by the Council of the American Physiological Society. The use of animals in biomedical research should be under the careful supervision of a person adequately trained in this field and the animals must be treated humanely at all times. Research involving the use of human foetuses, foetal tissue, embryos and embryonic cells should adhere to the U.S. Public Law 103-41, effective December 13, 2001.

Submission of Manuscripts. Please follow the Instructions for Authors regarding the format of your manuscript and references. Manuscripts must be submitted only through our online submission system at: <http://www.iar-submissions.com/login.html> In case a submission is incomplete, the corresponding Author will be notified accordingly. Questions regarding difficulties in using the online submission system should be addressed to: email: journals@iar-anticancer.org

Galley Proofs. Unless otherwise indicated, galley proofs will be sent to the corresponding Author of the submission. Corrections of galley proofs should be limited to typographical errors. Galley proofs should be returned corrected to the Editorial Office by email within two days.

Specific information and additional instructions for Authors

1. In Vivo (IV) will consider the publication of conference proceedings and/or abstracts provided that the material submitted fulfils the quality requirements and instructions of the journal, following the regular review process by two suitable referees.
2. An acknowledgement of receipt, including the article number, title and date of receipt is sent to the corresponding author of each manuscript upon receipt. If this receipt is not received within 20 days from submission, the author should call or write to the Editorial Office to ensure that the manuscript (or the receipt) was not lost in the mail.

3. Each manuscript submitted to IV is sent for peer-review in confidence to two suitable referees with the request to return the manuscript with their comments to the Editorial Office within 12 days from receipt. If reviewers need a longer time or wish to send the manuscript to another expert, the manuscript may be returned to the Editorial Office with a delay. All manuscripts submitted to IV, are treated in confidence, without access to any person other than the Managing Editor, the journal's secretary, the reviewers and the printers.
4. All accepted manuscripts are carefully corrected in style and language, if necessary, to make presentation clear. (There is no fee for this service). Every effort is made (a) to maintain the personal style of the author's writing and (b) to avoid change of meaning. Authors will be requested to examine carefully manuscripts which have undergone language correction at the pre-proof or proof stage.
5. Authors should pay attention to the following points when writing an article for IN VIVO:
 - The Instructions to Authors must be followed in every detail.
 - The presentation of the experimental methods should be clear and complete in every detail facilitating reproducibility by other scientists.
 - The presentation of results should be simple and straightforward in style. Results and discussion should not be combined into one section, unless the paper is short.
 - Results given in figures should not be repeated in tables.
 - Figures (graphs or photographs) should be prepared at a width of 8 or 17 cm with legible numbers and lettering.
 - Photographs should be clear with high contrast, presenting the actual observation described in the legend and in the text. Each legend should provide a complete description, being self-explanatory, including technique of preparation, information about the specimen and magnification.
 - Statistical analysis should be elaborated wherever it is necessary. Simplification of presentation by giving only numerical or % values should be avoided.
 - Fidelity of the techniques and reproducibility of the results, should be points of particular importance in the discussion section. Authors are advised to check the correctness of their methods and results carefully before writing an article. Probable or dubious explanations should be avoided.
 - Authors should not cite results submitted for publication in the reference section. Such results may be described briefly in the text with a note in parenthesis (submitted for publication by... authors, year).
 - References. Each article should address, list and discuss the entire spectrum of current publications relevant to its field.
 - By following these instructions, Authors will facilitate a more rapid review and processing of their manuscripts and will provide the readers with concise and useful papers.
6. Following review and acceptance, a manuscript is examined in language and style, and galley proofs are rapidly prepared. Second proofs are not sent unless required.
7. Authors should correct their galley proofs very carefully and preferably twice. An additional correction by a colleague always proves to be useful. Particular attention should be paid to chemical formulas, mathematical equations, symbols, medical nomenclature etc. Any system of correction marks can be used in a clear manner, preferably with a red pen. Additions or clarifications are allowed provided that they improve the presentation but do not bring new results (no fee).
8. Articles submitted to IN VIVO may be rejected without review if:
 - they do not fall within the journal's policy.
 - they do not follow the instructions for authors.
 - language is unclear.
 - results are not sufficient to support a final conclusion.
 - results are not objectively based on valid experiments.
 - they repeat results already published by the same or other authors before the submission to IV.
 - plagiarism is detected by plagiarism screening services.(Rejection rate (2016): 59%).
9. Authors who wish to prepare a review should contact the Managing Editor of the journal in order to get confirmation of interest in the particular topic of the review and to allow programming of space availability. The expression of interest by the Managing Editor does not necessarily imply acceptance of the review by the journal.
10. Authors may inquire information about the status of their manuscript(s) by calling the Editorial Office at +30-22950-53389, Monday to Friday 9.00-16.00 (Athens time), or by sending an e-mail to journals@iiar-anticancer.org.
11. Authors who wish to edit a special issue on a particular topic should contact the Managing Editor.
(This text is a combination of advice and suggestions contributed by Editors, Authors, Readers and the Managing Editor of IV).

ANTICANCER RESEARCH

International Journal of Cancer Research and Treatment

ISSN: 0250-7005

Volume 40, Number 1, January 2020

Contents

Review

Current Treatment of Colorectal Liver Metastasis as a Chronic Disease. N.M. DORR, M. BARTELS, M.H. MORGUL (*Leipzig; Münster, Germany*) 1

Experimental Studies

SAHA and EGCG Promote Apoptosis in Triple-negative Breast Cancer Cells, Possibly Through the Modulation of cIAP2. K.L. STEED, H.R. JORDAN, T.O. TOLLEFSBOL (*Birmingham, AL, USA*) 9

Genetic Polymorphisms in IL-10 Promoter Are Associated With Smoking and Prostate Cancer Risk in African Americans. M. ABBAS, T. MASSON, A. BRAD, M. KIBRAWJESHI, V. APPREY, Y. KANAAN, B. WILSON, G. DUNSTON, L. RICKS-SANTI, H. BRIM (*Washington, DC; Silver Spring, MD; Hanapee, VA, USA*) 27

High Expression of c-Met, PKC λ and ALDH1A3 Predicts a Poor Prognosis in Late-stage Breast Cancer. H. MOTOMURA, Y. NOZAKI, C. ONAGA, A. OZAKI, S. TAMORI, T.-A. SHIINA, S. KANAI, C. OHIRA, Y. HARA, Y. HARADA, R. TAKASAWA, T. HANAWA, S.-I. TANUMA, Y. MANO, T. SATO, K. SATO, K. AKIMOTO (*Chiba, Japan*) 35

Targeting Fibroblast Growth Factor Receptor (FGFR) and Phosphoinositide 3-kinase (PI3K) Signaling Pathways in Medulloblastoma Cell Lines. S. HOLZHAUSER, M. LUKOSEVICIUTE, T. ANDONOVA, R.G. URSU, T. DALIANIS, M. WICKSTRÖM, O.N. KOSTOPOULOU (*Stockholm; Sueden; Iasi, Romania*) 53

Cisplatin Induced the Expression of SEI1 (TRIP-Br1) Oncogene in Human Oral Squamous Cancer Cell Lines. J.LI, Z. VANGUNDY, M. POI (*Columbus, OH, USA*) 67

Contents continued on the back cover

ISSN (online): 1791-7530 / ISSN (print): 0250-7005

General Policy

- **ANTICANCER RESEARCH** is an independent international forum devoted to the rapid publication of original high quality articles and reviews on all aspects of experimental and clinical oncology. Prompt evaluation of all submitted articles in confidence and rapid publication within 1-2 months from acceptance are guaranteed.
- **ANTICANCER RESEARCH** is published monthly by the International Institute of Anticancer Research and is available online with Stanford University HighWire Press.
- **Editorial Office:** International Institute of Anticancer Research, 1st km Kapandritiou-Kalamou Rd., P.O. Box 22, Kapandriti, Attiki 19014, Greece. Tel: +30 22950 52945, Fax: +30 22950 53389.

U.S. Branch: Anticancer Research Inc., USA, 111 Bay Avenue, Highlands, NJ, USA.

- **E-mail:** journals@iia-anticancer.org; IIA WEBSITES: www.iia-anticancer.org and www.iiajournals.org

● Selection of Recent Articles

SAHA and EGCG Promote Apoptosis in Triple-negative Breast Cancer Cells, Possibly Through the Modulation of cIAP2. K.L. STEED, H.R. JORDAN, T.O. TOLLEFSBOL (*Birmingham, AL, USA*)

Targeting Fibroblast Growth Factor Receptor (FGFR) and Phosphoinositide 3-kinase (PI3K) Signaling Pathways in Medulloblastoma Cell Lines. S. HOLZHAUSER, M. LUKOSEVICIUTE, T. ANDONOVA, R.G. URSU, T. DALIANIS, M. WICKSTRÖM, O.N. KOSTOPOULOU (*Stockholm, Sweden; Iasi, Romania*)

Quantitative Structure–Cytotoxicity Relationship of 2-Arylazolychromones and 2-Triazolylchromones. J. NAGAI, H. SHI, N. SEZAKI, N. YOSHIDA, K. BANDOW, Y. UESAWA, H. SAKAGAMI, M. TOMOMURA, A. TOMOMURA, K. TAKAO, Y. SUGITA (*Tokyo; Sakado; Urayasu, Japan; Shanghai, PR China*)

High Expression of c-Met, PKC λ and ALDH1A3 Predicts a Poor Prognosis in Late-stage Breast Cancer. H. MOTOMURA, Y. NOZAKI, C. ONAGA, A. OZAKI, S. TAMORI, T.-A. SHIINA, S. KANAI, C. OHIRA, Y. HARA, Y. HARADA, R. TAKASAWA, T. HANAWA, S.-I. TANUMA, Y. MANO, T. SATO, K. SATO, K. AKIMOTO (*Chiba, Japan*)

Chronic Expanding Hematoma with a t(11;19)(q13;q13) Chromosomal Translocation. I. PANAGOPOULOS, L. GORUNOVA, I. KOSTOLOMOV, I. LOBMAIER, B. BJERKEHAGEN, S. HEIM (*Oslo, Norway*)

PGC-1 α Regulates Cell Proliferation and Invasion via AKT/GSK-3 β /catenin Pathway in Human Colorectal Cancer SW620 and SW480 cells. S.-H. YUN, J.-I. PARK (*Busan, Republic of Korea*)

Symptomatic Mandibular Fibrous Dysplasia With Concurrent Triple X- and Premutation Stage Fragile-X-Syndrome: Case Report With Short Literature Survey. R.E. FRIEDRICH, F.K. KOHLRUSCH, A.M. LUEBKE (*Hamburg, Germany*)

Cisplatin Induced the Expression of SEI1 (TRIP-Br1) Oncogene in Human Oral Squamous Cancer Cell Lines. J. LI, Z. VANGUNDY, M. POI (*Columbus, OH, USA*)

High Rate of Detection of Human ESPL1–HBV S Fusion Gene in Patients With HBV-related Liver Cancer: A Chinese Case–Control Study. B. HU, W. HUANG, R. WANG, W. ZANG, M. SU, H. LI, H. WANG, B. CAO, D. DENG, Q.Q. LI, J. JIANG (*Nanning; Hefei, PR China; Bethesda, MD, USA*)

Brief Pain Inventory (BPI) Health Survey After Midline Laparotomy With the Rectus Sheath Block (RSB) Analgesia: A Randomised Trial of Patients With Cancer and Benign Disease. V. KUOSMANEN, M. RUOTTINEN, D. RAHKOLA, I. SAIMANEN, V. KAARONEN, T. SELANDER, M. PURDY, H. KOKKI, M. KOKKI, M. ESKELINEN (*Kuopio, Finland*)

Current Treatment of Colorectal Liver Metastasis as a Chronic Disease. N.M. DORR, M. BARTELS, M.H. MORGUL (*Leipzig; Münster, Germany*)

Review of Recent Advances in Understanding the Role of Vitamin D Role in Reducing Cancer Risk: Breast, Colorectal, Prostate, and Overall Cancer. W.B. GRANT (*San Francisco, CA, USA*)

Chemoprevention of Prostate Cancer by Natural Agents: Evidence from Molecular and Epidemiological Studies. K. MOKBEL, U. WAZIR, K. MOKBEL (*London, UK*)

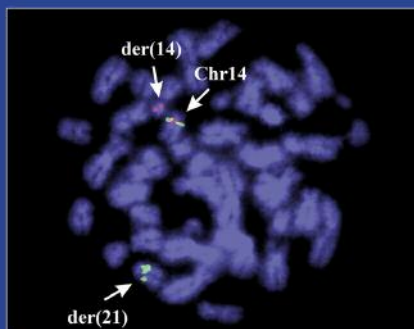
Adherence to Adjuvant Aromatase Inhibitor Therapy Among Postmenopausal Hispanic/Latino Women With Breast Cancer. A. PHILIPOVSKIY, A. CAMPBELL, R. HEYDARIAN, B. CASTILLO, A.K. DWIVEDI, R. MCCALLUM, R. AGUILERA, S. GAUR, N. ZEINA (*El Paso, TX; Weston, FL, USA*)

Treatment Algorithm for Patients With Gastric Adenocarcinoma: An Austrian Consensus on Systemic Therapy. E. WÖLL, W. EISTERER, A. GERGER, T. KÜHR, G.W. PRAGER, H. RUMPOLD, H. ULRICH-PUR, U. VOGL, T. WINDER, L. WEISS, R. GREIL (*Zams; Klagenfurt; Graz; Wels; Vienna; Feldkirch; Salzburg, Austria*)

CANCER GENOMICS & PROTEOMICS

Volume 17, Number 1, January-February 2020

ISSN (online): 1790-6245



Published by the International Institute of Anticancer Research

Online ISSN: 1790-6245

General Policy

- **CANCER GENOMICS & PROTEOMICS (CGP)** welcomes submissions of original high quality articles and reviews on all aspects of the application of genomic and proteomic technologies to experimental and clinical cancer research. The journal's scientific spectrum includes: (a) molecular causes of carcinogenesis, cancer progression and metastasis; (b) structural and functional aspects of genes in the cancer cell; (c) advances in genomic and proteomic technologies applicable to cancer research; (d) anticancer drug design and drug development. A main aim of CGP is to ensure the prompt and confidential review, and rapid publication of original works and reviews, generally within 1-3 months from submission.
- CGP is published bimonthly by the **International Institute of Anticancer Research (IIAR)** and is available online only and open access with **Stanford University HighWire Press**. For more information please visit our website www.cgp.iiarjournals.org.
- **Editorial Office:** International Institute of Anticancer Research, 1st km Kapandritiou-Kalamou Rd., P.O. Box 22, Kapandriti, Attiki 19014, Greece. Tel: +30 22950 52945, Fax: +30 22950 53389.
U.S. Branch: Anticancer Research Inc., USA, 111 Bay Avenue, Highlands, NJ, USA.
- **E-mail:** journals@iiar-anticancer.org; IIAR WEBSITES: www.iiar-anticancer.org and www.iiarjournals.org

● Selection of Recent Articles

Duplex DNA from Sites of Helicase-Polymerase Uncoupling Links Non-B DNA Structure Formation to Replicative Stress. C. AMPARO, J. CLARK, V. BEDELL, J.L. MURATA-COLLINS, M. MARTELLA, F. PICHIORRI, E.F. WARNER, M. ABDELHAMID, Z.A.E. WALLER, S.S. SMITH (*Duarte, CA, USA; Norwich, UK*)

Pazopanib Inhibits Tumor Growth, Lymph-node Metastasis and Lymphangiogenesis of an Orthotopic Mouse of Colorectal Cancer. G. ZHU, M. ZHAO, Q. HAN, Y. TAN, Y. SUN, M. BOUVET, S.R. SINGH, J. YE, R.M. HOFFMAN (*San Diego, CA; Frederick, MD, USA; Fuzhou, PR China*)

KIF15 Expression in Tumor-associated Monocytes Is a Prognostic Biomarker in Hepatocellular Carcinoma. A. KITAGAWA, T. MASUDA, J. TAKAHASHI, T. TOBO, M. NODA, Y. KURODA, Q. HU, Y. KOUYAMA, Y. KOBAYASHI, S. KURAMITSU, K. SATO, A. FUJII, Y. YOSHIKAWA, H. WAKIYAMA, D. SHIMIZU, Y. TSURUDA, H. EGUCHI, Y. DOKI, M. MORI, K. MIMORI (*Oita; Osaka; Fukuoka, Japan*)

Chromosome Translocation t(14;21)(q11;q22) Activates Both OLIG1 and OLIG2 in Pediatric T-cell Lymphoblastic Malignancies and May Signify Adverse Prognosis. I. PANAGOPOULOS, L. GORUNOVA, I.M. RINVOLL JOHANNSDOTTIR, K. ANDERSEN, A. HOLTH, K. BEISKE, S. HEIM (*Oslo, Norway*)

Whole Transcriptomic Analysis of Apigenin-mediated Influence on TNF α Immuno-activated MDA-MB-231 Breast Cancer Cells. D. BAUER, E. MAZZIO, K.F.A. SOLIMAN (*Tallahassee, FL, USA*)

Significant Association Between the MiR146a Genotypes and Susceptibility to Childhood Acute Lymphoblastic Leukemia in Taiwan. J.-S. PEI, W.-S. CHANG, P.-C. HSU, C.-C. CHEN, Y.-T. CHIN, T.-L. HUANG, Y.-N. HSU, C.-C. KUO, Y.-C. WANG, C.-W. TSAI, C.-L. GONG, D.-T. BAU (*Taoyuan; Taichung, Taiwan, ROC*)

Clonal Relationship Between Lichen Sclerosus, Differentiated Vulvar Intraepithelial Neoplasia and Non HPV-related Vulvar Squamous Cell Carcinoma. A.-F.W. POUWER, L.C.G. VAN DEN EINDEN, M. VAN DER LINDEN, J.Y. HEHIR-KWA, J. YU, K.M. HENDRIKS, E.J. KAMPING, A. EIJKELENBOOM, L.F.A.G. MASSUGER, J. BULTEN, A.A.G. VAN TILBORG, J.A. DE HULLU, R.P. KUIPER (*Nijmegen; Utrecht, the Netherlands*)

Identification of Novel Prognosis and Prediction Markers in Advanced Prostate Cancer Tissues Based on Quantitative Proteomics. O.K. KWON, Y.-S. HA, A.Y. NA, S.Y. CHUN, T.G. KWON, J.N. LEE, S. LEE (*Daegu, Republic of Korea*)

BRD4-Regulated Molecular Targets in Mantle Cell Lymphoma: Insights into Targeted Therapeutic Approach. T. TSUKAMOTO, S. NAKAHATA, R. SATO, A. KANAI, M. NAKANO, Y. CHINEN, S. MAEGAWA-MATSUI, Y. MATSUMURA-KIMOTO, T. TAKIMOTO-SHIMOMURA, Y. MIZUNO, S. KUWAHARA-OTA, Y. KAWAJI, M. TANIWAKI, T. INABA, K. TASHIRO, K. MORISHITA, J. KURODA (*Kyoto; Miyazaki; Hiroshima, Japan*)

MicroRNAs Involved in Metastasis of Hepatocellular Carcinoma: Target Candidates, Functionality and Efficacy in Animal Models and Prognostic Relevance. U.H. WEIDLE, D. SCHMID, F. BIRZELE, U. BRINKMANN (*Penzberg, Germany; Basel, Switzerland*)

Increased Expression of Gremlin1 Promotes Proliferation and Epithelial Mesenchymal Transition in Gastric Cancer Cells and Correlates With Poor Prognosis of Patients With Gastric Cancer. Z. SUN, S. CAI, C. LIU, Y. CUI, J. JI, W.G. JIANG, L. YE (*Cardiff, UK; Beijing, PR China*)

Effect of Lockdown in Surgical Emergency Accesses: Experience of a COVID-19 Hospital. G. VANNI, J.M. LEGRAMANTE, M. PELLICCIARO, G. DE CAROLIS, M. COTESTA, M. MATERAZZO, C. BUONOMO, A. FARINACCIO, F. SANTORI, F. SARACENO, B. IELPO, F. AIELLO, C. PAGANELLI, M. GRANDE, G. DE ANDREIS, M. CHIOCCHI, L. PALOMBI, O.C. BUONOMO (<i>Rome, Italy; Barcelona, Spain</i>)	3033
Preliminary Data of a Quantitative Point of Care Test for SARS-CoV-2 Antibodies From Greece. P.C. FRAGKOU, V. PAPAEVANGELOU, A. ANTONIADOU, D. KAVVATHA, A. PLOUSSI, N. PANTAZIS, T. SIRMPILANTZE, C. PSARRAKIS, S.A. POURNARAS, S. TSIODRAS, A. KELEKIS (<i>Athens, Greece</i>)	3039
Lockdown of Breast Cancer Screening for COVID-19: Possible Scenario. G. VANNI, M. PELLICCIARO, M. MATERAZZO, V. BRUNO, C. OLDANI, C.A. PISTOLESE, C. BUONOMO, J. CASPI, P. GUALTIERI, A. CHIARAVALLOTI, L. PALOMBI, E. PICCIONE, O.C. BUONOMO (<i>Rome; Viterbo; Pozzilli, Italy</i>)	3047
Erratum	3055

A Case Series of BCOR Sarcomas With a New Splice Variant of <i>BCOR/CCNB3</i> Fusion Gene. A. KYRIAZOGLU, N. TOURKANTONI, M. LIONTOS, F. ZAGOURI, L. MAHAIRA, A. PAPAKOSTA, D. MICHALI, A. PATERELI, K. STEFANAKI, V. TZOTZOLA, E. SKOURA, M. BAKA, S. POLYCHRONOPOULOU, A. KATTAMIS, E. DIMITRIADIS (<i>Athens, Greece</i>).....	2947
Combining Radiomics and Blood Test Biomarkers to Predict the Response of Locally Advanced Rectal Cancer to Chemoradiation. S.H. JEON, C. SONG, E.K. CHIE, B. KIM, Y.H. KIM, W. CHANG, Y.J. LEE, J.-H. CHUNG, J.B. CHUNG, K.-W. LEE, S.-B. KANG, J.-S. KIM (<i>Daejeon; Seongnam; Seoul; Yongin, Republic of Korea</i>)	2955
Investigation of the Efficacy and Safety of Nivolumab in Recurrent and Metastatic Nasopharyngeal Carcinoma. H. SATO, C. FUSHIMI, T. OKADA, T. MATSUKI, T. KONDO, G. OMURA, K. MIURA, T. YAMASHITA, I. OKAMOTO, K. TSUKAHARA (<i>Tokyo; Kanagawa, Japan</i>)	2967
Identification of Patients at High Risk for Postsurgical Hypoparathyroidism. K. KAKAVA, S. TOURNIS, K. MAKRIS, G. PAPADAKIS, E. KASSI, I. DONTAS, T. KARATZAS (<i>Pireaus; Athens, Greece; Biel/Bienne, Switzerland</i>).....	2973
Prognostic Utility of Apical Lymph Node Metastasis in Patients With Left-sided Colorectal Cancer. L. WANG, Y. HIRANO, G. HENG, T. ISHII, H. KONDO, K. HARA, N. OBARA, M. ASARI, S. YAMAGUCHI (<i>Hidaka, Japan</i>)	2981
Stereotactic Body Radiotherapy for Pulmonary Oligometastasis from Colorectal Cancer. N. KOBAYASHI, T. ABE, S.-E. NODA, Y. KUMAZAKI, R. HIRAI, M. IGARI, T. AOSHIKA, S. SAITO, Y. RYUNO, S. KATO (<i>Saitama; Gunma, Japan</i>).....	2991
Association Between the Efficacy of Pembrolizumab and Low <i>STK11/LKB1</i> Expression in High-PD-L1-expressing Non-small-cell Lung Cancer. T. HASEGAWA, N. YANAGITANI, H. NINOMIYA, H. SAKAMOTO, T. TOZUKA, H. YOSHIDA, Y. AMINO, S. UEMATSU, T. YOSHIZAWA, R. ARIYASU, K. UCHIBORI, S. KITAZONO, A. HORIIKE, M. NISHIO (<i>Tokyo, Japan</i>).....	2997
TGFBI Expression Predicts the Survival of Patients With Oropharyngeal Squamous Cell Carcinoma. H.-J. KIM, D. AHN, T.-I. PARK, J.Y. JEONG (<i>Daegu, Republic of Korea</i>).....	3005
Tomato Juice Consumption Could Improve Breast Skin Adverse Effects of Radiotherapy in Breast Cancer Patients. Y. FUKUSHI, Y. MARIYA, K. YAMADA, K. YOSHIDA, A. SASA, H. SAITO, A. HIRAI, S. SUZUKI, K. AIZAWA, H. SUGANUMA, C. ITAKI (<i>Hirosaki; Mutsu; Hachinohe; Nasushiobara, Japan</i>)	3013
<i>Articles on Covid-19</i>	
Ivermectin Docks to the SARS-CoV-2 Spike Receptor-binding Domain Attached to ACE2. S. LEHRER, P.H. RHEINSTEIN (<i>New York City, NY; Severna Park, MD, USA</i>).....	3023
Raloxifene and Bazedoxifene Could Be Promising Candidates for Preventing the COVID-19 Related Cytokine Storm, ARDS and Mortality. K. SMETANA, JR, D. ROSEL, J. BRABEK (<i>Prague; Vestec, Czech Republic</i>).....	3027
Clinical Study of Hyperglycemia and SARS-CoV-2 Infection in Intensive Care Unit Patients. I. ILIAS, E. JAHAJ, S. KOKKORIS, D. ZERVAKIS, P. TEMPERIKIDIS, E. MAGIRA, M. PRATIKAKI, A.G. VASSILIOU, C. ROUTSI, A. KOTANIDOU, I. DIMOPOULOU (<i>Athens, Greece</i>)	3029

Assessment of Systemic Inflammatory Response and Nutritional Markers in Patients With Trastuzumab-treated Unresectable Advanced Gastric Cancer. T. NAMIKAWA, M. MAEDA, K. YOKOTA, N. TANIOKA, I. FUKUDOME, J. IWABU, M. MUNEKAGE, S. UEMURA, H. MAEDA, H. KITAGAWA, M. KOBAYASHI, K. HANAZAKI (<i>Kochi, Japan</i>)	2851
Neutrophil-to-Lymphocyte Ratio as a Prognostic Marker for Anaplastic Thyroid Cancer Treated With Lenvatinib. N. FUKUDA, K. TODA, Y. FUJIWARA, X. WANG, A. OHMOTO, T. URASAKI, N. HAYASHI, Y. SATO, K. NAKANO, M. YUNOKAWA, M. ONO, J. TOMOMATSU, H. MITANI, S. TAKAHASHI (<i>Tokyo, Japan</i>)	2859
Prediction of Results of Radiotherapy With Ku70 Expression and an Artificial Neural Network. T. HASEGAWA, M. SOMEYA, M. HORI, T. TSUCHIYA, Y. FUKUSHIMA, Y. MATSUMOTO, K.-I. SAKATA (<i>Sapporo; Tokyo, Japan</i>)	2865
Impact of Body Composition in Overweight and Obese Patients With Localised Renal Cell Carcinoma. T. DARBAS, G. FORESTIER, S. LEOBON, J. PESTRE, P. JESUS, D. LACHATRE, N. TUBIANA-MATHIEU, A. DESCAZEAUD, E. DELUCHE (<i>Limoges, France</i>).....	2873
Proton Therapy for Primary Renal Cell Carcinoma: The First Nationwide Retrospective Study in Japan. N. FUKUMITSU, H. ISHIKAWA, T. ARIMURA, H. WADA, T. OKIMOTO, Y. SATO, H. IWATA, S. SHIMIZU, H. SAKURAI (<i>Hyogo; Ibaraki; Chiba; Kagoshima; Fukushima; Fukui; Aichi, Japan</i>).....	2883
Prediction of Therapeutic Effects from One Course of TPF Chemotherapy for Advanced Hypopharyngeal Laryngeal Cancer. R. MARUYAMA, I. OKAMOTO, H. SATO, Y. KATSUBE, T. KONDO, K. TSUKAHARA (<i>Tokyo, Japan</i>).....	2891
Improvement in Left Cardiac Function Following Mitral Valve Repair: Analyses Based on Cardiac Magnetic Resonance Imaging. Y. HAYATA, N. SAWABATA, T. ABE, T. HIROSE, K. YAMASHITA, S. HIRAGA, R. FUKUBA, J. TAKEMURA, T. NAKANO, Y. SAITO, S. TANIGUCHI (<i>Kashihara, Japan</i>)	2897
Cytoplasmic CK1ε Protein Expression Is Correlated With Distant Metastasis and Survival in Patients With Melanoma. J.-W. LU, S.-H. LIN, C.-M. YEH, K.-T. YEH, L.-R. HUANG, C.-Y. CHEN, Y.-M. LIN (<i>Singapore, Singapore; Changhua; Taichung; Miaoli, Taiwan, ROC</i>).....	2905
The Influence of the Metabolic Syndrome on Early Postoperative Outcomes of Patients With Advanced-stage Endometrial Cancer. N. BACALBASA, C. DIACONU, L. ILIESCU, C. SAVU, C. SAVU, C. BALALAU, M. DIMITRIU, A. FILIPESCU, O.G. BRATU, A. NEACSU, D. CRETOIU, I. HALMACIU, I. BALESU (<i>Bucharest; Târgu Mureş, Romania</i>).....	2913
Pros and Cons of Portal Vein Embolization With Hematopoietic Stem Cells Application in Colorectal Liver Metastases Surgery. V. TRESKA, J. BRUHA, V. LISKA, J. FICHTL, K. PROCHAZKOVA, T. PETRAKOVA, P. HOSEK (<i>Pilsen, Czech Republic</i>)	2919
Evidence of Common Pathophysiology Between Stress and Urgency Urinary Incontinence in Women. W. JÄGER, S. LUDWIG, E. NEUMANN, P. MALLMANN (<i>Cologne, Germany</i>).....	2927
Laparoscopic Total Gastrectomy for Gastric Cancer in Elderly Patients. H. SUEMATSU, C. KUNISAKI, H. MIYAMATO, K. SATO, S. SATO, Y. TANAKA, N. YUKAWA, Y. RINO, T. KOSAKA, H. AKIYAMA, I. ENDO, M. MASUDA (<i>Yokohama, Japan</i>)	2933
Serum Exosomal miRNA-1915-3p Is Correlated With Disease Activity of Korean Rheumatoid Arthritis. M.-K. LIM, J. YOO, D.-H. SHEEN, C. IHM, S.K. LEE, S.A. KIM (<i>Daejeon, Republic of Korea</i>)	2941

Combination of 1 st and 2 nd Week Dosing of Glass Yttrium-90 Microspheres for Superselective Radioembolization. H.-C. KIM, M. LEE, J.-H. LEE, J.C. PAENG, Y.J. KIM, J.W. CHUNG (<i>Seoul, Republic of Korea</i>).....	2763
Comparison of Three Fractionation Schedules in Radiotherapy for Early Glottic Squamous Cell Carcinoma. G. SUZUKI, H. YAMAZAKI, N. AIBE, K. MASUI, D. SHIMIZU, T. KIMOTO, T. NISHIMURA, K. KAWABATA, S. NAGASAWA, K. MACHIDA, Y. YOSHINO, S. WATANABE, Y. SUGIYAMA, A. ARAI, S. HIRANO, K. YAMADA (<i>Kyoto, Japan</i>)	2769
Patterns of Expression of H2S-Producing Enzyme in Human Renal Cell Carcinoma Specimens: Potential Avenue for Future Therapeutics. E. SOGUTDELEN, K. PACOLI, S. JURIASINGANI, M. AKBARI, M. GABRIL, A. SENER (<i>Bolu, Turkey; London, ON, Canada</i>)	2775
The Clinical Impact of the Age-adjusted Charlson Comorbidity Index on Esophageal Cancer Patients Who Receive Curative Treatment. T. AOYAMA, Y. ATSUMI, S. KAWAHARA, H. TAMAGAWA, A. TAMAGAWA, Y. OZAWA, Y. MAEZAWA, K. KANO, M. MURAKAWA, K. KAZAMA, K. SEGAMI, K. HARA, M. NUMATA, T. OSHIMA, N. YUKAWA, M. MASUDA, Y. RINO (<i>Yokohama; Miura, Japan</i>).....	2783
Pancreatectomy With Arterial and Portal Vein Reconstruction for Locally Advanced Pancreatic Cancer – A Case Report and Literature Review. V. BRASOVEANU, D. ROMANESCU, I. BARBU, I. BALESCU, N. BACALBASA (<i>Bucharest, Romania</i>)	2791
A Comparison of Open and Laparoscopic-assisted Colectomy for Obstructive Colon Cancer. H. TAMAGAWA, T. AOYAMA, M. NUMATA, K. KAZAMA, Y. MAEZAWA, Y. ATSUMI, K. HARA, S. KAWAHARA, K. KANO, N. YUKAWA, H. SAEKI, T. GODAI, Y. RINO, M. MASUDA (<i>Yokohama; Fujisawa, Japan</i>).....	2797
Predicting Postoperative Events in Patients With Gastric Cancer: A Comparison of Five Nutrition Assessment Tools. S.-W. HSUEH, K.-H. LIU, C.-Y. HUNG, C.-Y. TSAI, J.-T. HSU, N.-M. TSANG, W.H. HSUEH, C. YANG, W.-C. CHOU (<i>Keelung; Taoyuan; Taipei; New Taipei City, Taiwan, ROC</i>)	2803
Association Between <i>M235T</i> -AGT and <i>I/D</i> -ACE Polymorphisms and Carotid Atheromatosis in Hypertensive Patients: A Cross-sectional Study. O. MOCAN, D. RADULESCU, E. BUZDUGAN, A. COZMA, D.C. LEUCUTA, L.M. PROCOPCIUC (<i>Cluj-Napoca, Romania</i>).....	2811
Safety and Effectiveness of Ixazomib Dose-escalating Strategy in Ixazomib-Lenalidomide-Dexamethasone Treatment for Relapsed/Refractory Multiple Myeloma. Y. OHASHI, M. YATABE, D. NIIJIMA, K. TANI, C. OGAWA, Y. YACHI, T. KAGOO, S. BOKU, H. UENO, T. YANO, K. HIGAI, A. YOKOYAMA (<i>Tokyo; Chiba, Japan</i>).....	2821
Serum High-Sensitive C-reactive Protein May Reflect Periodontitis in Patients With Stroke. H. TUOMINEN, M. TAINA, M. PURANEN, J. ONATSU, S. HUUMONEN, R. VANNINEN (<i>Kuopio, Finland</i>).....	2829
Surgical Outcomes Following Early Drain Removal After Distal Pancreatectomy in Elderly Patients. T. SAKAMOTO, Y. YAGYU, E. UCHINAKA, T. HANAKI, K. MIYATANI, K. KIHARA, M. YAMAMOTO, T. MATSUNAGA, N. TOKUYASU, S. HONJO, Y. FUJIWARA (<i>Yonago, Japan</i>)	2837
Prognostic Impact of Coagulation Activity in Patients Undergoing Curative Resection for Pancreatic Ductal Adenocarcinoma. K. MATSUMURA, H. HAYASHI, N. UEMURA, L. ZHAO, T. HIGASHI, T. YAMAO, F. KITAMURA, Y. NAKAO, T. YUSA, R. ITOYAMA, K. IMAI, Y.-I. YAMASHITA, H. BABA (<i>Kumamoto, Japan</i>).....	2845

Long-term Results of Surgery for Colorectal Liver Metastases in Terms of Primary Tumour Location and Clinical Risk Factors. V. TRESKA, M. SKALA, K. PROCHAZKOVA, A. SVEJDOVA, T. PETRAKOVA, J. SEBEK, I. RIHA, J. ROSENDORF, R. POLAK, T. SKALICKY, V. LISKA (<i>Pilsen, Czech Republic</i>)	2675
Metronomic Oral Vinorelbine: An Alternative Schedule in Elderly and Patients PS2 With Local/Advanced and Metastatic NSCLC Not Oncogene-addicted. D. ROSSI, P. LIPPE, M.B.L. ROCCHI, D. SARTI, V. CATALANO, F. GRAZIANO, P. GIORDANI, A. BALDELLI, S.L. FEDELI, L. IMPERATORI, G. LAICI, C. CAPPELLETTI, T. TAMBURRANO, R. BRACCI, P. ALESSANDRONI (<i>Pesaro; Urbino, Italy</i>)	2687
Preliminary Report: Asymmetric Crypt Fission in Biopsies from Patients With Ulcerative Colitis. C.A. RUBIO, P.T. SCHMIDT (<i>Stockholm, Sweden</i>)	2693
The Short- and Long-term Outcomes of Gastrectomy in Elderly Patients With Gastric Cancer. K. KOMORI, K. KANO, T. AOYAMA, I. HASHIMOTO, K. HARA, M. MURAKAWA, Y. ATSUMI, Y. MAEZAWA, K. KAZAMA, M. NUMATA, H. TAMAGAWA, N. YUKAWA, T. OSHIMA, M. MASUDA, Y. RINO (<i>Yokohama, Japan</i>)	2697
Pre-operative Seizures in Patients With Single Brain Metastasis Treated With Resection Plus Whole-Brain Irradiation and a Boost. D. RADES, J. WITTELER, T.W. KJAER, S. TVILSTED, S.E. SCHILD (<i>Lóbeck, Germany; Roskilde; Koege, Denmark; Scottsdale, AZ, USA</i>)	2705
Lung Cancer: A Nationwide Study to Characterize Sex Differences, Incidence, and Spatial Patterns in Portugal. T. GUERREIRO, L. ANTUNES, J. BASTOS, A. MAYER, G. FORJAZ, A. ARAUJO, C. NUNES (<i>Lisbon; Porto; Coimbra; Azores, Portugal; Rockville, MD, USA</i>).....	2711
Computed Tomography of Lymph Node Metastasis Before and After Radiation Therapy: Correlations With Residual Tumour. N. ISHIBASHI, T. MAEBAYASHI, H. NISHIMAKI, M. OKADA (<i>Tokyo, Japan</i>).....	2721
Pre-Treatment Seizures in Patients With 1-3 Cerebral Metastases Receiving Local Therapies Plus Whole-brain Radiotherapy. J. WITTELER, T.W. KJAER, S. TVILSTED, S.E. SCHILD, D. RADES (<i>Lübeck, Germany; Roskilde; Koege, Denmark; Scottsdale, AZ, USA</i>)	2727
Scalp Lesions Referred For Surgical Procedures: Single-Center 5-year Experience in Southwestern Poland. I. CHLEBICKA, A.A. STEFANIAK, A. GAWDZIK, A. RYGAŁ, Ł. MATUSIAK, J.C. SZEPIETOWSKI (<i>Wrocław, Poland</i>)	2733
Long-term Outcomes of Cervical Adenocarcinoma Treated With Concurrent Chemoradiotherapy Using Paclitaxel and Cisplatin. Y. ARAKAKI, T. ARIGA, J. HEIANNA, Y. SHIMOJI, T. NAKASONE, Y. TAIRA, T. NAKAMOTO, T. OYOYAMA, W. KUDAKA, I. KANESHIMA, K. NISHIHIRA, K. MEKARU, Y. AOKI (<i>Okinawa, Japan</i>).....	2739
Impact of Acridine Orange in Patients With Local Recurrent Soft Tissue Sarcoma. H. TSUCHIE, M. EMORI, N. MIYAKOSHI, K. OKADA, H. NAGASAWA, Y. MURAHASHI, E. MIZUSHIMA, J. SHIMIZU, T. YAMASHITA, Y. SHIMADA (<i>Akita; Sapporo, Japan</i>).....	2745
Rare Case of Renal-type Clear Cell Carcinoma of the Prostate and Review of the Literature. S.I. HAN, S.-C. LIM (<i>Gwangju, Republic of Korea</i>)	2751
Subtotal Colectomy as Part of Debulking Surgery for Advanced-stage Ovarian Cancer. N. BACALBASA, C. DIACONU, L. ILIESCU, S. DIMA, O.G. BRATU, D. CRETOIU, A. NEACSU, A. FILIPESCU, C. SAVU, I. BALESCU (<i>Bucharest, Romania</i>)	2757

Older Age Is Associated With Better Compliance With Follow-up in Taiwan After Functional Endoscopic Sinus Surgery. T. TSAI, L.-C. SHIH, I.T. LEE, T.-Y. NG, J.-Y. WANG, C.-L. HSU, D.-T. BAU, C.-J. TAI (<i>Taichung, Taiwan, ROC; Stanford, CA, USA</i>)	2571
Tau, S100B and NSE as Blood Biomarkers in Acute Cerebrovascular Events. J. ONATSU, R. VANNINEN, P. JÄKÄLÄ, P. MUSTONEN, K. PULKKI, M. KORHONEN, M. HEDMAN, K. HÖGLUND, K. BLENNOW, H. ZETTERBERG, S.-K. HERUKKA, M. TAINA (<i>Kuopio; Jyväskylä, Finland; Mölndal, Sweden; London, UK</i>).....	2577
Intensity-modulated Radiation Therapy for Lymph Node Oligo-recurrence. A. SATO, M. OMURA, Y. MINAGAWA, K. MATSUI, R. SHIRATA, H. HONGO, H. HASHIMOTO, T. MISUMI, T. INOUE, M. HATA (<i>Kamakura; Yokohama; Fujisawa, Japan</i>)	2587
Biomarker Analyses in Patients With Advanced Solid Tumors Treated With the LAT1 Inhibitor JPH203. N. OKANO, K. HANA, D. NARUGE, K. KAWAI, T. KOBAYASHI, F. NAGASHIMA, H. ENDOU, J. FURUSE (<i>Tokyo; Kanagawa, Japan</i>).....	2595
Anatomical Versus Non-anatomical Resection for Hepatocellular Carcinoma, a Propensity-matched Analysis Between Taiwanese and Japanese Patients. S.-W. HUANG, P.-Y. CHU, S. ARIIZUMI, C.C.-W. LIN, H.P. WONG, D.-A. CHOU, M.-T. LEE, H.-J. WU, M. YAMAMOTO (<i>Changhua; New Taipei City; Taipei; Taichung, Taiwan, ROC; Tokyo, Japan</i>).....	2607
Clinicopathological Characteristics of Squamous Cell Carcinoma and High-grade Squamous Intraepithelial Lesions Involving Endocervical Polyps. C.K. PARK, Y.-W. KIM, H.H. KOH, N. YOON, G.E. BAE, H.-S. KIM (<i>Seoul; Incheon; Daejeon, Republic of Korea</i>).....	2613
Effects of Alkalinization Therapy on Chemotherapy Outcomes in Advanced Pancreatic Cancer: A Retrospective Case-Control Study. R. HAMAGUCHI, T. ITO, R. NARUI, H. MORIKAWA, S. UEMOTO, H. WADA (<i>Kyoto, Japan</i>).....	2623
Prognostic and Clinical Implications of WNK Lysine Deficient Protein Kinase 1 Expression in Patients With Hepatocellular Carcinoma. Y.-J. HO, J. CHANG, K.-T. YEH, Z. GONG, Y.-M. LIN, J.-W. LU (<i>Taipei; Changhua; Taichung, Taiwan, ROC; Singapore, Singapore</i>).....	2631
VEGF-A Is Associated With the Degree of TILs and PD-L1 Expression in Primary Breast Cancer. T. FUJII, T. HIRAKATA, S. KUROSUMI, S. TOKUDA, Y. NAKAZAWA, S. OBAYASHI, R. YAJIMA, T. OYAMA, K. SHIRABE (<i>Gunma, Japan</i>).....	2641
Association Between Immune-related Adverse Events and Clinical Outcome Following Nivolumab Treatment in Patients With Metastatic Renal Cell Carcinoma. K. KOBAYASHI, Y. IIKURA, M. HIRAIDE, T. YOKOKAWA, T. AOYAMA, S. SHIKIBU, K. HASHIMOTO, K. SUZUKI, H. SATO, E. SUGIYAMA, M. TAJIMA, T. HAMA (<i>Tokyo, Japan</i>)	2647
Weekly Cetuximab and Paclitaxel for Recurrent or Metastatic Head and Neck Squamous Cell Carcinoma. C. FUSHIMI, D. BABA, T. MASUBUCHI, M. YAMAZAKI, Y. KITANI, T. KITAJIMA, J. TANAKA, K. HANYU, N. TANAKA, K. MIURA, Y. TADA (<i>Tokyo, Japan</i>).....	2653
Functional and Radiological Assessment After Preservation Rhinoplasty – A Clinical Study. G. STERGIU, M. TREMP, V. FINOCCHI, Y. SABAN (<i>Zurich; Basel, Switzerland; Rome, Italy; Nice, France</i>).....	2659
Prognostic Role of the Platelet-to-Lymphocyte Ratio for Patients With Metastatic Colorectal Cancer Treated With Aflibercept. A. MATSUDA, T. YAMADA, S. MATSUMOTO, S. SHINJI, R. OHTA, H. SONODA, E. SHINOZUKA, K. SEKIGUCHI, H. SUZUKI, H. YOSHIDA (<i>Inzai; Tokyo, Japan</i>)	2667

Demethoxycurcumin Inhibits <i>In Vivo</i> Growth of Xenograft Tumors of Human Cervical Cancer Cells. F.-S. CHUEH, J.-C. LIEN, Y.-C. CHOU, W.-W. HUANG, Y.-P. HUANG, J.-Y. HUANG, J.-Y. KUO, W.-N. HUANG, S.-Y. SHENG, H.-Y. TUNG, H.-Y. CHEN, S.-F. PENG (<i>Taichung; Taipei; Yunlin, Taiwan, ROC</i>).....	2469
The Effects of Ascorbic Acid and U-74389G on Renal Ischemia-Reperfusion Injury in a Rat Model. C.G. ZOGRAFOS, D. CHRYSIKOS, T. PITTARAS, V. KARAMPELIAS, A. CHAIRAKAKIS, A. GALANOS, I. SFINIADAKIS, E. FELEKOURAS, G.C. ZOGRAFOS, M. SIDERIS, K. PAPADOPOULOU, A.E. PAPALOIS (<i>Athens; Patras, Greece; London, UK; Nicosia, Cyprus</i>).....	2475
Role of Leptin in Neoplastic and Biliary Tree Disease. P. IZZO, S. IZZO, P. DI CELLO, G. D'AMATA, M. CARDI, A. POLISTENA, D. MESSINEO, L. IZZO (<i>Rome; Naples; Frosinone, Italy</i>).....	2485
High Paip1 Expression as a Potential Prognostic Marker in Hepatocellular Carcinoma. H. KIM, W. JUNG, A. KIM, H.K. KIM, B.-H. KIM (<i>Seoul; Yongin, Republic of Korea</i>).....	2491
Do <i>TRIB1</i> and <i>IL-9</i> Gene Polymorphisms Impact the Development and Manifestation of Pituitary Adenoma? T. MICKEVICIUS, A. VILKEVICIUTE, B. GLEBAUSKIENE, L. KRIAUCIUNIENE, R. LIUTKEVICIENE (<i>Kaunas, Lithuania</i>).....	2499
Hydrogen Sulphide and Nitric Oxide Cooperate in Cardioprotection Against Ischemia/Reperfusion Injury in Isolated Rat Heart. S. USTUNOVA, S. TAKIR, N. YILMAZER, H. BULUT, D. ALTINDIREK, O. HATIRNAZ NG, C. DEMIRCI TANSEL, B.S. UYDES DOGAN, U. OZBEK, E.I. ARMUTAK, E.G. GUREVIN (<i>Istanbul; Giresun; Tekirdag, Turkey</i>)	2507
<i>Clinical Studies</i>	
Hip Arthroplasty Following Subtotal Sacrectomy for Chordoma. M.R. CLAXTON, M.B. SHIRLEY, J.D. JOHNSON, K.I. PERRY, P.S. ROSE, M.T. HOUDEK (<i>Rochester, MN, USA</i>).....	2517
Fluoroscopic Intraoperative Images Produce Higher Image Quality and Decrease Total Radiation Exposure Compared to Radiographic X-ray Images in Patients After Primary Total Knee Arthroplasty. T. GRAULICH, J. GERHARDY, M. ÖRGEL, T. OMAR-PACHA, M. OMAR, C. KRETTEK, D. GUENTHER (<i>Hannover; Cologne, Germany</i>)	2521
Lingual Mandibular Bone Depression. R.E. FRIEDRICH, E. BARSUKOV, F.K. KOHLRUSCH, J. ZUSTIN, C. HAGEL, U. SPETH, T. VOLLKOMMER, M. GOSAU (<i>Hamburg; Regensburg, Germany</i>).....	2527
Arteriovenous Loops Enable Free Tissue Transfer With Otherwise Inadequate Local Donor and Recipient Vessels. M. TREMP, C.M. ORANGES, T. WOLFF, M. BARANDUN, I. FULCO, H. ECKARDT, D.J. SCHAEFER, D.F. KALBERMATTEN (<i>Basel, Switzerland</i>).....	2543
Sarcopenia and Frailty in Chronic Liver Damage: Common and Different Points. H. NISHIKAWA, K. YOH, H. ENOMOTO, Y. IWATA, Y. SAKAI, K. KISHINO, Y. SHIMONO, N. IKEDA, T. TAKASHIMA, N. AIZAWA, R. TAKATA, K. HASEGAWA, T. KORIYAMA, Y. YURI, T. NISHIMURA, S. NISHIGUCHI, H. IJIMA (<i>Nishinomiya; Osaka, Japan</i>).....	2549
Calf Circumference as a Useful Predictor of Sarcopenia in Patients With Liver Diseases. H. NISHIKAWA, K. YOH, H. ENOMOTO, Y. IWATA, Y. SAKAI, K. KISHINO, Y. SHIMONO, N. IKEDA, T. TAKASHIMA, N. AIZAWA, R. TAKATA, K. HASEGAWA, T. KORIYAMA, Y. YURI, T. NISHIMURA, S. NISHIGUCHI, H. IJIMA (<i>Nishinomiya; Osaka, Japan</i>).....	2561

Salivary <i>NUS1</i> and <i>RCN1</i> Levels as Biomarkers for Oral Squamous Cell Carcinoma Diagnosis. S. UEDA, K. HASHIMOTO, S. MIYABE, S. HASEGAWA, M. GOTO, D. SHIMIZU, I. OH-IWA, K. SHIMOZATO, T. NAGAO, S. NOMOTO (Nagoya, Japan)	2353
Expansion of Human Dental Pulp Cells <i>In Vitro</i> Under Different Cryopreservation Conditions. M. YAN, O.A. NADA, L. KLUWE, M. GOSAU, R. SMEETS, R.E. FRIEDRICH (Hamburg, Germany).....	2363
Monte Carlo Modeling of the Agility MLC for IMRT and VMAT Calculations. S. OHIRA, H. TAKEGAWA, M. MIYAZAKI, M. KOIZUMI, T. TESHIMA (Osaka, Japan)	2371
Huaier Extract Induces Apoptosis in Hepatoblastoma Cells <i>Via</i> the MEK/ERK Signaling Pathway. D.-Q. XU, X.-J. YUAN, M. HIRAYAMA, H. TOYODA (Shanghai, PR China; Mie, Japan).....	2381
Interval Vibration Reduces Orthodontic Pain <i>Via</i> a Mechanism Involving Down-regulation of TRPV1 and CGRP. P. THAMMANICHANON, A. KAEWPITAK, T. BINLATEH, C. LEETHANAKUL (Hat Yai, Thailand)	2389
A Relationship Between Cervical Vertebrae Twisting and Cranial Angle in Head and Neck Radiotherapy. T. AOYAMA, H. SHIMIZU, K. SASAKI, M. ANDO, N. KANEDA, H. TACHIBANA, K. SUZUKI, T. KODAIRA (Nagoya; Nagakute; Maebashi; Aichi, Japan)	2401
ERK/AKT Inactivation and Apoptosis Induction Associate With Quetiapine-inhibited Cell Survival and Invasion in Hepatocellular Carcinoma Cells. Y.-J. LEE, J.-G. CHUNG, Z.-L. TAN, F.-T. HSU, Y.-C. LIU, S.-S. LIN (Kaohsiung; Taichung; Changhua, Taiwan, ROC).....	2407
Extended Stability of Reconstituted Lyophilized Erwinia L-asparaginase in Vials. M.M. VIÑA-ROMERO, R. RAMOS-DIAZ, I. MOURANI-PADRON, H. GONZALEZ-MENDEZ, M. GONZALEZ-CRUZ, G.J. NAZCO-CASARIEGO, J.F. MERINO-ALONSO, J. DIAZ-VERA, F. GUTIÉRREZ-NICOLÁS (Santa Cruz de Tenerife; La Laguna, Tenerife, Spain).....	2419
Impact of Deserosalization on Small Bowel Anastomosis Healing in Swine: A Pilot Study. G.-Z. VRAKOPOULOU, K.G. TOUTOUZAS, P. GIANNIOS, S.-G. PANOUSOPOULOS, C. THEODOROPOULOS, E. DANAS, A. LIAKEA, A.E. PAPALOIS, G. ZOGRAFOS, A. LARENTZAKIS (Athens; Pikermi, Greece; Barcelona, Spain; Nicosia, Cyprus).....	2423
Evaluation of Renal Function in Obstructed Ureter Model Using ^{99m} Tc-DMSA. S.J. JANG, B.S. CHOI, S.H. CHOI (Cheongju, Republic of Korea)	2431
Expression of Ascorbate Peroxidase Derived from <i>Cyanidioschyzon merolae</i> in Mammalian Cells. S. HITOMI, S. KOKABU, K.-I. MATSUMOTO, Y. SHOJI, I. UJIHARA, K. ONO (Fukuoka; Kitakyushu; Chiba, Japan)	2437
The Role of SNPs in <i>IL1RL1</i> and <i>IL1RAP</i> Genes in Age-related Macular Degeneration Development and Treatment Efficacy. A. VILKEVICIUTE, N. BASTIKAITYTE, R. MOCKUTE, D. CEBATORIENE, L. KRIAUCIUNIENE, J. BALCIUNIENE, R. ZEMAITIENE, R. LIUTKEVICIENE (Kaunas, Lithuania).....	2443
The Effect of Rutin on Experimental Traumatic Brain Injury and Edema in Rats. S. YUCELI, G.N. YAZICI, R. MAMMADOV, H. SULEYMAN, M. KAYA, S. OZDOGAN (Erzincan; Sakarya; Istanbul, Turkey)	2453
Casticin Inhibits <i>In Vivo</i> Growth of Xenograft Tumors of Human Oral Cancer SCC-4 Cells. H.-S. SHANG, K.-W. CHEN, J.-S. CHOU, S.-F. PENG, Y.-L. CHEN, P.-Y. CHEN, H.-C. HUANG, H.-F. LU, H.-Y. CHANG, Y.-L. SHIH, W.-W. HUANG (Taipei; Taichung; Hsinchu; New Taipei, Taiwan, ROC)	2461

Reverse Transcriptase Affects Gametogenesis and Preimplantation Development in Mouse. C. KITSOU, L. LAZAROS, A. PAPOUDOU-BAI, P. SAKALOGLOU, E. MASTORA, T. LYKOVARDAKIS, K. GIAKA, G. VARTHOLOMATOS, I. BOUBA, S. MARKOULA, A. BATISTATOU, I. GEORGIU (Ioannina; Athens, Greece).....	2269
Indocyanine Green Labels an Orthotopic Nude-Mouse Model of Very-Early Colon-Cancer Liver Metastases. Y. TASHIRO, H.M. HOLLANDSWORTH, H. NISHINO, J. YAMAMOTO, S. AMIRFAKHRI, F. FILEMONI, N. SUGISAWA, T. AOKI, M. MURAKAMI, R.M. HOFFMAN, M. BOUVET (San Diego, CA, USA; Tokyo, Japan).....	2277
Oral Methioninase Inhibits Recurrence in a PDOX Mouse Model of Aggressive Triple-negative Breast Cancer. H.I. LIM, K. HAMADA, J. YAMAMOTO, Q. HAN, Y. TAN, H.J. CHOI, S.J. NAM, M. BOUVET, R.M. HOFFMAN (San Diego, CA, USA; Changwon; Seoul, Republic of Korea).....	2281
<i>In Vitro</i> and <i>In Vivo</i> Biocompatibility Analysis of a New Transparent Collagen-based Wound Membrane for Tissue Regeneration in Different Clinical Indications. O. JUNG, M. RADENKOVIC, S. STOJANOVIĆ, C. LINDNER, M. BATINIC, O. GÖRKE, J. PISSAREK, A. PRÖHL, S. NAJMAN, M. BARBECK (Rostock; Berlin, Germany; Niš, Serbia).....	2287
Hepatocellular Carcinoma-associated microRNAs Induced by Hepatoma-derived Growth Factor Stimulation. H. ENOMOTO, H. NAKAMURA, H. NISHIKAWA, T. NISHIMURA, Y. IWATA, S. NISHIGUCHI, H. IJIMA (Hyogo; Osaka, Japan).....	2297
Humanized Fluorescent Tumor-associated Glycoprotein-72 Antibody Selectively Labels Colon-Cancer Liver Metastases in Orthotopic Mouse Models. H.M. HOLLANDSWORTH, H. NISHINO, M. TURNER, S. AMIRFAKHRI, F. FILEMONI, R.M. HOFFMAN, P.J. YAZAKI, M. BOUVET (San Diego; Duarte, CA, USA).....	2303
An Improved Encapsulation Method for Cryopreserving Hepatocytes for Functional Transplantation Using a Thermo-reversible Gelation Polymer. K. YAMADA, T. AOKI, Y. ENAMI, Y. TASHIRO, Z. ZEHAOU, T. KOIZUMI, T. KUSANO, K. MATSUDA, Y. WADA, H. SHIBATA, K. TOMIOKA, K. SIRIRATSIVAWONG, R.M. HOFFMAN, M. MURAKAMI (Tokyo, Japan; San Diego, CA, USA).....	2309
Deep Sequencing Identified Dysregulated Circulating MicroRNAs in Late Onset Preeclampsia. D. MAVRELI, A. LYKOUDI, G. LAMBROU, G. PAPAIOANNOU, N. VRACHNIS, S. KALANTARIDOU, N. PAPANTONIOU, A. KOLIALEXI (Athens, Greece).....	2317
Ablation Precision and Thermal Effects of a Picosecond Infrared Laser (PIRL) on Roots of Human Teeth: A Pilot Study <i>Ex Vivo</i> . R.E. FRIEDRICH, M. QUADE, N. JOWETT, P. KROETZ, M. AMLING, F.K. KOHLRUSCH, J. ZUSTIN, M. GOSAU, H. SCHLÜTER, R.J.D. MILLER (Hamburg; Regensburg, Germany; Boston, MA, USA; Toronto, Canada).....	2325
Effect of 7,12-Dimethylbenz(a)anthracene on the Expression of miR-330, miR-29a, miR-9-1, miR-9-3 and the mTORC1 Gene in CBA/Ca Mice. A. TOMESZ, L. SZABO, R. MOLNAR, A. DEUTSCH, R. DARAGO, D. MATHE, F. BUDAN, N. GHODRATOLLAH, T. VARJAS, B. NEMETH, I. KISS (Pécs; Budapest; Veszprém, Hungary).....	2337
Oral Administration of Geranylgeraniol Rescues Denervation-induced Muscle Atrophy via Suppression of Atrogin-1. A. MIYAWAKI, T. ROJASAWASTHIEN, S. HITOMI, Y. AOKI, M. URATA, A. INOUE, T. MATSUBARA, K. MORIKAWA, M. HABU, K. TOMINAGA, S. KOKABU (Kitakyushu; Tokyo; Morioka, Japan).....	2345

Instructions for Authors 2020

General Policy. IN VIVO is a multidisciplinary journal designed to bring together original high quality works and reviews on experimental and clinical biomedical research within the frames of human physiology, pathology and disease management. The topics of IN VIVO include: 1. Experimental development and application of new diagnostic and therapeutic procedures; 2. Pharmacological and toxicological evaluation of new drugs, drug combinations and drug delivery systems; 3. Clinical trials; 4. Development and characterization of models of biomedical research; 5. Cancer diagnosis and treatment; 6. Immunotherapy and vaccines; 7. Radiotherapy, Imaging; 8. Tissue engineering, Regenerative medicine; 9. Carcinogenesis; Each article should include a concrete conclusion constituting of a “new piece of knowledge” backed up by scientific evidence. 10. Retrospective studies and case reports. The principal aim of IN VIVO is to provide prompt online publication for accepted articles, generally within 1-2 months from final acceptance.

Manuscripts will be accepted on the understanding that they report original unpublished works that are not under consideration for publication by another journal, and that they will not be published again in the same form. All authors should sign a submission letter confirming the approval of their article contents. All material submitted to IN VIVO will be subject to peer-review, when appropriate, by two members of the Editorial Board. All manuscripts submitted to IN VIVO are urgently treated with absolute confidence, with access restricted to the Managing Editor, the journal’s secretary, the reviewers and the printers. The Editors reserve the right to improve manuscripts on grammar and style.

The use of animals in biomedical research should take place under careful supervision of a person adequately trained in this field and the animals must be treated humanely at all times. Such research should adhere to the Guiding Principles in the Care and Use of Animals approved by the Council of the American Physiological Society.

The Editors and Publishers of IN VIVO accept no responsibility for the contents and opinions expressed by the contributors. Authors should warrant due diligence in the creation and issuance of their work.

Open Access Policy. IN VIVO appears bimonthly as an online-only open access journal through the Stanford University HighWire Press. Upon acceptance, Authors will be asked to pay an online publication fee of USD 700.00 (effective January 1, 2020) for articles up to 8 online pages (including figures and tables). Each additional excess page will be charged USD 60.00. Color will not be charged. Authors from developing countries may apply for a 25% discount after the acceptance of their paper. IN VIVO online will keep the volume and issue numbers, as well as page numbering.

Copyright. Authors retain copyright. The unrestricted non-commercial use, distribution and reproduction in any medium of IN VIVO articles for academic reasons is allowed, provided that the original work is properly cited. The Authors grant the permanent right to the publisher to use any articles published in this journal without any restriction, including academic advertising purposes. PDF, XML and html files of all articles published in IN VIVO are the property of the publisher.

Format. Two types of papers may be submitted: (i) Full papers containing completed original work, and (ii) review articles concerning fields of recognisable progress. Papers should contain all essential data in order to make the presentation clear. Papers should be written in clear, concise English. Spelling should follow that given in the “Shorter Oxford English Dictionary”.

Manuscripts. Manuscripts should be divided into the following sections: (a) *First page* including the title of the presented work [not exceeding fifteen (15) words], full names and full postal addresses of all Authors, name of the Author to whom proofs are to be sent, key words, an abbreviated running title, an indication “review”, “clinical”, “epidemiological”, or “experimental” study, and the date of submission. (Note: The order of the Authors is not necessarily indicative of their contribution to the work. Authors may note their individual contribution(s) in the appropriate section(s) of the presented work); (b) *Abstract* not exceeding 150 words, organized according to the following headings: Background/Aim – Materials and Methods/Patients and Methods – Results – Conclusion; (c) *Introduction*; (d) *Materials and Methods/Patients and Methods*; (e) *Results*; (f) *Discussion*; (g) *Conflicts of Interest*; (h) *Authors’ contributions*; (i) *Acknowledgements*; (j) *References*. All pages must be numbered consecutively. Footnotes should be avoided. Review articles may follow a different style according to the subject matter and the Author’s opinion. Review articles should not exceed 35 pages (approximately 250 words per double-spaced typed page) including all tables, figures, and references.

Figures. All figures should appear **at the end** of the submitted document file. Once a manuscript is accepted all figures and graphs should be submitted separately in either jpg, tiff or pdf format and at a minimum resolution of 300 dpi. Graphs must be submitted as pictures made from drawings and must not require any artwork, typesetting, or size modifications. Symbols, numbering and lettering should be clearly legible. The number and top of each figure must be indicated. Pages that include color figures are not subject to color charges.

Tables. All tables should appear **at the end** of the submitted document file. Once a manuscript is accepted, each table should be submitted separately, typed double-spaced. Tables should be numbered with Roman numerals and should include a short title.

References. Authors must assume responsibility for the accuracy of the references used. Citations for the reference sections of submitted works should follow the form below and must be numbered consecutively. In the text, references should be cited by number in parenthesis. Examples: 1 Kenyon J, Liu W and Dalglish A: Report of objective clinical responses of cancer patients to pharmaceutical-grade synthetic cannabidiol. *Anticancer Res* 38(10): 5831-5835, 2018. PMID: 30275207. DOI: 10.21873/anticancer.12924. (PMIDs and DOIs only if applicable). 2 McGuire WL and Chamnes GC: Studies on the oestrogen receptor in breast cancer. In: *Receptors for Reproductive Hormones*. O' Malley BW, Chamnes GC (eds.). New York, Plenum Publ Corp., pp 113-136, 1973. 3 Global Health Estimates 2015: Disease Burden by Cause, Age, Sex, by Country and by Region, 2000-2015. Geneva, World Health Organisation, 2016. Available at http://www.who.int/healthinfo/global_burden_disease/estimates/en/index2.html. Last accessed on 3rd April 2018. (The web address should link directly to the cited information and not to a generic webpage).

Nomenclature and Abbreviations. Nomenclature should follow that given in "Chemical Abstracts", "Index Medicus", "Merck Index", "IUPAC -IUB", "Bergey's Manual of Determinative Bacteriology", The CBE Manual for Authors, Editors and Publishers (6th edition, 1994), and MIAME Standard for Microarray Data. Human gene symbols may be obtained from the HUGO Gene Nomenclature Committee (HGNC) (<http://www.gene.ucl.ac.uk/>). Approved mouse nomenclature may be obtained from <http://www.informatics.jax.org/>. Standard abbreviations are preferable. If a new abbreviation is used, it must be defined on first usage.

Clinical Trials. Authors of manuscripts describing clinical trials should provide the appropriate clinical trial number in the correct format in the text.

For International Standard Randomised Controlled Trials (ISRCTN) Registry (a not-for-profit organization whose registry is administered by Current Controlled Trials Ltd.) the unique number must be provided in this format: ISRCTNXXXXXXXX (where XXXXXXXX represents the unique number, always prefixed by "ISRCTN"). Please note that there is no space between the prefix "ISRCTN" and the number. Example: ISRCTN47956475.

For Clinicaltrials.gov registered trials, the unique number must be provided in this format: NCTXXXXXXXX (where XXXXXXXX represents the unique number, always prefixed by "NCT"). Please note that there is no space between the prefix "NCT" and the number. Example: NCT00001789.

Ethical Policies and Standards. IN VIVO agrees with and follows the "Uniform Requirements for Manuscripts Submitted to Biomedical Journals" established by the International Committee of Medical Journal Editors in 1978 and updated in October 2001 (www.icmje.org). Microarray data analysis should comply with the "Minimum Information About Microarray Experiments (MIAME) standard". Specific guidelines are provided at the "Microarray Gene Expression Data Society" (MGED) website. Presentation of genome sequences should follow the guidelines of the NHGRI Policy on Release of Human Genomic Sequence Data. Research involving human beings must adhere to the principles of the Declaration of Helsinki and Title 45, U.S. Code of Federal Regulations, Part 46, Protection of Human Subjects, effective December 13, 2001. Research involving animals must adhere to the Guiding Principles in the Care and Use of Animals approved by the Council of the American Physiological Society. The use of animals in biomedical research should be under the careful supervision of a person adequately trained in this field and the animals must be treated humanely at all times. Research involving the use of human foetuses, foetal tissue, embryos and embryonic cells should adhere to the U.S. Public Law 103-41, effective December 13, 2001.

Submission of Manuscripts. Please follow the Instructions for Authors regarding the format of your manuscript and references. Manuscripts must be submitted only through our online submission system at: <http://www.iar-submissions.com/login.html> In case a submission is incomplete, the corresponding Author will be notified accordingly. Questions regarding difficulties in using the online submission system should be addressed to: email: journals@iar-anticancer.org

Galley Proofs. Unless otherwise indicated, galley proofs will be sent to the corresponding Author of the submission. Corrections of galley proofs should be limited to typographical errors. Galley proofs should be returned corrected to the Editorial Office by email within two days.

Specific information and additional instructions for Authors

1. In Vivo (IV) will consider the publication of conference proceedings and/or abstracts provided that the material submitted fulfils the quality requirements and instructions of the journal, following the regular review process by two suitable referees.
2. An acknowledgement of receipt, including the article number, title and date of receipt is sent to the corresponding author of each manuscript upon receipt. If this receipt is not received within 20 days from submission, the author should call or write to the Editorial Office to ensure that the manuscript (or the receipt) was not lost in the mail.

3. Each manuscript submitted to IV is sent for peer-review in confidence to two suitable referees with the request to return the manuscript with their comments to the Editorial Office within 12 days from receipt. If reviewers need a longer time or wish to send the manuscript to another expert, the manuscript may be returned to the Editorial Office with a delay. All manuscripts submitted to IV, are treated in confidence, without access to any person other than the Managing Editor, the journal's secretary, the reviewers and the printers.
4. All accepted manuscripts are carefully corrected in style and language, if necessary, to make presentation clear. (There is no fee for this service). Every effort is made (a) to maintain the personal style of the author's writing and (b) to avoid change of meaning. Authors will be requested to examine carefully manuscripts which have undergone language correction at the pre-proof or proof stage.
5. Authors should pay attention to the following points when writing an article for IN VIVO:
 - The Instructions to Authors must be followed in every detail.
 - The presentation of the experimental methods should be clear and complete in every detail facilitating reproducibility by other scientists.
 - The presentation of results should be simple and straightforward in style. Results and discussion should not be combined into one section, unless the paper is short.
 - Results given in figures should not be repeated in tables.
 - Figures (graphs or photographs) should be prepared at a width of 8 or 17 cm with legible numbers and lettering.
 - Photographs should be clear with high contrast, presenting the actual observation described in the legend and in the text. Each legend should provide a complete description, being self-explanatory, including technique of preparation, information about the specimen and magnification.
 - Statistical analysis should be elaborated wherever it is necessary. Simplification of presentation by giving only numerical or % values should be avoided.
 - Fidelity of the techniques and reproducibility of the results, should be points of particular importance in the discussion section. Authors are advised to check the correctness of their methods and results carefully before writing an article. Probable or dubious explanations should be avoided.
 - Authors should not cite results submitted for publication in the reference section. Such results may be described briefly in the text with a note in parenthesis (submitted for publication by... authors, year).
 - References. Each article should address, list and discuss the entire spectrum of current publications relevant to its field.
 - By following these instructions, Authors will facilitate a more rapid review and processing of their manuscripts and will provide the readers with concise and useful papers.
6. Following review and acceptance, a manuscript is examined in language and style, and galley proofs are rapidly prepared. Second proofs are not sent unless required.
7. Authors should correct their galley proofs very carefully and preferably twice. An additional correction by a colleague always proves to be useful. Particular attention should be paid to chemical formulas, mathematical equations, symbols, medical nomenclature etc. Any system of correction marks can be used in a clear manner, preferably with a red pen. Additions or clarifications are allowed provided that they improve the presentation but do not bring new results (no fee).
8. Articles submitted to IN VIVO may be rejected without review if:
 - they do not fall within the journal's policy.
 - they do not follow the instructions for authors.
 - language is unclear.
 - results are not sufficient to support a final conclusion.
 - results are not objectively based on valid experiments.
 - they repeat results already published by the same or other authors before the submission to IV.
 - plagiarism is detected by plagiarism screening services.(Rejection rate (2016): 59%).
9. Authors who wish to prepare a review should contact the Managing Editor of the journal in order to get confirmation of interest in the particular topic of the review and to allow programming of space availability. The expression of interest by the Managing Editor does not necessarily imply acceptance of the review by the journal.
10. Authors may inquire information about the status of their manuscript(s) by calling the Editorial Office at +30-22950-53389, Monday to Friday 9.00-16.00 (Athens time), or by sending an e-mail to journals@iiar-anticancer.org.
11. Authors who wish to edit a special issue on a particular topic should contact the Managing Editor.
(This text is a combination of advice and suggestions contributed by Editors, Authors, Readers and the Managing Editor of IV).

ANTICANCER RESEARCH

International Journal of Cancer Research and Treatment

ISSN: 0250-7005

Volume 40, Number 1, January 2020

Contents

Review

Current Treatment of Colorectal Liver Metastasis as a Chronic Disease. N.M. DORR, M. BARTELS, M.H. MORGUL (*Leipzig; Münster, Germany*) 1

Experimental Studies

SAHA and EGCG Promote Apoptosis in Triple-negative Breast Cancer Cells, Possibly Through the Modulation of cIAP2. K.L. STEED, H.R. JORDAN, T.O. TOLLEFSBOL (*Birmingham, AL, USA*) 9

Genetic Polymorphisms in IL-10 Promoter Are Associated With Smoking and Prostate Cancer Risk in African Americans. M. ABBAS, T. MASSON, A. BRAD, M. KIBRAWJESHI, V. APPREY, Y. KANAAN, B. WILSON, G. DUNSTON, L. RICKS-SANTI, H. BRIM (*Washington, DC; Silver Spring, MD; Hanapee, VA, USA*) 27

High Expression of c-Met, PKC λ and ALDH1A3 Predicts a Poor Prognosis in Late-stage Breast Cancer. H. MOTOMURA, Y. NOZAKI, C. ONAGA, A. OZAKI, S. TAMORI, T.-A. SHIINA, S. KANAI, C. OHIRA, Y. HARA, Y. HARADA, R. TAKASAWA, T. HANAWA, S.-I. TANUMA, Y. MANO, T. SATO, K. SATO, K. AKIMOTO (*Chiba, Japan*) 35

Targeting Fibroblast Growth Factor Receptor (FGFR) and Phosphoinositide 3-kinase (PI3K) Signaling Pathways in Medulloblastoma Cell Lines. S. HOLZHAUSER, M. LUKOSEVICIUTE, T. ANDONOVA, R.G. URSU, T. DALIANIS, M. WICKSTRÖM, O.N. KOSTOPOULOU (*Stockholm; Sueden; Iasi, Romania*) 53

Cisplatin Induced the Expression of SEI1 (TRIP-Br1) Oncogene in Human Oral Squamous Cancer Cell Lines. J. LI, Z. VANGUNDY, M. POI (*Columbus, OH, USA*) 67

Contents continued on the back cover

ISSN (online): 1791-7530 / ISSN (print): 0250-7005

General Policy

- **ANTICANCER RESEARCH** is an independent international forum devoted to the rapid publication of original high quality articles and reviews on all aspects of experimental and clinical oncology. Prompt evaluation of all submitted articles in confidence and rapid publication within 1-2 months from acceptance are guaranteed.
- **ANTICANCER RESEARCH** is published monthly by the International Institute of Anticancer Research and is available online with Stanford University HighWire Press.
- **Editorial Office:** International Institute of Anticancer Research, 1st km Kapandritiou-Kalamou Rd., P.O. Box 22, Kapandriti, Attiki 19014, Greece. Tel: +30 22950 52945, Fax: +30 22950 53389.

U.S. Branch: Anticancer Research Inc., USA, 111 Bay Avenue, Highlands, NJ, USA.

- **E-mail:** journals@iia-anticancer.org; IIA WEBSITES: www.iia-anticancer.org and www.iiajournals.org

● Selection of Recent Articles

SAHA and EGCG Promote Apoptosis in Triple-negative Breast Cancer Cells, Possibly Through the Modulation of cIAP2. K.L. STEED, H.R. JORDAN, T.O. TOLLEFSBOL (*Birmingham, AL, USA*)

Targeting Fibroblast Growth Factor Receptor (FGFR) and Phosphoinositide 3-kinase (PI3K) Signaling Pathways in Medulloblastoma Cell Lines. S. HOLZHAUSER, M. LUKOSEVICIUTE, T. ANDONOVA, R.G. URSU, T. DALIANIS, M. WICKSTRÖM, O.N. KOSTOPOULOU (*Stockholm, Sweden; Iasi, Romania*)

Quantitative Structure–Cytotoxicity Relationship of 2-Arylazolychromones and 2-Triazolylchromones. J. NAGAI, H. SHI, N. SEZAKI, N. YOSHIDA, K. BANDOW, Y. UESAWA, H. SAKAGAMI, M. TOMOMURA, A. TOMOMURA, K. TAKAO, Y. SUGITA (*Tokyo; Sakado; Urayasu, Japan; Shanghai, PR China*)

High Expression of c-Met, PKC λ and ALDH1A3 Predicts a Poor Prognosis in Late-stage Breast Cancer. H. MOTOMURA, Y. NOZAKI, C. ONAGA, A. OZAKI, S. TAMORI, T.-A. SHIINA, S. KANAI, C. OHIRA, Y. HARA, Y. HARADA, R. TAKASAWA, T. HANAWA, S.-I. TANUMA, Y. MANO, T. SATO, K. SATO, K. AKIMOTO (*Chiba, Japan*)

Chronic Expanding Hematoma with a t(11;19)(q13;q13) Chromosomal Translocation. I. PANAGOPOULOS, L. GORUNOVA, I. KOSTOLOMOV, I. LOBMAIER, B. BJERKEHAGEN, S. HEIM (*Oslo, Norway*)

PGC-1 α Regulates Cell Proliferation and Invasion via AKT/GSK-3 β /catenin Pathway in Human Colorectal Cancer SW620 and SW480 cells. S.-H. YUN, J.-I. PARK (*Busan, Republic of Korea*)

Symptomatic Mandibular Fibrous Dysplasia With Concurrent Triple X- and Premutation Stage Fragile-X-Syndrome: Case Report With Short Literature Survey. R.E. FRIEDRICH, F.K. KOHLRUSCH, A.M. LUEBKE (*Hamburg, Germany*)

Cisplatin Induced the Expression of SEI1 (TRIP-Br1) Oncogene in Human Oral Squamous Cancer Cell Lines. J. LI, Z. VANGUNDY, M. POI (*Columbus, OH, USA*)

High Rate of Detection of Human ESPL1–HBV S Fusion Gene in Patients With HBV-related Liver Cancer: A Chinese Case–Control Study. B. HU, W. HUANG, R. WANG, W. ZANG, M. SU, H. LI, H. WANG, B. CAO, D. DENG, Q.Q. LI, J. JIANG (*Nanning; Hefei, PR China; Bethesda, MD, USA*)

Brief Pain Inventory (BPI) Health Survey After Midline Laparotomy With the Rectus Sheath Block (RSB) Analgesia: A Randomised Trial of Patients With Cancer and Benign Disease. V. KUOSMANEN, M. RUOTTINEN, D. RAHKOLA, I. SAIMANEN, V. KAARONEN, T. SELANDER, M. PURDY, H. KOKKI, M. KOKKI, M. ESKELINEN (*Kuopio, Finland*)

Current Treatment of Colorectal Liver Metastasis as a Chronic Disease. N.M. DORR, M. BARTELS, M.H. MORGUL (*Leipzig; Münster, Germany*)

Review of Recent Advances in Understanding the Role of Vitamin D Role in Reducing Cancer Risk: Breast, Colorectal, Prostate, and Overall Cancer. W.B. GRANT (*San Francisco, CA, USA*)

Chemoprevention of Prostate Cancer by Natural Agents: Evidence from Molecular and Epidemiological Studies. K. MOKBEL, U. WAZIR, K. MOKBEL (*London, UK*)

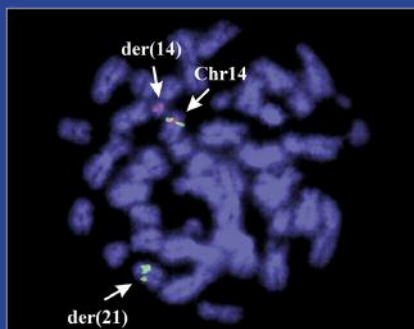
Adherence to Adjuvant Aromatase Inhibitor Therapy Among Postmenopausal Hispanic/Latino Women With Breast Cancer. A. PHILIPPOVSKIY, A. CAMPBELL, R. HEYDARIAN, B. CASTILLO, A.K. DWIVEDI, R. MCCALLUM, R. AGUILERA, S. GAUR, N. ZEINA (*El Paso, TX; Weston, FL, USA*)

Treatment Algorithm for Patients With Gastric Adenocarcinoma: An Austrian Consensus on Systemic Therapy. E. WÖLL, W. EISTERER, A. GERGER, T. KÜHR, G.W. PRAGER, H. RUMPOLD, H. ULRICH-PUR, U. VOGL, T. WINDER, L. WEISS, R. GREIL (*Zams; Klagenfurt; Graz; Wels; Vienna; Feldkirch; Salzburg, Austria*)

CANCER GENOMICS & PROTEOMICS

Volume 17, Number 1, January-February 2020

ISSN (online): 1790-6245



Published by the International Institute of Anticancer Research

Online ISSN: 1790-6245

General Policy

- **CANCER GENOMICS & PROTEOMICS (CGP)** welcomes submissions of original high quality articles and reviews on all aspects of the application of genomic and proteomic technologies to experimental and clinical cancer research. The journal's scientific spectrum includes: (a) molecular causes of carcinogenesis, cancer progression and metastasis; (b) structural and functional aspects of genes in the cancer cell; (c) advances in genomic and proteomic technologies applicable to cancer research; (d) anticancer drug design and drug development. A main aim of CGP is to ensure the prompt and confidential review, and rapid publication of original works and reviews, generally within 1-3 months from submission.
- CGP is published bimonthly by the **International Institute of Anticancer Research (IIAR)** and is available online only and open access with **Stanford University HighWire Press**. For more information please visit our website www.cgp.iiarjournals.org.
- **Editorial Office:** International Institute of Anticancer Research, 1st km Kapandritiou-Kalamou Rd., P.O. Box 22, Kapandriti, Attiki 19014, Greece. Tel: +30 22950 52945, Fax: +30 22950 53389.
U.S. Branch: Anticancer Research Inc., USA, 111 Bay Avenue, Highlands, NJ, USA.
- **E-mail:** journals@iiar-anticancer.org; IIAR WEBSITES: www.iiar-anticancer.org and www.iiarjournals.org

● Selection of Recent Articles

Duplex DNA from Sites of Helicase-Polymerase Uncoupling Links Non-B DNA Structure Formation to Replicative Stress. C. AMPARO, J. CLARK, V. BEDELL, J.L. MURATA-COLLINS, M. MARTELLA, F. PICHIORRI, E.F. WARNER, M. ABDELHAMID, Z.A.E. WALLER, S.S. SMITH (*Duarte, CA, USA; Norwich, UK*)

Pazopanib Inhibits Tumor Growth, Lymph-node Metastasis and Lymphangiogenesis of an Orthotopic Mouse of Colorectal Cancer. G. ZHU, M. ZHAO, Q. HAN, Y. TAN, Y. SUN, M. BOUVET, S.R. SINGH, J. YE, R.M. HOFFMAN (*San Diego, CA; Frederick, MD, USA; Fuzhou, PR China*)

KIF15 Expression in Tumor-associated Monocytes Is a Prognostic Biomarker in Hepatocellular Carcinoma. A. KITAGAWA, T. MASUDA, J. TAKAHASHI, T. TOBO, M. NODA, Y. KURODA, Q. HU, Y. KOUYAMA, Y. KOBAYASHI, S. KURAMITSU, K. SATO, A. FUJII, Y. YOSHIKAWA, H. WAKIYAMA, D. SHIMIZU, Y. TSURUDA, H. EGUCHI, Y. DOKI, M. MORI, K. MIMORI (*Oita; Osaka; Fukuoka, Japan*)

Chromosome Translocation t(14;21)(q11;q22) Activates Both OLIG1 and OLIG2 in Pediatric T-cell Lymphoblastic Malignancies and May Signify Adverse Prognosis. I. PANAGOPOULOS, L. GORUNOVA, I.M. RINVOLL JOHANNSDOTTIR, K. ANDERSEN, A. HOLTH, K. BEISKE, S. HEIM (*Oslo, Norway*)

Whole Transcriptomic Analysis of Apigenin-mediated Influence on TNF α Immuno-activated MDA-MB-231 Breast Cancer Cells. D. BAUER, E. MAZZIO, K.F.A. SOLIMAN (*Tallahassee, FL, USA*)

Significant Association Between the MiR146a Genotypes and Susceptibility to Childhood Acute Lymphoblastic Leukemia in Taiwan. J.-S. PEI, W.-S. CHANG, P.-C. HSU, C.-C. CHEN, Y.-T. CHIN, T.-L. HUANG, Y.-N. HSU, C.-C. KUO, Y.-C. WANG, C.-W. TSAI, C.-L. GONG, D.-T. BAU (*Taoyuan; Taichung, Taiwan, ROC*)

Clonal Relationship Between Lichen Sclerosus, Differentiated Vulvar Intraepithelial Neoplasia and Non HPV-related Vulvar Squamous Cell Carcinoma. A.-F.W. POUWER, L.C.G. VAN DEN EINDEN, M. VAN DER LINDEN, J.Y. HEHIR-KWA, J. YU, K.M. HENDRIKS, E.J. KAMPING, A. EIJKELENBOOM, L.F.A.G. MASSUGER, J. BULTEN, A.A.G. VAN TILBORG, J.A. DE HULLU, R.P. KUIPER (*Nijmegen; Utrecht, the Netherlands*)

Identification of Novel Prognosis and Prediction Markers in Advanced Prostate Cancer Tissues Based on Quantitative Proteomics. O.K. KWON, Y.-S. HA, A.Y. NA, S.Y. CHUN, T.G. KWON, J.N. LEE, S. LEE (*Daegu, Republic of Korea*)

BRD4-Regulated Molecular Targets in Mantle Cell Lymphoma: Insights into Targeted Therapeutic Approach. T. TSUKAMOTO, S. NAKAHATA, R. SATO, A. KANAI, M. NAKANO, Y. CHINEN, S. MAEGAWA-MATSUI, Y. MATSUMURA-KIMOTO, T. TAKIMOTO-SHIMOMURA, Y. MIZUNO, S. KUWAHARA-OTA, Y. KAWAJI, M. TANIWAKI, T. INABA, K. TASHIRO, K. MORISHITA, J. KURODA (*Kyoto; Miyazaki; Hiroshima, Japan*)

MicroRNAs Involved in Metastasis of Hepatocellular Carcinoma: Target Candidates, Functionality and Efficacy in Animal Models and Prognostic Relevance. U.H. WEIDLE, D. SCHMID, F. BIRZELE, U. BRINKMANN (*Penzberg, Germany; Basel, Switzerland*)

Increased Expression of Gremlin1 Promotes Proliferation and Epithelial Mesenchymal Transition in Gastric Cancer Cells and Correlates With Poor Prognosis of Patients With Gastric Cancer. Z. SUN, S. CAI, C. LIU, Y. CUI, J. JI, W.G. JIANG, L. YE (*Cardiff, UK; Beijing, PR China*)