

Quantitative Assessment of Interim PET/CT Could Have More Prognostic Relevance than Visual Assessment for Predicting Clinical Outcome of Extranodal Diffuse Large B Cell Lymphoma. D.W. BAEK, H.J. CHO, J.-H. KIM, S.K. SOHN, G.-Y. SONG, S.-Y. AHN, S.-H. JUNG, J.S. AHN, J.-J. LEE, H.-J. KIM, S.-Y. JEONG, C.M. HONG, J.-J. MIN, J.-H. MOON, D.-H. YANG ( <i>Daegu; Hwasun, Republic of Korea</i> ).....	2127
Azygos Vein Aneurysm Mimicking a Mediastinal Mass. C. SAVU, A. MELINTE, I. BALESU, N. BACALBASA ( <i>Bucharest, Romania</i> ).....	2135
Squamous Cell Carcinoma from Abscessed, Mature Cystic Ovarian Teratoma – A Case Report and Literature Review. N. BACALBASA, D. CRETOIU, I. HALMACIU, C. DIACONU, L. ILIESCU, S. DIMA, A. NEACSU, C. BALALAU, O.G. BRATU, I. BALESU ( <i>Bucharest; Târgu Mureş, Romania</i> ).....	2141
Endometriosis-associated Clear Cell Carcinoma of the Abdominal Wall After Caesarean Section: A Case Report and Review of the Literature. L. GIANNELLA, M. SERRI, E. MACCARONI, J. DI GIUSEPPE, G. DELLI CARPINI, R. BERARDI, F. SOPRACORDEVOLE, A. CIAVATTINI ( <i>Ancona; Aviano, Italy</i> ).....	2147
Vietnamese Case Series of Hirayama Disease. N.D. HUNG, N.M. DUC, N.T. VAN, L.T. DUNG, H.D. HA, N.D. HUE ( <i>Hanoi; Ho Chi Minh City; Hai Phong City, Vietnam</i> ).....	2153
A Case of Metastatic Iris Tumor Observed With Anterior Segment Optical Coherence Tomography Before and After Radiation Therapy. M. MITAMURA, S. KASE, Y. SUIMON, T. ITO, S. ISHIDA ( <i>Sapporo, Japan</i> ).....	2159
Laparoscopic-assisted Esophageal Bypass for T4b Esophageal Tumor as a Bridge to Definitive Therapy. S. DAVAKIS, A. SYLLAIOS, E. MPAILI, T. LIAKAKOS, A. CHARALABOPOULOS ( <i>Athens, Greece; Chelmsford, UK</i> ).....	2163
Successful Management of Esophageal Cancer With Perforation Using Bypass Surgery Followed by Definitive Chemoradiotherapy. M. OHSAWA, Y. HAMAI, Y. IBUKI, M. EMI, M. OKADA ( <i>Hiroshima, Japan</i> ).....	2169
Hysterectomy for Recurrent/Residual Cervical Cancer Following Definitive Radiotherapy. T. NAKASONE, Y. TAIRA, Y. SHIMOJI, Y. ARAKAKI, T. NAKAMOTO, T. OYAMA, W. KUDAKA, I. KANESHIMA, K. NISHIHARA, K. MEKARU, Y. AOKI ( <i>Okinawa, Japan</i> ).....	2173
Pleural Neutrophil-to-Lymphocyte Ratio May Be Associated With Early Disease Progression in Stage IV Non-small Cell Lung Cancer. J.U. LIM, C.D. YEO, H.W. KIM, H.S. KANG, C.K. PARK, J.S. KIM, J.W. KIM, S.J. KIM, S.H. LEE ( <i>Seoul, Republic of Korea</i> ).....	2179
The Influence of “Omental Cake” Presence on the Completeness of Cytoreduction in Advanced-stage Ovarian Cancer. N. BACALBASA, C. DIACONU, L. ILIESCU, C. SAVU, O.G. BRATU, C. BOLCA, D. CRETOIU, A. FILIPESCU, S. DIMA, C. BALALAU, I. BALESU ( <i>Bucharest, Romania</i> ).....	2187

Epidemiological Analysis of Zygomatic Bone Fractures in North-Western Romanian Population: A 10-Year Retrospective Study. P.A. ŢENT, R.-I. JUNCAR, M. JUNCAR ( <i>Oradea, Romania</i> ) .....	2049
Synchronous Bilateral Carcinoma of the Ureters. Report of a Case and a Short Discussion of the Literature. D. SIDIROPOULOS, F. KAPOGIANNIS, P. KRIPOURI, D. FILIPPOU, K. VLASSIS ( <i>Katerini; Athens, Greece</i> ).....	2057
Management of Peritoneal Carcinomatosis With Cytoreductive Surgery Combined With Intraperitoneal Chemohyperthermia at a Novel Italian Center. P. FAVIANA, L. BOLDRINI, B. MUSCO, M. FERRARI, A. GRECO, L. FORNARO, G. MASI, F. FORFORI, S. RICCI, A. BROGI, F. BASOLO, A. FALCONE, A. GADDUCCI, P.V. LIPPOLIS ( <i>Pisa, Italy</i> ) .....	2061
Hepatic Xanthogranuloma that Originated from a Liver Cyst and Mimicked a Malignant Tumor. E. ODA, T. BEPPU, K. KINOSHITA, K. YAMAMURA, N. SATO, H. YUKI, S. CHIYONAGA, T. MOTOHARA, Y. KOMOHARA, S. AKAHOSHI ( <i>Kumamoto, Japan</i> ) .....	2067
Radical Hysterectomy for Cervical Cancer in Patients With Uterine Prolapse. N. BACALBASA, I. HALMACIU, D. CRETOIU, C. BALALAU, C. DIACONU, L. ILIESCU, G. GORECKI, C. BOLCA, A. NEACSU, I. BALESCU ( <i>Bucharest; Târgu Mureş, Romania</i> ) .....	2073
Laparoscopic vs. Open Surgery for Stage II/III Colon Cancer Patients With Body Mass Index >25 kg/m <sup>2</sup> . K. KAZAMA, M. NUMATA, T. AOYAMA, A. ONODEARA, K. HARA, Y. ATSUMI, H. TAMAGAWA, T. GODAI, H. SAEKI, Y. SAUGUSA, H. OKAMOTO, M. SHIOZAWA, T. OSHIMA, N. YUKAWA, M. MASUDA, Y. RINO ( <i>Yokohama; Fujisawa, Japan</i> ) .....	2079
The Lymph Node Ratio Is an Independent Prognostic Factor in Esophageal Cancer Patients Who Receive Curative Surgery. N. YUKAWA, T. AOYAMA, H. TAMAGAWA, A. TAMAGAWA, Y. ATSUMI, S. KAWAHARA, Y. MAEZAWA, K. KANO, M. MURAKAWA, K. KAZAMA, M. NUMATA, T. OSHIMA, M. MASUDA, Y. RINO ( <i>Yokohama; Tokyo, Japan</i> ).....	2087
Serum CEA and CYFRA Levels in ALK-rearranged NSCLC Patients: Correlation With Distant Metastasis. T. NUMATA, T. ENDO, H. YANAI, K. OTA, Y. YAMAMOTO, K. SHIMIZU, H. YAMADA, K. HAYASHIHARA, S. OKAUCHI, H. SATOH, Y. YAMADA, T. TAMURA, K. SAITO, N. KIKUCHI, K. KURISHIMA, H. ISHIKAWA, H. WATANABE, T. SHIOZAWA, N. HIZAWA, Y. FUNAYAMA, S. HAYASHI, H. NAKAMURA, T. YAMASHITA ( <i>Ibaraki-machi; Hitachi; Hitachinaka; Tokai; Mito; Kasama; Tsuchiura, Tsukuba; Sakai-machi; Ami-machi; Toride, Japan</i> ).....	2095
Taller-than-wide Thyroid Nodules With Microcalcifications Are at High Risk of Malignancy. K.D. PAPAPOSTOLOU, C.C. EVANGELOPOULOU, I.A. IOANNIDIS, G.N. KASSI, K.S. MORFAS, N.I. KARAMINAS, H.J. KARGA ( <i>Athens, Greece</i> ) .....	2101
Correlation Between Demographic and Tumor Characteristics in Non-melanoma Skin Cancers Submitted to Mohs Micrographic Surgery. E.T.S. WEIMANN, C.M. BRANDÃO, L.R. TERZIAN, F.M. PASCHOAL, C.D.S. MACHADO FILHO, P.R. CRIADO ( <i>Boa Vista; Rio de Janeiro; Santo André, Brazil</i> ).....	2107
A Monocentric Retrospective Observational Study of Comorbidities in Patients Affected by Autoimmune Bullous Diseases. M. FERRANTI, G. GOBBO, G.T. CICOGNA, M. ALAIBAC ( <i>Padua, Italy</i> ).....	2113
Microsatellite Instability Correlated Inflammatory Markers and their Prognostic Value in the Rectal Cancer Following Neoadjuvant Chemoradiotherapy: A Hypothesis-generating Study. J.H. LEE, B.-H. KANG, C. SONG, S.-B. KANG, H.S. LEE, K.-W. LEE, E.K. CHIE, J.-S. KIM ( <i>Seongnam; Seoul, Republic of Korea</i> ).....	2119

Volume Delineation in Cervical Cancer With T2 and Diffusion-weighted MRI: Agreement on Volumes Between Observers. C. ROSA, A. DELLI PIZZI, A. AUGURIO, L. CARAVATTA, M. DI TOMMASO, E. MINCUZZI, S. CINALLI, R. BASILICO, A. PORRECA, M. DI NICOLA, D. GENOVESI ( <i>Chieti, Italy</i> ) .....	1981
Laparoscopic Total Gastrectomy for Remnant Gastric Cancer: A Single-institution Experience and Systematic Literature Review. M. OTA, M. IKEBE, Y. SHIN, M. KAGAWA, Y. MANO, T. NAKANOKO, Y. NAKASHIMA, H. UEHARA, M. SUGIYAMA, T. IGUCHI, K. SUGIMACHI, M. YAMAMOTO, M. MORITA, Y. TOH ( <i>Fukuoka, Japan</i> ) .....	1987
Prognostic Impact of the Neoadjuvant Rectal Score as Compared With the Tumor Regression Grade and Yield Pathologic TNM Stage in Patients With Locally Advanced Rectal Cancer After Neoadjuvant Chemoradiotherapy. J.H. BAEK, D.W. BAEK, B.W. KANG, H.J. KIM, S.Y. PARK, J.S. PARK, G.S. CHOI, J.G. KIM ( <i>Daegu, Republic of Korea</i> ) .....	1993
Clinicopathological Features in Elderly ALK-rearranged Non-small Cell Lung Cancer Patients. K. MIYAZAKI, S. SATO, T. KODAMA, T. NUMATA, T. ENDO, Y. YAMAMOTO, K. SHIMIZU, H. YAMADA, K. HAYASHIHARA, S. OKAUCHI, H. SATOH, Y. YAMADA, T. TAMURA, K. SAITO, N. KIKUCHI, K. KURISHIMA, H. ISHIKAWA, H. WATANABE, T. SHIOZAWA, N. HIZAWA, Y. FUNAYAMA, S. HAYASHI, H. NAKAMURA, T. YAMASHITA ( <i>Ryugasaki; Mito; Hitachi; Hitachinaka; Tokai; Kasama; Tsuchiura; Tsukuba; Sakai; Ami-machi; Toride, Japan</i> ) .....	2001
High-dose Radiotherapy for Oligo-progressive NSCLC Receiving EGFR Tyrosine Kinase Inhibitors: Real World Data. M. SANTARPIA, G. ALTAVILLA, N. BORSELLINO, A. GIRLANDO, G. MANCUSO, S. PERGOLIZZI, D. PIAZZA, A. PONTORIERO, M.R. VALERIO, V. GEBBIA ( <i>Messina; Palermo; Catania, Italy</i> ) .....	2009
Occurrence of Residual Cancer Within Re-excisions After Subcutaneous Mastectomy of Invasive Breast Cancer and Ductal Carcinoma <i>In Situ</i> – A Retrospective Analysis. C. PAHMEYER, A. SCHABLACK, D. RATIU, F. THANGARAJAH, S. LUDWIG, B. GRUETTNER, P. MALLMANN, W. MALTER, M. WARM, C. EICHLER ( <i>Cologne, Germany</i> ).....	2015
The Number of Harvested LNs Is an Independent Prognostic Factor in Lymph Node Metastasis-negative Patients Who Received Curative Esophagectomy. T. AOYAMA, Y. ATSUMI, S. KAWAHARA, H. TAMAGAWA, A. TAMAGAWA, Y. MAEZAWA, K. KANO, M. MURAKAWA, K. KAZAMA, M. NUMATA, T. OSHIMA, N. YUKAWA, M. MASUDA, Y. RINO ( <i>Yokohama; Tokyo, Japan</i> ) .....	2021
A Comparison of <sup>18</sup> F-FDG-PET/MRI and <sup>18</sup> F-FDG-PET/CT in the Cancer Staging of Locoregional Lymph Nodes. D. SLOUKA, J. KRCAL, T. KOSTLIVY, P. HRABACKA, A. SKALOVA, H. MIRKA, O. TOPOLCAN, R. KUCERA ( <i>Pilsen, Czech Republic</i> ) .....	2029
Implications of Low Serum Albumin as a Prognostic Factor of Long-term Outcomes in Patients With Breast Cancer. T. FUJII, S. TOKUDA, Y. NAKAZAWA, S. KUROZUMI, S. OBAYASHI, R. YAJIMA, K. SHIRABE ( <i>Gunma, Japan</i> ) .....	2033
Laparoscopic Treatment of a Hepatoduodenal Ligament Schwannoma With Infrared Indocyanine Green Fluorescence. K. TOMIOKA, T. AOKI, T. KOIZUMI, A. ELEWA, T. KUSANO, K. MATSUDA, K. NOGAKI, Y. TASHIRO, Y. WADA, T. HAKOZAKI, H. SHIBATA, T. HIRAI, T. YAMAZAKI, K. SAITO, Y. ENAMI, I. SUGIURA, Y. NAKAJIMA, J. ARAI, A. KAJIWARA, S. UOZUMI, Y. SHIMOZUMA, M. UCHIKOSHI, M. SAKAKI, H. YOSHIDA, S. MIURA, M. MURAKAMI ( <i>Tokyo, Japan; Cairo, Egypt</i> ).....	2037
A Rare Case of Inflammatory Myofibroblastic Tumor of the Prostate and Review of the Literature. M.S. KIM, S.-C. LIM ( <i>Gwangju, Republic of Korea</i> ) .....	2043

*Clinical Studies*

Radiological and Histopathological Features of Internal Tooth Resorption. T. KOEHNE, J. ZUSTIN, M. AMLING, R.E. FRIEDRICH ( <i>Hamburg, Germany</i> ).....	1875
Salvage Photon or Proton Radiotherapy for Oligo-recurrence in Regional Lymph Nodes After Surgery for Non-small Cell Lung Cancer. M. NAKAMURA, K. OHNISHI, H. ISHIKAWA, K. NAKAZAWA, T. SHIOZAWA, T. OKUMURA, I. SEKINE, Y. SATO, N. HIZAWA, H. SAKURAI ( <i>Ibaraki, Japan</i> ).....	1883
The ABO Blood Group Impacts the Survival of Patients Undergoing Pancreatoduodenectomy for Biliary Tract Cancer. S. MORI, T. AOKI, K. TAGO, T. SHIMIZU, N. HARADA, K.-H. PARK, Y. SAKURAOKA, T. SHIRAKI, Y. ISO, K. KUBOTA ( <i>Tochigi, Japan</i> ).....	1893
Preoperative C-Reactive Protein/Albumin Ratio as a Predictive Factor for Gallbladder Carcinoma. M. UTSUMI, H. AOKI, S. NAGAHISA, S. NISHIMURA, Y. UNE, Y. KIMURA, M. WATANABE, F. TANIGUCHI, T. ARATA, K. KATSUDA, K. TANAKAYA ( <i>Yamaguchi, Japan</i> ).....	1901
Survival After Stereotactic Radiosurgery (SRS) or Fractionated Stereotactic Radiotherapy (FSRT) for Cerebral Metastases in the Elderly. D. RADES, T. NGUYEN, O. BLANCK, S.E. SCHILD ( <i>Lübeck; Güstrow, Germany; Scottsdale, AZ, USA</i> ).....	1909
Treatment Outcome of Resection of Disseminated Peritoneal Metastases from Colorectal Cancer. G. OHIRA, H. MIYAUCHI, K. HAYANO, M. MARUYAMA, S. IMANISHI, T. TOCHIGI, T. MARUYAMA, T. HANAOKA, K. OKADA, H. MATSUBARA ( <i>Chiba, Japan</i> ).....	1915
Glasgow Prognostic Score (GPS) and Tumor Response as Biomarkers of Nivolumab Monotherapy in Thirdor Later-line Setting for Advanced Gastric Cancer. T. KUROSAKI, H. KAWAKAMI, S. MITANI, R. KAWABATA, T. TAKAHAMA, Y. NONAGASE, S. FUMITA, T. OZAKI, Y. CHIBA, T. TAMURA, K. NAKAGAWA ( <i>Osaka-Sayama; Sakai; Ikoma; Kishiwada, Japan</i> ).....	1921
Preoperative Nutritional Assessment Using the Controlling Nutritional Status Score to Predict Pancreatic Fistula After Pancreaticoduodenectomy. M. UTSUMI, H. AOKI, S. NAGAHISA, S. NISHIMURA, Y. UNE, Y. KIMURA, F. TANIGUCHI, T. ARATA, K. KATSUDA, K. TANAKAYA ( <i>Yamaguchi, Japan</i> ).....	1931
Impact of Antiplatelet and Anticoagulant Therapies on Platelet-related Prognostic Markers in Patients With Esophageal Cancer. Y. ISHIBASHI, H. TSUJIMOTO, K. KOUZU, Y. ITAZAKI, S. TSUCHIYA, S. FUJISHIMA, Y. YAGUCHI, H. SUGASAWA, S. NOMURA, N. ITO, M. HARADA, H. NAGATA, E. SHINTO, Y. KISHI, H. UENO ( <i>Saitama, Japan</i> ).....	1941
Endometrial Dating Method Detects Individual Maturation Sequences During the Secretory Phase. J. ALFER, A. FATTAHI, N. BLEISINGER, J. KRIEG, R. BEHRENS, R. DITTRICH, M.W. BECKMANN, A. HARTMANN, I. CLASSEN-LINKE, R.M. POPOVICI ( <i>Erlangen; Ravensburg; Amberg; Aachen; Munich, Germany; Tabriz, Iran</i> ).....	1951
Histopathological Features and Ann Arbor Stage in Periocular Lymphoma. M. ZSCHOCHE, A. ZIMPFER, B.O. SCHEEF, A.M. JÜNEMANN, R.F. GUTHOFF, C. JUNGHANSS, G. HILDEBRANDT, S. EMMERT, A. ERBERSDOBLER, G. KUNDT, V. KAKKASSERY ( <i>Rostock; Luebeck, Germany</i> ).....	1965
Prognostic Significance of Histological Subtype in Soft Tissue Sarcoma With Distant Metastasis. H. TSUCHIE, M. EMORI, N. MIYAKOSHI, H. NAGASAWA, K. OKADA, Y. MURAHASHI, E. MIZUSHIMA, J. SHIMIZU, T. YAMASHITA, Y. SHIMADA ( <i>Akita; Sapporo, Japan</i> ).....	1975

An Analysis of <i>ESR2</i> and <i>CYP19A1</i> Gene Expression Levels in Women With Endometriosis. T. SZAFLIK, B. SMOLARZ, B. MROCZKOWSKA, B. KULIG, M. SOJA, H. ROMANOWICZ, M. BRYŚ, E. FORMA, K. SZYŁŁO (Lodz, Poland) .....	1765
Germline Mutations in DNA Repair Genes in Patients With Metastatic Castration-resistant Prostate Cancer. K. HOLECKOVA, K. BALUCHOVA, M. HIVES, L. MUSAK, J. KLIMENT SR., M. SKERENOVA (Martin, Slovak Republic; Vienna, Austria) .....	1773
Characterization of Optimal Strain, Frequency and Duration of Mechanical Loading on Skeletal Myotubes' Biological Responses. A. MOUSTOGIANNI, A. PHILIPPOU, E. ZEVOLIS, O. TASO, A. CHATZIGEORGIOU, M. KOUTSILIERIS (Athens, Greece) .....	1779
The <i>In Vivo</i> Radiosensitizing Effect of Magnolol on Tumor Growth of Hepatocellular Carcinoma. Y.-S. CHEN, R. SUN, W.-L. CHEN, Y.-C. YAU, F.-T. HSU, J.-G. CHUNG, C. TSAI, C.-L. HSIEH, Y.-M. CHIU, J.-H. CHEN (Changhua; Taipei; Lukang; Taichung; Kaohsiung; New Taipei City, Taiwan, ROC) .....	1789
Ultrasonographic Follow-up of the Multistep Protocol for Prostate Cancer Induction in Wistar Rats. A.I. FAUSTINO-ROCHA, F. SEIXAS, R. FERREIRA, J. SILVA, M.J. PIRES, M. FARDILHA, M. GINJA, P.A. OLIVEIRA (Lisbon; Vila Real; Aveiro, Portugal) .....	1797
Increased Expression of p-GSK3 $\beta$ Predicts Poor Survival in T –III/IV Stage OSCC Patients. B. KUMAR VELMURUGAN, C.-W. CHIU, Y.-M. LIN, M. BHARATH, C.-M. YEH, Y.-E. CHEN, C.-M. CHUNG, S.-H. LIN (Taichung; Changhua; Miaoli, Taiwan, ROC; Da Nang, Vietnam).....	1805
Biofunctional Feed Supplemented With By-products of Olive Oil Production Improves Tissue Antioxidant Profile of Lambs. S. MAKRI, S. RAFTOPOULOU, I. KAFANTARIS, B. KOTSAMPASI, V. CHRISTODOULOU, C. NEPKA, A.S. VESKOUKIS, D. KOURETAS (Larissa; Giannitsa, Greece).....	1811
<i>Picrasma quassioides</i> Extract Elevates the Cervical Cancer Cell Apoptosis Through ROS-Mitochondrial Axis Activated p38 MAPK Signaling Pathway. Y.-X. GONG, Y. LIU, Y.-H. JIN, M.-H. JIN, Y.-H. HAN, J. LI, G.-N. SHEN, D.-P. XIE, C.-X. REN, L.-Y. YU, D.-S. LEE, J.-S. KIM, Y.-J. JO, J. KWON, J. LEE, Y.H. PARK, T. KWON, Y.-D. CUI, H.-N. SUN (Daqing, PR China; Daegu; Jeonbuk; Cheongju; Gyeonggi; Seoul, Republic of Korea).....	1823
Protective Effects of <i>Pinus halepensis</i> Bark Extract and Nicotine on Cigarette Smoke-induced Oxidative Stress in Keratinocytes. P. PAVLOU, I. ANTONIADOU, A. PERAKI, A. VITSOS, P. DALLAS, D. MOSTRATOS, G. DELICONSTANTINOS, G. PAPAIOANNOU, S.A. GRANDO, M. RALLIS (Athens, Greece; Irvine, CA, USA) .....	1835
Synergistic Anti-cancer Activity of MH-30 in a Murine Melanoma Model Treated With Cisplatin and its Alleviated Effects Against Cisplatin-induced Toxicity in Mice. H.-R. PARK, S.-K. JO, H.-H. CHO, U. JUNG (Jeongeup, Republic of Korea).....	1845
Osteogenic Evaluation of Hydroxyapatite Scaffold Loaded With Dexamethasone in Femoral Drill Holes. M.-H. PARK, S.J. JANG, S.H. CHOI (Cheongju, Republic of Korea) .....	1857
Effects of Testosterone on the Expression of Connexin 26 and Connexin 43 in the Uterus of Rats During Early Pregnancy. D.A.M. KAMAL, S.F. IBRAHIM, M.H. MOKHTAR (Kuala Lumpur; Kota Kinabalu, Malaysia) .....	1863
Association Between HMGB1 and Thrombogenesis in a Hyperlipaemia-induced Microminipig Model of Atherosclerosis. S. KAKE, H. KAWAGUCHI, T. NAGASATO, T. YAMADA, T. ITO, I. MARUYAMA, N. MIURA, A. TANIMOTO (Yamaguchi; Okayama; Kagoshima; Kanagawa, Japan).....	1871

# ANTICANCER RESEARCH

International Journal of Cancer Research and Treatment

ISSN: 0250-7005

Volume 40, Number 1, January 2020

## Contents

### Review

Current Treatment of Colorectal Liver Metastasis as a Chronic Disease. N.M. DORR, M. BARTELS, M.H. MORGUL (*Leipzig; Münster, Germany*)..... 1

### Experimental Studies

SAHA and EGCG Promote Apoptosis in Triple-negative Breast Cancer Cells, Possibly Through the Modulation of cIAP2. K.L. STEED, H.R. JORDAN, T.O. TOLLEFSBOL (*Birmingham, AL, USA*)..... 9

Genetic Polymorphisms in IL-10 Promoter Are Associated With Smoking and Prostate Cancer Risk in African Americans. M. ABBAS, T. MASSON, A. BRAD, M. KIBRAWJESHI, V. APPREY, Y. KANAAN, B. WILSON, G. DUNSTON, L. RICKS-SANTI, H. BRIM (*Washington, DC; Silver Spring, MD; Hanapee, VA, USA*)..... 27

High Expression of c-Met, PKC $\lambda$  and ALDH1A3 Predicts a Poor Prognosis in Late-stage Breast Cancer. H. MOTOMURA, Y. NOZAKI, C. ONAGA, A. OZAKI, S. TAMORI, T.-A. SHIINA, S. KANAI, C. OHIRA, Y. HARA, Y. HARADA, R. TAKASAWA, T. HANAWA, S.-I. TANUMA, Y. MANO, T. SATO, K. SATO, K. AKIMOTO (*Chiba, Japan*)..... 35

Targeting Fibroblast Growth Factor Receptor (FGFR) and Phosphoinositide 3-kinase (PI3K) Signaling Pathways in Medulloblastoma Cell Lines. S. HOLZHAUSER, M. LUKOSEVICIUTE, T. ANDONOVA, R.G. URSU, T. DALIANIS, M. WICKSTRÖM, O.N. KOSTOPOULOU (*Stockholm; Sueden; Iasi, Romania*)..... 53

Cisplatin Induced the Expression of SEI1 (TRIP-Br1) Oncogene in Human Oral Squamous Cancer Cell Lines. J.LI, Z. VANGUNDY, M. POI (*Columbus, OH, USA*)..... 67

Contents continued on the back cover

ISSN (online): 1791-7530 / ISSN (print): 0250-7005

## General Policy

- **ANTICANCER RESEARCH** is an independent international forum devoted to the rapid publication of original high quality articles and reviews on all aspects of experimental and clinical oncology. Prompt evaluation of all submitted articles in confidence and rapid publication within 1-2 months from acceptance are guaranteed.
- **ANTICANCER RESEARCH** is published monthly by the International Institute of Anticancer Research and is available online with Stanford University HighWire Press.
- **Editorial Office:** International Institute of Anticancer Research, 1st km Kapandritiou-Kalamou Rd., P.O. Box 22, Kapandriti, Attiki 19014, Greece. Tel: +30 22950 52945, Fax: +30 22950 53389.

**U.S. Branch:** Anticancer Research Inc., USA, 111 Bay Avenue, Highlands, NJ, USA.

- **E-mail:** journals@iia-anticancer.org; IIA WEBSITES: www.iia-anticancer.org and www.iiajournals.org

## ● Selection of Recent Articles

SAHA and EGCG Promote Apoptosis in Triple-negative Breast Cancer Cells, Possibly Through the Modulation of cIAP2. K.L. STEED, H.R. JORDAN, T.O. TOLLEFSBOL (*Birmingham, AL, USA*)

Targeting Fibroblast Growth Factor Receptor (FGFR) and Phosphoinositide 3-kinase (PI3K) Signaling Pathways in Medulloblastoma Cell Lines. S. HOLZHAUSER, M. LUKOSEVICIUTE, T. ANDONOVA, R.G. URSU, T. DALIANIS, M. WICKSTRÖM, O.N. KOSTOPOULOU (*Stockholm, Sweden; Iasi, Romania*)

Quantitative Structure–Cytotoxicity Relationship of 2-Arylazolychromones and 2-Triazolylchromones. J. NAGAI, H. SHI, N. SEZAKI, N. YOSHIDA, K. BANDOW, Y. UESAWA, H. SAKAGAMI, M. TOMOMURA, A. TOMOMURA, K. TAKAO, Y. SUGITA (*Tokyo; Sakado; Urayasu, Japan; Shanghai, PR China*)

High Expression of c-Met, PKC $\lambda$  and ALDH1A3 Predicts a Poor Prognosis in Late-stage Breast Cancer. H. MOTOMURA, Y. NOZAKI, C. ONAGA, A. OZAKI, S. TAMORI, T.-A. SHIINA, S. KANAI, C. OHIRA, Y. HARA, Y. HARADA, R. TAKASAWA, T. HANAWA, S.-I. TANUMA, Y. MANO, T. SATO, K. SATO, K. AKIMOTO (*Chiba, Japan*)

Chronic Expanding Hematoma with a t(11;19)(q13;q13) Chromosomal Translocation. I. PANAGOPOULOS, L. GORUNOVA, I. KOSTOLOMOV, I. LOBMAIER, B. BJERKEHAGEN, S. HEIM (*Oslo, Norway*)

PGC-1 $\alpha$  Regulates Cell Proliferation and Invasion via AKT/GSK-3 $\beta$ /catenin Pathway in Human Colorectal Cancer SW620 and SW480 cells. S.-H. YUN, J.-I. PARK (*Busan, Republic of Korea*)

Symptomatic Mandibular Fibrous Dysplasia With Concurrent Triple X- and Premutation Stage Fragile-X-Syndrome: Case Report With Short Literature Survey. R.E. FRIEDRICH, F.K. KOHLRUSCH, A.M. LUEBKE (*Hamburg, Germany*)

Cisplatin Induced the Expression of SEI1 (TRIP-Br1) Oncogene in Human Oral Squamous Cancer Cell Lines. J. LI, Z. VANGUNDY, M. POI (*Columbus, OH, USA*)

High Rate of Detection of Human ESPL1–HBV S Fusion Gene in Patients With HBV-related Liver Cancer: A Chinese Case–Control Study. B. HU, W. HUANG, R. WANG, W. ZANG, M. SU, H. LI, H. WANG, B. CAO, D. DENG, Q.Q. LI, J. JIANG (*Nanning; Hefei, PR China; Bethesda, MD, USA*)

Brief Pain Inventory (BPI) Health Survey After Midline Laparotomy With the Rectus Sheath Block (RSB) Analgesia: A Randomised Trial of Patients With Cancer and Benign Disease. V. KUOSMANEN, M. RUOTTINEN, D. RAHKOLA, I. SAIMANEN, V. KAARONEN, T. SELANDER, M. PURDY, H. KOKKI, M. KOKKI, M. ESKELINEN (*Kuopio, Finland*)

Current Treatment of Colorectal Liver Metastasis as a Chronic Disease. N.M. DORR, M. BARTELS, M.H. MORGUL (*Leipzig; Münster, Germany*)

Review of Recent Advances in Understanding the Role of Vitamin D Role in Reducing Cancer Risk: Breast, Colorectal, Prostate, and Overall Cancer. W.B. GRANT (*San Francisco, CA, USA*)

Chemoprevention of Prostate Cancer by Natural Agents: Evidence from Molecular and Epidemiological Studies. K. MOKBEL, U. WAZIR, K. MOKBEL (*London, UK*)

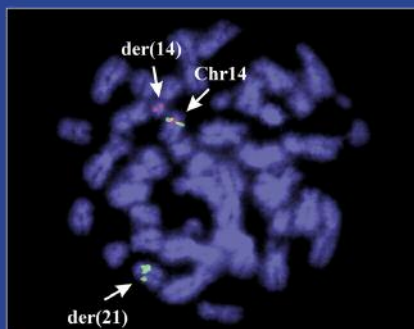
Adherence to Adjuvant Aromatase Inhibitor Therapy Among Postmenopausal Hispanic/Latino Women With Breast Cancer. A. PHILIPOVSKIY, A. CAMPBELL, R. HEYDARIAN, B. CASTILLO, A.K. DWIVEDI, R. MCCALLUM, R. AGUILERA, S. GAUR, N. ZEINA (*El Paso, TX; Weston, FL, USA*)

Treatment Algorithm for Patients With Gastric Adenocarcinoma: An Austrian Consensus on Systemic Therapy. E. WÖLL, W. EISTERER, A. GERGER, T. KÜHR, G.W. PRAGER, H. RUMPOLD, H. ULRICH-PUR, U. VOGL, T. WINDER, L. WEISS, R. GREIL (*Zams; Klagenfurt; Graz; Wels; Vienna; Feldkirch; Salzburg, Austria*)

# CANCER GENOMICS & PROTEOMICS

Volume 17, Number 1, January-February 2020

ISSN (online): 1790-6245



Published by the International Institute of Anticancer Research

Online ISSN: 1790-6245

## General Policy

- **CANCER GENOMICS & PROTEOMICS (CGP)** welcomes submissions of original high quality articles and reviews on all aspects of the application of genomic and proteomic technologies to experimental and clinical cancer research. The journal's scientific spectrum includes: (a) molecular causes of carcinogenesis, cancer progression and metastasis; (b) structural and functional aspects of genes in the cancer cell; (c) advances in genomic and proteomic technologies applicable to cancer research; (d) anticancer drug design and drug development. A main aim of CGP is to ensure the prompt and confidential review, and rapid publication of original works and reviews, generally within 1-3 months from submission.
- CGP is published bimonthly by the **International Institute of Anticancer Research (IIAR)** and is available online only and open access with **Stanford University HighWire Press**. For more information please visit our website [www.cgp.iiarjournals.org](http://www.cgp.iiarjournals.org).
- **Editorial Office:** International Institute of Anticancer Research, 1st km Kapandritiou-Kalamou Rd., P.O. Box 22, Kapandriti, Attiki 19014, Greece. Tel: +30 22950 52945, Fax: +30 22950 53389.  
**U.S. Branch:** Anticancer Research Inc., USA, 111 Bay Avenue, Highlands, NJ, USA.
- **E-mail:** [journals@iiar-anticancer.org](mailto:journals@iiar-anticancer.org); IIAR WEBSITES: [www.iiar-anticancer.org](http://www.iiar-anticancer.org) and [www.iiarjournals.org](http://www.iiarjournals.org)

## ● Selection of Recent Articles

Duplex DNA from Sites of Helicase-Polymerase Uncoupling Links Non-B DNA Structure Formation to Replicative Stress. C. AMPARO, J. CLARK, V. BEDELL, J.L. MURATA-COLLINS, M. MARTELLA, F. PICHIORRI, E.F. WARNER, M. ABDELHAMID, Z.A.E. WALLER, S.S. SMITH (*Duarte, CA, USA; Norwich, UK*)

Pazopanib Inhibits Tumor Growth, Lymph-node Metastasis and Lymphangiogenesis of an Orthotopic Mouse of Colorectal Cancer. G. ZHU, M. ZHAO, Q. HAN, Y. TAN, Y. SUN, M. BOUVET, S.R. SINGH, J. YE, R.M. HOFFMAN (*San Diego, CA; Frederick, MD, USA; Fuzhou, PR China*)

KIF15 Expression in Tumor-associated Monocytes Is a Prognostic Biomarker in Hepatocellular Carcinoma. A. KITAGAWA, T. MASUDA, J. TAKAHASHI, T. TOBO, M. NODA, Y. KURODA, Q. HU, Y. KOUYAMA, Y. KOBAYASHI, S. KURAMITSU, K. SATO, A. FUJII, Y. YOSHIKAWA, H. WAKIYAMA, D. SHIMIZU, Y. TSURUDA, H. EGUCHI, Y. DOKI, M. MORI, K. MIMORI (*Oita; Osaka; Fukuoka, Japan*)

Chromosome Translocation t(14;21)(q11;q22) Activates Both OLIG1 and OLIG2 in Pediatric T-cell Lymphoblastic Malignancies and May Signify Adverse Prognosis. I. PANAGOPOULOS, L. GORUNOVA, I.M. RINVOLL JOHANNSDOTTIR, K. ANDERSEN, A. HOLTH, K. BEISKE, S. HEIM (*Oslo, Norway*)

Whole Transcriptomic Analysis of Apigenin-mediated Influence on TNF $\alpha$  Immuno-activated MDA-MB-231 Breast Cancer Cells. D. BAUER, E. MAZZIO, K.F.A. SOLIMAN (*Tallahassee, FL, USA*)

Significant Association Between the MiR146a Genotypes and Susceptibility to Childhood Acute Lymphoblastic Leukemia in Taiwan. J.-S. PEI, W.-S. CHANG, P.-C. HSU, C.-C. CHEN, Y.-T. CHIN, T.-L. HUANG, Y.-N. HSU, C.-C. KUO, Y.-C. WANG, C.-W. TSAI, C.-L. GONG, D.-T. BAU (*Taoyuan; Taichung, Taiwan, ROC*)

Clonal Relationship Between Lichen Sclerosus, Differentiated Vulvar Intraepithelial Neoplasia and Non HPV-related Vulvar Squamous Cell Carcinoma. A.-F.W. POUWER, L.C.G. VAN DEN EINDEN, M. VAN DER LINDEN, J.Y. HEHIR-KWA, J. YU, K.M. HENDRIKS, E.J. KAMPING, A. EIJKELENBOOM, L.F.A.G. MASSUGER, J. BULTEN, A.A.G. VAN TILBORG, J.A. DE HULLU, R.P. KUIPER (*Nijmegen; Utrecht, the Netherlands*)

Identification of Novel Prognosis and Prediction Markers in Advanced Prostate Cancer Tissues Based on Quantitative Proteomics. O.K. KWON, Y.-S. HA, A.Y. NA, S.Y. CHUN, T.G. KWON, J.N. LEE, S. LEE (*Daegu, Republic of Korea*)

BRD4-Regulated Molecular Targets in Mantle Cell Lymphoma: Insights into Targeted Therapeutic Approach. T. TSUKAMOTO, S. NAKAHATA, R. SATO, A. KANAI, M. NAKANO, Y. CHINEN, S. MAEGAWA-MATSUI, Y. MATSUMURA-KIMOTO, T. TAKIMOTO-SHIMOMURA, Y. MIZUNO, S. KUWAHARA-OTA, Y. KAWAJI, M. TANIWAKI, T. INABA, K. TASHIRO, K. MORISHITA, J. KURODA (*Kyoto; Miyazaki; Hiroshima, Japan*)

MicroRNAs Involved in Metastasis of Hepatocellular Carcinoma: Target Candidates, Functionality and Efficacy in Animal Models and Prognostic Relevance. U.H. WEIDLE, D. SCHMID, F. BIRZELE, U. BRINKMANN (*Penzberg, Germany; Basel, Switzerland*)

Increased Expression of Gremlin1 Promotes Proliferation and Epithelial Mesenchymal Transition in Gastric Cancer Cells and Correlates With Poor Prognosis of Patients With Gastric Cancer. Z. SUN, S. CAI, C. LIU, Y. CUI, J. JI, W.G. JIANG, L. YE (*Cardiff, UK; Beijing, PR China*)