

ANTICANCER RESEARCH

International Journal of Cancer Research and Treatment

ISSN: 0250-7005

Volume 40, Number 1, January 2020

Contents

Review

Current Treatment of Colorectal Liver Metastasis as a Chronic Disease. N.M. DORR, M. BARTELS, M.H. MORGUL (*Leipzig; Münster, Germany*)..... 1

Experimental Studies

SAHA and EGCG Promote Apoptosis in Triple-negative Breast Cancer Cells, Possibly Through the Modulation of cIAP2. K.L. STEED, H.R. JORDAN, T.O. TOLLEFSBOL (*Birmingham, AL, USA*)..... 9

Genetic Polymorphisms in IL-10 Promoter Are Associated With Smoking and Prostate Cancer Risk in African Americans. M. ABBAS, T. MASSON, A. BRAD, M. KIBRAWJESHI, V. APPREY, Y. KANAAN, B. WILSON, G. DUNSTON, L. RICKS-SANTI, H. BRIM (*Washington, DC; Silver Spring, MD; Hanapee, VA, USA*)..... 27

High Expression of c-Met, PKC λ and ALDH1A3 Predicts a Poor Prognosis in Late-stage Breast Cancer. H. MOTOMURA, Y. NOZAKI, C. ONAGA, A. OZAKI, S. TAMORI, T.-A. SHIINA, S. KANAI, C. OHIRA, Y. HARA, Y. HARADA, R. TAKASAWA, T. HANAWA, S.-I. TANUMA, Y. MANO, T. SATO, K. SATO, K. AKIMOTO (*Chiba, Japan*)..... 35

Targeting Fibroblast Growth Factor Receptor (FGFR) and Phosphoinositide 3-kinase (PI3K) Signaling Pathways in Medulloblastoma Cell Lines. S. HOLZHAUSER, M. LUKOSEVICIUTE, T. ANDONOVA, R.G. URSU, T. DALIANIS, M. WICKSTRÖM, O.N. KOSTOPOULOU (*Stockholm; Sueden; Iasi, Romania*)..... 53

Cisplatin Induced the Expression of SEI1 (TRIP-Br1) Oncogene in Human Oral Squamous Cancer Cell Lines. J.LI, Z. VANGUNDY, M. POI (*Columbus, OH, USA*)..... 67

Contents continued on the back cover

ISSN (online): 1791-7530 / ISSN (print): 0250-7005

Generally Policy

● **ANTICANCER RESEARCH** is an independent international forum devoted to the rapid publication of original high quality articles and reviews on all aspects of experimental and clinical oncology. Prompt evaluation of all submitted articles in confidence and rapid publication within 1-2 months from acceptance are guaranteed.

● **ANTICANCER RESEARCH** is published monthly by the International Institute of Anticancer Research and is available online with Stanford University HighWire Press.

● **Editorial Office:** International Institute of Anticancer Research, 1st km Kapandritiou-Kalamou Rd., P.O. Box 22, Kapandriti, Attiki 19014, Greece. Tel: +30 22950 52945, Fax: +30 22950 53389.

U.S. Branch: Anticancer Research Inc., USA, 111 Bay Avenue, Highlands, NJ, USA.

● **E-mail:** journals@iia-anticancer.org; IIAR WEBSITES: www.iia-anticancer.org and www.iiajournals.org

● Selection of Recent Articles

SAHA and EGCG Promote Apoptosis in Triple-negative Breast Cancer Cells, Possibly Through the Modulation of cIAP2. K.L. STEED, H.R. JORDAN, T.O. TOLLEFSBOL (*Birmingham, AL, USA*)

Targeting Fibroblast Growth Factor Receptor (FGFR) and Phosphoinositide 3-kinase (PI3K) Signaling Pathways in Medulloblastoma Cell Lines. S. HOLZHAUSER, M. LUKOSEVICIUTE, T. ANDONOVA, R.G. URSU, T. DALIANIS, M. WICKSTRÖM, O.N. KOSTOPOULOU (*Stockholm, Sweden; Iasi, Romania*)

Quantitative Structure–Cytotoxicity Relationship of 2-Arylazolychromones and 2-Triazolylchromones. J. NAGAI, H. SHI, N. SEZAKI, N. YOSHIDA, K. BANDOW, Y. UESAWA, H. SAKAGAMI, M. TOMOMURA, A. TOMOMURA, K. TAKAO, Y. SUGITA (*Tokyo; Sakado; Urayasu, Japan; Shanghai, PR China*)

High Expression of c-Met, PKC λ and ALDH1A3 Predicts a Poor Prognosis in Late-stage Breast Cancer. H. MOTOMURA, Y. NOZAKI, C. ONAGA, A. OZAKI, S. TAMORI, T.-A. SHIINA, S. KANAI, C. OHIRA, Y. HARA, Y. HARADA, R. TAKASAWA, T. HANAWA, S.-I. TANUMA, Y. MANO, T. SATO, K. SATO, K. AKIMOTO (*Chiba, Japan*)

Chronic Expanding Hematoma with a t(11;19)(q13;q13) Chromosomal Translocation. I. PANAGOPOULOS, L. GORUNOVA, I. KOSTOLOMOV, I. LOBMAIER, B. BJERKEHAGEN, S. HEIM (*Oslo, Norway*)

PGC-1 α Regulates Cell Proliferation and Invasion via AKT/GSK-3 β /catenin Pathway in Human Colorectal Cancer SW620 and SW480 cells. S.-H. YUN, J.-I. PARK (*Busan, Republic of Korea*)

Symptomatic Mandibular Fibrous Dysplasia With Concurrent Triple X- and Premutation Stage Fragile-X-Syndrome: Case Report With Short Literature Survey. R.E. FRIEDRICH, F.K. KOHLRUSCH, A.M. LUEBKE (*Hamburg, Germany*)

Cisplatin Induced the Expression of SEI1 (TRIP-Br1) Oncogene in Human Oral Squamous Cancer Cell Lines. J. LI, Z. VANGUNDY, M. POI (*Columbus, OH, USA*)

High Rate of Detection of Human ESPL1–HBV S Fusion Gene in Patients With HBV-related Liver Cancer: A Chinese Case–Control Study. B. HU, W. HUANG, R. WANG, W. ZANG, M. SU, H. LI, H. WANG, B. CAO, D. DENG, Q.Q. LI, J. JIANG (*Nanning; Hefei, PR China; Bethesda, MD, USA*)

Brief Pain Inventory (BPI) Health Survey After Midline Laparotomy With the Rectus Sheath Block (RSB) Analgesia: A Randomised Trial of Patients With Cancer and Benign Disease. V. KUOSMANEN, M. RUOTTINEN, D. RAHKOLA, I. SAIMANEN, V. KAARONEN, T. SELANDER, M. PURDY, H. KOKKI, M. KOKKI, M. ESKELINEN (*Kuopio, Finland*)

Current Treatment of Colorectal Liver Metastasis as a Chronic Disease. N.M. DORR, M. BARTELS, M.H. MORGUL (*Leipzig; Münster, Germany*)

Review of Recent Advances in Understanding the Role of Vitamin D Role in Reducing Cancer Risk: Breast, Colorectal, Prostate, and Overall Cancer. W.B. GRANT (*San Francisco, CA, USA*)

Chemoprevention of Prostate Cancer by Natural Agents: Evidence from Molecular and Epidemiological Studies. K. MOKBEL, U. WAZIR, K. MOKBEL (*London, UK*)

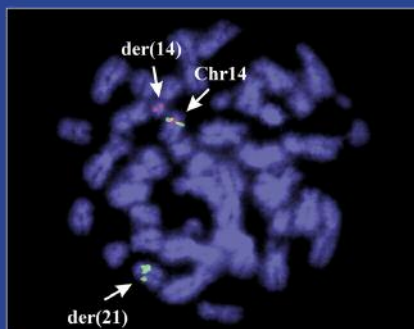
Adherence to Adjuvant Aromatase Inhibitor Therapy Among Postmenopausal Hispanic/Latino Women With Breast Cancer. A. PHILIPOVSKIY, A. CAMPBELL, R. HEYDARIAN, B. CASTILLO, A.K. DWIVEDI, R. MCCALLUM, R. AGUILERA, S. GAUR, N. ZEINA (*El Paso, TX; Weston, FL, USA*)

Treatment Algorithm for Patients With Gastric Adenocarcinoma: An Austrian Consensus on Systemic Therapy. E. WÖLL, W. EISTERER, A. GERGER, T. KÜHR, G.W. PRAGER, H. RUMPOLD, H. ULRICH-PUR, U. VOGL, T. WINDER, L. WEISS, R. GREIL (*Zams; Klagenfurt; Graz; Wels; Vienna; Feldkirch; Salzburg, Austria*)

CANCER GENOMICS & PROTEOMICS

Volume 17, Number 1, January-February 2020

ISSN (online): 1790-6245



Published by the International Institute of Anticancer Research

Online ISSN: 1790-6245

General Policy

- **CANCER GENOMICS & PROTEOMICS (CGP)** welcomes submissions of original high quality articles and reviews on all aspects of the application of genomic and proteomic technologies to experimental and clinical cancer research. The journal's scientific spectrum includes: (a) molecular causes of carcinogenesis, cancer progression and metastasis; (b) structural and functional aspects of genes in the cancer cell; (c) advances in genomic and proteomic technologies applicable to cancer research; (d) anticancer drug design and drug development. A main aim of CGP is to ensure the prompt and confidential review, and rapid publication of original works and reviews, generally within 1-3 months from submission.
- CGP is published bimonthly by the **International Institute of Anticancer Research (IIAR)** and is available online only and open access with **Stanford University HighWire Press**. For more information please visit our website www.cgp.iiarjournals.org.
- **Editorial Office:** International Institute of Anticancer Research, 1st km Kapandritiou-Kalamou Rd., P.O. Box 22, Kapandriti, Attiki 19014, Greece. Tel: +30 22950 52945, Fax: +30 22950 53389.
U.S. Branch: Anticancer Research Inc., USA, 111 Bay Avenue, Highlands, NJ, USA.
- **E-mail:** journals@iiar-anticancer.org; IIAR WEBSITES: www.iiar-anticancer.org and www.iiarjournals.org

● Selection of Recent Articles

Duplex DNA from Sites of Helicase-Polymerase Uncoupling Links Non-B DNA Structure Formation to Replicative Stress. C. AMPARO, J. CLARK, V. BEDELL, J.L. MURATA-COLLINS, M. MARTELLA, F. PICHIORRI, E.F. WARNER, M. ABDELHAMID, Z.A.E. WALLER, S.S. SMITH (*Duarte, CA, USA; Norwich, UK*)

Pazopanib Inhibits Tumor Growth, Lymph-node Metastasis and Lymphangiogenesis of an Orthotopic Mouse of Colorectal Cancer. G. ZHU, M. ZHAO, Q. HAN, Y. TAN, Y. SUN, M. BOUVET, S.R. SINGH, J. YE, R.M. HOFFMAN (*San Diego, CA; Frederick, MD, USA; Fuzhou, PR China*)

KIF15 Expression in Tumor-associated Monocytes Is a Prognostic Biomarker in Hepatocellular Carcinoma. A. KITAGAWA, T. MASUDA, J. TAKAHASHI, T. TOBO, M. NODA, Y. KURODA, Q. HU, Y. KOUYAMA, Y. KOBAYASHI, S. KURAMITSU, K. SATO, A. FUJII, Y. YOSHIKAWA, H. WAKIYAMA, D. SHIMIZU, Y. TSURUDA, H. EGUCHI, Y. DOKI, M. MORI, K. MIMORI (*Oita; Osaka; Fukuoka, Japan*)

Chromosome Translocation t(14;21)(q11;q22) Activates Both OLIG1 and OLIG2 in Pediatric T-cell Lymphoblastic Malignancies and May Signify Adverse Prognosis. I. PANAGOPOULOS, L. GORUNOVA, I.M. RINVOLL JOHANNSDOTTIR, K. ANDERSEN, A. HOLTH, K. BEISKE, S. HEIM (*Oslo, Norway*)

Whole Transcriptomic Analysis of Apigenin-mediated Influence on TNF α Immuno-activated MDA-MB-231 Breast Cancer Cells. D. BAUER, E. MAZZIO, K.F.A. SOLIMAN (*Tallahassee, FL, USA*)

Significant Association Between the MiR146a Genotypes and Susceptibility to Childhood Acute Lymphoblastic Leukemia in Taiwan. J.-S. PEI, W.-S. CHANG, P.-C. HSU, C.-C. CHEN, Y.-T. CHIN, T.-L. HUANG, Y.-N. HSU, C.-C. KUO, Y.-C. WANG, C.-W. TSAI, C.-L. GONG, D.-T. BAU (*Taoyuan; Taichung, Taiwan, ROC*)

Clonal Relationship Between Lichen Sclerosus, Differentiated Vulvar Intraepithelial Neoplasia and Non HPV-related Vulvar Squamous Cell Carcinoma. A.-F.W. POUWER, L.C.G. VAN DEN EINDEN, M. VAN DER LINDEN, J.Y. HEHIR-KWA, J. YU, K.M. HENDRIKS, E.J. KAMPING, A. EIJKELENBOOM, L.F.A.G. MASSUGER, J. BULTEN, A.A.G. VAN TILBORG, J.A. DE HULLU, R.P. KUIPER (*Nijmegen; Utrecht, the Netherlands*)

Identification of Novel Prognosis and Prediction Markers in Advanced Prostate Cancer Tissues Based on Quantitative Proteomics. O.K. KWON, Y.-S. HA, A.Y. NA, S.Y. CHUN, T.G. KWON, J.N. LEE, S. LEE (*Daegu, Republic of Korea*)

BRD4-Regulated Molecular Targets in Mantle Cell Lymphoma: Insights into Targeted Therapeutic Approach. T. TSUKAMOTO, S. NAKAHATA, R. SATO, A. KANAI, M. NAKANO, Y. CHINEN, S. MAEGAWA-MATSUI, Y. MATSUMURA-KIMOTO, T. TAKIMOTO-SHIMOMURA, Y. MIZUNO, S. KUWAHARA-OTA, Y. KAWAJI, M. TANIWAKI, T. INABA, K. TASHIRO, K. MORISHITA, J. KURODA (*Kyoto; Miyazaki; Hiroshima, Japan*)

MicroRNAs Involved in Metastasis of Hepatocellular Carcinoma: Target Candidates, Functionality and Efficacy in Animal Models and Prognostic Relevance. U.H. WEIDLE, D. SCHMID, F. BIRZELE, U. BRINKMANN (*Penzberg, Germany; Basel, Switzerland*)

Increased Expression of Gremlin1 Promotes Proliferation and Epithelial Mesenchymal Transition in Gastric Cancer Cells and Correlates With Poor Prognosis of Patients With Gastric Cancer. Z. SUN, S. CAI, C. LIU, Y. CUI, J. JI, W.G. JIANG, L. YE (*Cardiff, UK; Beijing, PR China*)

Human Gene Sequences in SARS-CoV-2 and Other Viruses. S. LEHRER, P.H. RHEINSTEIN (<i>New York, NY; Severna Park, MD, USA</i>).....	1633
A New Method for Testing Filtration Efficiency of Mask Materials Under Sneeze-like Pressure. L. XIAO, H. SAKAGAMI, N. MIWA (<i>Tokyo; Saitama; Hiroshima, Japan</i>)	1637
<i>Clinical Studies</i>	
Endoplasmic Reticulum Stress Markers in SARS-COV-2 Infection and Pneumonia: Case-Control Study. A. KÖSELER, R. SABIRLI, T. GÖREN, İ. TÜRKÇÜER, Ö. KURT (<i>Denizli; Kars; Istanbul, Turkey</i>)	1645
Breast Cancer and COVID-19: The Effect of Fear on Patients' Decision-making Process. G. VANNI, M. MATERAZZO, M. PELLICCIARO, S. INGALLINELLA, M. RHO, F. SANTORI, M. COTESTA, J. CASPI, A. MAKAROVA, C.A. PISTOLESE, O.C. BUONOMO (<i>Rome, Italy</i>).....	1651
Tor Vergata University-Hospital in the Beginning of COVID-19-Era: Experience and Recommendation for Breast Cancer Patients. O.C. BUONOMO, M. MATERAZZO, M. PELLICCIARO, J. CASPI, E. PICCIONE, G. VANNI (<i>Rome, Italy</i>).....	1661
Breast Cancer Surgery During the COVID-19 Pandemic: An Observational Clinical Study of the Breast Surgery Clinic at Ospedale Policlinico San Martino – Genoa, Italy. P. FREGATTI, M. GIPPONI, M. GIACCHINO, M. SPARAVIGNA, F. MURELLI, M.L. TONI, M.T. CALABRÒ, L. ORSINO, D. FRIEDMAN (<i>Genoa, Italy</i>).....	1667
Radiation Therapy During the COVID-19 Pandemic: Experience from Beijing, China. W. WANG, X. LIU, F. ZHANG, J. QIU, K. HU (<i>Beijing, PR China</i>)	1675
COVID-19 Incidentally Detected on PET/CT During Work-up for Locally Advanced Head and Neck Cancer. A. MO, N.P. BRODIN, W.A. TOMI, M.K. GARG, R. KABARRITI (<i>New York, NY, USA</i>)	1681
The Effect of Coronavirus (COVID-19) on Breast Cancer Teamwork: A Multicentric Survey. G. VANNI, M. MATERAZZO, F. SANTORI, M. PELLICCIARO, M. COSTESTA, P. ORSARIA, F. CATTADORI, C.A. PISTOLESE, T. PERRETTA, M. CHIOCCHI, R. MEUCCI, F. LAMACCHIA, M. ASSOIGNA, J. CASPI, A.V. GRANAI, A. DE MAJO, A. CHIARAVALLI, M.R. D'ANGELILLO, R. BARBARINO, S. INGALLINELLA, L. MORANDO, S. DALLI, I. PORTARENA, V. ALTOMARE, G. TAZZIOLI, O.C. BUONOMO (<i>Rome; Piacenza; Pozzilli; Modena, Italy</i>)	1685
Lockdown During COVID-19: The Greek Success. D. MORIS, D. SCHIZAS (<i>Athens, Greece</i>)	1695