

ANTICANCER RESEARCH

International Journal of Cancer Research and Treatment

ISSN: 0250-7005

Volume 40, Number 1, January 2020

Contents

Review

Current Treatment of Colorectal Liver Metastasis as a Chronic Disease. N.M. DORR, M. BARTELS, M.H. MORGUL (*Leipzig; Münster, Germany*) 1

Experimental Studies

SAHA and EGCG Promote Apoptosis in Triple-negative Breast Cancer Cells, Possibly Through the Modulation of cIAP2. K.L. STEED, H.R. JORDAN, T.O. TOLLEFSBOL (*Birmingham, AL, USA*) 9

Genetic Polymorphisms in IL-10 Promoter Are Associated With Smoking and Prostate Cancer Risk in African Americans. M. ABBAS, T. MASSON, A. BRAD, M. KIBRAWJESHI, V. APPREY, Y. KANAAN, B. WILSON, G. DUNSTON, L. RICKS-SANTI, H. BRIM (*Washington, DC; Silver Spring, MD; Hanapee, VA, USA*) 27

High Expression of c-Met, PKC λ and ALDH1A3 Predicts a Poor Prognosis in Late-stage Breast Cancer. H. MOTOMURA, Y. NOZAKI, C. ONAGA, A. OZAKI, S. TAMORI, T.-A. SHIINA, S. KANAI, C. OHIRA, Y. HARA, Y. HARADA, R. TAKASAWA, T. HANAWA, S.-I. TANUMA, Y. MANO, T. SATO, K. SATO, K. AKIMOTO (*Chiba, Japan*) 35

Targeting Fibroblast Growth Factor Receptor (FGFR) and Phosphoinositide 3-kinase (PI3K) Signaling Pathways in Medulloblastoma Cell Lines. S. HOLZHAUSER, M. LUKOSEVICIUTE, T. ANDONOVA, R.G. URSU, T. DALIANIS, M. WICKSTRÖM, O.N. KOSTOPOULOU (*Stockholm; Sueden; Iasi, Romania*) 53

Cisplatin Induced the Expression of SEI1 (TRIP-Br1) Oncogene in Human Oral Squamous Cancer Cell Lines. J.LI, Z. VANGUNDY, M. POI (*Columbus, OH, USA*) 67

Contents continued on the back cover

ISSN (online): 1791-7530 / ISSN (print): 0250-7005

General Policy

● **ANTICANCER RESEARCH** is an independent international forum devoted to the rapid publication of original high quality articles and reviews on all aspects of experimental and clinical oncology. Prompt evaluation of all submitted articles in confidence and rapid publication within 1-2 months from acceptance are guaranteed.

● **ANTICANCER RESEARCH** is published monthly by the International Institute of Anticancer Research and is available online with Stanford University HighWire Press.

● **Editorial Office:** International Institute of Anticancer Research, 1st km Kapandritiou-Kalamou Rd., P.O. Box 22, Kapandriti, Attiki 19014, Greece. Tel: +30 22950 52945, Fax: +30 22950 53389.

U.S. Branch: Anticancer Research Inc., USA, 111 Bay Avenue, Highlands, NJ, USA.

● **E-mail:** journals@iia-anticancer.org; IIA **WEBSITES:** www.iia-anticancer.org and www.iiajournals.org

● Selection of Recent Articles

SAHA and EGCG Promote Apoptosis in Triple-negative Breast Cancer Cells, Possibly Through the Modulation of cIAP2. K.L. STEED, H.R. JORDAN, T.O. TOLLEFSBOL (*Birmingham, AL, USA*)

Targeting Fibroblast Growth Factor Receptor (FGFR) and Phosphoinositide 3-kinase (PI3K) Signaling Pathways in Medulloblastoma Cell Lines. S. HOLZHAUSER, M. LUKOSEVICIUTE, T. ANDONOVA, R.G. URSU, T. DALIANIS, M. WICKSTRÖM, O.N. KOSTOPOULOU (*Stockholm, Sweden; Iasi, Romania*)

Quantitative Structure–Cytotoxicity Relationship of 2-Arylazolychromones and 2-Triazolylchromones. J. NAGAI, H. SHI, N. SEZAKI, N. YOSHIDA, K. BANDOW, Y. UESAWA, H. SAKAGAMI, M. TOMOMURA, A. TOMOMURA, K. TAKAO, Y. SUGITA (*Tokyo; Sakado; Urayasu, Japan; Shanghai, PR China*)

High Expression of c-Met, PKC λ and ALDH1A3 Predicts a Poor Prognosis in Late-stage Breast Cancer. H. MOTOMURA, Y. NOZAKI, C. ONAGA, A. OZAKI, S. TAMORI, T.-A. SHIINA, S. KANAI, C. OHIRA, Y. HARA, Y. HARADA, R. TAKASAWA, T. HANAWA, S.-I. TANUMA, Y. MANO, T. SATO, K. SATO, K. AKIMOTO (*Chiba, Japan*)

Chronic Expanding Hematoma with a t(11;19)(q13;q13) Chromosomal Translocation. I. PANAGOPOULOS, L. GORUNOVA, I. KOSTOLOMOV, I. LOBMAIER, B. BJERKEHAGEN, S. HEIM (*Oslo, Norway*)

PGC-1 α Regulates Cell Proliferation and Invasion via AKT/GSK-3 β /catenin Pathway in Human Colorectal Cancer SW620 and SW480 cells. S.-H. YUN, J.-I. PARK (*Busan, Republic of Korea*)

Symptomatic Mandibular Fibrous Dysplasia With Concurrent Triple X- and Premutation Stage Fragile-X-Syndrome: Case Report With Short Literature Survey. R.E. FRIEDRICH, F.K. KOHLRUSCH, A.M. LUEBKE (*Hamburg, Germany*)

Cisplatin Induced the Expression of SEI1 (TRIP-Br1) Oncogene in Human Oral Squamous Cancer Cell Lines. J. LI, Z. VANGUNDY, M. POI (*Columbus, OH, USA*)

High Rate of Detection of Human ESPL1–HBV S Fusion Gene in Patients With HBV-related Liver Cancer: A Chinese Case–Control Study. B. HU, W. HUANG, R. WANG, W. ZANG, M. SU, H. LI, H. WANG, B. CAO, D. DENG, Q.Q. LI, J. JIANG (*Nanning; Hefei, PR China; Bethesda, MD, USA*)

Brief Pain Inventory (BPI) Health Survey After Midline Laparotomy With the Rectus Sheath Block (RSB) Analgesia: A Randomised Trial of Patients With Cancer and Benign Disease. V. KUOSMANEN, M. RUOTTINEN, D. RAHKOLA, I. SAIMANEN, V. KAARONEN, T. SELANDER, M. PURDY, H. KOKKI, M. KOKKI, M. ESKELINEN (*Kuopio, Finland*)

Current Treatment of Colorectal Liver Metastasis as a Chronic Disease. N.M. DORR, M. BARTELS, M.H. MORGUL (*Leipzig; Münster, Germany*)

Review of Recent Advances in Understanding the Role of Vitamin D Role in Reducing Cancer Risk: Breast, Colorectal, Prostate, and Overall Cancer. W.B. GRANT (*San Francisco, CA, USA*)

Chemoprevention of Prostate Cancer by Natural Agents: Evidence from Molecular and Epidemiological Studies. K. MOKBEL, U. WAZIR, K. MOKBEL (*London, UK*)

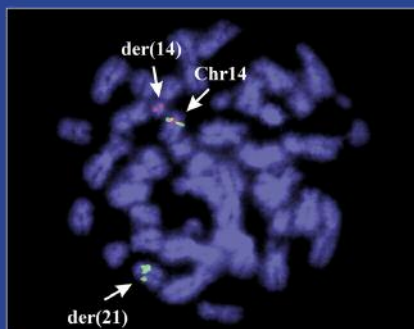
Adherence to Adjuvant Aromatase Inhibitor Therapy Among Postmenopausal Hispanic/Latino Women With Breast Cancer. A. PHILIPOVSKIY, A. CAMPBELL, R. HEYDARIAN, B. CASTILLO, A.K. DWIVEDI, R. MCCALLUM, R. AGUILERA, S. GAUR, N. ZEINA (*El Paso, TX; Weston, FL, USA*)

Treatment Algorithm for Patients With Gastric Adenocarcinoma: An Austrian Consensus on Systemic Therapy. E. WÖLL, W. EISTERER, A. GERGER, T. KÜHR, G.W. PRAGER, H. RUMPOLD, H. ULRICH-PUR, U. VOGL, T. WINDER, L. WEISS, R. GREIL (*Zams; Klagenfurt; Graz; Wels; Vienna; Feldkirch; Salzburg, Austria*)

CANCER GENOMICS & PROTEOMICS

Volume 17, Number 1, January-February 2020

ISSN (online): 1790-6245



Published by the International Institute of Anticancer Research

Online ISSN: 1790-6245

General Policy

- **CANCER GENOMICS & PROTEOMICS (CGP)** welcomes submissions of original high quality articles and reviews on all aspects of the application of genomic and proteomic technologies to experimental and clinical cancer research. The journal's scientific spectrum includes: (a) molecular causes of carcinogenesis, cancer progression and metastasis; (b) structural and functional aspects of genes in the cancer cell; (c) advances in genomic and proteomic technologies applicable to cancer research; (d) anticancer drug design and drug development. A main aim of CGP is to ensure the prompt and confidential review, and rapid publication of original works and reviews, generally within 1-3 months from submission.
- CGP is published bimonthly by the **International Institute of Anticancer Research (IIAR)** and is available online only and open access with **Stanford University HighWire Press**. For more information please visit our website www.cgp.iiarjournals.org.
- **Editorial Office:** International Institute of Anticancer Research, 1st km Kapandritiou-Kalamou Rd., P.O. Box 22, Kapandriti, Attiki 19014, Greece. Tel: +30 22950 52945, Fax: +30 22950 53389.
U.S. Branch: Anticancer Research Inc., USA, 111 Bay Avenue, Highlands, NJ, USA.
- **E-mail:** journals@iiar-anticancer.org; IIAR WEBSITES: www.iiar-anticancer.org and www.iiarjournals.org

● Selection of Recent Articles

Duplex DNA from Sites of Helicase-Polymerase Uncoupling Links Non-B DNA Structure Formation to Replicative Stress. C. AMPARO, J. CLARK, V. BEDELL, J.L. MURATA-COLLINS, M. MARTELLA, F. PICHIORRI, E.F. WARNER, M. ABDELHAMID, Z.A.E. WALLER, S.S. SMITH (*Duarte, CA, USA; Norwich, UK*)

Pazopanib Inhibits Tumor Growth, Lymph-node Metastasis and Lymphangiogenesis of an Orthotopic Mouse of Colorectal Cancer. G. ZHU, M. ZHAO, Q. HAN, Y. TAN, Y. SUN, M. BOUVET, S.R. SINGH, J. YE, R.M. HOFFMAN (*San Diego, CA; Frederick, MD, USA; Fuzhou, PR China*)

KIF15 Expression in Tumor-associated Monocytes Is a Prognostic Biomarker in Hepatocellular Carcinoma. A. KITAGAWA, T. MASUDA, J. TAKAHASHI, T. TOBO, M. NODA, Y. KURODA, Q. HU, Y. KOUYAMA, Y. KOBAYASHI, S. KURAMITSU, K. SATO, A. FUJII, Y. YOSHIKAWA, H. WAKIYAMA, D. SHIMIZU, Y. TSURUDA, H. EGUCHI, Y. DOKI, M. MORI, K. MIMORI (*Oita; Osaka; Fukuoka, Japan*)

Chromosome Translocation t(14;21)(q11;q22) Activates Both OLIG1 and OLIG2 in Pediatric T-cell Lymphoblastic Malignancies and May Signify Adverse Prognosis. I. PANAGOPOULOS, L. GORUNOVA, I.M. RINVOLL JOHANNSDOTTIR, K. ANDERSEN, A. HOLTH, K. BEISKE, S. HEIM (*Oslo, Norway*)

Whole Transcriptomic Analysis of Apigenin-mediated Influence on TNF α Immuno-activated MDA-MB-231 Breast Cancer Cells. D. BAUER, E. MAZZIO, K.F.A. SOLIMAN (*Tallahassee, FL, USA*)

Significant Association Between the MiR146a Genotypes and Susceptibility to Childhood Acute Lymphoblastic Leukemia in Taiwan. J.-S. PEI, W.-S. CHANG, P.-C. HSU, C.-C. CHEN, Y.-T. CHIN, T.-L. HUANG, Y.-N. HSU, C.-C. KUO, Y.-C. WANG, C.-W. TSAI, C.-L. GONG, D.-T. BAU (*Taoyuan; Taichung, Taiwan, ROC*)

Clonal Relationship Between Lichen Sclerosus, Differentiated Vulvar Intraepithelial Neoplasia and Non HPV-related Vulvar Squamous Cell Carcinoma. A.-F.W. POUWER, L.C.G. VAN DEN EINDEN, M. VAN DER LINDEN, J.Y. HEHIR-KWA, J. YU, K.M. HENDRIKS, E.J. KAMPING, A. EIJKELENBOOM, L.F.A.G. MASSUGER, J. BULTEN, A.A.G. VAN TILBORG, J.A. DE HULLU, R.P. KUIPER (*Nijmegen; Utrecht, the Netherlands*)

Identification of Novel Prognosis and Prediction Markers in Advanced Prostate Cancer Tissues Based on Quantitative Proteomics. O.K. KWON, Y.-S. HA, A.Y. NA, S.Y. CHUN, T.G. KWON, J.N. LEE, S. LEE (*Daegu, Republic of Korea*)

BRD4-Regulated Molecular Targets in Mantle Cell Lymphoma: Insights into Targeted Therapeutic Approach. T. TSUKAMOTO, S. NAKAHATA, R. SATO, A. KANAI, M. NAKANO, Y. CHINEN, S. MAEGAWA-MATSUI, Y. MATSUMURA-KIMOTO, T. TAKIMOTO-SHIMOMURA, Y. MIZUNO, S. KUWAHARA-OTA, Y. KAWAJI, M. TANIWAKI, T. INABA, K. TASHIRO, K. MORISHITA, J. KURODA (*Kyoto; Miyazaki; Hiroshima, Japan*)

MicroRNAs Involved in Metastasis of Hepatocellular Carcinoma: Target Candidates, Functionality and Efficacy in Animal Models and Prognostic Relevance. U.H. WEIDLE, D. SCHMID, F. BIRZELE, U. BRINKMANN (*Penzberg, Germany; Basel, Switzerland*)

Increased Expression of Gremlin1 Promotes Proliferation and Epithelial Mesenchymal Transition in Gastric Cancer Cells and Correlates With Poor Prognosis of Patients With Gastric Cancer. Z. SUN, S. CAI, C. LIU, Y. CUI, J. JI, W.G. JIANG, L. YE (*Cardiff, UK; Beijing, PR China*)

CONSOLI, L. TAMBÈ, M.S. PENNISI, S. DI GREGORIO, C. ROMANO, C. TOMARCHIO, F. DI RAIMONDO, F. STAGNO (<i>Catania, Italy</i>).....	1481
Right Upper Abdominal Resections in Advanced Stage Ovarian Cancer. N. BACALBASA, I. BALESCU, C. DIACONU, L. ILIESCU, A. FILIPESCU, C. POP, S. DIMA, M. VILCU, I. BREZEAN (<i>Bucharest, Romania</i>).....	1487
A Randomized Control Trial of Oral Sucrose Solution for Prevention of Hypoglycemia in High Risk Infants. S. SURACHAIDUNGTAVIL, P. CHANVORACHOTE, N. SUKSUMMEK (<i>Bangkok, Thailand</i>).....	1493
Treatment of Fournier’s Gangrene With Vacuum-assisted Closure Therapy as Enhanced Recovery Treatment Modality. A. SYLLAIOS, S. DAVAKIS, L. KARYDAKIS, M. VAILAS, N. GARMPIS, E. MPAILI, E. KYROS, E. FELEKOURAS, A. PAPALAMPROS (<i>Athens, Greece</i>).....	1499
Evaluation of the Differences Between Measurements in Multiple Institutions and Calculation Modeled by Representative Beam Data in Prostate VMAT Plan. H. GOTO, H. MIZUNO, Y. AKINO, M. ISONO, Y. TANAKA, N. MASAI, T. YAMAMOTO, M. KOIZUMI (<i>Osaka; Kyoto, Japan</i>).....	1503
Occurrence of Hematological Malignancy in Long-term Survivors With Advanced Thymic Cancer. K. KAIRA, I. NARUSE, S. SHINOMIYA, H. KAGAMU (<i>Saitama; Gunma, Japan</i>).....	1511
Retrospective Analysis of Mortality Cases in Advanced and Metastatic Solid Tumors With Concurrent Prerenal Azotemia. T.-Y. LIAO, C.-C. LIAW (<i>Taoyuan, Taiwan, ROC</i>).....	1515
Distal Pancreatectomy <i>En Bloc</i> With Splenectomy, Celiac Axis and Portal Vein Resection Followed by Arterial Reconstruction Using a Cadaveric Graft – A Case Report and Literature Review. V. BRASOVEANU, I. BARBU, F. ICHIM, I. BALESCU, N. BACALBASA (<i>Bucharest, Romania</i>).....	1521
Debulking Surgery for Moderately Differentiated Neuroendocrine Gastric Carcinoma – A Case Report and Literature Review. N. BACALBASA, I. HALMACIU, C. BOLCA, A. NEACSU, D. CRETOIU, C. BALALAU, C. DIACONU, L. ILIESCU, A. FILIPESCU, C. POP, I. BALESCU (<i>Bucharest; Târgu Mureş, Romania</i>).....	1527
The Clinical Significance of Lymphovascular Invasion in Gastric Cancer. H. FUJIKAWA, K. KOUMORI, H. WATANABE, K. KANO, Y. SHIMODA, T. AOYAMA, T. YAMADA, T. HIROSHI, N. YAMAMOTO, H. CHO, M. SHIOZAWA, T. YOSHIKAWA, S. MORINAGA, Y. RINO, M. MASUDA, T. OGATA, T. OSHIMA (<i>Yokohama; Tokyo, Japan</i>).....	1533
Efficacy of Axitinib After Nivolumab Failure in Metastatic Renal Cell Carcinoma. H. ISHIHARA, T. TAKAGI, T. KONDO, H. FUKUDA, H. TACHIBANA, K. YOSHIDA, J. IIZUKA, M. OKUMI, H. ISHIDA, K. TANABE (<i>Tokyo, Japan</i>).....	1541
Re-irradiation With Carbon Ion Radiotherapy for Pelvic Rectal Cancer Recurrences in Patients Previously Irradiated to the Pelvis. A. BARCELLINI, V. VITOLO, L. COBIANCHI, A. PELOSO, A. VANOLI, A. MIRANDOLA, A. FACOETTI, M.R. FIORE, A. IANNALFI, B. VISCHIONI, F. CUCCIA, S. RONCHI, M. BONORA, G. RIVA, R. PETRUCCI, E. D’IPPOLITO, F. DAL MAS, L. PREDA, F. VALVO (<i>Pavia; Palermo; Rome, Italy; Geneva, Switzerland; Lincoln, UK</i>).....	1547
Lack of Relevant Haemogram Changes During Percutaneous Radiotherapy of Localised Prostate Cancer. F. ZWICKER, B. SWARTMAN, P.E. HUBER, K. HERFARTH, J. DEBUS, H. HAUSWALD (<i>Heidelberg, Germany</i>).....	1555
Errata	1565

Residual Site Radiotherapy After Immunochemotherapy in Primary Mediastinal B-Cell Lymphoma: A Monoinstitutional Retrospective Study. V. DE SANCTIS, A. DI ROCCO, M.C. COX, M. VALERIANI, F.P. CONGEDI, D. ANZELLINI, M. MASSARO, G. VULLO, G. FACONDO, F. DE GIACOMO, M. ALFÒ, D. PROSPERI, P. PIZZICHINI, S. PELLICCIA, A. TAFURI, M. MARTELLI, M. FALCHETTO OSTI (Rome, Italy)	1407
Association of Genetic Polymorphisms With Afatinib-induced Diarrhoea. R. SOGAWA, C. NAKASHIMA, T. NAKAMURA, K. TAKEUCHI, S. KIMURA, K. KOMIYA, Y. NARISAWA, S. KIMURA, N. SUEOKA-ARAGANE (Saga, Japan)	1415
Elderly Patients With Single Brain Metastasis – Overall Survival After Surgery Plus Whole-Brain Irradiation and a Radiation Boost. D. RADES, T. NGUYEN, S.E. SCHILD (Lübeck, Germany; Scottsdale, AZ, USA)	1421
Vestiges of Ossified Spheno-occipital Suture in an Elderly Patient With Down Syndrome and Lateral Skull Base Fracture. R.E. FRIEDRICH, F.K. KOHLRUSCH, U. GRZYSKA (Hamburg, Germany)	1427
Low-level X Chromosome Mosaicism: A Common Finding in Women Undergoing IVF. S. ZACHAKI, E. KOUVIDI, A. PANTOU, H. TSAROUHA, A. MITRAKOS, G. TOUNTA, I. CHARALAMPOUS, K.N. MANOLA, E. KANAVAKIS, A. MAVROU (Athens, Greece)	1433
Combination of Pembrolizumab With Platinum-containing Chemotherapy for Pleomorphic Carcinoma of the Lung. S. OKAUCHI, Y. SASATANI, T. SHIOZAWA, H. YAMADA, K. MIYAZAKI, N. TAKAYASHIKI, H. SATOH (Mito; Tsukuba; Hitachinaka; Ryugasaki, Japan)	1439
Cervical Pathology Following HPV Vaccination in Greece: A 10-year HeCPA Observational Cohort Study. E. PARASKEVAIDIS, A. ATHANASIOU, M. PARASKEVAIDI, E. BILIRAKIS, G. GALAZIOS, E. KONTOMANOLIS, K. DINAS, A. LOUFOPOULOS, M. NASIOUTZIKI, I. KALOGIANNIDIS, A. ATHANASIADIS, A. PAPANIKOLAOU, A. VATOPOULOU, G. GRIMBIZIS, D. TSOLAKIDIS, A. DAPONTE, G. VALASOULIS, S. GRITZELI, G. MICHAIL, G. ADONAKIS, M. PASCHOPOULOS, O. TSONIS, M.-E. ANAFORIDOU, A. BATISTATOU, M. KYRGIU (Ioannina; Athens; Alexandroupolis; Thessaloniki; Larissa; Patras, Greece; London, UK)	1445
Tolerability and Efficacy of Bevacizumab Monotherapy in Older Patients With Recurrent Ovarian Cancer. D. SHINTANI, H. YOSHIDA, A. YABUNO, K. FUJIWARA (Saitama, Japan)	1451
Long-term Survival With Afatinib in a Patient With Lung Adenocarcinoma Harboring Double Uncommon EGFR L861Q and G719X Mutations. G. OHARA, S. OKAUCHI, Y. SASATANI, T. SHIOZAWA, H. YAMADA, K. MIYAZAKI, H. SATOH (Mito; Tsukuba; Hitachinaka; Ryugasaki, Japan)	1459
Hepatic Angiosarcoma: Clinicopathologic Study With an Investigation of ROS1 Gene Rearrangements. H. JUNG, H.-N. KIM, Y. JANG, C.-K. PARK, S.-H. SHIN, S.Y. HA (Seoul, Republic of Korea)	1463
The Impact of Intraoperative Blood Loss on the Survival of Patients With Stage II/III Pancreatic Cancer. H. TAMAGAWA, T. AOYAMA, N. YAMAMOTO, M. KAMIYA, M. MURAKAWA, Y. ATSUMI, M. NUMATA, K. KAZAMA, K. HARA, N. YUKAWA, Y. RINO, M. MASUDA, S. MORINAGA (Yokohama, Japan)	1469
Efficacy of Nivolumab Plus Ipilimumab in a Patient With Renal Cell Carcinoma Concomitant With Cardiac Metastasis: A Case Report. S. SHIROTAKE, Y. UMEZAWA, T. OKABE, G. KANEKO, K. KANAO, K. NISHIMOTO, M. OYAMA (Hidaka, Japan)	1475
Optimal Response in a Patient With CML Expressing BCR-ABL1 E6A2 Fusion Transcript With Nilotinib Therapy: A Case Report. L. MANZELLA, E. TIRRÒ, S.R. VITALE, A. PUMA, M.L.	

Comparison of HPV Testing and Colposcopy in Detecting Cervical Dysplasia in Patients With Cytological Abnormalities. J. ŚWIDERSKA-KIEC, K. CZAJKOWSKI, J. ZARĘBA-SZCZUDLIK, J. KACPERCZYK-BARTNIK, P. BARTNIK, E. ROMEJKO-WOLNIEWICZ (Warsaw, Poland)	1307
The Results of Whole-brain Radiotherapy for Elderly Patients With Brain Metastases from Urinary Bladder Cancer. D. RADES, T. NGUYEN, S.E. SCHILD (Lübeck, Germany; Scottsdale, AZ, USA)...	1317
Estimating the Lifespan of Elderly Patients With Cerebral Metastases from Kidney Cancer. D. RADES, T. NGUYEN, S.E. SCHILD (Lübeck, Germany; Scottsdale, AZ, USA)	1321
Self-expandable Metal Stent as a Bridge to Surgery for Colorectal Cancer: Safety and Oncological Outcomes. M. HANAOKA, T. OGO, Y. KAWAMURA, T. MIURA, T. ABURATANI, H. SUGIMOTO, N. HOSHINO, T. YAUCHI, Y. NISHIOKA, T. KAWANO (Soka, Japan)	1325
Biomarkers of Kidney Injury in Very-low-birth-weight Preterm Infants: Influence of Maternal and Neonatal Factors. I. CAPELLI, F. VITALI, F. ZAPPULO, S. MARTINI, C. DONADEI, M. CAPPUCCILLI, L. LEONARDI, A. GIRARDI, V. AIELLO, S. GALLETTI, G. FALDELLA, E. POLUZZI, F. DE PONTI, L.M. GAETANO (Bologna, Italy)	1333
Ovarian Seromucinous Borderline Tumors Are Histologically Different from Mucinous Borderline Tumors. T. HADA, M. MIYAMOTO, H. ISHIBASHI, H. KAWAUCHI, H. SOYAMA, H. MATSUURA, T. SAKAMOTO, S. KAKIMOTO, T. AOYAMA, H. IWAHASHI, R. SUZUKI, H. TSUDA, M. TAKANO (Tokorozawa, Japan).....	1341
Association of an Overhydrated State With the Liver Fibrosis and Prognosis of Cirrhotic Patients. K. KISHINO, H. ENOMOTO, Y. SHIMONO, E.-I. MORIWAKI, H. NISHIKAWA, T. NISHIMURA, Y. IWATA, H. IJIMA, S. NISHIGUCHI (Hyogo; Osaka, Japan).....	1347
Diagnostic Algorithm in Hirschsprung's Disease: Focus on Immunohistochemistry Markers. P. GALAZKA, L. SZYLBERG, M. BODNAR, J. STYCZYNSKI, A. MARSZALEK (Bydgoszcz; Poznan, Poland)	1355
A Simple Implement for Assessing the Survival of Elderly Patients With Melanoma Irradiated for Cerebral Metastases. T. NGUYEN, S. JANSSEN, S.E. SCHILD, D. RADES (Lübeck; Hannover, Germany; Scottsdale, AZ, USA)	1361
Relationship Between FDG Uptake and the Platelet/lymphocyte Ratio in Patients With Breast Invasive Ductal Cancer. T. FUJII, S. TOKUDA, Y. NAKAZAWA, S. KUROZUMI, S. OBAYASHI, R. YAJIMA, K. SHIRABE (Gunma, Japan).....	1365
Evaluation of Different 'Tensioning' of Apical Suspension in Women Undergoing Surgery for Prolapse and Urinary Incontinence. S. LUDWIG, S. GÖKTEPE, P. MALLMANN, W. JÄGER (Cologne, Germany).....	1371
Bevacizumab as First-line Treatment for HER2-negative Advanced Breast Cancer: Paclitaxel Plus Bevacizumab Versus Other Chemotherapy. S. NAKAMOTO, J. WATANABE, S. OHTANI, S. MORITA, M. IKEDA (Shizuoka; Hiroshima; Kyoto; Fukuyama, Japan)	1377
Expression and Prognostic Significance of CDK8 and β -Catenin in Hepatocellular Carcinoma. S.I. HAN, S.-C. LIM (Gwangju, Republic of Korea)	1387
Hearing Results Following Type 1 Tympanoplasty in Elderly Patients. T.-H. EOM, H.-R. LIM, S.-H. JEONG, K.-S. PARK, C.H. JANG (Gwangju, Republic of Korea)	1395
Characteristics and Clinical Outcomes of Non-small Cell Lung Cancer Patients in Korea With MET Exon 14 Skipping. J.Y. HUR, B.M. KU, J.H. SHIM, H.A. JUNG, J.-M. SUN, S.-H. LEE, J.S. AHN, K. PARK, M.-J. AHN (Seoul, Republic of Korea)	1399

First Reported Use of Radiofrequency Identification (RFID) Technique for Targeted Excision of Suspicious Axillary Lymph Nodes in Early Stage Breast Cancer – Evaluation of Feasibility and Review of Current Recommendations. W. MALTER, C. EICHLER, B. HANSTEIN, P. MALLMANN, J. HOLTSCHMIDT (<i>Cologne, Germany</i>).....	1207
Minimally Invasive Surgery for Congenital Abdominal Cystic Lesions in Newborns and Infants. P. GAŁAŻKA, K. REDLOCH, K. KROCZEK, J. STYCZYŃSKI (<i>Bydgoszcz, Poland</i>).....	1215
Treatment Intensification for Locally Advanced Rectal Cancer: Impact on Pathological Complete Response and Outcomes. M. DI TOMMASO, C. ROSA, L. CARAVATTA, A. AUGURIO, V. BORZILLO, S. DI SANTO, F. PERROTTI, M. TARABORRELLI, R. CIANCI, P. INNOCENTI, P. DI SEBASTIANO, A. COLASANTE, D. ANGELUCCI, M. BASTI, G. SINDICI, L. MAZZOLA, G. PIZZICANNELLA, N. DI BARTOLOMEO, M. MARCHIONI, M. DI NICOLA, D. GENOVESI (<i>Chieti; Naples; Città S. Angelo; Pescara; Lanciano, Italy</i>)....	1223
Preauricular Swelling Mimicking a Tumour: Dissolution of Mandibular Capitulum Following Trauma in a 15-Year Old Child. R.E. FRIEDRICH, F.K. KOHLRUSCH (<i>Hamburg, Germany</i>).....	1235
Prognostic Impact of Lymph Node Ratio in Patients Undergoing Preoperative Chemoradiotherapy Followed by Curative Resection for Locally Advanced Rectal Cancer. W. JUNG, K. KIM, J. KIM, S.J. SHIM (<i>Seoul, Republic of Korea</i>).....	1247
Predictive Ability of Preoperative PT-INR and Postoperative MCP1 for Post-hepatectomy Liver Failure. S. ARISAKA, R. MATSUYAMA, K. GOTO, Y. SUWA, R. MORI, D. MORIOKA, M. TAGURI, I. ENDO (<i>Yokohama, Japan</i>).....	1255
Prognostic Significance of Treatment Strategies for the Recurrent Hepatocellular Carcinomas After Radical Resection. R. SAITO, H. AMEMIYA, N. HOSOMURA, H. KAWAIDA, S. MARUYAMA, H. SHIMIZU, S. FURUYA, H. AKAIKE, Y. KAWAGUCHI, M. SUDO, S. INOUE, H. KONO, D. ICHIKAWA (<i>Yamanashi, Japan</i>).....	1265
Peritumoral Cleaving and Expression of MMP-2 and MMP-9 in Basal Cell Carcinoma of the Skin. I. MANOLA, A. MATAIC, D.L. DRVAR, I. PEZELJ, T.R. DZOMBETA, B. KRUSLIN (<i>Zagreb, Croatia</i>).....	1271
Neoadjuvant Chemotherapy for Patients With Diaphragmatic Lesions: A Prognostic Postoperative Analysis. M. SAITO, S. ODAJIMA, M. EZAWA, Y. IIDA, K. UEDA, N. YANAIHARA, H. TANABE, H. TAKANO, K. YAMADA, A. OKAMOTO (<i>Tokyo, Japan</i>).....	1277
Salvage Re-irradiation Options in Adult Medulloblastoma: A Case Report and Review of the Literature. F. CUCCIA, G. MORTELLARO, L. OGNIBENE, G. CRAPARO, A. LO CASTO, G. FERRERA (<i>Palermo; Verona, Italy</i>).....	1283
Dose-volume Histogram-based Predictors for Hematuria and Rectal Hemorrhage in Patients Receiving Radiotherapy After Radical Prostatectomy. K. SHIRAI, M. SUZUKI, K. AKAHANE, Y. TAKAHASHI, M. KAWAHARA, E. YAMADA, M. WAKATSUKI, K. OGAWA, S. TAKAHASHI, K. MINATO, K. HAMAMOTO, K. SAITO, M. OSHIMA, T. KONISHI, Y. NAKAMURA, S. WASHINO, T. MIYAGAWA (<i>Saitama; Saku; Shimotsuke, Japan</i>).....	1289
BIT-ART: Multicentric Comparison of HDR-brachytherapy, Intensity-modulated Radiotherapy and Tomotherapy for Advanced Radiotherapy in Prostate Cancer. A.R. ALITTO, L. TAGLIAFERRI, V. LANCELLOTTA, A. D'AVIERO, A. PIRAS, V. FRASCINO, F. CATUCCI, B. FIONDA, C. STAACKMANN, S. SALDI, V. VALENTINI, G. KOVACS, C. ARISTEI, G. MANTINI (<i>Rome; Perugia, Italy; Lübeck, Germany</i>).....	1297

Effect of Bone Powder/Mesenchymal Stem Cell/BMP2/Fibrin Glue on Osteogenesis in a Mastoid Obliteration Model. C.H. JANG, G.W. CHO, A.-J. SONG (<i>Gwangju, Republic of Korea</i>).....	1103
Association of Interleukin-4 Polymorphisms With Breast Cancer in Taiwan. C.-N. CHU, Y.-C. WANG, W.-S. CHANG, Z.-H. WANG, L.-C. LIU, S.-C. WANG, C.-C. LIN, T.-Y. LIU, J.-G. CHANG, C.-W. TSAI, C.-C. YU, D.-T. BAU (<i>Taichung, Taiwan, ROC</i>)	1111
Significant Association of Interleukin-16 Genetic Variations to Taiwanese Lung Cancer. M.-F. WU, Y.-C. WANG, T.-C. SHEN, W.-S. CHANG, H.-T. LI, C.-H. LIAO, C.-L. GONG, Z.-H. WANG, C.-W. TSAI, T.-C. HSIA, D.-T. BAU (<i>Taichung; Taoyuan, Taiwan, ROC</i>).....	1117
Does Age Matter? Estimating Risks of Locoregional Recurrence After Breast-conservative Surgery. G. VANNI, M. MATERAZZO, M. PELLICCIARO, L. MORANDO, I. PORTARENA, L. ANEMONA, M.R. D'ANGELILLO, R. BARBARINO, A. CHIARAVALLOTI, R. MEUCCI, T. PERRETTA, C. DEIANA, P. ORSARIA, J. CASPI, C.A. PISTOLESE, O.C. BUONOMO (<i>Rome; Pozzilli, Italy</i>).....	1125
Changes in Tracheal Respiratory Mucosa After Thyroidectomy: A Rat Model. Y.-S. LIM, Y.J. CHOI, B.H. KIM, H.-B. KIM, C.G. CHO, S.-W. PARK, J.H. PARK (<i>Goyang, Republic of Korea</i>).....	1133
Sunitinib Treatment-elicited Distinct Tumor Microenvironment Dramatically Compensated the Reduction of Myeloid-derived Suppressor Cells. S.-Y. FU, C.-C. WANG, F.-H. CHEN, C.-F. YU, J.-H. HONG, C.-S. CHIANG (<i>Hsinchu; Taoyuan, Taiwan, ROC</i>)	1141
<i>Clinical Studies</i>	
Reduction of Patella-baja and Pseudo-patella-baja Does Not Improve Range of Motion in Patients After Mega-TKA. T. GRAULICH, C. KRANZ, D. ZHANG, M. OERTEL, T.O. PACHA, M. HAERTLE, M. OMAR, C. KRETTEK, M. PANZICA (<i>Hannover, Germany; Boston, MA, USA</i>)	1153
A German Study Comparing Standard Wire Localization With Magnetic Seed Localization of Non-palpable Breast Lesions. F. KÜHN, C.E.E. SIMON, I. ALIYEVA, J. KUBMAUL, J. GROß, O. SCHWEIZERHOF, J.-U. BLOHMER, M.M. KARSTEN (<i>Berlin; Munich, Germany</i>)	1159
Arm Skeletal Muscle Mass Is Associated With the Prognosis of Patients With Cirrhosis. Y. SHIMONO, H. ENOMOTO, K. KISHINO, E.-I. MORIWAKI, H. NISHIKAWA, T. NISHIMURA, Y. IWATA, H. IJIMA, S. NISHIGUCHI (<i>Hyogo; Osaka, Japan</i>).....	1165
Oral Azelaic Acid Ester Decreases Markers of Insulin Resistance in Overweight Human Male Subjects. R.T. STREPPER, C. LOUDEN, E. IZBICKA (<i>San Antonio; Bandera, TX, USA</i>).....	1173
A Novel Noninvasive Method for Predicting Liver Fibrosis by Quantifying the Estrangement of Indocyanine Green Retention Rate and Tc-99m-diethylenetriamine-penta-acetic Acid-galactosyl Human Serum Albumin Scintigraphy. T. HANAKI, E. UCHINAKA, T. YAGYU, M. MORIMOTO, J. WATANABE, K. MIYATANI, K. KIHARA, T. MATSUNAGA, M. YAMAMOTO, Y. FUKUMOTO, N. TOKUYASU, S. TAKANO, T. SAKAMOTO, S. HONJO, T. HASEGAWA, Y. FUJIWARA (<i>Yonago, Japan</i>).....	1187
Influence of Preeclampsia on Induction of Labor at Term: A Cohort Study. J. PRETSCHER, C. WEISS, U. DAMMER, F. STUMPFE, F. FASCHINGBAUER, M.W. BECKMANN, S. KEHL (<i>Erlangen; Heidelberg, Germany</i>)	1195
Significance of Primary Malignant Tumors on the Outcome of Patients With Resected Gastrointestinal Stromal Tumors. S. KOHNO, H. AOKI, M. OGAWA, K. YOSHIDA, K. YANAGA (<i>Tokyo, Japan</i>).....	1201

Augmentation of Neurotoxicity of Anticancer Drugs by X-Ray Irradiation. G. NAKAYA, H. SAKAGAMI, Y. KOGA-OGAWA, A. SHIROTO, T. NOBESAWA, D. UEDA, S. NAKATANI, K. KOBATA, Y. IJIMA, S. TONE, A. DAVID-GONZALEZ, R. GARCIA-CONTRERAS, M. TOMOMURA, S. KITO, N. TAMURA, H. TAKESHIMA (<i>Saitama, Japan; Mexico City, Mexico</i>).....	1009
Expression of Periostin in Cancer-associated Fibroblasts in Mammary Cancer in Female Dogs. P. BORECKA, K. RATAJCZAK-WIELGOMAS, R. CIAPUTA, M. KANDEFER-GOLA, I. JANUS, A. PIOTROWSKA, A. KMIĘCIK, M. PODHORSKA-OKOLÓW, P. DZIĘGIEL, M. NOWAK (<i>Wrocław, Poland</i>)	1017
Comparison of the Efficacy of EGFR Tyrosine Kinase Inhibitors Erlotinib and Low-dose Osimertinib on a PC-9-GFP EGFR Mutant Non-small-cell Lung Cancer Growing in the Brain of Nude Mice. Y. KATSUYA, K. MIYAKE, T. HIGUCHI, H. OSHIRO, N. SUGISAWA, S.R. SINGH, Y. GOTO, M. ZHAO, R.M. HOFFMAN (<i>San Diego, CA; Frederick, MD, USA; Tokyo, Japan</i>)	1027
Propranolol Specifically Suppresses the Viability of Tumorous Schwann Cells Derived from Plexiform Neurofibromas <i>In Vitro</i> . Z. ZOU, L. GUO, V. MAUTNER, R. SMEETS, L. KIUWE, R.E. FRIEDRICH (<i>Hamburg, Germany</i>)	1031
Prophylactic Effect of Recombinant Human Soluble Thrombomodulin for Hepatic Sinusoidal Obstruction Syndrome Model Mice. S. KANOU, T. MIYASHITA, Y. YAMAMOTO, S. TAKADA, M. NAKURA, M. OKAZAKI, Y. OHBATAKE, S. NAKANUMA, I. MAKINO, H. TAJIMA, H. TAKAMURA, S. FUSHIDA, T. OHTA (<i>Kanazawa, Japan</i>).....	1037
Association of Murine Double Minute 2 Genotypes and Lung Cancer Risk. Y.-C. LIN, W.-S. CHANG, T.-C. SHEN, H.-T. LI, C.-H. LI, Y.-C. HSIAU, Y.-C. WANG, C.-N. WU, C.-L. GONG, Z.-H. WANG, C.-W. TSAI, T.-C. HSIA, D.-T. BAU (<i>Taichung, Taiwan, ROC</i>).....	1047
Hydroxyapatite Nanoparticles as Injectable Bone Substitute Material in a Vertical Bone Augmentation Model. A. KANEKO, E. MARUKAWA, H. HARADA (<i>Tokyo, Japan</i>).....	1053
Student Views on a Novel Holistic Surgical Education Curriculum (iG4): A Multi-national Survey in a Changing Landscape. M. SIDERIS, M. NICOLAIDES, I. THEODOULOU, E.I. EMIN, J.G. HANRAHAN, A. DEDEILIA, E. THEODOROU, G. PAPAROIDAMIS, Z. ABDULLAH, C. PAPOUTSOS, T. PITTARAS, F. ODEJINMI, A. PAPALOIS (<i>London; Cambridge, UK; Athens; Thessaloniki, Greece; Nicosia, Cyprus</i>)	1063
Effect of Small-molecule GSK3 Antagonist on Differentiation of Rat Dental Pulp Cells into Odontoblasts. Y. MASUDA, H. SAKAGAMI, S. YOKOSE, N. UDAGAWA (<i>Nagano; Saitama, Japan</i>)	1071
Wogonin Influences Osteosarcoma Stem Cell Stemness Through ROS-dependent Signaling. H. KOH, H.-N. SUN, Z. XING, R. LIU, N. CHANDIMALI, T. KWON, D.-S. LEE (<i>Jeju; Jeonbuk, Republic of Korea; Daqing, PR China</i>).....	1077
BRM270 Suppresses Cervical Cancer Stem Cell Characteristics and Progression by Inhibiting SOX2. N. CHANDIMALI, H.-N. SUN, Y.H. PARK, T. KWON (<i>Daejeon; Seoul; Jeonbuk, Republic of Korea; Daqing, PR China</i>)	1085
Dose-volume Histogram Analysis of Knowledge-based Volumetric-modulated Arc Therapy Planning in Postoperative Breast Cancer Irradiation. E. INOUE, H. DOI, H. MONZEN, M. TAMURA, M. INADA, K. ISHIKAWA, K. NAKAMATSU, Y. NISHIMURA (<i>Osaka, Japan</i>)	1095