

ANTICANCER RESEARCH

International Journal of Cancer Research and Treatment

ISSN: 0250-7005

Volume 40, Number 1, January 2020

Contents

Review

Current Treatment of Colorectal Liver Metastasis as a Chronic Disease. N.M. DORR, M. BARTELS, M.H. MORGUL (*Leipzig; Münster, Germany*) 1

Experimental Studies

SAHA and EGCG Promote Apoptosis in Triple-negative Breast Cancer Cells, Possibly Through the Modulation of cIAP2. K.L. STEED, H.R. JORDAN, T.O. TOLLEFSBOL (*Birmingham, AL, USA*) 9

Genetic Polymorphisms in IL-10 Promoter Are Associated With Smoking and Prostate Cancer Risk in African Americans. M. ABBAS, T. MASSON, A. BRAD, M. KIBRAWJESHI, V. APPREY, Y. KANAAN, B. WILSON, G. DUNSTON, L. RICKS-SANTI, H. BRIM (*Washington, DC; Silver Spring, MD; Hanapee, VA, USA*) 27

High Expression of c-Met, PKC λ and ALDH1A3 Predicts a Poor Prognosis in Late-stage Breast Cancer. H. MOTOMURA, Y. NOZAKI, C. ONAGA, A. OZAKI, S. TAMORI, T.-A. SHIINA, S. KANAI, C. OHIRA, Y. HARA, Y. HARADA, R. TAKASAWA, T. HANAWA, S.-I. TANUMA, Y. MANO, T. SATO, K. SATO, K. AKIMOTO (*Chiba, Japan*) 35

Targeting Fibroblast Growth Factor Receptor (FGFR) and Phosphoinositide 3-kinase (PI3K) Signaling Pathways in Medulloblastoma Cell Lines. S. HOLZHAUSER, M. LUKOSEVICIUTE, T. ANDONOVA, R.G. URSU, T. DALIANIS, M. WICKSTRÖM, O.N. KOSTOPOULOU (*Stockholm; Sueden; Iasi, Romania*) 53

Cisplatin Induced the Expression of SEI1 (TRIP-Br1) Oncogene in Human Oral Squamous Cancer Cell Lines. J.LI, Z. VANGUNDY, M. POI (*Columbus, OH, USA*) 67

Contents continued on the back cover

ISSN (online): 1791-7530 / ISSN (print): 0250-7005

General Policy

- **ANTICANCER RESEARCH** is an independent international forum devoted to the rapid publication of original high quality articles and reviews on all aspects of experimental and clinical oncology. Prompt evaluation of all submitted articles in confidence and rapid publication within 1-2 months from acceptance are guaranteed.
- **ANTICANCER RESEARCH** is published monthly by the International Institute of Anticancer Research and is available online with Stanford University HighWire Press.
- **Editorial Office:** International Institute of Anticancer Research, 1st km Kapandritiou-Kalamou Rd., P.O. Box 22, Kapandriti, Attiki 19014, Greece. Tel: +30 22950 52945, Fax: +30 22950 53389.

U.S. Branch: Anticancer Research Inc., USA, 111 Bay Avenue, Highlands, NJ, USA.

- **E-mail:** journals@iia-anticancer.org; IIA WEBSITES: www.iia-anticancer.org and www.iiajournals.org

● Selection of Recent Articles

SAHA and EGCG Promote Apoptosis in Triple-negative Breast Cancer Cells, Possibly Through the Modulation of cIAP2. K.L. STEED, H.R. JORDAN, T.O. TOLLEFSBOL (*Birmingham, AL, USA*)

Targeting Fibroblast Growth Factor Receptor (FGFR) and Phosphoinositide 3-kinase (PI3K) Signaling Pathways in Medulloblastoma Cell Lines. S. HOLZHAUSER, M. LUKOSEVICIUTE, T. ANDONOVA, R.G. URSU, T. DALIANIS, M. WICKSTRÖM, O.N. KOSTOPOULOU (*Stockholm, Sweden; Iasi, Romania*)

Quantitative Structure–Cytotoxicity Relationship of 2-Arylazolychromones and 2-Triazolylchromones. J. NAGAI, H. SHI, N. SEZAKI, N. YOSHIDA, K. BANDOW, Y. UESAWA, H. SAKAGAMI, M. TOMOMURA, A. TOMOMURA, K. TAKAO, Y. SUGITA (*Tokyo; Sakado; Urayasu, Japan; Shanghai, PR China*)

High Expression of c-Met, PKC λ and ALDH1A3 Predicts a Poor Prognosis in Late-stage Breast Cancer. H. MOTOMURA, Y. NOZAKI, C. ONAGA, A. OZAKI, S. TAMORI, T.-A. SHIINA, S. KANAI, C. OHIRA, Y. HARA, Y. HARADA, R. TAKASAWA, T. HANAWA, S.-I. TANUMA, Y. MANO, T. SATO, K. SATO, K. AKIMOTO (*Chiba, Japan*)

Chronic Expanding Hematoma with a t(11;19)(q13;q13) Chromosomal Translocation. I. PANAGOPOULOS, L. GORUNOVA, I. KOSTOLOMOV, I. LOBMAIER, B. BJERKEHAGEN, S. HEIM (*Oslo, Norway*)

PGC-1 α Regulates Cell Proliferation and Invasion via AKT/GSK-3 β /catenin Pathway in Human Colorectal Cancer SW620 and SW480 cells. S.-H. YUN, J.-I. PARK (*Busan, Republic of Korea*)

Symptomatic Mandibular Fibrous Dysplasia With Concurrent Triple X- and Premutation Stage Fragile-X-Syndrome: Case Report With Short Literature Survey. R.E. FRIEDRICH, F.K. KOHLRUSCH, A.M. LUEBKE (*Hamburg, Germany*)

Cisplatin Induced the Expression of SEI1 (TRIP-Br1) Oncogene in Human Oral Squamous Cancer Cell Lines. J. LI, Z. VANGUNDY, M. POI (*Columbus, OH, USA*)

High Rate of Detection of Human ESPL1–HBV S Fusion Gene in Patients With HBV-related Liver Cancer: A Chinese Case–Control Study. B. HU, W. HUANG, R. WANG, W. ZANG, M. SU, H. LI, H. WANG, B. CAO, D. DENG, Q.Q. LI, J. JIANG (*Nanning; Hefei, PR China; Bethesda, MD, USA*)

Brief Pain Inventory (BPI) Health Survey After Midline Laparotomy With the Rectus Sheath Block (RSB) Analgesia: A Randomised Trial of Patients With Cancer and Benign Disease. V. KUOSMANEN, M. RUOTTINEN, D. RAHKOLA, I. SAIMANEN, V. KAARONEN, T. SELANDER, M. PURDY, H. KOKKI, M. KOKKI, M. ESKELINEN (*Kuopio, Finland*)

Current Treatment of Colorectal Liver Metastasis as a Chronic Disease. N.M. DORR, M. BARTELS, M.H. MORGUL (*Leipzig; Münster, Germany*)

Review of Recent Advances in Understanding the Role of Vitamin D Role in Reducing Cancer Risk: Breast, Colorectal, Prostate, and Overall Cancer. W.B. GRANT (*San Francisco, CA, USA*)

Chemoprevention of Prostate Cancer by Natural Agents: Evidence from Molecular and Epidemiological Studies. K. MOKBEL, U. WAZIR, K. MOKBEL (*London, UK*)

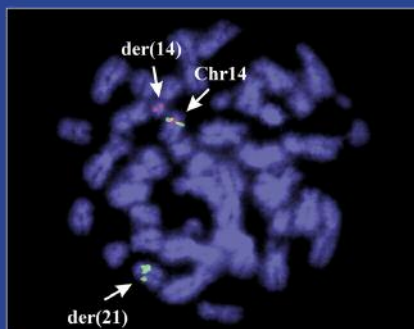
Adherence to Adjuvant Aromatase Inhibitor Therapy Among Postmenopausal Hispanic/Latino Women With Breast Cancer. A. PHILIPOVSKIY, A. CAMPBELL, R. HEYDARIAN, B. CASTILLO, A.K. DWIVEDI, R. MCCALLUM, R. AGUILERA, S. GAUR, N. ZEINA (*El Paso, TX; Weston, FL, USA*)

Treatment Algorithm for Patients With Gastric Adenocarcinoma: An Austrian Consensus on Systemic Therapy. E. WÖLL, W. EISTERER, A. GERGER, T. KÜHR, G.W. PRAGER, H. RUMPOLD, H. ULRICH-PUR, U. VOGL, T. WINDER, L. WEISS, R. GREIL (*Zams; Klagenfurt; Graz; Wels; Vienna; Feldkirch; Salzburg, Austria*)

CANCER GENOMICS & PROTEOMICS

Volume 17, Number 1, January-February 2020

ISSN (online): 1790-6245



Published by the International Institute of Anticancer Research

Online ISSN: 1790-6245

General Policy

- **CANCER GENOMICS & PROTEOMICS (CGP)** welcomes submissions of original high quality articles and reviews on all aspects of the application of genomic and proteomic technologies to experimental and clinical cancer research. The journal's scientific spectrum includes: (a) molecular causes of carcinogenesis, cancer progression and metastasis; (b) structural and functional aspects of genes in the cancer cell; (c) advances in genomic and proteomic technologies applicable to cancer research; (d) anticancer drug design and drug development. A main aim of CGP is to ensure the prompt and confidential review, and rapid publication of original works and reviews, generally within 1-3 months from submission.
- CGP is published bimonthly by the **International Institute of Anticancer Research (IIAR)** and is available online only and open access with **Stanford University HighWire Press**. For more information please visit our website www.cgp.iiarjournals.org.
- **Editorial Office:** International Institute of Anticancer Research, 1st km Kapandritiou-Kalamou Rd., P.O. Box 22, Kapandriti, Attiki 19014, Greece. Tel: +30 22950 52945, Fax: +30 22950 53389.
U.S. Branch: Anticancer Research Inc., USA, 111 Bay Avenue, Highlands, NJ, USA.
- **E-mail:** journals@iiar-anticancer.org; IIAR WEBSITES: www.iiar-anticancer.org and www.iiarjournals.org

● Selection of Recent Articles

Duplex DNA from Sites of Helicase-Polymerase Uncoupling Links Non-B DNA Structure Formation to Replicative Stress. C. AMPARO, J. CLARK, V. BEDELL, J.L. MURATA-COLLINS, M. MARTELLA, F. PICHIORRI, E.F. WARNER, M. ABDELHAMID, Z.A.E. WALLER, S.S. SMITH (*Duarte, CA, USA; Norwich, UK*)

Pazopanib Inhibits Tumor Growth, Lymph-node Metastasis and Lymphangiogenesis of an Orthotopic Mouse of Colorectal Cancer. G. ZHU, M. ZHAO, Q. HAN, Y. TAN, Y. SUN, M. BOUVET, S.R. SINGH, J. YE, R.M. HOFFMAN (*San Diego, CA; Frederick, MD, USA; Fuzhou, PR China*)

KIF15 Expression in Tumor-associated Monocytes Is a Prognostic Biomarker in Hepatocellular Carcinoma. A. KITAGAWA, T. MASUDA, J. TAKAHASHI, T. TOBO, M. NODA, Y. KURODA, Q. HU, Y. KOUYAMA, Y. KOBAYASHI, S. KURAMITSU, K. SATO, A. FUJII, Y. YOSHIKAWA, H. WAKIYAMA, D. SHIMIZU, Y. TSURUDA, H. EGUCHI, Y. DOKI, M. MORI, K. MIMORI (*Oita; Osaka; Fukuoka, Japan*)

Chromosome Translocation t(14;21)(q11;q22) Activates Both OLIG1 and OLIG2 in Pediatric T-cell Lymphoblastic Malignancies and May Signify Adverse Prognosis. I. PANAGOPOULOS, L. GORUNOVA, I.M. RINVOLL JOHANNSDOTTIR, K. ANDERSEN, A. HOLTH, K. BEISKE, S. HEIM (*Oslo, Norway*)

Whole Transcriptomic Analysis of Apigenin-mediated Influence on TNF α Immuno-activated MDA-MB-231 Breast Cancer Cells. D. BAUER, E. MAZZIO, K.F.A. SOLIMAN (*Tallahassee, FL, USA*)

Significant Association Between the MiR146a Genotypes and Susceptibility to Childhood Acute Lymphoblastic Leukemia in Taiwan. J.-S. PEI, W.-S. CHANG, P.-C. HSU, C.-C. CHEN, Y.-T. CHIN, T.-L. HUANG, Y.-N. HSU, C.-C. KUO, Y.-C. WANG, C.-W. TSAI, C.-L. GONG, D.-T. BAU (*Taoyuan; Taichung, Taiwan, ROC*)

Clonal Relationship Between Lichen Sclerosus, Differentiated Vulvar Intraepithelial Neoplasia and Non HPV-related Vulvar Squamous Cell Carcinoma. A.-F.W. POUWER, L.C.G. VAN DEN EINDEN, M. VAN DER LINDEN, J.Y. HEHIR-KWA, J. YU, K.M. HENDRIKS, E.J. KAMPING, A. EIJKELENBOOM, L.F.A.G. MASSUGER, J. BULTEN, A.A.G. VAN TILBORG, J.A. DE HULLU, R.P. KUIPER (*Nijmegen; Utrecht, the Netherlands*)

Identification of Novel Prognosis and Prediction Markers in Advanced Prostate Cancer Tissues Based on Quantitative Proteomics. O.K. KWON, Y.-S. HA, A.Y. NA, S.Y. CHUN, T.G. KWON, J.N. LEE, S. LEE (*Daegu, Republic of Korea*)

BRD4-Regulated Molecular Targets in Mantle Cell Lymphoma: Insights into Targeted Therapeutic Approach. T. TSUKAMOTO, S. NAKAHATA, R. SATO, A. KANAI, M. NAKANO, Y. CHINEN, S. MAEGAWA-MATSUI, Y. MATSUMURA-KIMOTO, T. TAKIMOTO-SHIMOMURA, Y. MIZUNO, S. KUWAHARA-OTA, Y. KAWAJI, M. TANIWAKI, T. INABA, K. TASHIRO, K. MORISHITA, J. KURODA (*Kyoto; Miyazaki; Hiroshima, Japan*)

MicroRNAs Involved in Metastasis of Hepatocellular Carcinoma: Target Candidates, Functionality and Efficacy in Animal Models and Prognostic Relevance. U.H. WEIDLE, D. SCHMID, F. BIRZELE, U. BRINKMANN (*Penzberg, Germany; Basel, Switzerland*)

Increased Expression of Gremlin1 Promotes Proliferation and Epithelial Mesenchymal Transition in Gastric Cancer Cells and Correlates With Poor Prognosis of Patients With Gastric Cancer. Z. SUN, S. CAI, C. LIU, Y. CUI, J. JI, W.G. JIANG, L. YE (*Cardiff, UK; Beijing, PR China*)

Recurrence of Atrial Fibrillation in Dependence of Left Atrial Volume Index. M. KRANERT, T. SHCHETYNSKA-MARINOVA, V. LIEBE, C. DOESCH, T. PAPAVALASSILIU, I. AKIN, M. BORGGREFE, A. HOHNECK (<i>Mannheim, Germany</i>)	889
Phase II Study of Consolidation Amrubicin After Concurrent Chemoradiotherapy in Patients With Limited-stage Small-cell Lung Cancer. H. YOSHIDA, H. NAGAI, Y. SAKAMORI, H. OZASA, T. NISHIMURA, K. TOMII, T. HIRAI, Y. MATSUO, Y. IIZUKA, T. MIZOWAKI, K. YOSHIMURA, Y.H. KIM (<i>Kyoto; Kobe; Hiroshima, Japan</i>)	897
Efficacy of Irinotecan as Third-line Chemotherapy for Unresectable or Recurrent Gastric Cancer. M. FUKUCHI, K. KUWABARA, T. ISHIGURO, Y. KUMAGAI, K. ISHIBASHI, E. MOCHIKI, H. ISHIDA (<i>Kawagoe, Japan</i>)	903
Role of Magnetic Resonance Imaging in the Evaluation of Breast Cancer Response to Neoadjuvant Chemotherapy. G. PASQUERO, A. SURACE, A. PONTI, M. BORTOLINI, D. TOTA, M.P. MANO, R. ARISIO, C. BENEDETTO, M.G. BAÙ (<i>Turin, Italy</i>)	909
Eribulin Suppresses New Metastases in Patients With Metastatic Breast Cancer. T. FUJII, S. TOKUDA, Y. NAKAZAWA, S. KUROZUMI, S. OBAYASHI, R. YAJIMA, K. SHIRABE (<i>Gunma, Japan</i>)	917
The Onset of Urinary Incontinence in Different Subgroups and its Relation to Menopausal Status: A Hospital-based Study. F. THANGARAJAH, J. HARTMANN-WOBBE, D. RATIU, C. PAHMEYER, J. C. RADOSA, P. MALLMANN, S. LUDWIG (<i>Cologne; Homburg, Germany</i>)	923
Incidence of Influenza Among Childhood Cancer Survivors in South Korea: A Population-based Retrospective Analysis. J. HEO, H.J. JUNG, O.K. NOH, L. KIM, J.E. PARK (<i>Suwon; Seoul, Republic of Korea</i>)	929
Persistent Left Superior Vena Cava – Accidental Finding. C. SAVU, C. PETREANU, A. MELINTE, R. POSEA, I. BALESCU, L. ILIESCU, C. DIACONU, N. GALIE, N. BACALBASA (<i>Bucharest, Romania</i>)	935
Association of SNPs in CDKN2A (P14ARF) Tumour Suppressor Gene With Endometrial Cancer in Postmenopausal Women. W. WUJCICKA, A. ZAJAC, K. SZYLLO, B. SMOLARZ, H. ROMANOWICZ, G. STACHOWIAK (<i>Lodz, Poland</i>)	943

Persistent Descending Mesocolon as a Key Risk Factor in Laparoscopic Colorectal Cancer Surgery. L. WANG, H. KONDO, Y. HIRANO, T. ISHII, K. HARA, N. OBARA, M. ASARI, T. KATO, G. HENG, S. YAMAGUCHI (<i>Hidaka, Japan</i>).....	807
Surgical Ectrodactyly Repair Using Limb-lengthening and Bone Tissue Engineering Techniques in a Toy Dog Breed. M.-I. LEE, H.-H. KWAK, J.-H. KIM, H.-S. SHIN, H.-M. WOO, B.-J. KANG (<i>Chuncheon; Seoul, Republic of Korea</i>).....	815
Metastatic Cutaneous Squamous Cell Carcinoma in Liver Successfully Treated With Partial Hepatectomy and Adjuvant Irinotecan Chemotherapy. Y. ASAHINA, Y. NAKAMURA, K. TANESE, I. HIRAI, K. FUKUDA, M. AMAGAI, T. FUNAKOSHI (<i>Tokyo, Japan</i>).....	825
Rivaroxaban Versus Low-molecular-weight Heparin for Venous Thromboembolism in Advanced Upper Gastrointestinal Tract and Hepatopancreatobiliary Cancer. J.H. KIM, S. SEO, K.-P. KIM, H.-M. CHANG, B.-Y. RYOO, C. YOO, J.H. JEONG, J.-L. LEE, H.-S. IM, H. JEONG, Y. BANG, S.R. PARK (<i>Seoul, Republic of Korea</i>)	829
The Influence of the Preoperative Status on the Risk of Postoperative Complications After Cytoreductive Surgery for Advanced-stage Ovarian Cancer. N. BACALBASA, I. BALESCU, M. DIMITRIU, L. ILIESCU, C. DIACONU, S. DIMA, M. VILCU, I. BREZEAN (<i>Bucharest, Romania</i>).....	839
Comparison of Saccharin Time in Nursing Home Residents With and Without Pneumonia: A Preliminary Study. Y. UCHIDA, K. NOHARA, N. TANAKA, N. FUJII, H. FUKATSU, N. KANEKO, M. MITSUYAMA, T. SAKAI (<i>Suita; Okayama; Osaka, Japan</i>).....	845
Distribution of Regulatory T-Cells and Other Phenotypes of T-Cells in Tumors and Regional Lymph Nodes of Colorectal Cancer Patients. K. KAZAMA, T. AOYAMA, J. OTAKE, M. SHIOZAWA, N. SUGANO, S. SATO, Y. ATSUMI, K. KANO, M. MURAKAWA, Y. MAEZAWA, I. HASHIMOTO, M. NUMATA, H. TAMAGAWA, T. OSHIMA, N. YUKAWA, Y. RINO, M. MASUDA, T. SASADA (<i>Yokohama, Japan</i>).....	849
Risk Factors for Postoperative Anastomosis Leak After Esophagectomy for Esophageal Cancer. T. AOYAMA, Y. ATSUMI, K. HARA, H. TAMAGAWA, A. TAMAGAWA, K. KOMORI, I. HASHIMOTO, Y. MAEZAWA, K. KAZAMA, K. KANO, M. MURAKAWA, M. NUMATA, T. OSHIMA, N. YUKAWA, M. MASUDA, Y. RINO (<i>Yokohama, Japan</i>).....	857
The Role of Neutrophil-to-lymphocyte Ratio on the Effect of CRT for Patients With Rectal Cancer. D. ISHIKAWA, M. NISHI, C. TAKASU, H. KASHIHARA, T. TOKUNAGA, J. HIGASHIJIMA, K. YOSHIKAWA, M. SHIMADA (<i>Tokushima, Japan</i>)	863
CO ₂ Laser De-epithelization Technique for Subepithelial Connective Tissue Graft: A Study of 21 Recessions. H. YOSHINO, A. HASUIKE, N. SANJO, D. SATO, T. KUBOTA, H. NAGASHIMA, S. SATO (<i>Kawaguchi; Tokyo, Japan</i>).....	869
Severe Thrombocytopenia Associated With Pembrolizumab in Patients With Non-small Cell Lung Cancer (NSCLC): A Case Report and Literature Review. A. MOURI, K. KAIRA, A. SHIONO, Y. MIURA, H. KAGAMU (<i>Saitama, Japan</i>).....	877
Comparative Analysis of Immunoinflammatory and Nutritional Measures in Surgically Resected Esophageal Cancer: A Single-center Retrospective Study. M. SAKAI, M. SOHDA, H. SAITO, Y. ASUNARI, N. NAKAZAWA, K. KURIYAMA, K. HARA, A. SANO, K. OGATA, T. YOKOBORI, K. SHIRABE, H. SAEKI (<i>Gunma, Japan</i>)	881

Comparative Assessment of Two Strategies for Interpreting Tumor Markers in Ascitic Effusions. J. TRAPÉ, F. SANT, J. MONTESINOS, A. ARNAU, M. SALA, C. FIGOLS, J. FRANQUESA, E. ESTEVE-VALVERDE, R. PÉREZ, J. ALIGUÉ, S. CATOT, E. CASADO, M. DOMENECH, J. TRAPÉ-UBEDA, C. BERGÓS, F. VIDA, P. SORT, M. BONET, D. RUIZ, C. GONZÁLEZ-FERNÁNDEZ, J. ORDEIG, R. MOLINA (<i>Manresa; Vic; Barcelona, Spain</i>).....	715
Uselessness of Serum p53 Antibody for Detecting Colitis-associated Cancer in the Era of Immunosuppressive Therapy. K. TORITANI, H. KIMURA, R. KUNISAKI, J. WATANABE, C. KUNISAKI, A. ISHIBE, S. CHIBA, Y. INAYAMA, I. ENDO (<i>Yokohama, Japan</i>).....	723
Axillary Nodal Burden in Breast Cancer Patients With Pre-operative Fine Needle Aspiration-proven Positive Lymph Nodes Compared to Those With Positive Sentinel Nodes. C. CIPOLLA, M.R. VALERIO, N. GRASSI, S. CALAMIA, S. LATTERI, M. LATTERI, G. GRACEFFA, S. VIENI (<i>Palermo, Italy</i>)	729
Symptom Burden in Patients With Reduced Performance Status at the Start of Palliative Radiotherapy. C. NIEDER, T.A. KÄMPE (<i>Bodø; Tromsø, Norway</i>)	735
Protective Effects of Cold Ringer’s Solution Perfusion in Abdominal Aortic Surgery Requiring Renal Artery Clamp. T. HIROSE, N. SAWABATA, T. ABE, Y. HAYATA, S. HIRAGA, H. NISHIKAWA, S. TANIGUCHI (<i>Kashihara, Japan</i>).....	739
Optical Coherence Tomography for <i>In Vivo</i> Identification, Characterization and Optimal Treatment of Spontaneous Recanalization of Coronary Thrombus. M. SPINU, C. HOMORODEAN, M.C. OBER, M. OLINIC, P.A. MIRCEA, D.M. OLINIC (<i>Cluj-Napoca, Romania</i>)	745
Clinical Outcomes of Dose-escalated Radiotherapy for Localised Prostate Cancer: A Single-institution Experience. K. MENG, K. LIM, C.C. LEE, D. CHIA, K.H. OOI, Y.Y. SOON, J. TEY (<i>Singapore, Singapore</i>)	757
Interval Between Cancer Diagnosis and Radiotherapy – An Independent Prognostic Factor of Survival in Patients Irradiated for Bone Metastases from Kidney Cancer. D. RADES, R. HAUS, S. JANSSEN, S.E. SCHILD (<i>Lübeck; Hannover, Germany; Scottsdale, AZ, USA</i>).....	767
Importance of Monitoring Physical Function for Quality of Life Assessments in Hematopoietic Stem Cell Transplantation Patients: A Prospective Cohort Study. I. KIM, Y. KOH, D. SHIN, J. HONG, H.J. DO, S.-H. KWON, K.S. SEO (<i>Seoul, Republic of Korea</i>)	771
Wedge Resection of Tumor Before Lobectomy for Lung Cancer Could Be a No-touch Isolation Technique. M. YASUKAWA, N. SAWABATA, T. KAWAGUCHI, S. TANIGUCHI (<i>Nara, Japan</i>)	779
Superior Mesenteric and Portal Vein Reconstruction With Cadaveric Allograft During Pancreatoduodenectomy – A Case Report and Literature Review. N. BACALBASA, I. BALESCU, M. VILCU, S. DIMA, L. ILIESCU, I. BREZEAN, V. BRASOVEANU, I. POPESCU (<i>Bucharest, Romania</i>).....	787
Urinary Tract Resections as Part of Debulking Surgery for Locally Advanced Endometrial Stromal Sarcomas. N. BACALBASA, I. BALESCU, L. ILIESCU, C. DIACONU, S. DIMA, M. VILCU, I. BREZEAN (<i>Bucharest, Romania</i>)	793
Survival Analysis of Pathological T3a Upstaging in Clinical T1 Renal Cell Carcinoma. G.-S. LAI, J.-R. LI, S.-S. WANG, C.-S. CHEN, C.-K. YANG, S.-C. HUNG, C.-L. CHENG, Y.-C. OU, K.-Y. CHIU (<i>Chiayi; Taichung; Nantou, Taiwan, ROC</i>).....	799

Astragaloside IV Induces Apoptosis, G1-Phase Arrest and Inhibits Anti-apoptotic Signaling in Hepatocellular Carcinoma. C.-M. SU, H.-C. WANG, F.-T. HSU, C.-H. LU, C.-K. LAI, J.-G. CHUNG, Y.-C. KUO (<i>Changhua; Taipei; New Taipei City; Taichung; Kaohsiung, Taiwan, ROC</i>)	631
PD-L1 Expression and Tumor-infiltrating Lymphocytes in Breast Cancer: Clinicopathological Analysis in Women Younger than 40 Years Old. Z. EVANGELOU, A. PAPOUDOU-BAI, G. KARPATHIU, H. KOUREA, S. KAMINA, A. GOUSSIA, H. HARISSIS, D. PESCHOS, A. BATISTATOU (<i>Ioannina; Patras, Greece; Saint-Etienne, France</i>)	639
Immunoreactivity of MAPK Signaling in a Rat Model of Intrauterine Growth Retardation Induced by Uterine Artery Ligation. M.S. CHOI, Y.Y. CHUNG, D.-J. KIM, S.T. KIM, Y.H. JUN (<i>Gwang-ju, Republic of Korea</i>).....	649
The Effect of TISSEEL® on Colorectal Anastomosis Healing Process in a Diabetic Animal Experimental Model. K. STERGIOS, M. FROUNTZAS, V. PERGIALIOTIS, L.M. KOROU, K. KONTZOGLU, K. STEFANIDIS, N. NIKITEAS, D.N. PERREA, G. VAOS (<i>Athens, Greece</i>)	659
<i>Clinical Studies</i>	
Health-related Quality of Life of Breast Cancer Survivors Attending an Exercise Intervention Study: A Five-year Follow-up. E. ROINE, H. SINTONEN, P.-L. KELLOKUMPU-LEHTINEN, H. PENTTINEN, M. UTRAIINEN, L. VEHMANEN, R. HUOVINEN, H. KAUTIAINEN, R. NIKANDER, C. BLOMQUIST, T. SAARTO (<i>Helsinki; Tampere; Turku; Kuopio; Jyväskylä, Finland</i>).....	667
Management of Patients With Metastatic Renal Cell Cancer and Bone Metastases. C. NIEDER, A. DALHAUG, A.R. PAWINSKI (<i>Bodø; Tromsø, Norway</i>).....	675
Eastern Cooperative Oncology Group Performance Score Is Associated With Survival After Radiotherapy of Bone Metastases from Prostate Cancer. R. HAUS, S. JANSSEN, S.E. SCHILD, D. RADES (<i>Lübeck; Hannover, Germany; Scottsdale, AZ, USA</i>).....	679
Chemoembolization Alone or Associated With Bevacizumab for Therapy of Colorectal Cancer Metastases: Preliminary Results of a Randomized Study. G. FIORENTINI, D. SARTI, M. NARDELLA, R. INCHINGOLO, M. NESTOLA, A. REBONATO, S. GUADAGNI (<i>Pesaro; Matera; L'Aquila, Italy</i>).....	683
The Anthropometric Assessment With the Bioimpedance Method Is Associated With the Prognosis of Cirrhotic Patients. E.-I. MORIWAKI, H. ENOMOTO, M. SAITO, N. HARA, H. NISHIKAWA, T. NISHIMURA, Y. IWATA, H. IJIMA, S. NISHIGUCHI (<i>Hyogo; Osaka, Japan</i>)	687
Surgical Intervention for Uterine Fibroids. Our 4-Year Experience and Literature Review: Is It Time to Centralise Care Provision Via Specialist Fibroid Centres? S.M. STRONG, M. SIDERIS, Z. MAGAMA, S. ROUABHI, F. ODEJINMI (<i>London, UK</i>)	695
Differences in Risk Factors for Melanoma in Young and Middle-aged Higher-risk Patients. J.S. PALVE, N.J. KORHONEN, T.H. LUUKKAALA, M.T. KÄÄRIÄINEN (<i>Tampere, Finland</i>).....	703
Sequential Analysis of Neutrophil-to-lymphocyte Ratio for Differentiated Thyroid Cancer Patients Treated With Lenvatinib. N. FUKUDA, X. WANG, A. OHMOTO, T. URASAKI, Y. SATO, K. NAKANO, M. NISHIZAWA, M. YUNOKAWA, M. ONO, J. TOMOMATSU, S. TAKAHASHI (<i>Tokyo, Japan</i>).....	709

Microdialysis for the Assessment of Intervertebral Disc and Vertebral Cancellous Bone Metabolism in a Large Porcine Model. M. BUE, P. HANBERG, M.B. THOMASSEN, M. TØTTRUP, T.M. THILLEMANN, K. SØBALLE, H. BIRKE-SØRENSEN (<i>Horsens; Aarhus; Farsø, Denmark</i>)	527
Is Ovarian Tissue Transport at Supra-zero Temperatures Compared to Body Temperature Optimal for Follicle Survival? N. RAFFEL, R. DITTRICH, P. ORLOWSKI, H. TISCHER, S. SÖDER, R. ERBER, I. HOFFMANN, M.W. BECKMANN, L. LOTZ (<i>Erlangen; Coburg, Germany</i>)	533
Drug Delivery Properties of Nanocomposite Particles for Inhalation: Comparison of Drug Concentrations in Lungs and Blood. I. TAKEUCHI, Y. KOSHI, K. MAKINO (<i>Chiba, Japan</i>)	543
18-kDa Translocator Protein Ligands Protect H9C2 Cardiomyocytes from Cigarette Smoke-induced Cell Death: <i>In Vitro</i> Study. R. NAGLER, N. ZEINEH, M. AZRAD, N. YASSIN, A. WEIZMAN, M. GAVISH (<i>Haifa; Petah Tikva; Tel Aviv, Israel</i>)	549
Implantation of an Injectable Bone Substitute Material Enables Integration Following the Principles of Guided Bone Regeneration. M. BARBECK, O. JUNG, R. SMEETS, M. GOSAU, R. SCHNETTLER, P. RIDER, A. HOUSHMAND, T. KORZINSKAS (<i>Hamburg; Berlin; Rostock, Germany</i>).....	557
Effect of Liposomal Curcumin on Acetaminophen Hepatotoxicity by Down-regulation of Oxidative Stress and Matrix Metalloproteinases. G. DOGARU, A.E. BULBOACA, D. GHEBAN, P.M. BOARESCU, V. RUS, D. FESTILA, A.-V. SITAR-TAUT, I. STANESCU (<i>Cluj-Napoca, Romania</i>).....	569
Successful Conversion Surgery Following Chylous Ascites After Nivolumab for Advanced Gastric Cancer. S. TOYOTA, H. ORITA, Y. FUKUYAMA, S. MOTOYOSHI, S. KAWANAMI, S. MAEDA, E. KURAMITSU, M. ICHIMANDA, S. NAGAMATSU, S. NAGATA, S. KAI, D. KORENAGA, M. MORI (<i>Nakatsu; Fukuoka, Japan</i>)	583
Butyric Acid in Saliva of Chronic Periodontitis Patients Induces Transcription of the EBV Lytic Switch Activator BZLF1: A Pilot Study. R. KOIKE, K. NODOMI, N. WATANABE, Y. OGATA, O. TAKEICHI, M. TAKEI, T. KANEKO, M. TONOGI, A. KOTANI, K. IMAI (<i>Tokyo; Chiba; Kanagawa, Japan</i>)	587
Effects of Cinnamaldehyde on the Viability and Expression of Chemokine Receptor Genes in Temozolomide-treated Glioma Cells. J.-C. CHEN, P.-S. HSIEH, S.-M. CHEN, J.-H. HWANG (<i>Chiayi; Haulien; Taichung, Taiwan, ROC</i>)	595
Regulation of NF- κ B Signalling Through the PR558-RelA Interaction in Osteoblasts. A. SUZUKI, G. SUGIYAMA, Y. OHYAMA, W. KUMAMARU, T. YAMADA, Y. MORI (<i>Fukuoka, Japan</i>)	601
Evaluation of Goose-beak Bone Particles for Dentoalveolar Reconstruction in Dogs. S.J. JANG, S.H. CHOI (<i>Cheongju, Republic of Korea</i>)	609
Effects of Coffee Intake on Oxidative Stress During Aging-related Alterations in Periodontal Tissue. T. KOBAYASHI, T. MARUYAMA, T. YONEDA, H. MIYAI, T. AZUMA, T. TOMOFUJI, D. EKUNI, M. MORITA (<i>Okayama; Mizuho, Japan</i>)	615
Xerostomia and Clinical Outcomes in Definitive Intensity Modulated Radiotherapy (IMRT) Versus Three-dimensional Conformal Radiotherapy (3D-CRT) for Head and Neck Squamous Cell Carcinoma: A Meta-analysis. F. DE FELICE, N. PRANNO, P. PAPI, O. BRUGNOLETTI, V. TOMBOLINI, A. POLIMENI (<i>Rome, Italy</i>)	623