

Immunohistochemical and Immunoelectron Study of Major Histocompatibility Complex Class-II Antigen in Canine Cutaneous Histiocytoma: Its Relation to Tumor Regression

ISABEL PIRES¹, PAULA RODRIGUES¹, ANABELA ALVES¹,
FELISBINA LUISA QUEIROGA¹, FILIPE SILVA¹ and CARLOS LOPES²

¹CECAV, Department of Veterinary Sciences, University of Trás-os-Montes and Alto Douro, Vila Real, Portugal;

²Department of Pathology and Molecular Immunology,

Abel Salazar Institute of Biomedical Sciences of the University of Porto, Porto, Portugal

Abstract. In order to investigate the immune mechanisms involved in regression of canine cutaneous histiocytoma (CCH), major histocompatibility complex (MHC) class-II immuno-expression and the number of T- and B-lymphocytes and macrophages were analyzed in 93 cases of CCH. MHC class-II was also studied in 16 cases of CCH by immunoelectron microscopy. All tumors expressed MHC class-II, and two major staining patterns were identified: focal juxtannuclear cytoplasmic staining and rim-like staining along the cell periphery. The MHC class-II labelling pattern and T- and B-lymphocyte infiltrates were associated with tumor regression. In regressing lesions, MHC class-II molecules shift to the cell surface and an increase of both T- and B-lymphocytes were noted. The increasing expression of MHC class-II molecules on the cell surface could be a significant factor for the onset and progression of tumour regression.

Canine cutaneous histiocytoma (CCH) is a benign neoplasm of Langerhans cells. The disease affects mainly young dogs and often regresses spontaneously (1-4). CCH has similarities to some forms of human Langerhans cell histiocytosis (LCH). Nevertheless, LCH has distinct clinical behaviours in dogs and humans. In contrast to dogs, only a limited number of lesions undergo regression in humans (5-7) and other lesions can disseminate and be potentially fatal (8-10). CCH could be regarded as a unique model to study

Correspondence to: Isabel Pires, Department of Veterinary Sciences, University of Trás-os-Montes and Alto Douro, 5000-911 Vila Real, Portugal. Tel: +351 962455968, Fax: +351 259350480, e-mail: ipires@utad.pt

Key Words: Canine cutaneous histiocytoma, regression, MHC-II, lymphocytes.

human LCH and to understand the immune mechanisms involved in tumour regression.

Complete or partial regression of various tumour types has been documented both in man (11-14) and animals (15-17). In CCH, regression has been associated with an initial infiltration of T-helper cells (CD4⁺), followed by increased expression of T-helper 1 (Th1) cytokines and recruitment of antitumour effector cells (18). However, the factors that determine the onset of regression in canine histiocytomas are still not well understood. The aim of the present study was to clarify a possible role of major histocompatibility complex class-II (MHC-II) in regression of CCH.

Materials and Methods

Tissue processing and tumour classification. Ninety-three cases of CCH and 10 normal canine skin samples, obtained from the University of Trás-os-Montes and Alto Douro Histopathology Laboratory archives in four years, were included in this study. Each sample was re-examined by two independent pathologists (IP and AA) in order to confirm the diagnosis, according to the criteria of the World Health Organization International Histological Classification of Tumors of Domestic Animals (19). Histiocytomas were also grouped according to the degree and patterns of intra-tumoural lymphocytic infiltrate into four groups, as described previously (20), representing various stages of tumour regression.

Immunohistochemistry. For immunohistochemical studies, 3- μ m sections of all samples were cut and mounted on silane-coated slides. The antibodies used were: mouse anti-human Human Leukocyte Antigen DR (HLA-DR, α -chain) (MHC-II, D33, 1:50; Dako®, Carpinteria, California, USA), rabbit anti-human CD3 (1:100; Dako®, Carpinteria, California, USA), mouse anti-human CD79a (HM57, 1:50; Dako®, Carpinteria, California, USA) and mouse anti-human leucocyte protein L1 (calprotectin) (MAC387, 1:100; AbDSerotec®, Oxford, UK). The detection of the antigens was carried out by the streptavidin-biotin-peroxidase complex method, with a commercial detection system (Ultra Vision Detection System, Lab Vision Corporation, Fremont, California, USA), following the manufacturer's

instructions. Antigen retrieval was carried out by microwave treatment with sodium citrate buffer at pH 6, with microwave irradiation (750 W) for 3x5 min. Antigen retrieval was not used before staining for MHC-II. Immunoreaction was visualized by incubation with 13,3-diaminobenzidinetetrahydrochloride (DAB) at 0.05% with 0.01% H₂O₂ as the final substrate for 5 min. After a final washing in distilled water, the sections were counterstained with Mayer's haematoxylin, dehydrated, cleared and mounted. The primary antibody was replaced with phosphate buffered saline (PBS) for negative controls, and positive controls consisted of sections from normal canine skin, skin adjacent to neoplastic tissue and canine lymph nodes.

Quantification of immunolabelling. Positivity was indicated by the presence of distinct brown labelling. Immunoreactivity was evaluated blindly by two pathologists using a semi-quantitative method. For CD3⁺ and CD79⁺ lymphocytes and for MAC387⁺ macrophages, the percentage of cells exhibiting a positive immunohistological reaction was estimated according to the number of positive cells in relation to the total number of the cells present in the histiocytoma (-: 0%; +:1-10%; ++: 11-25; +++: 26-50%; ++++: >51%). MHC class-II antigen was evaluated in the tumour cells as -: 0%; +:1-10%; ++: 11-25; +++: 26-50%; ++++: >51% of positive tumoural cells. The labelling pattern for MHC-II antigen was also evaluated according to the site of the positive reaction as membranous (more than 50% of cells with membranous reaction) or cytoplasmic (more than 50% of cells with cytoplasmic reaction).

MHC class-II immunoelectron study. The MHC-II immunoelectron study was performed on 16 samples fixed in formalin (four tumours of each histological group), using the pre-embedding method, following the standard technique used at the Institute of Histology and Embryology of the Medicine Faculty, Coimbra, Portugal. The immunocytochemical labelling was performed on thick sections (50 µm), prior to embedding in plastic resin. The reagents were similar to those used in the process of immunohistochemistry for observation by light microscopy. After staining with uranyl acetate, dehydrating and embedding, thin sections were observed in a transmission electron microscope (100S, Jeol®, Tokyo, Japan) at 40-60 kV.

Statistical analysis. Associations between histological groups and positivity for CD3, CD79, MAC387 and MHC-II immunoreaction were performed using the χ^2 test, with the SPSS system version 12.0 (SPSS Inc., Chicago, Illinois, USA). A value of $p < 0.05$ was considered significant.

Results

Tumour classification. According to the number and distribution of lymphoid infiltrates (20), 15 cases were classified as group I, 15 cases as group II, 42 as group III and 21 as group IV.

Immunohistochemistry. CD3⁺ cells were present in all tumours (93/93) while CD79⁺ lymphocytes were absent from 26 cases. In all lesions, we observed more CD3⁺ T-lymphocytes than B-cells. In groups I and II, both B- and T-lymphocytes, when present, were identified at the bottom of the tumours. In group III and IV, they were found diffusely between neoplastic cells, being the major cell population in

Table I. Immunoreaction of CD3⁺ T-lymphocytes (CD3), CD79⁺ B-lymphocytes (CD79), MAC387⁺ macrophages (MAC387) and major histocompatibility complex class-II (MHC-II) in canine cutaneous histiocytoma according to histological groups.

	Histological group				p-Value
	1	2	3	4	
	n (%)	n (%)	n (%)	n (%)	
CD3					<0.001
-	0 (0.0)	0 (0.0)	0 (0.0)	0 (0.0)	
+	15 (100)	0 (0.0)	0 (0.0)	0 (0.0)	
++	0 (0.0)	15 (0.0)	5 (11.9)	0 (0.0)	
++++	0 (0.0)	0 (0.0)	37 (88.1)	21 (100)	
CD79					<0.001
-	13 (86.7)	4 (26.7)	5 (11.9)	4 (19)	
+	1 (6.7)	1 (6.7)	2 (4.8)	5 (23.8)	
++	1 (6.7)	10 (66.7)	35 (83.3)	12 (57.1)	
++++	0 (0.0)	0 (0.0)	0 (0.0)	0 (0.0)	
MAC387					0.248
-	1 (6.7)	1 (6.7)	1 (2.4)	0 (0)	
+	12 (80.0)	11 (73.3)	25 (59.5)	13 (61.9)	
++	1 (13.3)	2 (13.3)	16 (38.1)	7 (33.3)	
+++	0 (0)	1 (6.7)	0 (0)	1 (1.1)	
++++	0 (0)	0 (0)	0 (0)	0 (0)	
MHC-II					<0.001
Cytoplasmic	14 (93.3)	7 (46.7)	1 (2.4)	0 (0.0)	
Membranous	1 (6.7)	8 (53.3)	41 (97.6)	21 (29.6)	

group IV histiocytomas. Statistical analysis revealed a significant increase of CD3⁺ T- and CD79⁺ B-lymphocytes from group I to groups II, III and IV ($p < 0.001$; Table I).

A positive reaction for MAC387 was shown in intravascular monocytes and neutrophils present in ulcerated areas and in keratinocytes from the *granulosum* and *corneum stratus* of epidermis and follicle. A variable number of MAC387⁺ macrophages were observed between neoplastic cells and lymphocytes, but no association with histological groups was seen (Table I).

The MHC-II antigen was expressed in different cells in CCH. In lymphocytes, the labelling was represented by a small rim in the cell periphery. Exudate macrophages and monocytes exhibited diffuse cytoplasmic staining. Epidermal Langerhans cells exhibited a cytoplasmic-positive reaction in cell processes.

In tumoural cells of CCH, MHC-II was present diffusely in all lesions (++++). Two major patterns of immunolabelling were observed: a cytoplasmic (diffuse or focal juxtannuclear) and a membranous reaction. In 22 tumours (23.7%) the labelling was predominantly cytoplasmic, and in 71 (76.3%) the positivity was predominantly membranous.

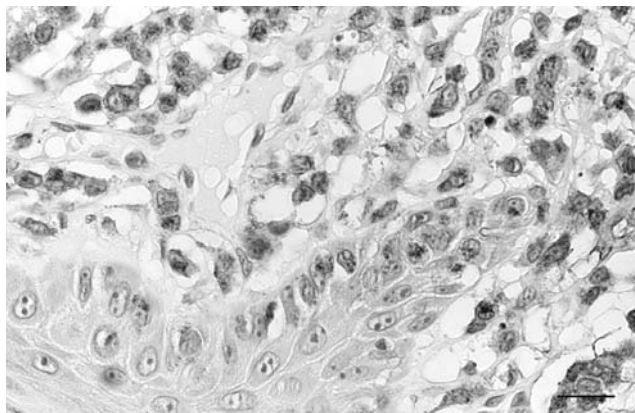


Figure 1. Group I canine cutaneous histiocytoma. Focal juxtannuclear cytoplasmic staining for major histocompatibility complex class-II. Bar=20 μ m.

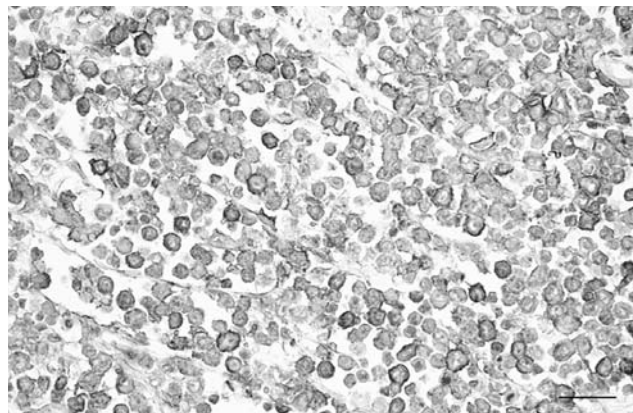


Figure 2. Group III canine cutaneous histiocytoma. Membranous staining for major histocompatibility complex class II antigen in neoplastic cells. Bar=30 μ m.

The labelling pattern varied significantly among the different histological groups ($p < 0.001$; Table I). In group I tumours, most of the tumoural cells displayed a cytoplasmic reaction (Figure 1), except for a small number of cells localised in the tumour periphery, close to the lymphocytic infiltration. In group II, we observed both patterns, with 8 out of 15 tumours having a predominantly membranous reaction. Generally, in tumoural cells of the epidermal surface and in the center of the lesions, the immunoreaction was predominately cytoplasmic, diffuse or with a juxtannuclear pattern, and in the cells at the tumour base the immunolabelling was membranous. In tumours of group III, the labelling pattern was predominately membranous (Figure 2), except for a small number of cells near the epidermal surface. In group IV, the labelling was exclusively membranous in all cases.

Similarly to the associations observed in the histological groups the pattern of MHC-II reaction in CCH tumoural cells were statistically associated with the presence of both CD3⁺ T-lymphocytes and CD79⁺ B-lymphocytes ($p < 0.001$), but not with MAC387⁺ macrophages ($p = 0.085$).

Immunoelectron microscopic study. Immunoelectron microscopic studies, using the pre-embedding method, did not allow for a perfect preservation of cells and tissues. However, in all samples, the results were complementary to those obtained by light microscopy. A cytoplasmic pattern reaction, diffuse or perinuclear (Figure 3), was predominant in tumours with a low lymphoid infiltrate (group I and II) and MHC-II antigens were membrane bound, associated with endoplasmic reticulum and Golgi complex, and in vesicles, some of which had a multivesicular appearance (Figure 4). MHC-II antigens were also present along the cell surface of

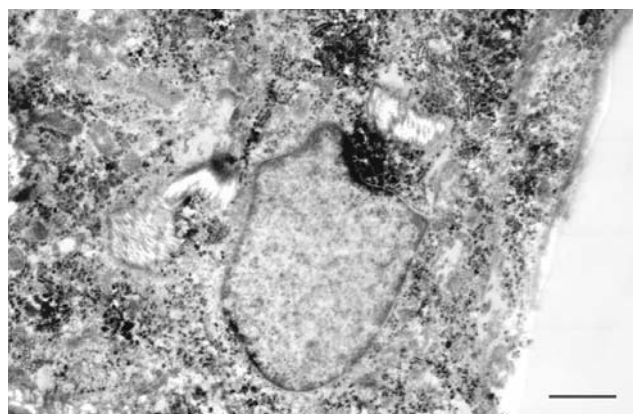


Figure 3. Group II canine cutaneous histiocytoma. Immunoelectron micrographs showing peri-nuclear cytoplasmic immunoreactivity major histocompatibility complex class-II-related antigen. Bar=2 μ m.

the tumoural cells, in the tumoural cell membrane (Figure 5), more commonly in group III and IV tumours.

Discussion

MHC-II antigens were detected in all CCH studied here, as described in previous work (21, 22). However, as far as we know, this is the first study that includes all histological groups and an immunoelectron study. The previous study that reported a relationship between the immunoeexpression of MHC-II antigen and CCH regression (22) did not include group III and IV tumours, which limits the conclusions that can be done. As described by Kippar *et al.* (22), we observed two major patterns of labelling: intracytoplasmic and

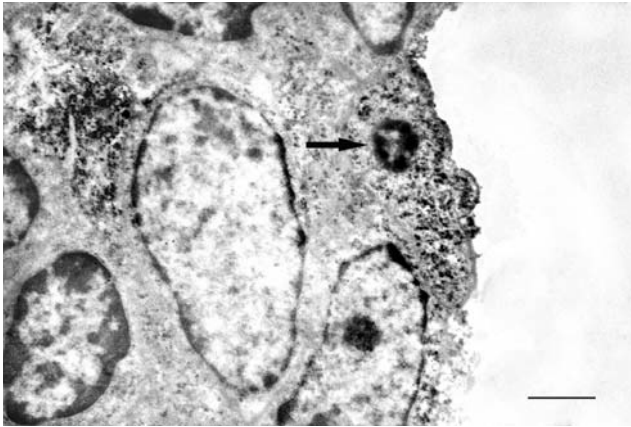


Figure 4. Group II canine cutaneous histiocytoma. Immunoelectron micrographs showing cytoplasmic immunoreactivity for major histocompatibility complex class-II-related antigen both in the perinuclear region and periphery of tumoral cells. Note a positive reaction on a multivesicular body (arrow). Bar=2 μ m.

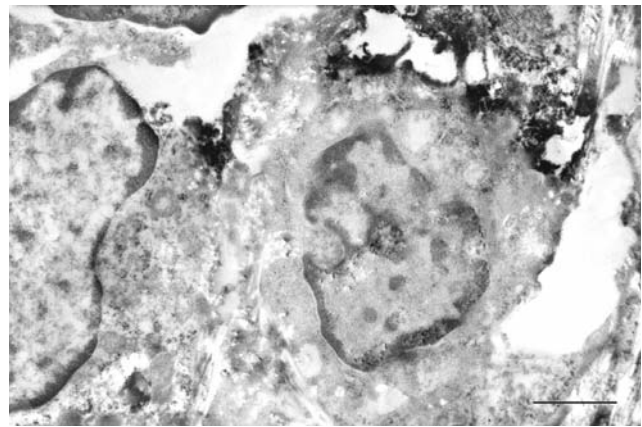


Figure 5. Group III canine cutaneous histiocytoma. Immunoelectron micrographs showing membranous labelling for major histocompatibility complex class-II-related antigen. Bar=2 μ m.

peripheral in the cell membrane. By immunoelectron methods, we distinguished a positive reaction for MHC-II in the cytoplasm (sometimes diffuse, but most often membrane-bound, located in the perinuclear area) and in the cytoplasmic membrane of tumoural cells. These findings seem to reflect different stages of the mechanism of biosynthesis and organization of the MHC molecules during the immune response mediated by Langerhans cells and dendritic cells. In immature dendritic cells, most MHC-II molecules are localized intracellularly in MHC-II compartments in storage vesicles, endosomes and lysosomes, the MHC-II-enriched compartments (23). These compartments, also identified in Langerhans cells (24, 25), have variable morphology: a multivesicular appearance or an intermediate form with internal vesicles and concentric membrane arrays (26, 27). In mature dendritic cells, the compartments of MHC-II are rearranged and the MHC-II molecules are efficiently transported to the cytoplasmic membrane (24, 28). In fact, histiocytoma cells in CCH seem to mimic normal dendritic cells in that the capacity to stimulate T-lymphocytes is related to their ability to regulate the distribution of MHC-II molecules intracellularly (29). Moreover, the MHC-II molecules in the juxtannuclear area of CCH tumoural cells may represent storage granules containing newly-synthesized MHC-II molecules which have not yet been fused with endosomes (22, 23). The presence of MHC-II molecules in the cell membrane, also described in human Langerhans cell histiocytosis studies (30), could represent a T-cell-activating 'mature' functional state of CCH, a significant factor for the onset and progression of tumour regression (22). In tumours of groups III and IV, the cytoplasmic reaction was reduced, possibly because after maturation, the synthesis of MHC-II molecules decreases (27).

In the present study, the regression of CCH appears to be associated not only with the shift of MHC-II molecules in tumoural cells, but also with the infiltration of T-lymphocytes, as previously described (18). Optimal T-cell activation requires two distinct signals. The first signal is mediated by MHC-restricted, antigen-specific triggering of the T-cell receptor complex and the second by an antigen-independent mechanism, termed co-stimulation. On dendritic cells, MHC-II molecules present peptides to immunologically-naïve CD4⁺ T-cells, which become activated only when their antigen-specific T-cell receptors interact with cognate MHC-II peptide complexes on mature dendritic cells (31). The second signal is provided through surface receptors, such as CD28. CD28 ligands of the B7 family are expressed constitutively by professional antigen-presenting cells, including dendritic cells, monocytes and activated B-cells (32, 33).

Other molecules may be involved in CCH regression. A decrease in or lack of E-cadherin expression in regressing CCH has been reported in previous work (34, 35), suggesting a maturation of the tumoural cells.

Beyond the activation of tumour-specific lymphocytes, CD4⁺ T-cells possess further antitumour functions in the recruitment of non-specific effector cells such as macrophages, which can exert additional tumouricidal activity by synthesis of reactive metabolites (18). However, our study does not support this hypothesis. The intervention of dermal dendritic cells in regression is also suggested in histiocytoma (22).

This study also suggests a role for B-lymphocytes in CCH regression. This may be the result of complex cross-talk mechanisms between dendritic cells and lymphocytes (36-38),

and probably, as in the immune response, involves multiple integrated signalling pathways by different molecules. Full understanding of these processes can only be achieved by performing more dynamic analyses of local immunity.

In conclusion, this study strongly suggests that tumoural cells in CCH appear in an immature state in early lesions and undergo a maturation process characterized by an increased expression of MHC molecules in the cell periphery. In regressing lesions, these cells may differentiate towards a mature phenotype and might themselves interact with lymphocytes. The shift of MHC molecules in the cell periphery seems to be a significant factor for the initiation and progression of CCH regression.

Acknowledgements

The work was supported by the strategic research project Pest-OE/AGR/UI0772/2011 financed by the Foundation for Science and Technology of Portugal.

References

- Coomer AR and Liptak JM: Canine histiocytic diseases. *Compend Contin Educ Vet* 30: 202-204, 208-216; quiz 216-217, 2008.
- Fulmer AK and Mauldin GE: Canine histiocytic neoplasia: An overview. *Can Vet J* 48: 1041-1043, 1046-1050, 2007.
- Kelly DF: Canine cutaneous histiocytoma. A light and electron microscopic study. *Pathol Vet* 7: 12-27, 1970.
- Dobson JM, Samuel S, Milstein H, Rogers K and Wood JL: Canine neoplasia in the UK: Estimates of incidence rates from a population of insured dogs. *J Small Anim Pract* 43: 240-246, 2002.
- McElligott J, McMichael A, Sanguenza OP, Anthony E, Rose D and McLean TW: Spontaneous regression of Langerhans' cell histiocytosis in a neonate with multiple bony lesions. *J Pediatr Hematol Oncol* 30: 85-86, 2008.
- Yamaguchi S, Oki S and Kurisu K: Spontaneous regression of Langerhans' cell histiocytosis: A case report. *Surg Neurol* 62: 136-140; discussion 140-131, 2004.
- Jang KA, Ahn SJ, Choi JH, Sung KJ, Moon KC and Koh JK: Histiocytic disorders with spontaneous regression in infancy. *Pediatr Dermatol* 17: 364-368, 2000.
- Bansal D, Marwaha RK, Trehan A, Gupta V and Varma N: Langerhans' cell histiocytosis: Experience from a single center. *Indian Pediatr* 45: 685-688, 2008.
- Goyal R, Das A, Nijhawan R, Bansal D and Marwaha RK: Langerhans' cell histiocytosis infiltration into pancreas and kidney. *Pediatr Blood Cancer* 49: 748-750, 2007.
- Terracciano L, Kocher T, Cathomas G, Bubendorf L and Lehmann FS: Langerhans' cell histiocytosis of the stomach with atypical morphological features. *Pathol Int* 49: 553-556, 1999.
- Aiba S, Rokugo M and Tagami H: Immunohistologic analysis of the phenomenon of spontaneous regression of numerous flat warts. *Cancer* 58: 1246-1251, 1986.
- Arakawa Y, Mori H, Ikegami T, Hanaoka J, Kanamoto M, Kanemura H, Morine Y, Imura S and Shimada M: Hepatocellular carcinoma with spontaneous regression: Report of a rare case. *Hepatogastroenterology* 55: 1770-1772, 2008.
- Yutaka Y, Omasa M, Shikuma K, Okuda M and Taki T: Spontaneous regression of an invasive thymoma. *Gen Thorac Cardiovasc Surg* 57: 272-274, 2009.
- Karkos PD, Sastry A, Hampal S and Al-Jafari M: Spontaneous regression of Merkel cell carcinoma of the nose. *Head Neck* 32: 411-4, 2010.
- Mehl ML, Withrow SJ, Seguin B, Powers BE, Dernel WS, Pardo AD, Rosenthal RC, Dolginow SZ and Park RD: Spontaneous regression of osteosarcoma in four dogs. *J Am Vet Med Assoc* 219: 614-617, 2001.
- Selvakumar R, Ahmed R and Wettstein FO: Tumor regression is associated with a specific immune response to the E2 protein of cottontail rabbit papillomavirus. *Virology* 208: 298-302, 1995.
- Nicholls PK, Moore PF, Anderson DM, Moore RA, Parry NR, Gough GW and Stanley MA: Regression of canine oral papillomas is associated with infiltration of CD4+ and CD8+ lymphocytes. *Virology* 283: 31-39, 2001.
- Kaim U, Moritz A, Failing K and Baumgartner W: The regression of a canine Langerhans' cell tumour is associated with increased expression of IL-2, TNF-alpha, IFN-gamma and iNOS mRNA. *Immunology* 118: 472-482, 2006.
- Hendrick M, Mahaffey E, Moore F, Vos J and Walder E: *Histological Classification of Mesenchymal Tumors of Skin and Soft Tissues of Domestic Animals*. Washington: Armed Forces Institute of Pathology American Registry of Pathology, 1998.
- Cockerell GL and Slauson DO: Patterns of lymphoid infiltrate in the canine cutaneous histiocytoma. *J Comp Pathol* 89: 193-203, 1979.
- Moore PF, Schrenzel MD, Affolter VK, Olivry T and Naydan D: Canine cutaneous histiocytoma is an epidermotropic Langerhans' cell histiocytosis that expresses CD1 and specific beta 2-integrin molecules. *Am J Pathol* 148: 1699-1708, 1996.
- Kipar A, Baumgartner W, Kremmer E, Frese K and Weiss E: Expression of major histocompatibility complex class II antigen in neoplastic cells of canine cutaneous histiocytoma. *Vet Immunol Immunopathol* 62: 1-13, 1998.
- Arkema JM, Schadee-Eestermans IL, Broekhuis-Fluitsma DM and Hoefsmit EC: Localization of class II molecules in storage vesicles, endosomes and lysosomes in human dendritic cells. *Immunobiology* 183: 396-407, 1991.
- Kleijmeer MJ, Oorschot VM and Geuze HJ: Human resident Langerhans' cells display a lysosomal compartment enriched in MHC class II. *J Invest Dermatol* 103: 516-523, 1994.
- Mommaas AM, Mulder AA, Out CJ, Girolomoni G, Koerten HK, Vermeer BJ and Koning F: Distribution of HLA class II molecules in epidermal Langerhans' cells in situ. *Eur J Immunol* 25: 520-525, 1995.
- Murk JL, Lebbink MN, Humbel BM, Geerts WJ, Griffith JM, Langenberg DM, Verreck FA, Verkleij AJ, Koster AJ, Geuze HJ and Kleijmeer MJ: 3-D Structure of multilaminar lysosomes in antigen-presenting cells reveals trapping of MHC-II on the internal membranes. *Traffic* 5: 936-945, 2004.
- Barois N, de Saint-Vis B, Lebecque S, Geuze HJ and Kleijmeer MJ: MHC class II compartments in human dendritic cells undergo profound structural changes upon activation. *Traffic* 3: 894-905, 2002.
- Baron C, Raposo G, Scholl SM, Bausinger H, Tenza D, Bohbot A, Pouillart P, Goud B, Hanau D and Salamero J: Modulation of MHC class II transport and lysosome distribution by macrophage-colony-stimulating factor in human dendritic cells derived from monocytes. *J Cell Sci* 114: 999-1010, 2001.

- 29 Engering A and Pieters J: Association of distinct tetraspanins with MHC class II molecules at different subcellular locations in human immature dendritic cells. *Int Immunol* 13: 127-134, 2001.
- 30 Murphy GF, Harrist TJ, Bhan AK and Mihm MC Jr.: Distribution of cell surface antigens in histiocytosis X cells. Quantitative immunoelectron microscopy using monoclonal antibodies. *Lab Invest* 48: 90-97, 1983.
- 31 van Niel G, Wubbolts R and Stoorvogel W: Endosomal sorting of MHC class II determines antigen presentation by dendritic cells. *Curr Opin Cell Biol* 20: 437-444, 2008.
- 32 Abken H, Hombach A, Heuser C, Kronfeld K and Seliger B: Tuning tumor-specific T-cell activation: A matter of co-stimulation? *Trends Immunol* 23: 240-245, 2002.
- 33 Wells AD, Walsh MC, Bluestone JA and Turka LA: Signaling through CD28 and CTLA-4 controls two distinct forms of T-cell anergy. *J Clin Invest* 108: 895-903, 2001.
- 34 Pires I, Alves A, Rodrigues P, Queiroga FL and Lopes CS: E-Cadherin expression in canine cutaneous histiocytoma. *Vet Rec* 163: 59-60; author reply 60, 2008.
- 35 Pires I, Queiroga FL, Alves A, Silva F and Lopes C: Decrease of E-Cadherin expression in canine cutaneous histiocytoma appears to be related to its spontaneous regression. *Anticancer Res* 29: 2713-2717, 2009.
- 36 Dubois B, Vanbervliet B, Fayette J, Massacrier C, Van Kooten C, Briere F, Banchereau J and Caux C: Dendritic cells enhance growth and differentiation of CD40-activated B-lymphocytes. *J Exp Med* 185: 941-951, 1997.
- 37 Bartholdy B and Matthias P: Transcriptional control of B-cell development and function. *Gene* 327: 1-23, 2004.
- 38 Ma DY and Clark EA: The role of CD40 and CD154/CD40L in dendritic cells. *Semin Immunol* 2009.

Received December 20, 2012

Revised January 28, 2013

Accepted January 30, 2013